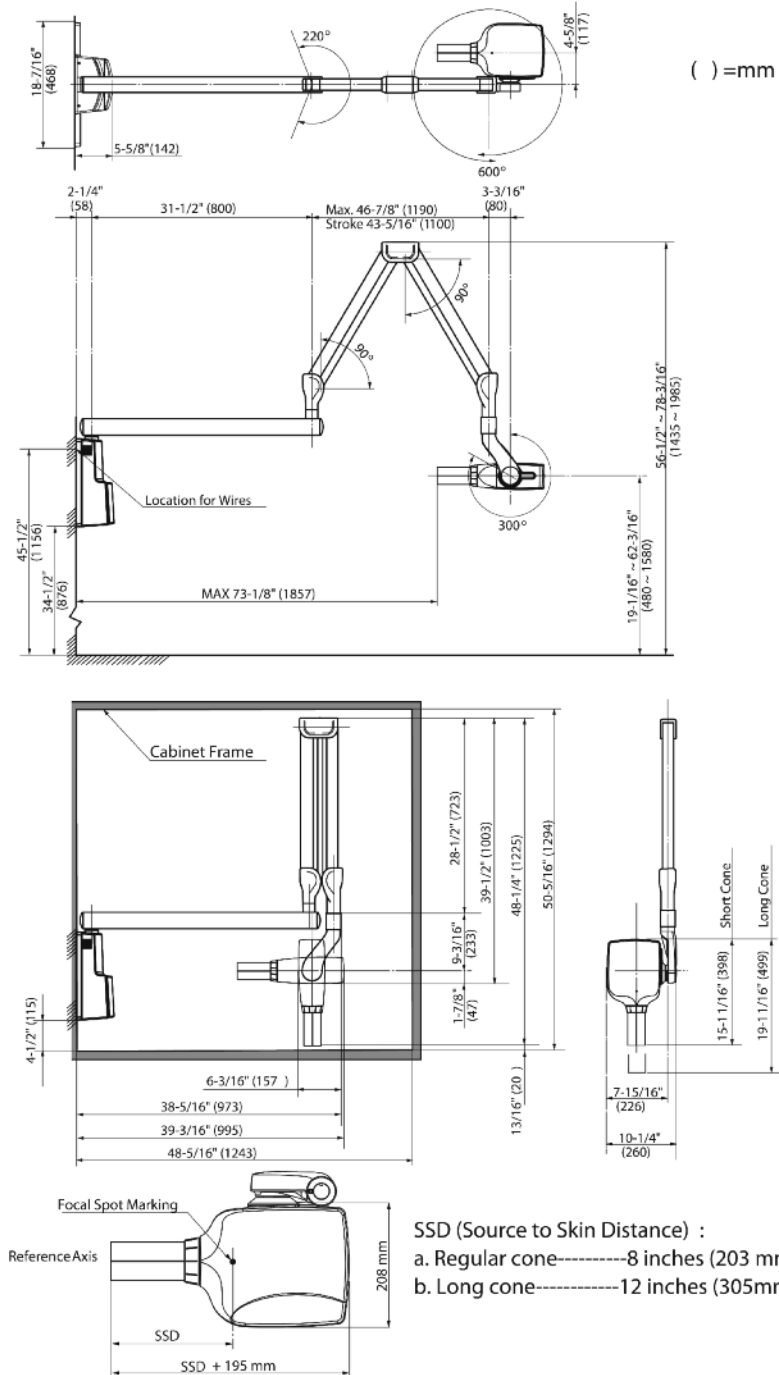


# BELRAY II

## Intra-oral X-ray



### Dimensions (Inches)



### Specifications

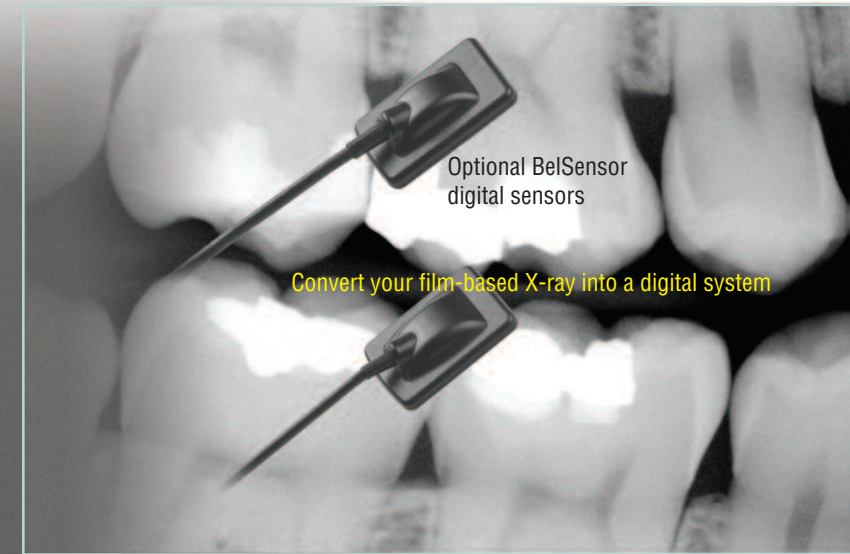
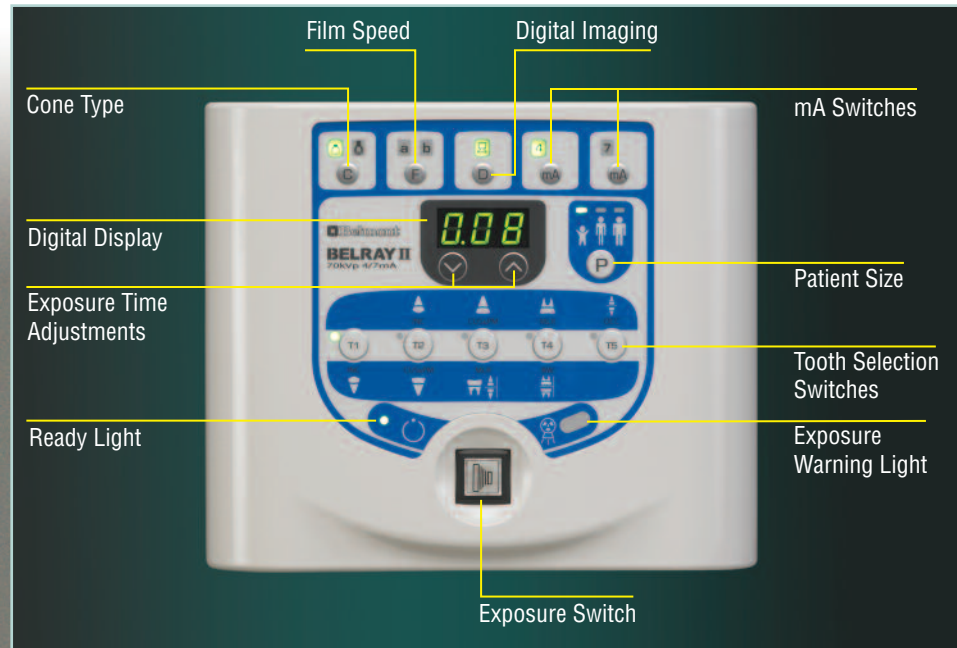
- 70 kVp
- 0.7mm Focal Spot
- Voltage: 120 VAC
- Rated Line Current: 6.5A at 70kVp, 7mA
- Exposure Time: 0.02-3.2 seconds
- Minimum Filtration in useful beam:  
2.2mm Al equivalent at 70kVp
- 4mA/7mA -Selectable
- Source to Skin Distance (SSD):  
Standard Cone: 204mm  
Optional Long Cone: 305mm
- Maximum Reach:  
with standard 31.5" Arm: 73-1/8"  
with optional 20" Arm: 61-5/8"  
with optional 12" Arm: 53-5/8"
- Additional Options:  
Plate for 4x4 stud mounting  
Coiled wire remote switch  
Long cone  
BelSensor digital sensors
- 2 Year Limited Warranty



**BELRAY II**  
Intra-oral X-ray



Belmont Equipment  
Division of Takara Belmont USA Inc.  
101 Belmont Drive, Somerset, NJ 08873  
Phone: 1-800-223-1192  
www.belmontequip.com



Control module

31.5" Arm standard.  
12" and 20" arms also available



Control module can be installed on central power console or mounted on a wall



### Standard Features:

- Crisp digital or film radiographic imaging
- Easy to use, intuitive controls
- Digital-ready switch
- Compact control module
- Control module can be mounted on central power console or on a wall
- 70 kVp tube potential
- Selectable tube current: 4mA, 7mA
- Small 0.7mm focal spot for detailed images
- Wall mount, cabinet mount or optional pass-thru mount