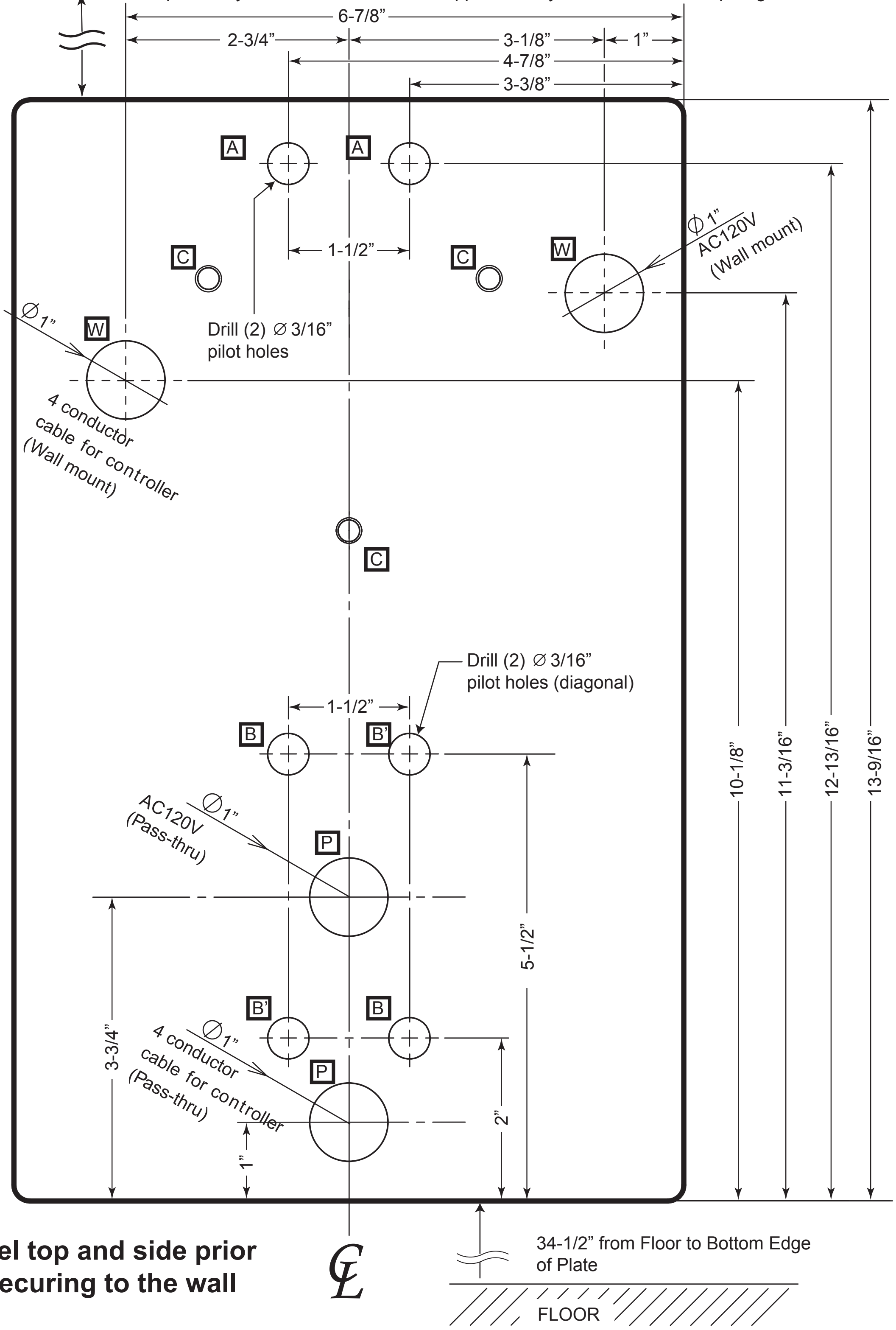
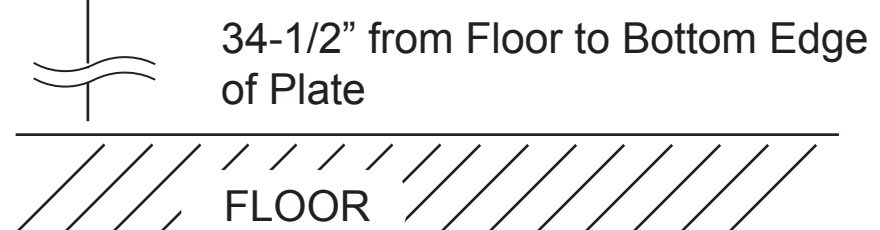


Top of X-ray Horizontal Arm Extends Approximately 1-3/4" Above the Top Edge of the Wall Plate

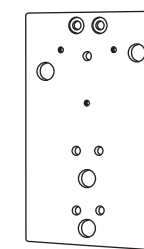


Level top and side prior to securing to the wall

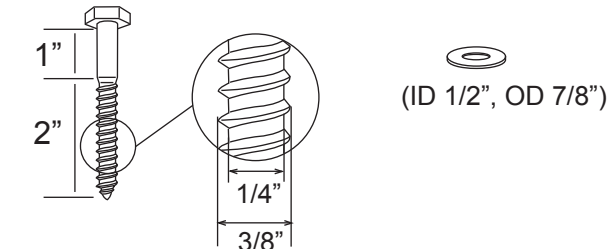


1. Optional 097PTP Plate & Mounting Hardware:

(1) 097PTP plate for mounting 097 X-ray for pass-thru and double 2x4 stud mounting.



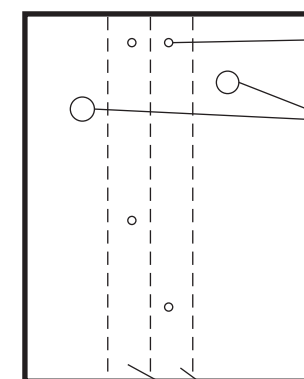
(4) Lag bolts
(4) Flat washers



2. Pre-Installation Preparation:

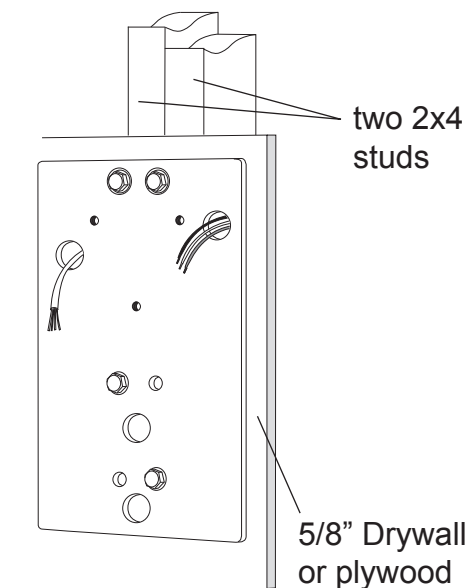
Drill (4) 3/16" Dia. pilot holes for lag bolts and (2) 1" Dia. thru holes for cables at locations as shown on the template.

Wall Mount

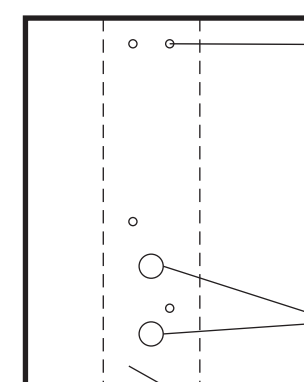


(4) 3/16" pilot holes for lag bolts
Holes for cables thru wall surface

two of 2x4 stud joined together left to right

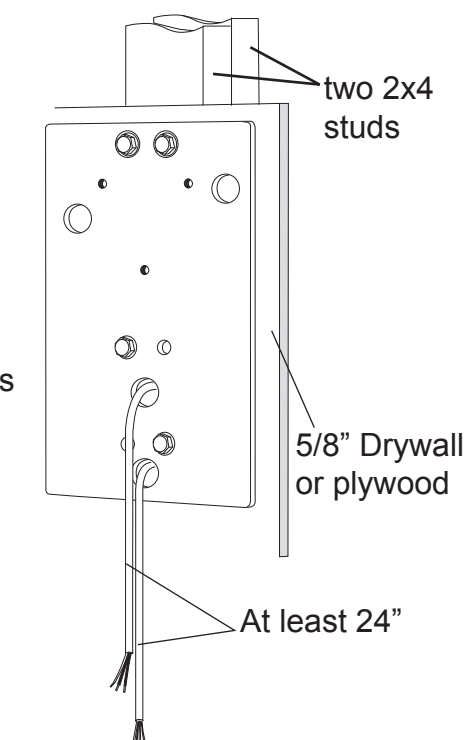


Pass-thru Mount



(4) 3/16" pilot holes for lag bolts
Holes for cables thru wall surface and 2x4 studs

two of 2x4 studs joined together front to back



3. Mounting Instructions

(1) Attaching the 097PTP plate onto wood studs (two vertical 2 x 4 studs firmly joined together, as shown above).

- Attach the plate with lag screws & washers supplied. Level top and side of plate prior to tightening lag screws.

- Use two of the holes on top. See holes marked **A** on the drawing.

- Select best two diagonal hole locations from four available locations on the bottom. See holes marked **B** or **B'** on the drawing.

For all types of wall construction, mounting hardware must withstand a 100 lb. (45 kg) sheer load and a 450 lb. (203 kg) withdrawal force at each of the four mounting bolts or lag screws.

(2) The 097PTP plate has three M8 threaded holes for attaching the arm bracket of Belray II (Model 097). M8 bolts are provided with the x-ray unit. See holes marked **C**.

(3) four possible 1" diameter hole locations are provided for wires to pass through.

For wall mount, use two holes marked **W**.

For Pass-thru mount, use two holes marked **P**.

Belray II Model 097

Double 2x4 mount and Pass-Thru Template and Preinstallation instructions



1-800-223-1192