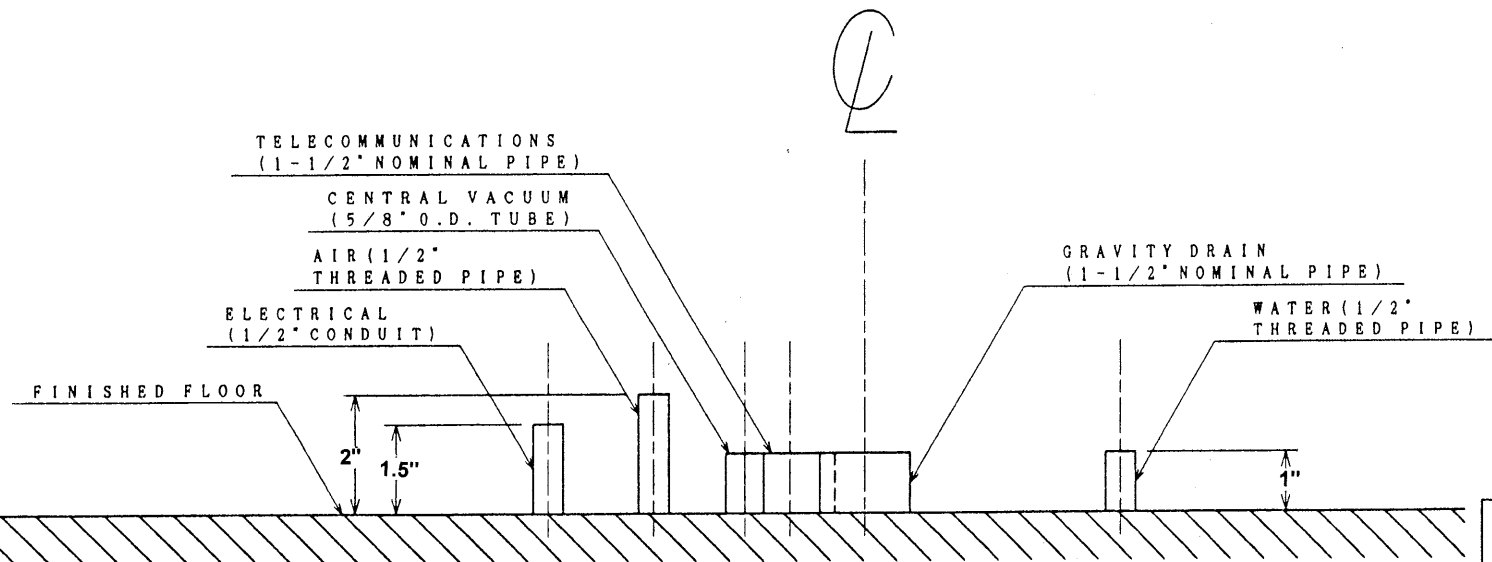
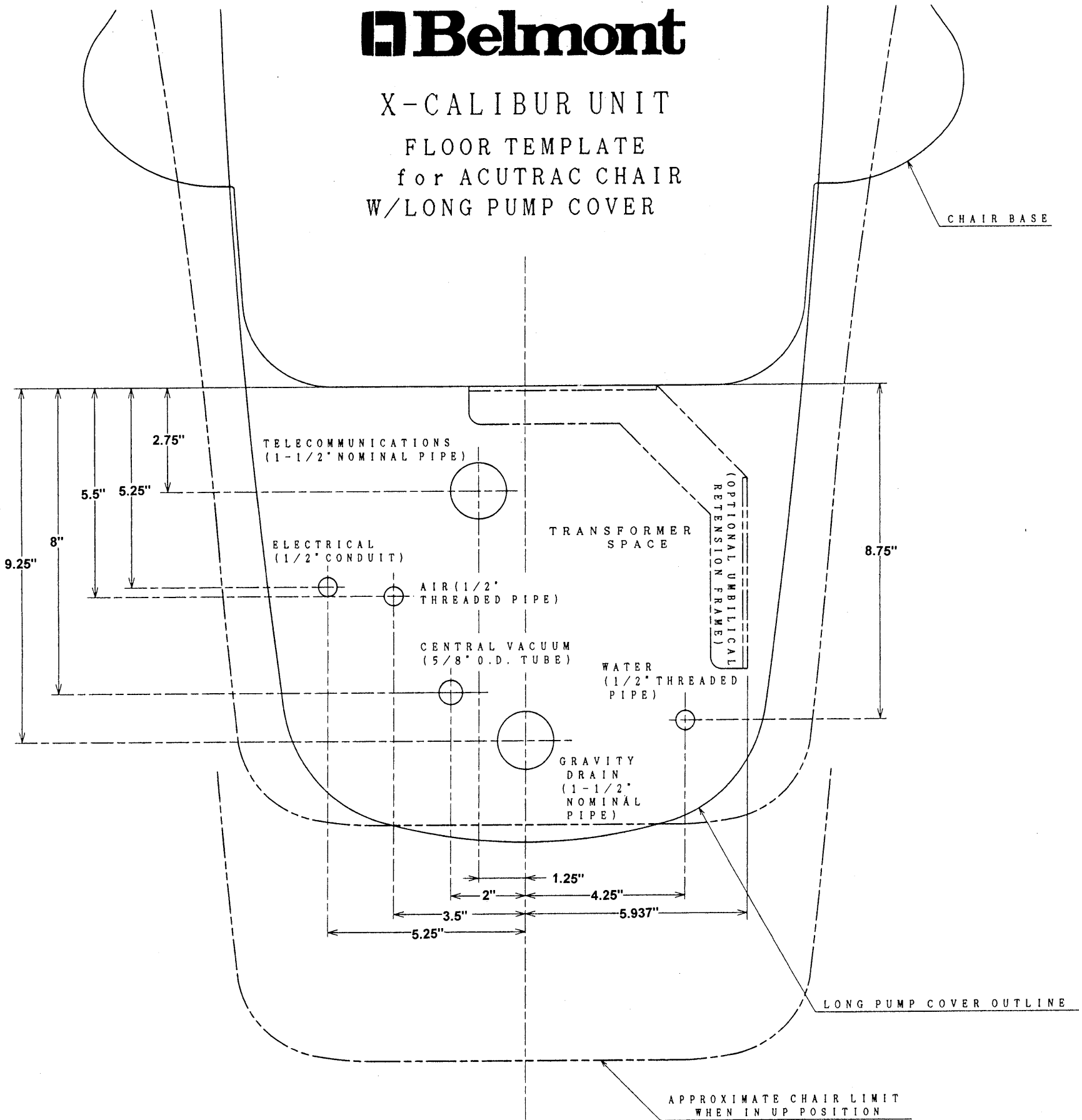


# Belmont

## X-CALIBUR UNIT FLOOR TEMPLATE for ACUTRAC CHAIR W/LONG PUMP COVER



- NOTES:**
- 1 LOCAL REGULATIONS PROVIDE THAT LICENSED PLUMBERS+ELECTRICIANS SHALL INSTALL UTILITIES.
  - 2 MAKE SURE ALL PLUMBING CONFORMS TO PREVAILING LOCAL CODES.
  - 3 PLUMBING CENTRAL VACUUM TO THE UTILITY CENTER SHOULD BE SPECIFIED BY THE CENTRAL VACUUM SUPPLIER AND TERMINATED IN UTILITY CENTER WITH 5/8" O.D. TUBE PERPENDICULAR TO THE FLOOR, SIMILAR TO THE DRAIN CONNECTION.
  - 4 GRAVITY DRAIN HAS 1-1/2" NOMINAL PIPE PROTRUDING 1" FROM FINISHED FLOOR.
  - NOTE: CONTRACTOR TO SUPPLY AND PLACE TRAP IN LINE TO CONFORM WITH LOCAL CODES.
  - 5 AIR SUPPLY TUBING TO PROTRUDE 1-3/4" FROM FINISHED FLOOR.
  - 6 ELECTRICAL CONTRACTOR TO SUPPLY QUAD ELECTRICAL OUTLET BOX.
  - 7 OPTIONAL UMBILICAL RETENSION FRAME SUPPLIED WITH ORDERS THAT CALL FOR MOUNTING EXTERNAL UMBILICAL WITH ACUTRAC THAT HAS LONG PUMP COVER. CONTRACTOR TO SUPPLY FASTENERS AND UMBILICAL TIE-DOWN.

**Belmont**

X-CALIBUR UNIT

FLOOR TEMPLATE  
for ACUTRAC CHAIR  
W/LONG PUMP COVER