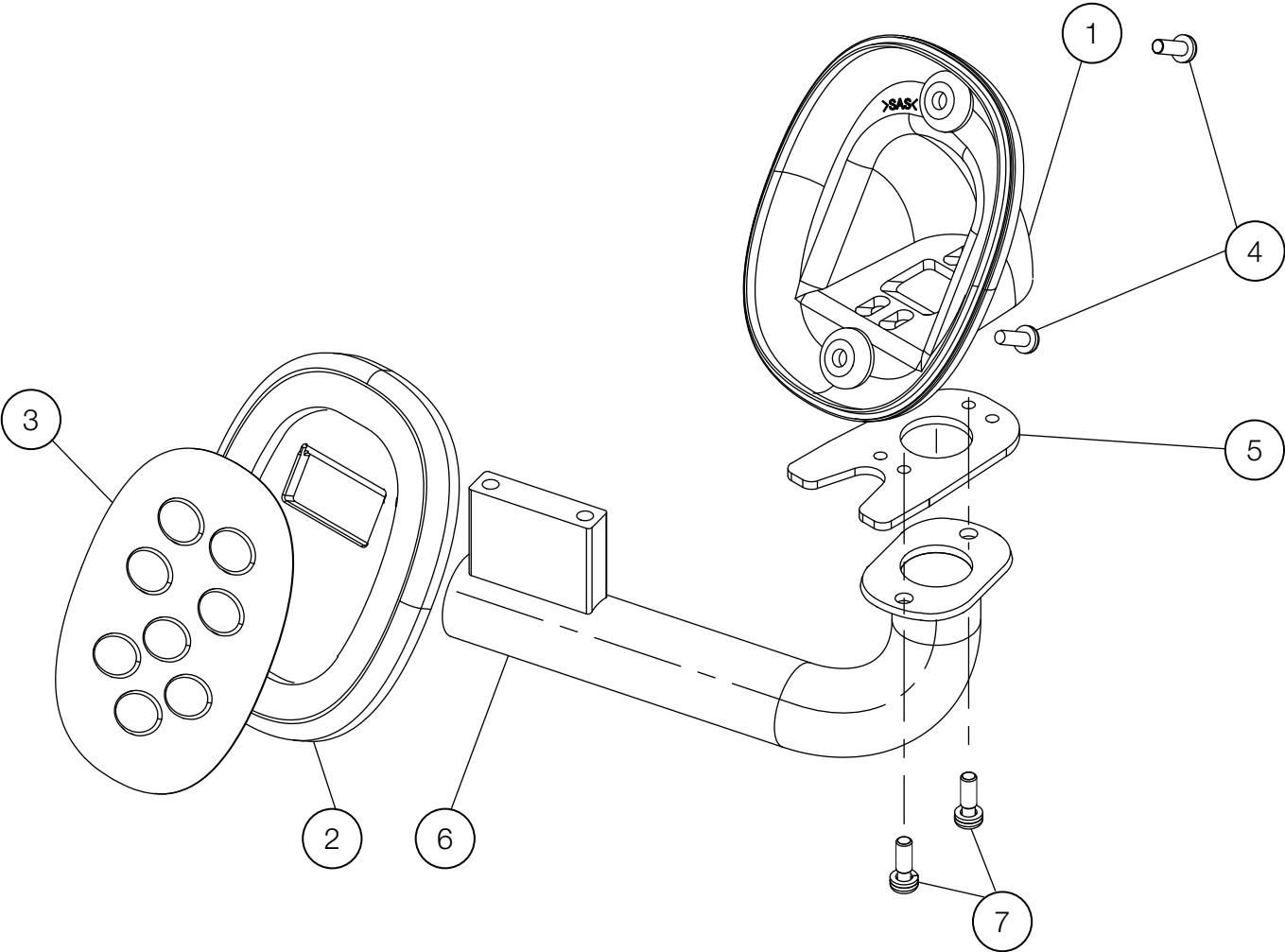
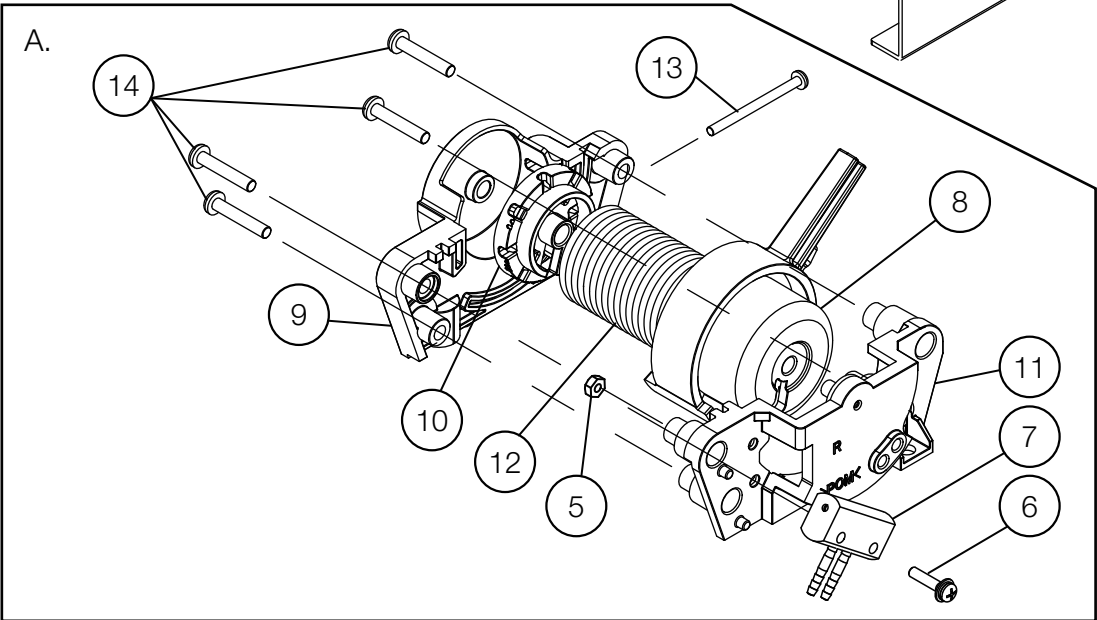
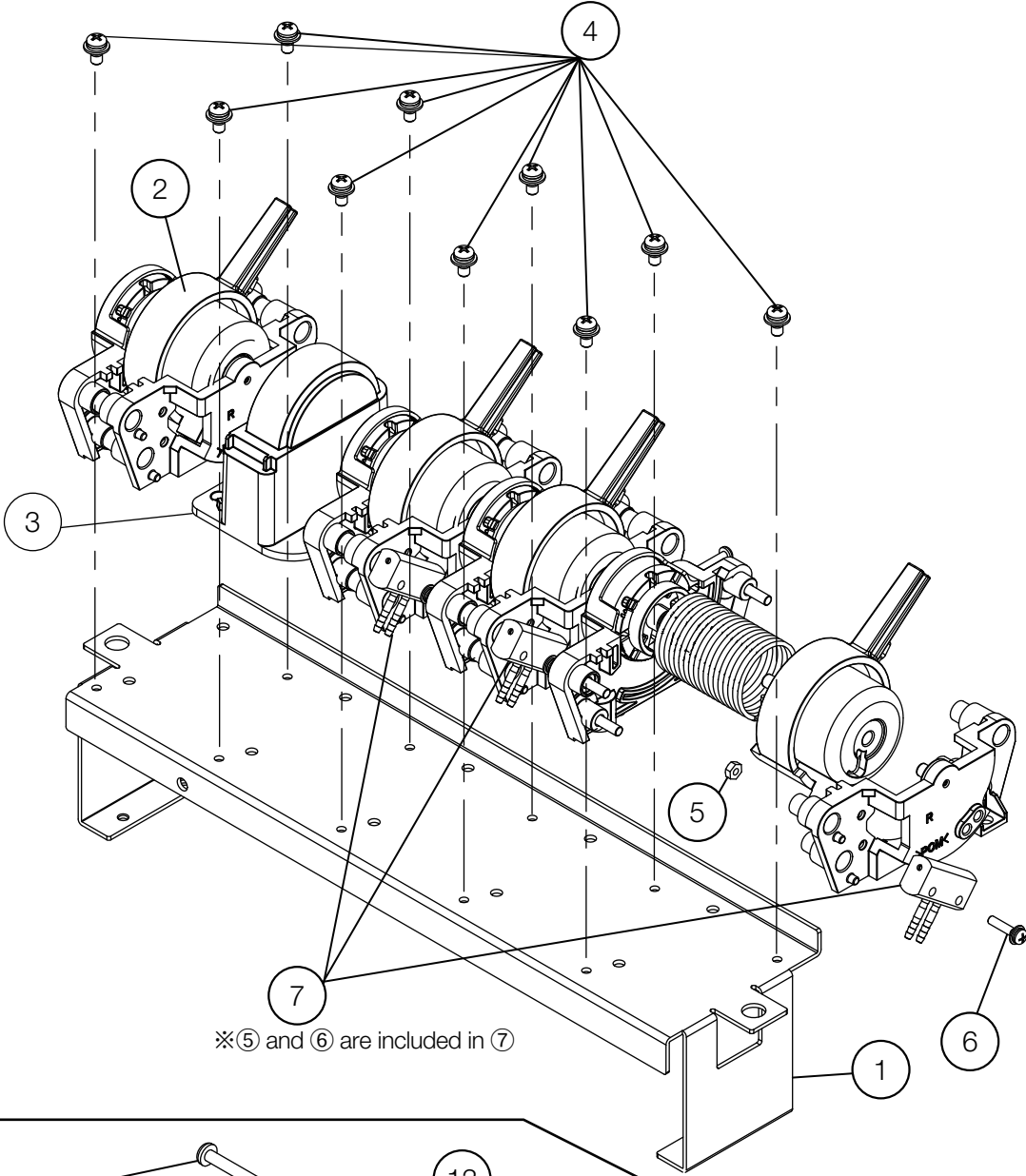


CONTROL PARTS



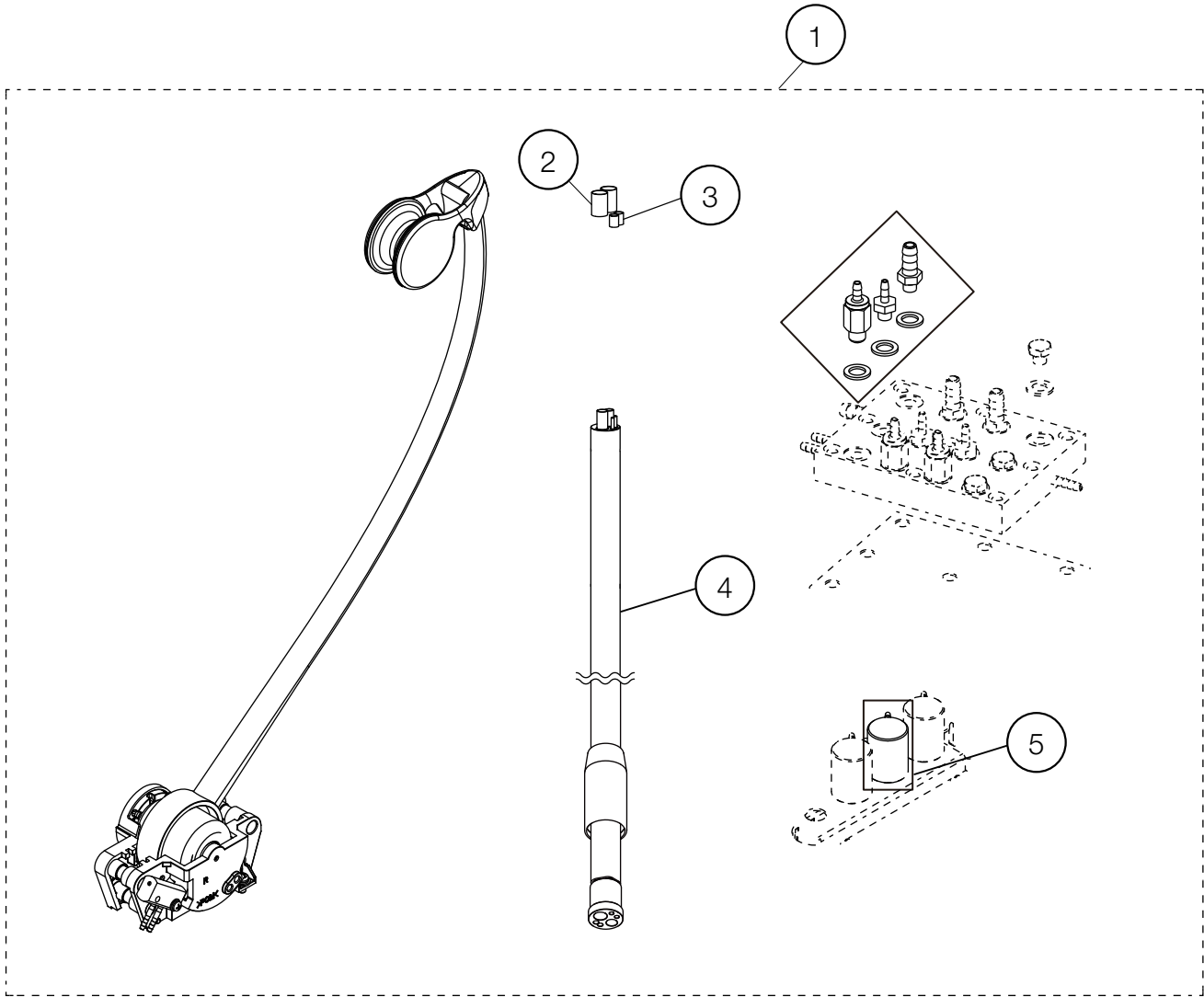
NO.	PARTS NO.	DESCRIPTION	QTY	APPLICABLE SERIAL NO.	NOTE
1	1A0MYWA0	ROD SW COVER	1		
2	AAFE98D0	TOUCH PAD	1		
3	AGFS16A0	TOUCH PAD SWITCH	1		
4	1A033FA0	PAN HEAD SCREW M4X10 CHROME N-80	2		
5	1A0MZHA0	BRACKET FOR CONTROL PAD	1		
6	1A0MZ7A0	CONTROL PAD ARM	1		
7	ZA887LSU	PAN HEAD SEMS SCREW 2P M4X12 SUS	2		

ROD COMPONENT



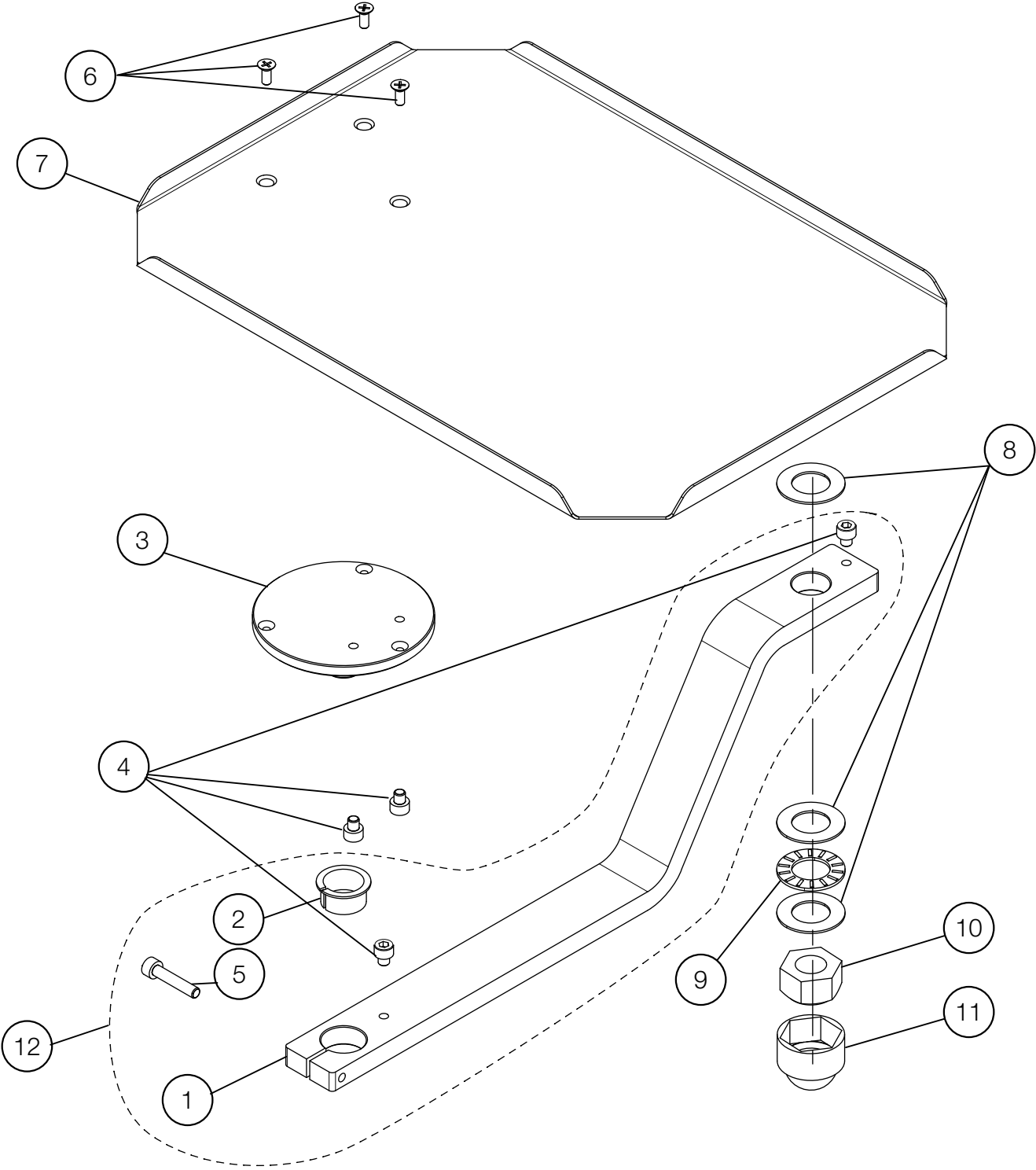
NO.	PARTS NO.	DESCRIPTION	QTY	APPLICABLE SERIAL NO.	LEAD TIME	NOTE
1	1A0TS3B0	BRACKET FOR ROD COMPONENT	1	AU20C0002	C	
2	1P05KEA0	ROD ROTATING PARTS ASSEMBLY	4		C	
3	1A0MYVA0	ROD BLANK COVER	1		C	
4	ZA88JLPU	PAN SEMS SCREW 3P M4X8 SUS	10		A	
5	ZA812JAU	NUT M3 SUS	3		A	
6	ZA88JJTY	PAN SEMS SCREW 3P M3X14 CHROME	3		A	
7	1P05KFA0	ROD PILOT VALVE(A)	3	VW18K0036	C	
8	1A0MZ4C0	ROD ROTATION AXIS	1		C	
9	1A0MYZA0	ROD AXIS BRACKET L	1		C	
10	1A0MZ1A0	ADJUST BLOCK	1		C	
11	1A0MZ0C0	ROD AXIS BRACKET R	1		C	
12	1A0MZ6A0	ROD SPRING	1		C	
13	ZA111J1U	PAN SCREW M3X35 SUS	1		A	
14	AFFX60A0	PAN SCREW P TYPE M4X20 CHROME	4		A	
A	1P07EKA0	ROD ROTATING PARTS ASSEMBLY WITH PILOT VALVE(A)	1		C	

ROD ADDITIONAL HP



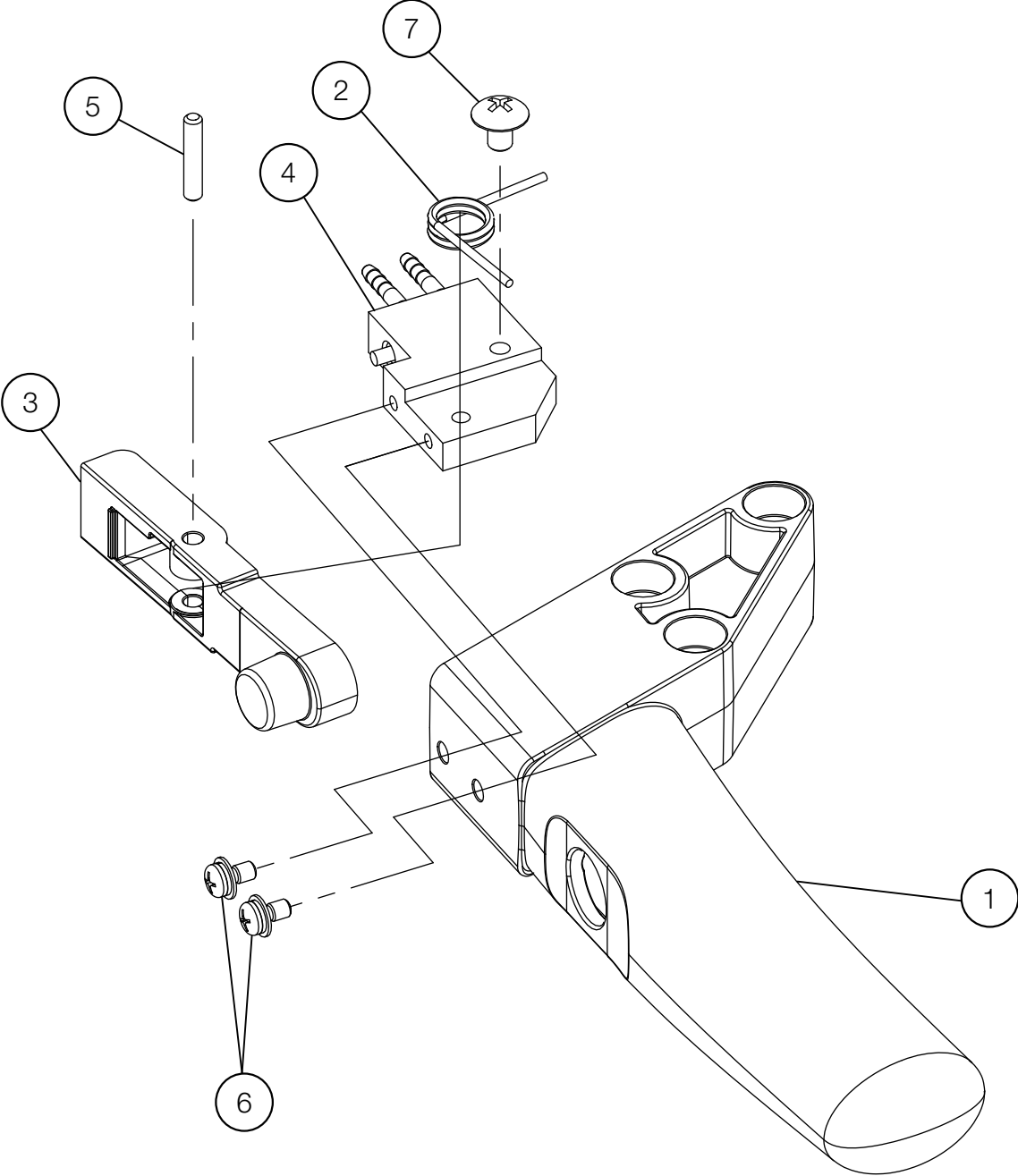
NO.	PARTS NO.	DESCRIPTION	QTY	APPLICABLE SERIAL NO.	NOTE
1	1P07HGA0	ROD ADDITIONAL HP	1		FOR ROD ADDITIONAL HP (DETACHABLE HOSE SPEC.): 1P05J3A0
2	FJMA79A0	SLEEVE 3.8 CLEAR	2		FOR ROD ADDITIONAL HP (DETACHABLE HOSE SPEC.): USA P-N: P1062
3	1E03YJA0	SLEEVE 2.7X3.3	2		FOR ROD ADDITIONAL HP (DETACHABLE HOSE SPEC.): USA P-N: P1061
4	1E05GVA0	HP HOSE	1		
5	1P07HLA0	NEEDLE VALVE ASSEMBLY WITH 1.8 BF FOR WATER	1		FOR ROD ADDITIONAL HP (DETACHABLE HOSE SPEC.): 1P06K1A0

SUB TRAY PARTS



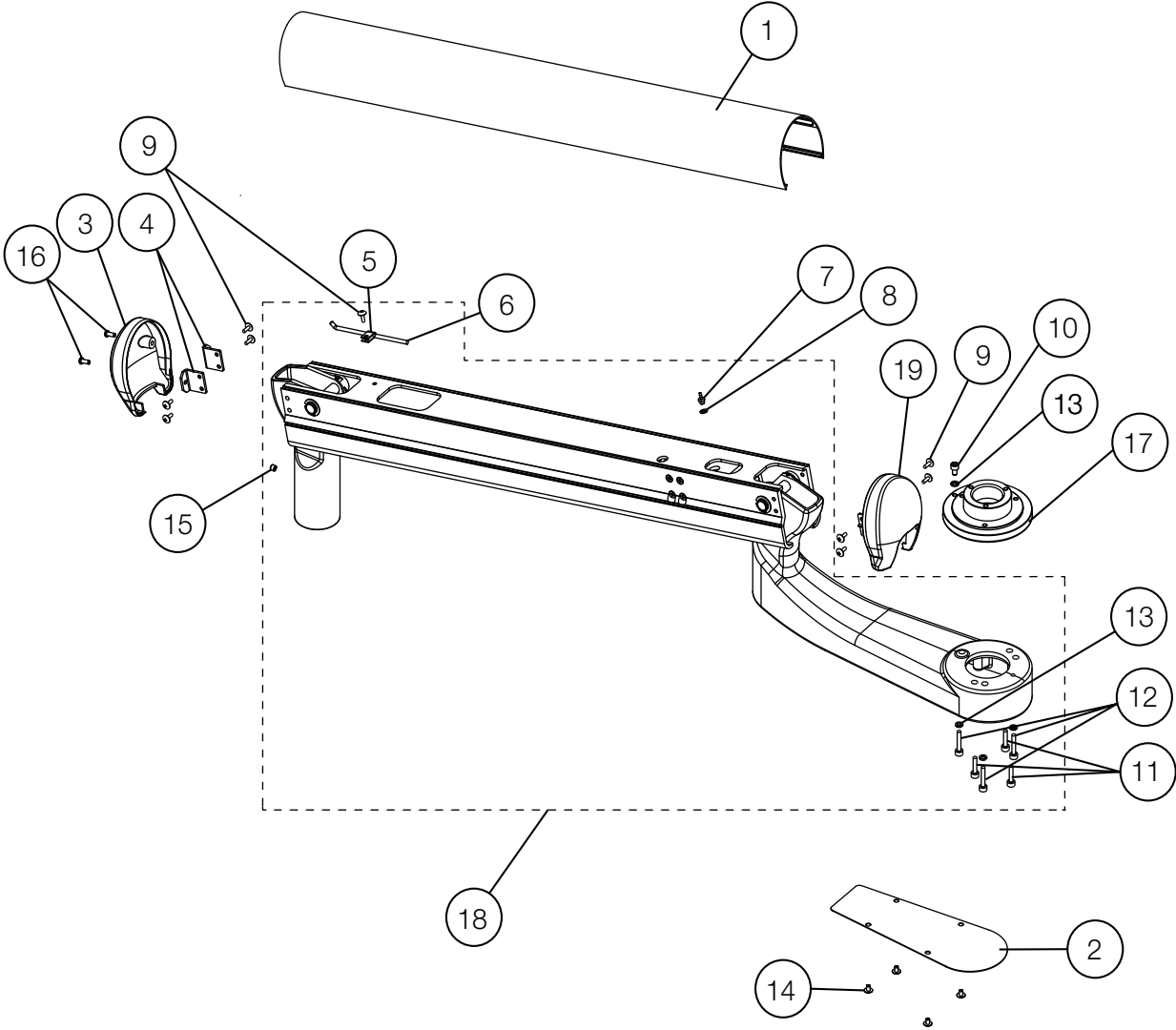
NO.	PARTS NO.	DESCRIPTION	QTY	APPLICABLE SERIAL NO.	NOTE
1	1A0MZBCV	TRAY ARM	1	VW19G0007	
2	1A03A0A0	BRAKE RING	1		
3	1A0MZAA0	TRAY FLANGED SHAFT	1		
4	ZA761NLG	HEX SOCKET HEAD SCREW M5x5 BLACK	4		
5	ZA761NYU	SOCKET HEAD SCREW M5X25 SUS	1		
6	ZA112LRU	FLAT HEAD SCREW M4X10	3		
7	1A0QPPAV	USA SUB TRAY	1		
8	1E02E4A0	THRUST WASHER AS-1103	3		
9	1E02E6A0	NEEDLE BEARING AXK-1103	1		
10	FJCA19A0	U NUT M16XP2	1		
11	1E06NPA0	NUT CAP M16	1		
12	1P05KGA0	TRAY ARM ASSEMBLY	1		

TABLE INTERNAL PARTS



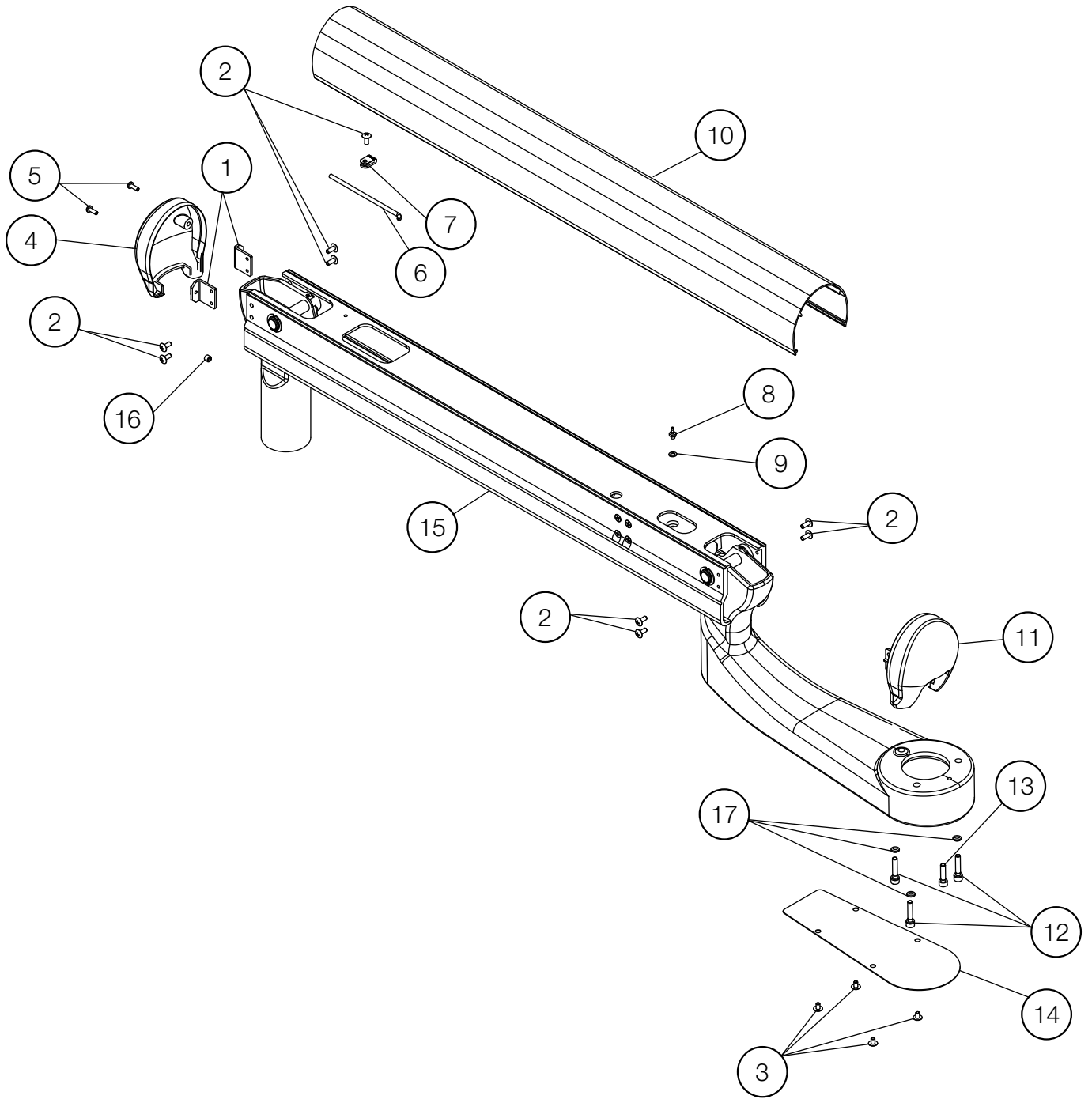
NO.	PARTS NO.	DESCRIPTION	QTY	APPLICABLE SERIAL NO.	NOTE
1	1A0MZ5A0	ROD HANDLE	1		
2	1A0MZDA0	SPRING FOR LEVER	1		
3	1A0MZ2A0	AIR BRAKE LEVER	1		
4	1P05KLA0	ROD BRAKE VALVE	1		
5	1A0MZKA0	SHAFT FOR LEVER	1		
6	ZA88JJNY	PAN HEAD SEMS SCREW 3P M3X6 CHROME	2		
7	ZA114LNU	TRUSS M4X6 SUS	1		

BALANCE ARM FOR TRADITIONAL CHAIR MOUNTED DELIVERY STYLE



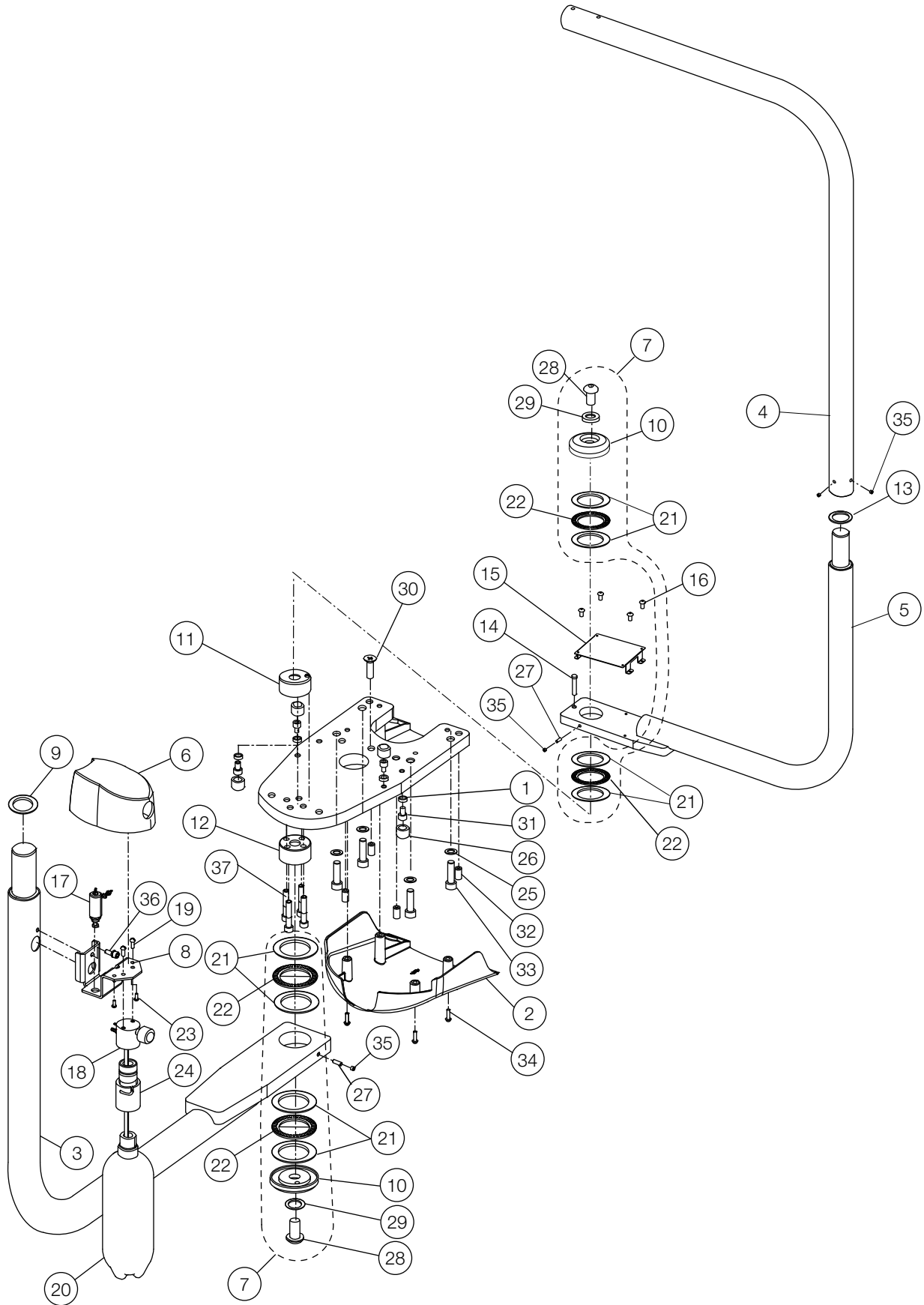
NO.	PARTS NO.	DESCRIPTION	QTY	APPLICABLE SERIAL NO.	NOTE
1	AAFK84AV	BALANCE ARM FRAME COVER	1		
2	AAFK85AV	TABLE BRACKET BOTTOM COVER	1		
3	AAFF04C0	END CAP	1		
4	AAFT87A0	BRACKET FOR ARM END CAP	2		
5	APNA19A0	NYLON CLAMP NK-2N	1		
6	CANF43B0	ADJUSTING BAR FOR SPRING	1		
7	AFFS04A0	1/16 INX10-32 BARB (PLATED)	1		USA P-N: P1052
8	AFFU48A0	WASHER 10-32 (SEAL)	1		USA P-N: P1055
9	ZA114LRU	TRUSS M4X10 SUS	11		
10	ZA761NPG	HEX SOCKET HEAD SCREW M5X8 BLACK	1		
11	ZA761NWG	SOCKET HEAD SCREW M5x20 BLACK	3		
12	ZA761NYG	SOCKET HEAD SCREW M5X25 BLACK	3		
13	ZB511NAU	SPRING WASHER M5	4		
14	ZA114LNU	TRUSS M4X6 SUS	4		
15	ZA774OLU	HEX SOCKET SET SCREW (CUP POINT) M6X5 SUS	2		
16	ZA111LRY	PAN HEAD SCREW M4X10 CHROME	2		
17	1A0GNGB0	TABLE ROTATION SHAFT	1		
18	1P0459A0	BALANCE ARM ASSEMBLY	1		
19	AAFF05C0	END CAP (REAR)	1		

BALANCE ARM FOR CONTINENTAL CHAIR MOUNTED DELIVERY SYSTEM



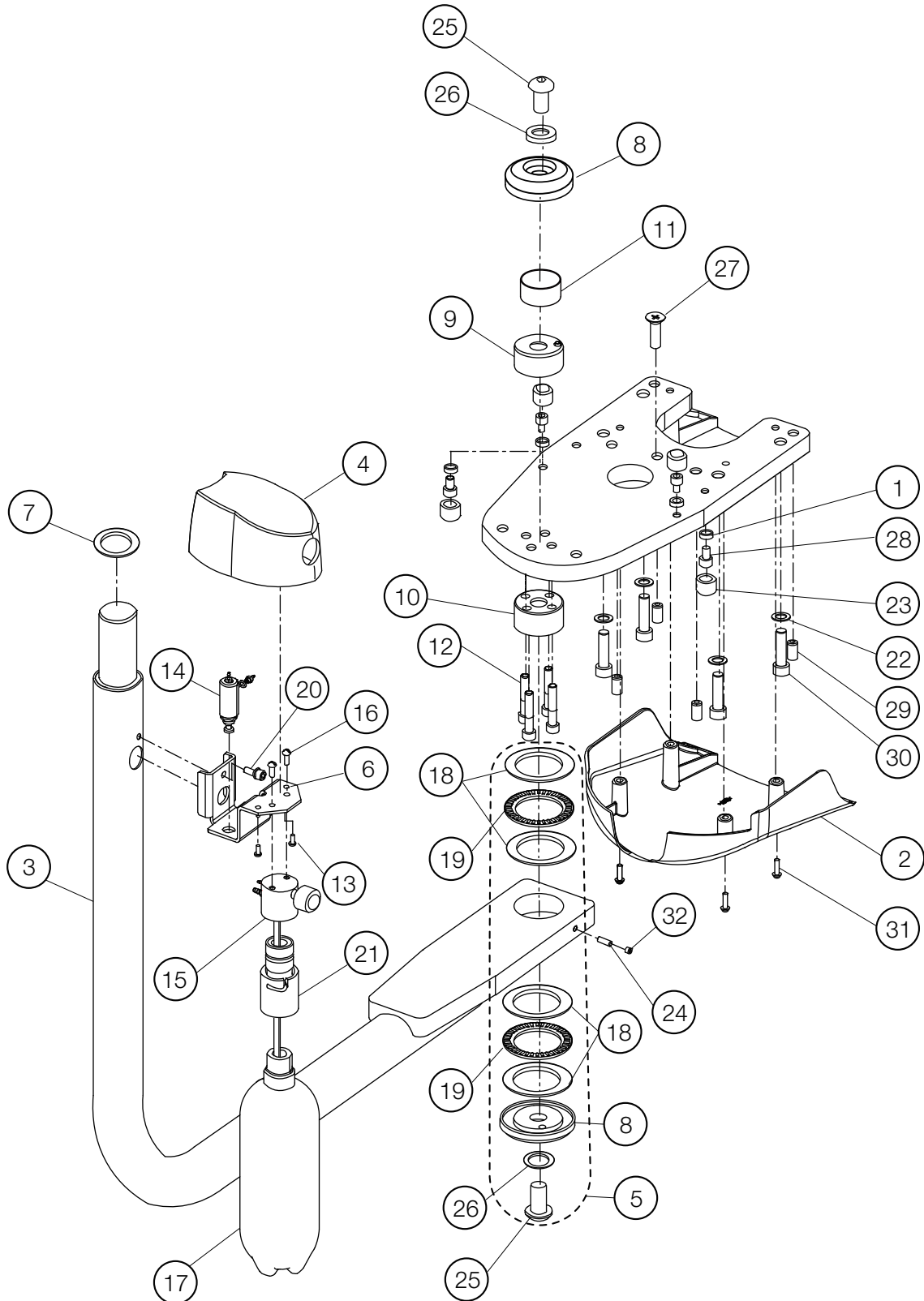
NO.	PARTS NO.	DESCRIPTION	QTY	APPLICABLE SERIAL NO.	NOTE
1	AAFT87A0	BRACKET FOR ARM END CAP	2		
2	ZA114LRU	TRUSS HEAD SCREW M4X10 SUS	9		
3	ZA114LNU	TRUSS M4X6 SUS	4		
4	AAFF04C0	END CAP	1		
5	ZA111LRY	PAN HEAD SCREW M4X10 CHROME	2		
6	CANF43B0	ADJUSTING BAR FOR SPRING	1		
7	APNA19A0	NYLON CLAMP NK-2N	1		
8	AFFS04A0	1/16 INX10-32 BARB (PLATED)	1		USA P-N: P1052
9	AFFU48A0	WASHER 10-32 (SEAL)	1		USA P-N: P1055
10	AAFK84A0	COVER FOR PIPING	1		
11	AAFF05C0	END CAP (REAR)	1		
12	ZA761NYG	SOCKET HEAD SCREW M5X25 BLACK	3		
13	ZA761NWG	SOCKET HEAD SCREW M5X20 BLACK	1		
14	AAFK85A0	BOTTOM COVER FOR TABLE BRACKET	1		
15	1P05GKA0	ROD BALANCE ARM	1		
16	ZA774OLU	HEX SOCKET SET SCREW (CUP POINT) M6X5 SUS	1		
17	ZB511NAU	SPRING WASHER ϕ 5 SUS	3		

DR. SWING ARM & LIGHT SWING ARM ASSY (AU-HV3370SQ)



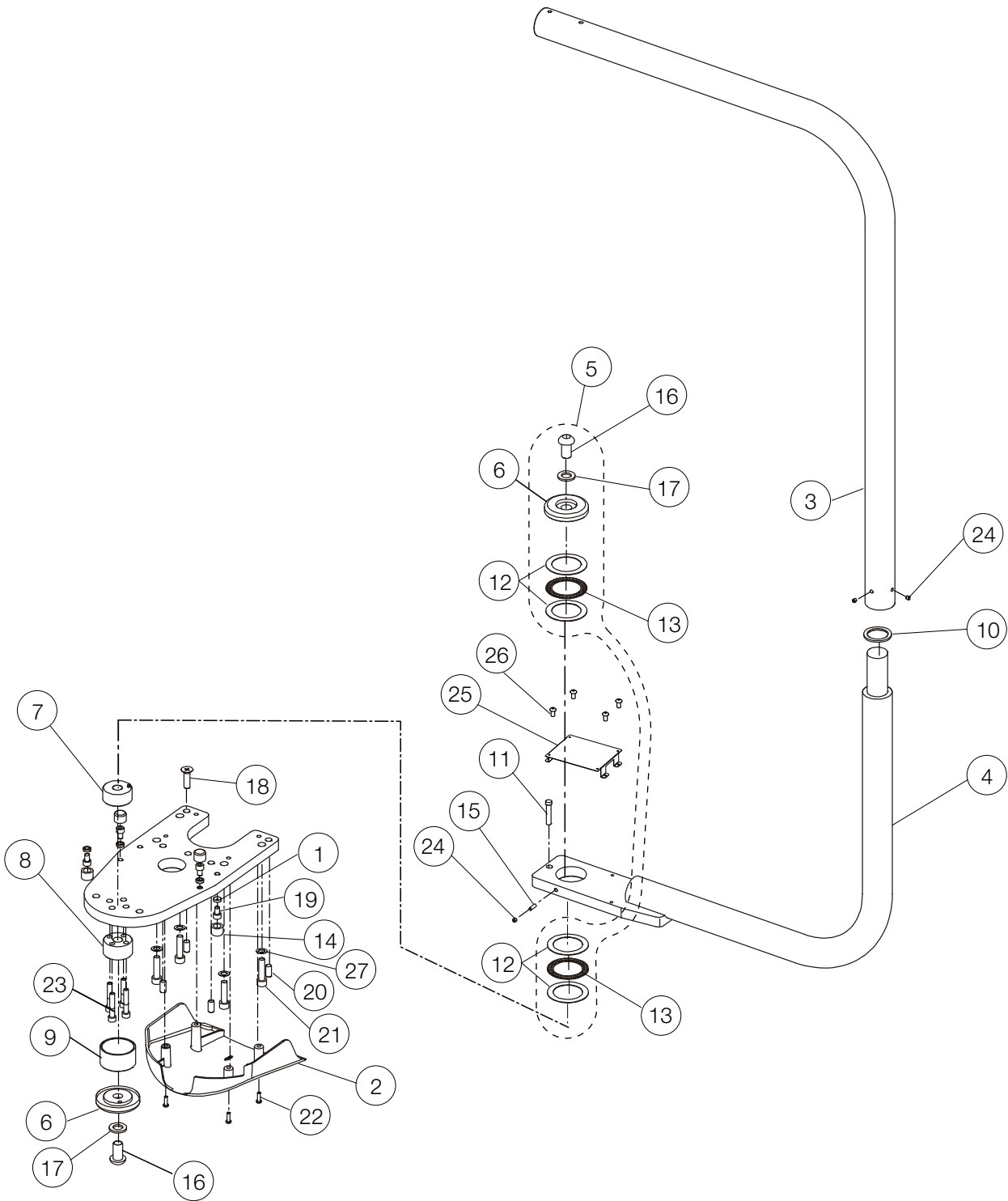
NO.	PARTS NO.	DESCRIPTION	QTY	APPLICABLE SERIAL NO.	NOTE
1	AAET81A0	SPACER FOR ARM STOPPER	4		
2	AAFB95C0	HOSE COVER	1		
3	1A0HHGAV	DOCTOR SWING ARM (EVOGUE)	1		
4	1P048MA0	L-SHAPED LIGHT POLE ASSEMBLY	1		
5	1A0HCPAV	LIGHT SWING ARM	1		
6	AAFF06C0	WATER BOTTLE COVER	1		
7	1P074JA0	ROTATION WASHER ASSY	-		
8	AAFK86A0	BRACKET FOR WATER BOTTLE (SA)	1		
9	AAFT81B0	WASHER FOR ROTATION SHAFT	1	VG16F0001	
10	AAFT92A0	SWING ARM ROTATION WASHER	2		
11	1P04ANA0	UPPER SHAFT ASSEMBLY	1		
12	1P04APA0	LOWER SHAFT ASSEMBLY	1		
13	AAFU04B0	LIGHT POLE ROTATION WASHER	1	VG16E0021	
14	AAFU05A0	ROTATION STOPPER	1		
15	1A0H3KAV	BRACKET FOR DENTAL LIGHT PCB	1		
16	ZA114LNU	TRUSS M4X6 SUS	4		
17	1P04ALA0	MINI-AIR REGULATOR W/ BARB AND WASHER	1		
18	AFFS17A0	WATER BOTTLE HEAD W/ PRESSURE 1/8" NPTF GAUGE PORT	1		USA P-N: RC18041DBEL
19	AFFS19A0	10-32 1/2 SCREW SUS	2		USA P-N: RF-2010
20	AFFS21B0	WATER BOTTLE 2L	1	-	USA P-N: D8164
21	AFFS40A0	THRUST WASHER (AS-1110)	8		
22	AFFS41A0	THRUST BEARING (AXK-1111)	4		
23	FJHA34A0	PAN HEAD SCREW M4X16 CHROME	2		
24	AFFV15A0	QUICK COUPLER KIT	1	-	USA P-N: D8941
25	ZB511QAY	SPRING WASHER M10 CHROME	4		
26	DAMS68AA	RUBBER RING FOR ARM STOPPER	4		
27	FAAA30A0	BRAKE SHOE	2		
28	ZSA11TZU	BUTTON CAP SCREW M16X30 SUS	2		
29	ZB562TAU	WASHER 16X32X2 SUS	2		
30	ZSA01Q1U	FLAT HEAD SOCKET CAP SCREW M10X35 SUS	1		
31	ZA761PSG	HEX SOCKET BOLT M8X12 BLACK	4		
32	ZA771QWU	SET SCREW M10X20	4		
33	ZA761Q2G	HEX SOCKET HEAD SCREW M10X40 BLACK	4		
34	ZA887NUU	PAN HEAD SEMS SCREW 2P M5X16 SUS	4		
35	ZA774OLU	HEX SOCKET SET SCREW (CUP POINT) M6X5 SUS	4		
36	ZA761O#U	HEX SOCKET BOLT M6X15 SUS	1		
37	ZA762P3G	HEX SOCKET BOLT M8X45	4		

DR. SWING ARM (AU-HV3375SQ)



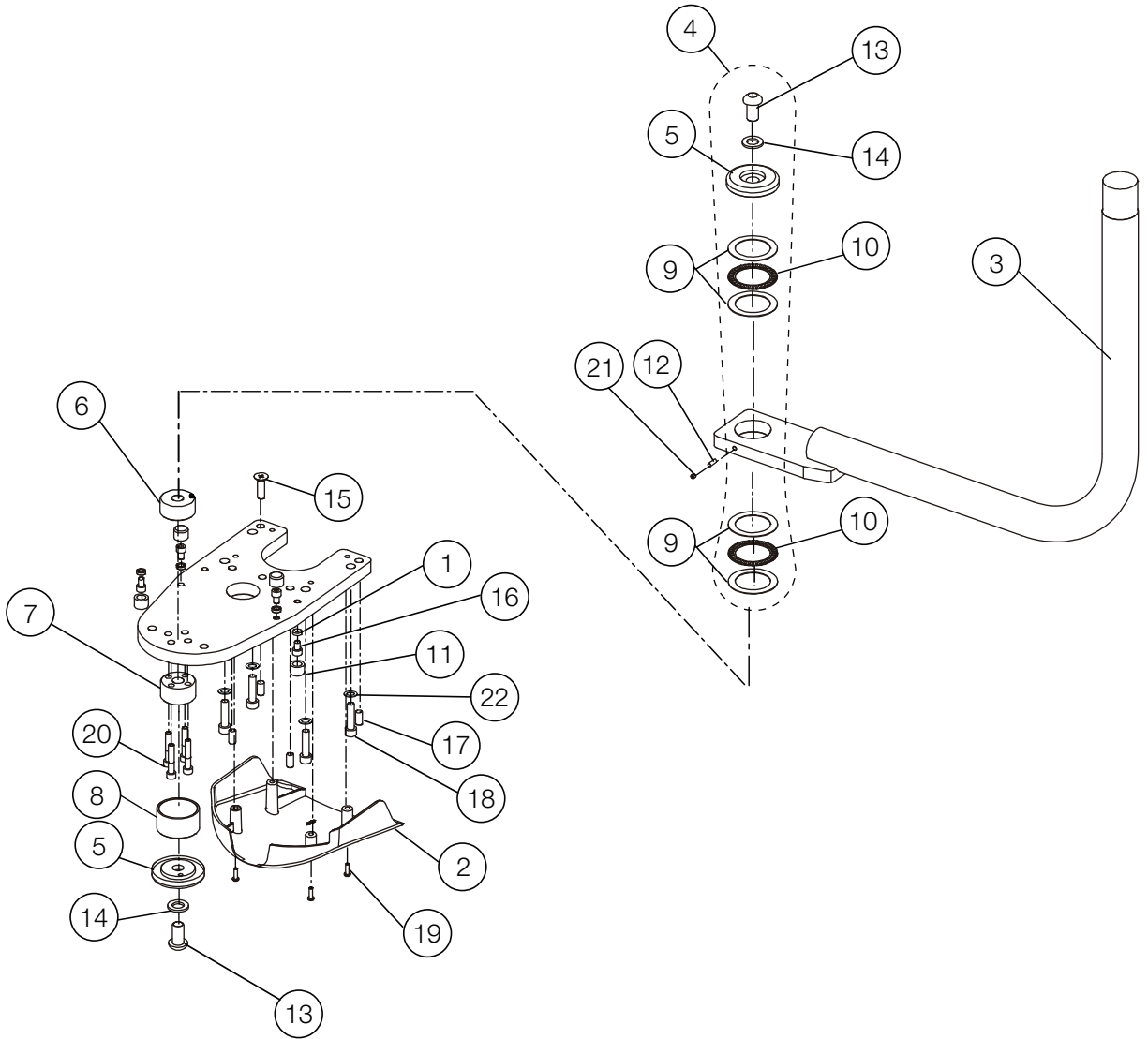
NO.	PARTS NO.	DESCRIPTION	QTY	APPLICABLE SERIAL NO.	NOTE
1	AAET81A0	SPACER FOR ARM STOPPER	4		
2	AAFB95C0	HOSE COVER	1		
3	1A0HHGAV	DOCTOR SWING ARM (EVOGUE)	1		
4	AAFF06C0	WATER BOTTLE COVER	1		
5	1P074JA0	ROTATION WASHER ASSY	-		
6	AAFK86A0	WATER BOTTLE BRACKET (SA)	1		
7	AAFT81B0	WASHER FOR ROTATION SHAFT	1	VG16F0001	
8	AAFT92A0	SWING ARM ROTATION WASHER	2		
9	1P04ANA0	UPPER SHAFT ASSEMBLY	1		
10	1P04APA0	LOWER SHAFT ASSEMBLY	1		
11	AAFU03A0	COVER FOR ARMLESS UNIT	1		
12	ZA762P3G	CAP SCREW M8X45 (FULLY THREADED) BLACK	4		
13	FJHA34A0	PAN HEAD SCREW M4X16 CHROME	2		
14	1P04ALA0	MINI-AIR REGULATOR W/ BARB AND WASHER	1		
15	AFFS17A0	WATER BOTTLE HEAD W/ PRESSURE 1/8" NPTF GAUGE PORT	1		USA P-N: RC18041DBEL
16	AFFS19A0	10-32 1/2 SCREW SUS	2		USA P-N: RF-2010
17	AFFS21B0	WATER BOTTLE 2L	1	-	USA P-N: D8164
18	AFFS40A0	THRUST WASHER (AS-1110)	4		
19	AFFS41A0	THRUST BEARING (AXK-1110)	2		
20	ZA761O#U	HEX SOCKET BOLT M6X15 SUS	1		
21	AFFV15A0	QUICK COUPLER KIT	1	-	USA P-N: D8941
22	ZB511QAY	SPRING WASHER M10 CHROME	4		
23	DAMS68AA	RUBBER RING FOR ARM STOPPER	4		
24	FAAA30A0	BRAKE SHOE	1		
25	ZSA11TZU	BUTTON CAP SCREW M16X30 SUS	2		
26	ZB562TAU	FLAT WASHER 16X32X2 SUS	2		
27	ZSA01Q1U	FLAT HEAD SOCKET CAP SCREW M10X35 SUS	1		
28	ZA761PSG	HEX SOCKET BOLT M8X12 BLACK	4		
29	ZA771QWU	SET SCREW M10X20	4		
30	ZA761Q2G	HEX SOCKET HEAD SCREW M10X40 BLACK	4		
31	ZA887NUU	PAN HEAD SEMS SCREW 2P M5X16 SUS	4		
32	ZA774OLU	HEX SOCKET SET SCREW (CUP POINT) M6X5 SUS	1		

LIGHT SWING ARM (AU-HV3330SQ)



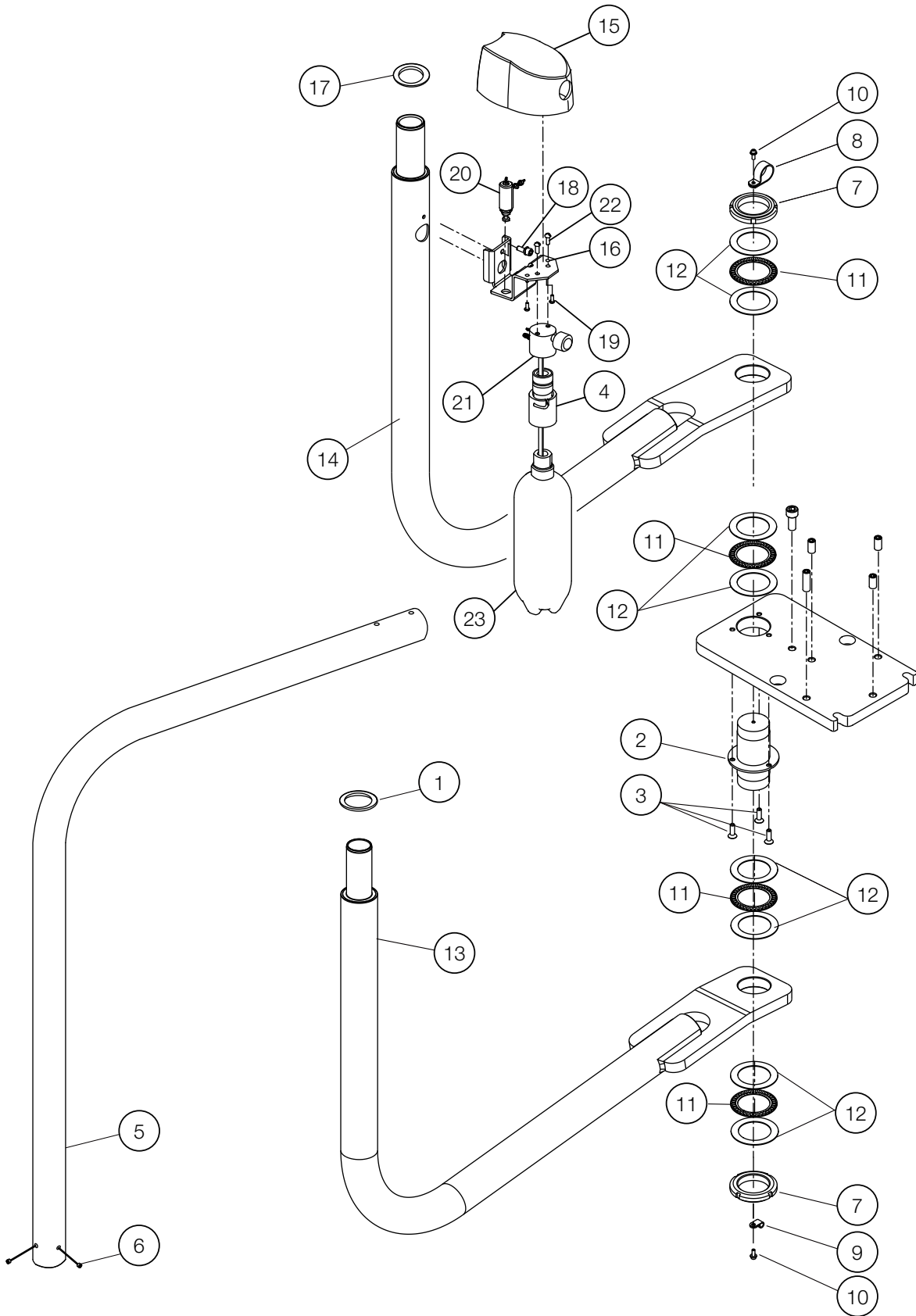
NO.	PARTS NO.	DESCRIPTION	QTY	APPLICABLE SERIAL NO.	NOTE
1	AAET81A0	SPACER FOR ARM STOPPER	4		
2	AAFB95C0	HOSE COVER	1		
3	1P048MA0	L-SHAPED LIGHT POLE ASSEMBLY	1		
4	1A0HCPAV	LIGHT SWING ARM	1		
5	1P074JA0	ROTATION WASHER ASSY	-		
6	AAFT92AV	SWING ARM ROTATION WASHER	2		
7	1P04ANA0	UPPER SHAFT ASSEMBLY	1		
8	1P04APA0	LOWER SHAFT ASSEMBLY	1		
9	AAFU03A0	COVER FOR ARMLESS UNIT	1		
10	AAFU04B0	LIGHT POLE ROTATION WASHER	1	VG16E0021	
11	AAFU05A0	ROTATION STOPPER	1		
12	AFFS40A0	THRUST WASHER (AS-1110)	4		
13	AFFS41A0	THRUST BEARING (AXK-1110)	2		
14	DAMS68AA	RUBBER RING FOR ARM STOPPER	4		
15	FAAA30A0	BRAKE SHOE	1		
16	ZSA11TZU	BUTTON CAP SCREW M16X30 SUS	2		
17	ZB562TAU	FLAT WASHER 16X32X2 SUS	2		
18	ZSA01Q1U	FLAT HEAD SOCKET CAP SCREW M10X35 SUS	1		
19	ZA761PSG	HEX SOCKET BOLT M8X12 BLACK	4		
20	ZA774QWU	CAP POINT SET SCREW M10X20 SUS	4		
21	ZA761Q2G	HEX SOCKET HEAD SCREW M10X40 BLACK	4		
22	ZA887NUU	PAN HEAD SEMS SCREW 2P M5X16 SUS	4		
23	ZA762P3G	CAP SCREW M8X45 (FULLY THREADED) BLACK	4		
24	ZA774OLU	HEX SOCKET SET SCREW (CUP POINT) M6X5 SUS	3		
25	1A0H3KAV	BRACKET FOR DENTAL LIGHT PCB	1		
26	ZA114LNU	TRUSS M4X6 SUS	4		
27	ZB511QAY	SPRING WASHER M10 CHROME	4		

MONITOR SWING ARM (AU-HV3390MS)



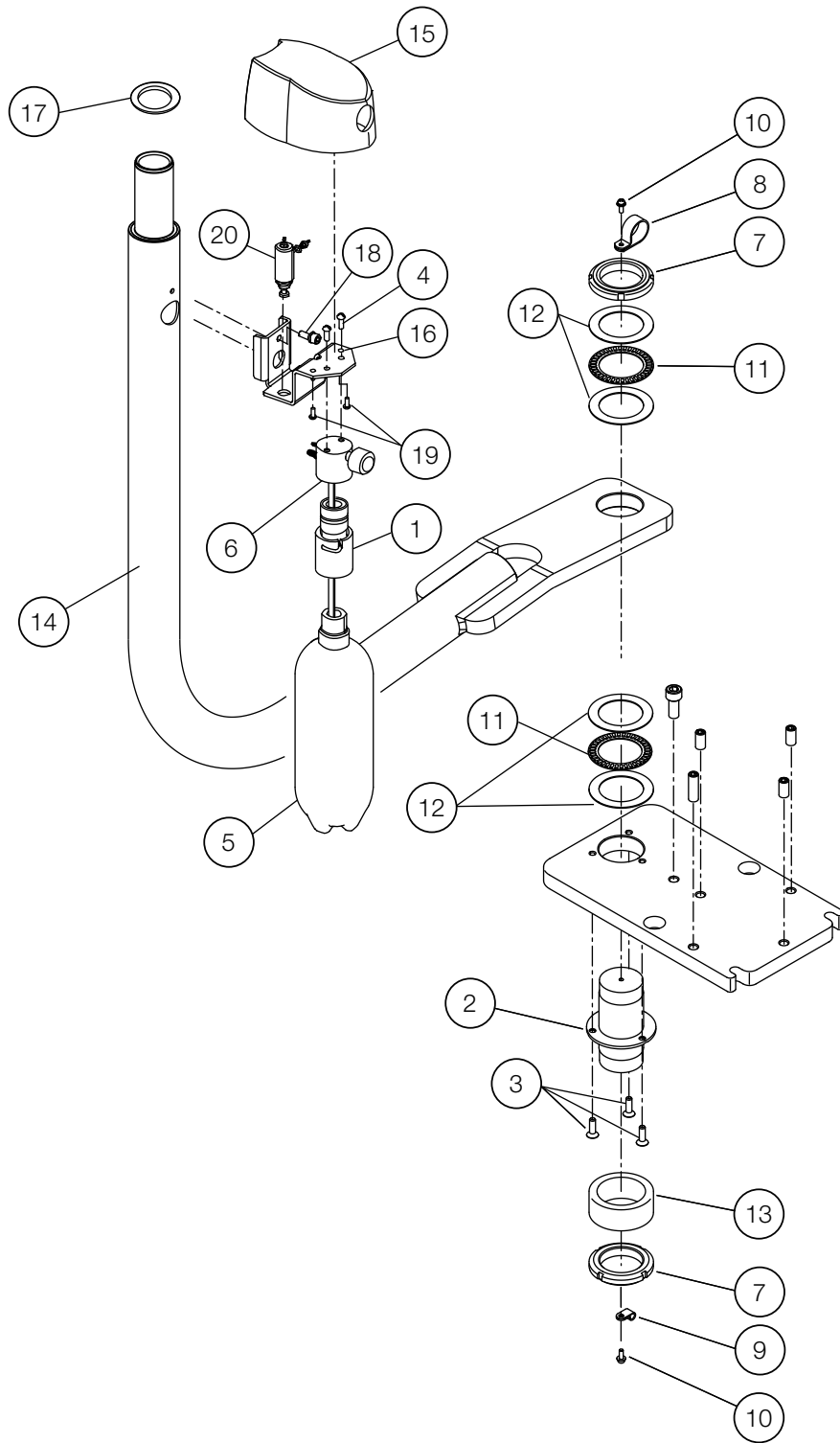
NO.	PARTS NO.	DESCRIPTION	QTY	APPLICABLE SERIAL NO.	NOTE
1	AAET81A0	SPACER FOR ARM STOPPER	4		
2	AAFB95C0	HOSE COVER	1		
3	1A0HHFAV	MONITOR SWING ARM (EVOGUE)	1		
4	1P074JA0	ROTATION WASHER ASSY	-		
5	AAFT92AV	SWING ARM ROTATION WASHER	2		
6	1P04ANA0	UPPER SHAFT ASSEMBLY	1		
7	1P04APA0	LOWER SHAFT ASSEMBLY	1		
8	AAFU03A0	COVER FOR ARMLESS UNIT	1		
9	AFFS40A0	THRUST WASHER (AS-1110)	4		
10	AFFS41A0	THRUST BEARING (AXK-1111)	2		
11	DAMS68AA	RUBBER RING FOR ARM STOPPER	4		
12	FAAA30A0	BRAKE SHOE	1		
13	ZSA11TZU	BUTTON CAP SCREW M16X30 SUS	2		
14	ZB562TAU	FLAT WASHER 16X32X2 SUS	2		
15	ZSA01Q1U	FLAT HEAD SOCKET CAP SCREW M10X35 SUS	1		
16	ZA761PSG	HEX SOCKET BOLT M8X12 BLACK	4		
17	ZA774QWU	CAP POINT SET SCREW M10X20 SUS	4		
18	ZA761Q2G	HEX SOCKET HEAD SCREW M10X40 BLACK	4		
19	ZA887NUU	PAN HEAD SEMS SCREW 2P M5X16 SUS	4		
20	ZA762P3G	CAP SCREW M8X45 (FULLY THREADED) BLACK	4		
21	ZA774OLU	HEX SOCKET SET SCREW (CUP POINT) M6X5 SUS	1		
22	ZB511QAY	SPRING WASHER M10 CHROME	4		

DR. SWING ARM & LIGHT SWING ARM ASSY (AU-HV3270SX)



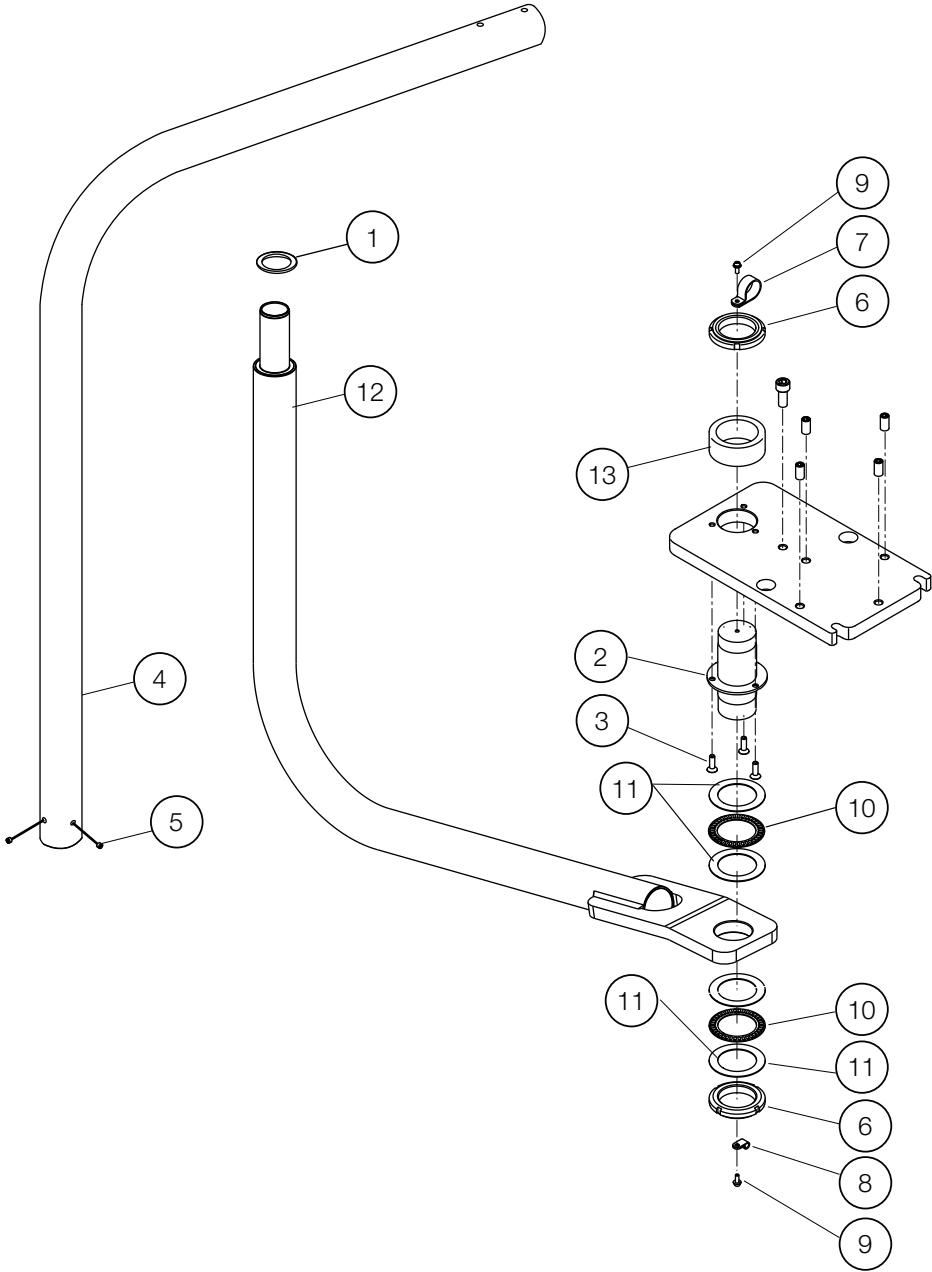
NO.	PARTS NO.	DESCRIPTION	QTY	APPLICABLE SERIAL NO.	NOTE
1	AAFU04B0	LIGHT POLE ROTATION WASHER	1	VG16E0021	
2	FATA89B0	ROTATION SHAFT	1		
3	ZSA01OWU	FLAT HEAD HEX SOCKET BOLT M6X20	3		
4	AFFV15A0	QUICK COUPLER KIT	1	-	USA P-N: D8941
5	1P048MA0	L-SHAPED LIGHT POLE ASSEMBLY	1		
6	ZA774OLU	HEX SOCKET SET SCREW (CUP POINT) M6X5 SUS	2		
7	FJTA26A0	FINE U-NUT (FU09SS)	2		
8	FJRA53A0	NYLON CLAMP SL-14N	1		
9	FJMA68A0	NYLON CLAMP (3304)	1		
10	ZA88JLRU	PAN HEAD SCREW M4X10 SUS	2		
11	FJNA55A0	NEEDLE BEARING	4		
12	FJNA56A0	THRUST WASHER (AS1109)	8		
13	1A0GV8BV	SWING MOUNT ARM ASSEMBLY FOR LIGHT	1	VG18K0020	
14	1A0GV9AV	DOCTOR SWING ARM FOR X-CALIBUR V	1	VG18K0012	
15	AAFF06C0	WATER BOTTLE COVER	1		
16	AAFK86A0	BRACKET FOR WATER BOTTLE (SA)	1		
17	AAFT81B0	WASHER FOR ROTATION SHAFT	1	VG16F0001	
18	ZA761O#U	HEX SOCKET BOLT M6X15 SUS	1		
19	FJHA34A0	PAN HEAD SCREW M4X16 CHROME	2		
20	1P04ALA0	MINI-AIR REGULATOR W/ BARB AND WASHER	1		
21	AFFS17A0	WATER BOTTLE HEAD W/ PRESSURE 1/8" NPTF GAUGE PORT	1		USA P-N: RC18041DBEL
22	AFFS19A0	10-32 1/2 SCREW SUS	2		USA P-N: RF-2010
23	AFFS21B0	WATER BOTTLE 2L	1	-	USA P-N: D8164

DR. SWING ARM (AU-HV3275SX)



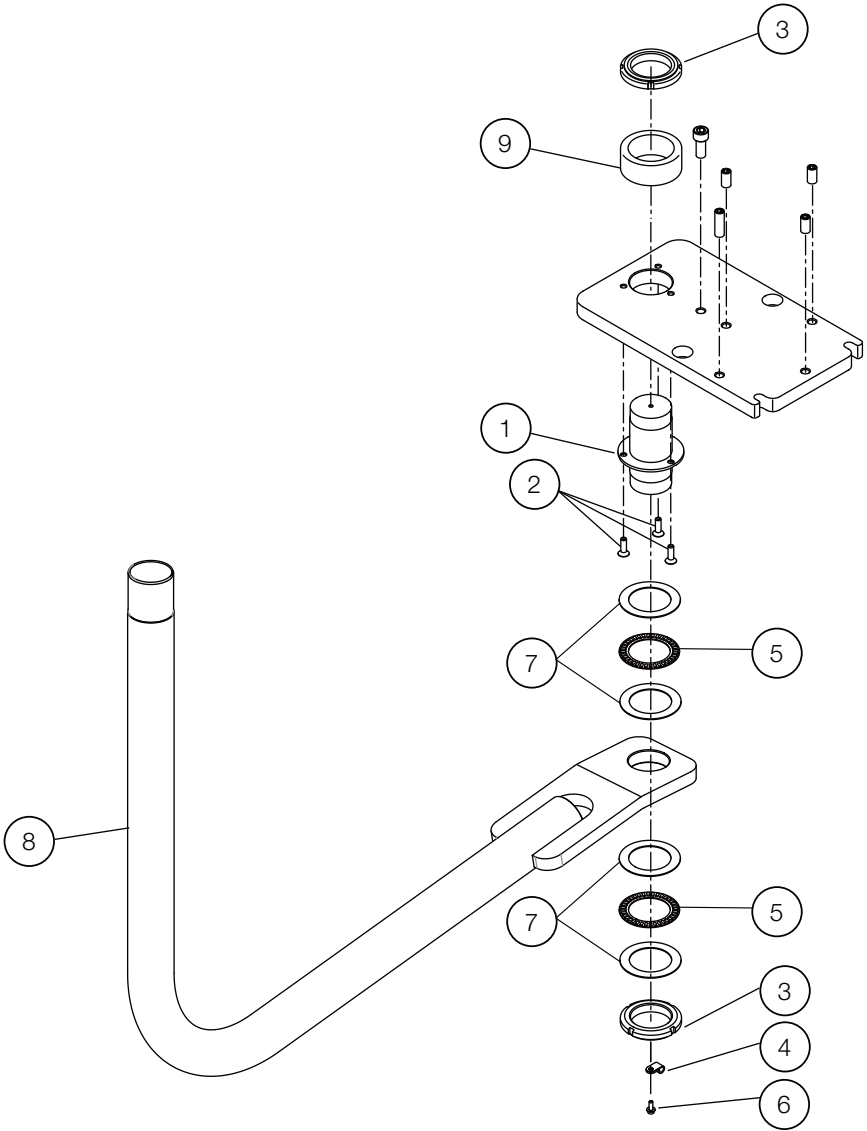
NO.	PARTS NO.	DESCRIPTION	QTY	APPLICABLE SERIAL NO.	NOTE
1	AFFV15A0	QUICK COUPLER KIT	1	-	USA P-N: D8941
2	FATA89B0	ROTATION SHAFT	1		
3	ZSA01OWU	FLAT HEAD HEX SOCKET BOLT M6X 20	3		
4	AFFS19A0	10-32 1/2 SCREW SUS	2		USA P-N: RF-2010
5	AFFS21B0	WATER BOTTLE 2L	1	-	USA P-N: D8164
6	AFFS17A0	WATER BOTTLE HEAD W/ PRESSURE 1/8" NPTF GAUGE PORT	1		USA P-N: RC18041DBEL
7	FJTA26A0	FINE U-NUT (FU09SS)	2		
8	FJRA53A0	NYLON CLAMP SL-14N	1		
9	FJMA68A0	NYLON CLAMP (3304)	1		
10	ZA88JLRU	PAN HEAD SCREW M4X10 SUS	2		
11	FJNA55A0	NEEDLE BEARING	2		
12	FJNA56A0	THRUST WASHER (AS1109)	4		
13	FATB13BV	SPACER FOR ROTATION POLE	1		
14	1A0GV9AV	DOCTOR SWING ARM FOR X-CALIBUR V	1	VG18K0012	
15	AFF06C0	WATER BOTTLE COVER	1		
16	AAF86A0	BRACKET FOR WATER BOTTLE (SA)	1		
17	AAFT81B0	WASHER FOR ROTATION SHAFT	1	VG16F0001	
18	ZA7610#U	HEX SOCKET BOLT M6X15 SUS	1		
19	FJHA34A0	PAN HEAD SCREW M4X16 CHROME	2		
20	1P04ALA0	MINI-AIR REGULATOR W/ BARB AND WASHER	1		

LIGHT SWING ARM (AU-HV3230SX)

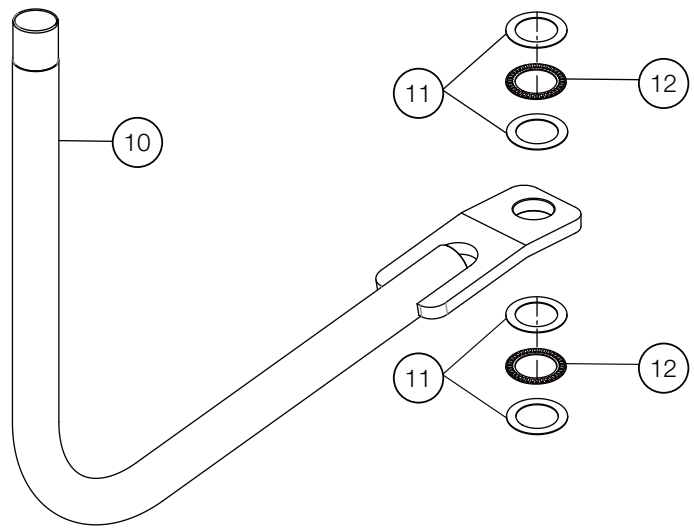


NO.	PARTS NO.	DESCRIPTION	QTY	APPLICABLE SERIAL NO.	NOTE
1	AAFU04B0	LIGHT POLE ROTATION WASHER	1	VG16E0021	
2	FATA89B0	ROTATION SHAFT	1		
3	ZSA01OWU	FLAT HEAD HEX SOCKET BOLT M6X20	3		
4	1P048MA0	L-SHAPED LIGHT POLE ASSEMBLY	1		
5	ZA774OLU	HEX SOCKET SET SCREW (CUP POINT) M6X5 SUS	2		
6	FJTA26A0	FINE U-NUT (FU09SS)	2		
7	FJRA53A0	NYLON CLAMP SL-14N	1		
8	FJMA68A0	NYLON CLAMP (3304)	1		
9	ZA88JLRU	PAN HEAD SCREW M4X10 SUS	2		
10	FJNA55A0	NEEDLE BEARING	2		
11	FJNA56A0	THRUST WASHER (AS1109)	4		
12	1A0GV8BV	SWING MOUNT ARM ASSEMBLY FOR LIGHT	1	VG18K0020	
13	FATB13BV	SPACER FOR ROTATION POLE	1		

MONITOR SWING ARM (AU-HV3290MSX)



MONITOR SWING ARM W/O BRACKET (AU-HV3289MSX)



NO.	PARTS NO.	DESCRIPTION	QTY	APPLICABLE SERIAL NO.	NOTE
1	FATA89B0	ROTATION SHAFT	1		
2	ZSA01OWU	FLAT HEAD HEX SOCKET BOLT M6X20 SUS	3		
3	FJTA26A0	FINE U-NUT (FU09SS)	2		
4	FJMA28A0	NYLON CLAMP SL-14N	1		
5	FJNA55A0	NEEDLE BEARING	2		
6	ZA88JLRU	PAN HEAD SEMS SCREW 3P M4X10 SUS	1		
7	FJNA56A0	THRUST WASHER (AS1109)	4		
8	1A0GYAAV	MONITOR SWING ARM FOR X-CALIBUR V	1		
9	FATB13BV	SPACER FOR ROTATION POLE	1		
10	1A0GYAAV	MONITOR SWING ARM FOR X-CALIBUR V	1		
11	FJNA56A0	THRUST WASHER (AS1109)	4		
12	FJNA55A0	NEEDLE BEARING	2		