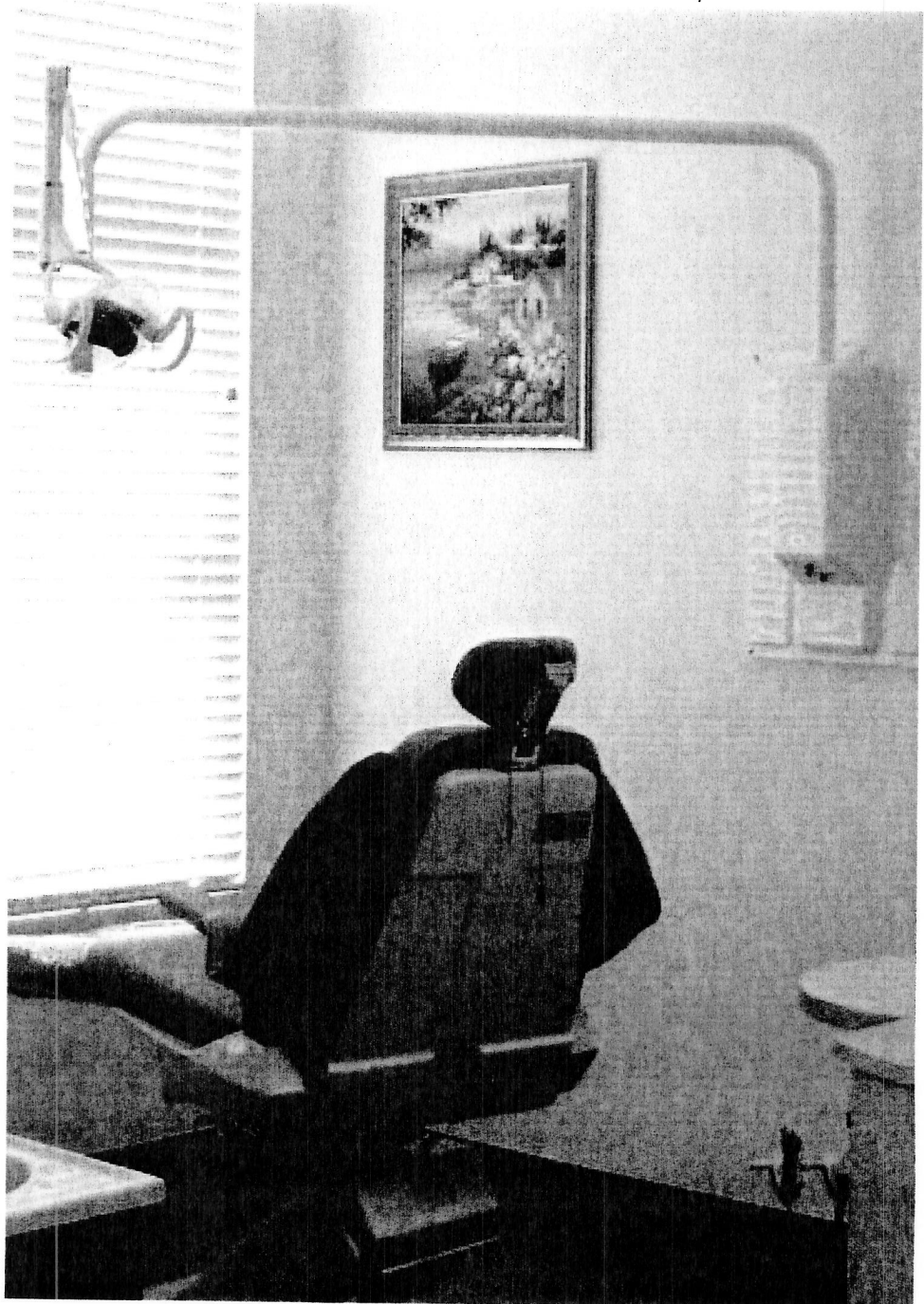


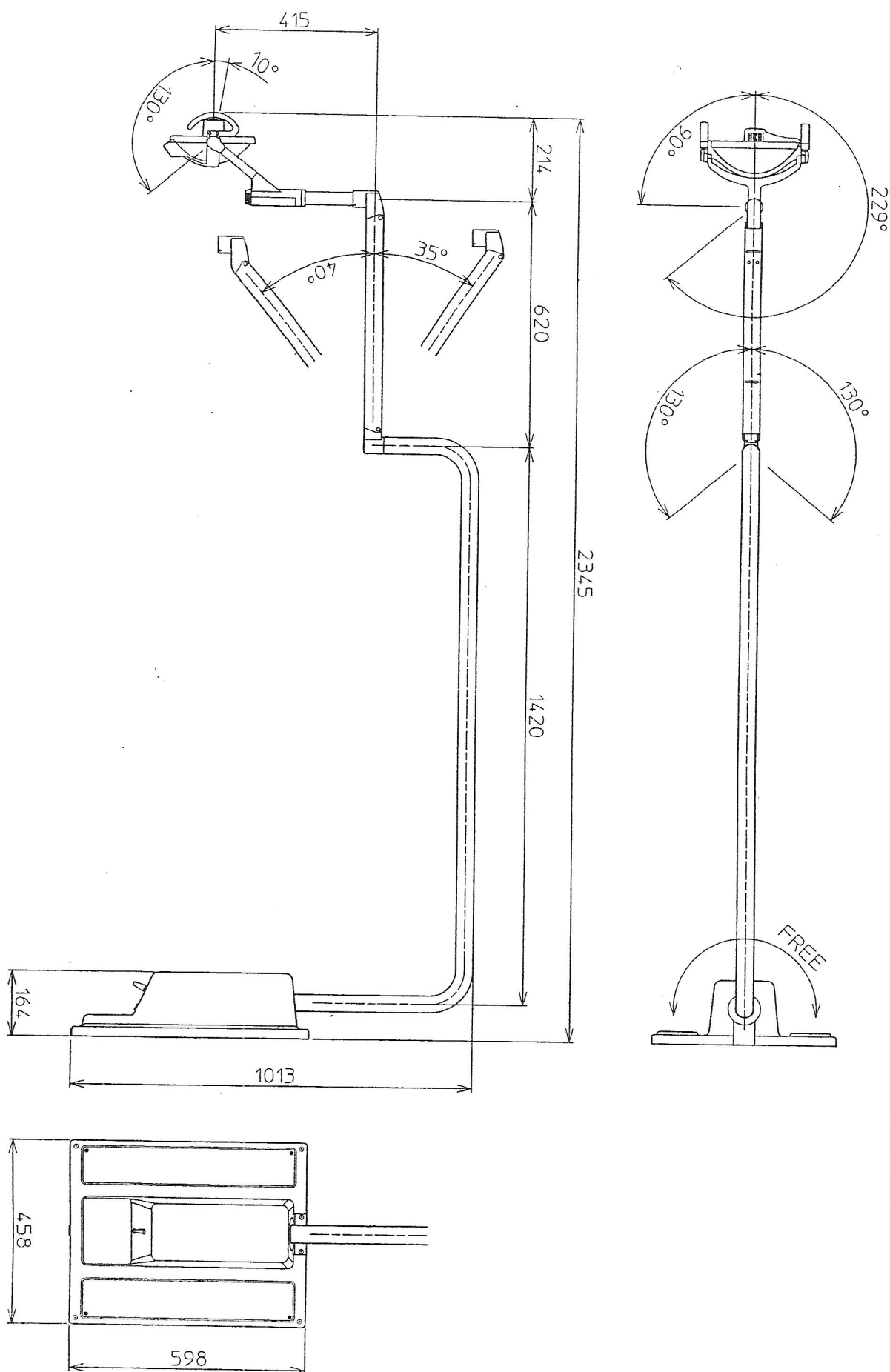
Belmont®

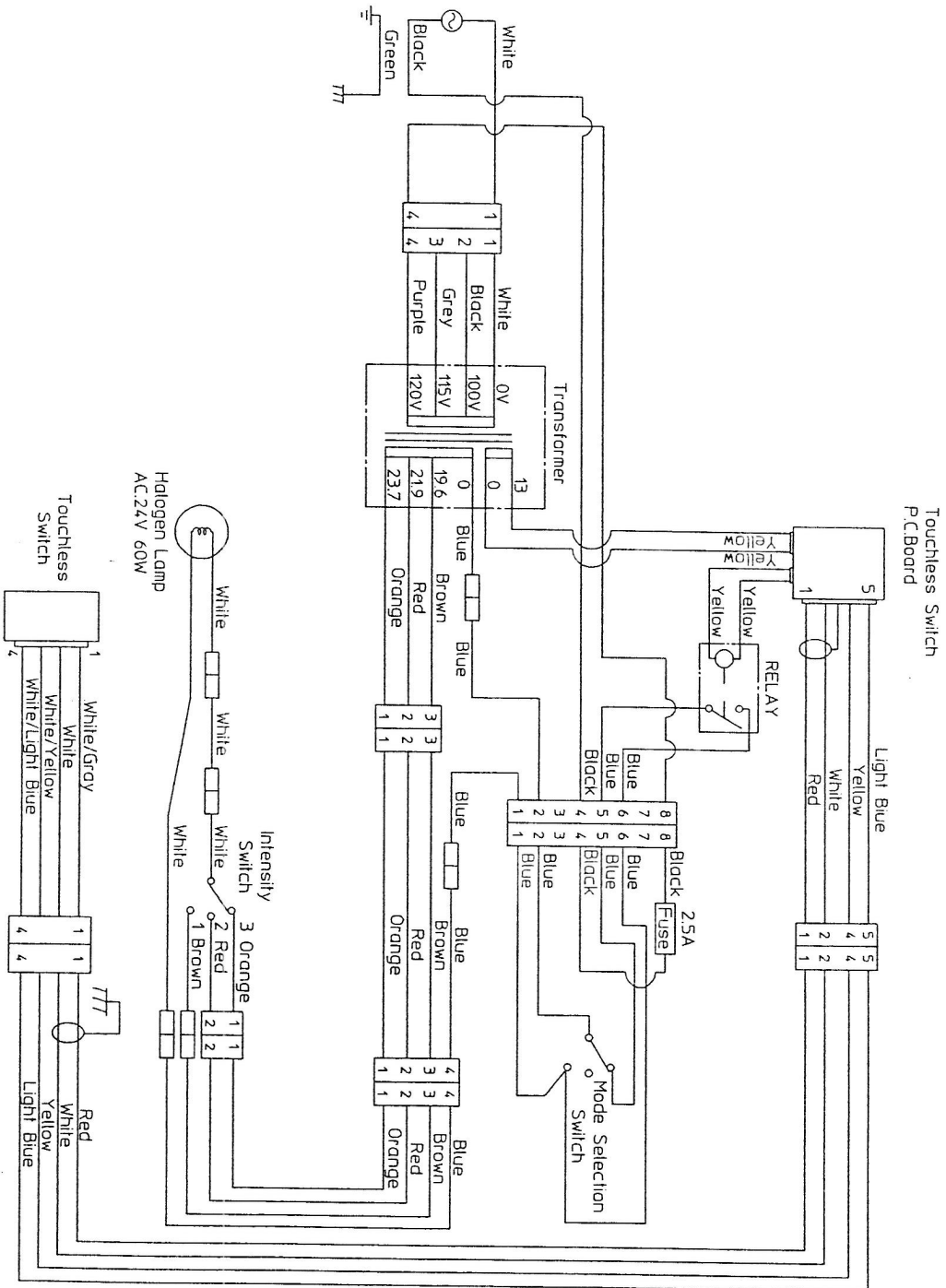
MODEL 508

CLESTA DENTAL WALL MOUNT LIGHT



INSTALLATION INSTRUCTIONS





Installation Instructions

X-Calibur Wall Mount Dental Light Model 508

Mounting Location:

The light backboard must be securely mounted to the wall studs;
DO NOT mount to metal studs.

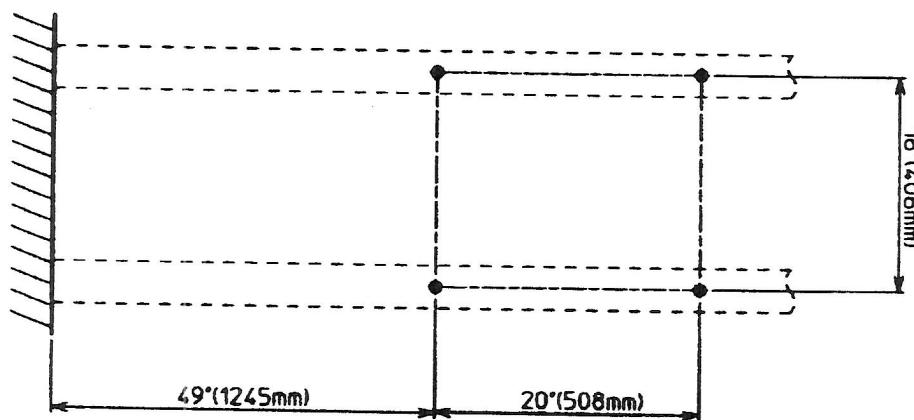
Electrical Code Compliance:

Confirm Code requirements in your area.

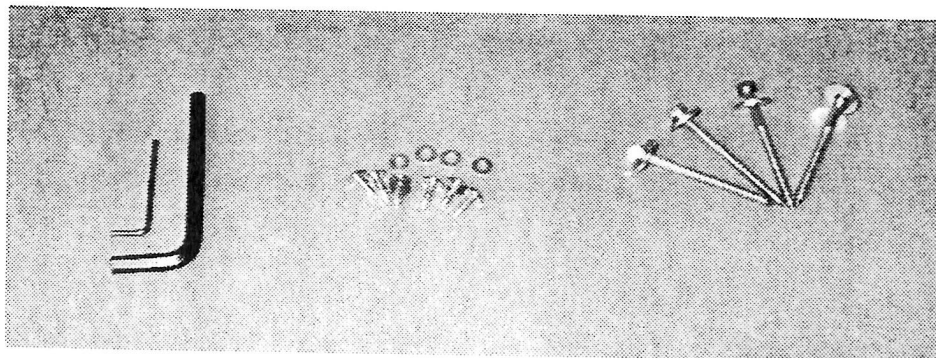
Mounting the Backboard:

1. A maximum of 71" to the top of the backboard from the floor.
2. A minimum of 18" from the top of the backboard to the ceiling.
3. It is important to locate the backboard no closer than 50" to a perpendicular wall.
4. The backboard should be approximately mid-line of the dental chair.

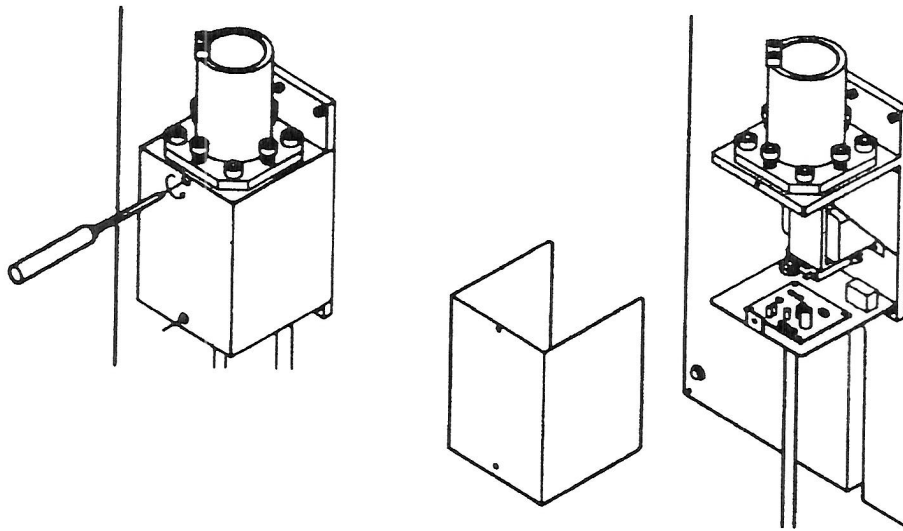
1. With a 3/16" drill, drill four(4) pilot holes approximately 2" deep, as shown.



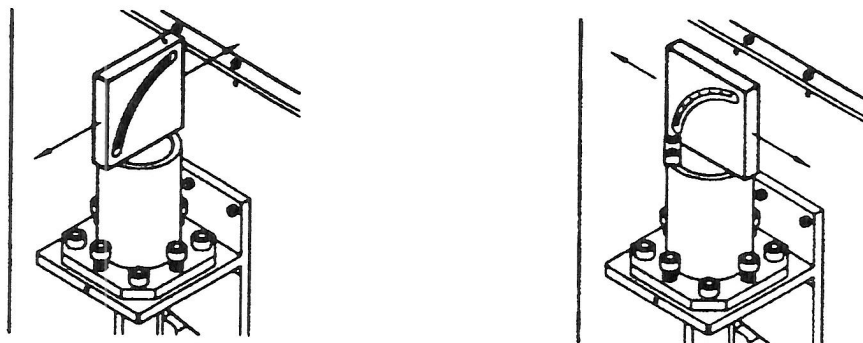
2. Mount Wall Plate Assembly to the studs, with four(4) lag bolts and washers. (supplied)



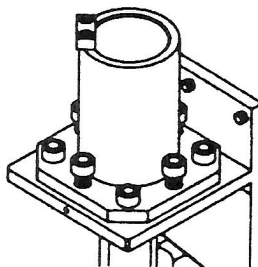
3. Remove Bracket Cover by loosening two (2) screws on it. This cover will be reattached later on.



4. Place a level on top of Pole Receptacle left to right and front to back, and adjust the level with four leveling bolts.

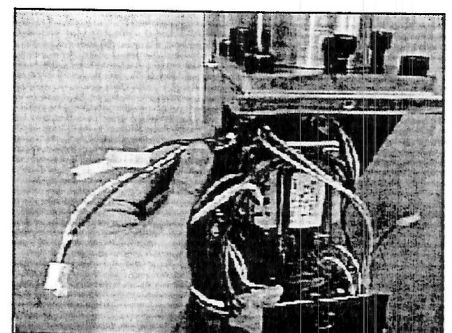
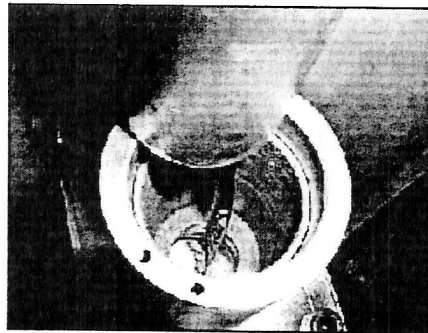
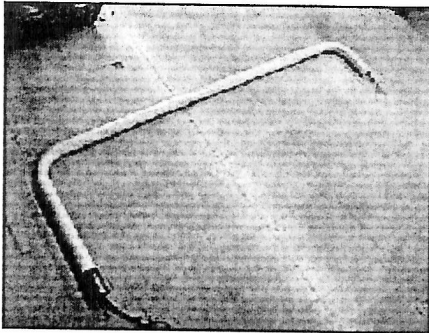


5. Remove retainer metal from top of pole receptacle. (This metal must be installed later on).

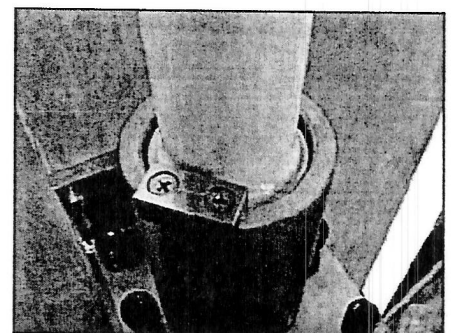
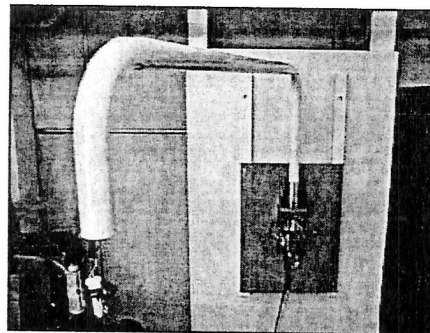
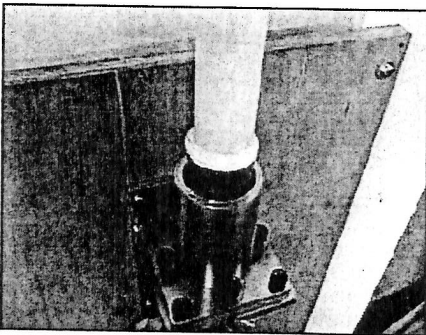


6. Light Pole Mounting:

- a. Put the wires from light pole through pole receptacle.
- b. Mount light pole on pole receptacle.
To make this job easier, hold the light pole horizontally, and swing it right and left while inserting into pole receptacle.

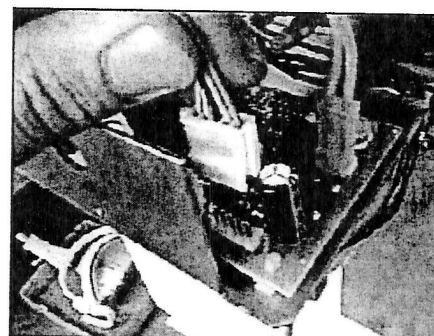
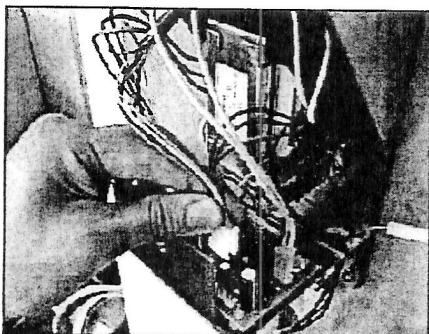


7. Re-attach retainer metal which was removed at Step 5 above.

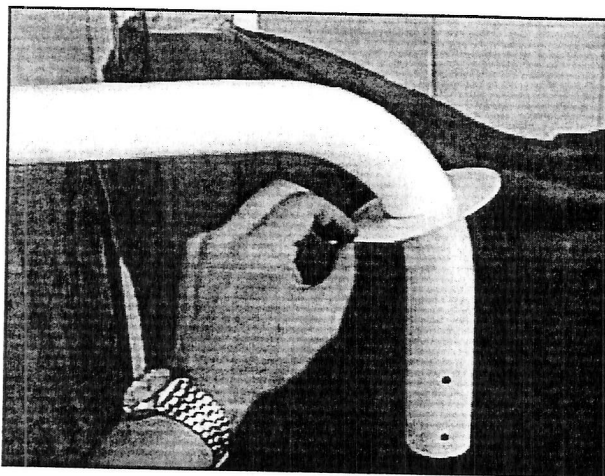


8. Connection of Wiring:

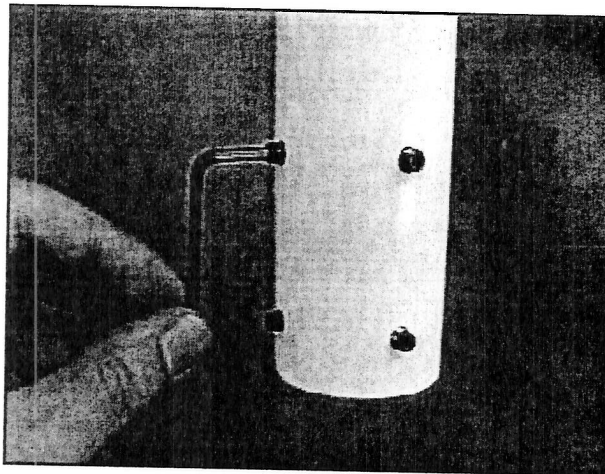
- a. 3P connector (Orange, Red, Brown) from light pole to 3P connector from transformer (Orange, Red, Brown).
- b. 5P housing (Pink, White, Black, Yellow, Blue) to pins on PCB.
- c. IP connector (Blue) to IP connector from 8P connector (Blue).



9. Put pole disc over the light pole from the other end of pole.

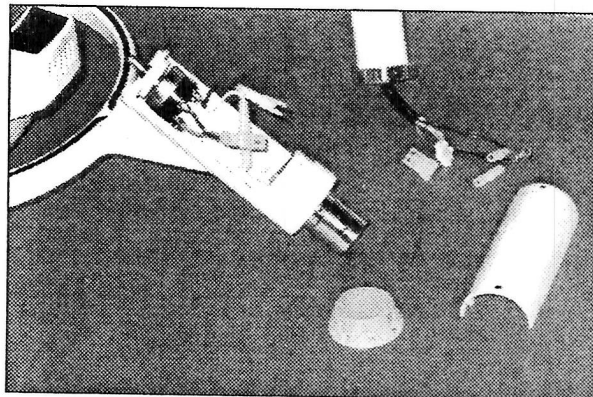
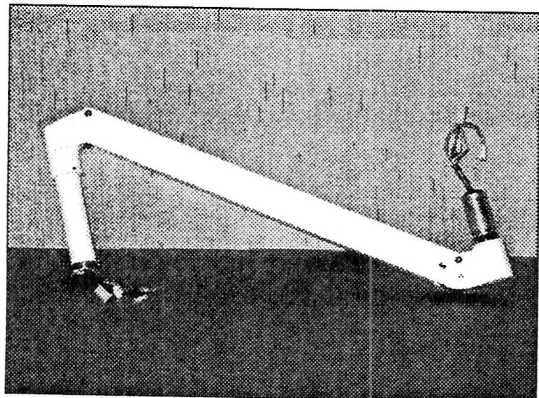


10. Loosen four (4) set screws on the light pole. (Do not remove set screws).



11. Attach light and balance arm assembly to light pole:

- Join connectors from light pole to those from balance arm.
- Insert balance arm stem to light pole (If wires stick, pull wires from wall bracket side).
- Tighten four (4) set screws loosened up at Step 10. These screws also limit the swing range of balance arm.

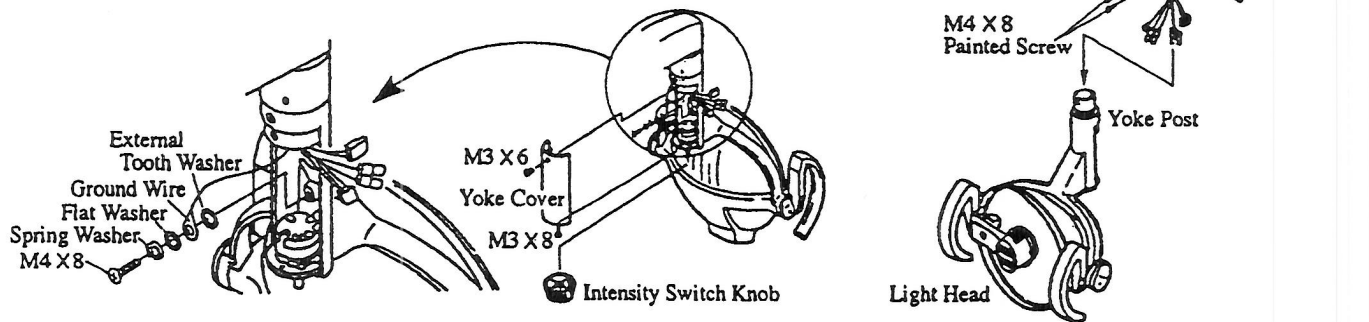


12. Install Light Head on Flex Arm.

All necessary parts are included in the carton box.

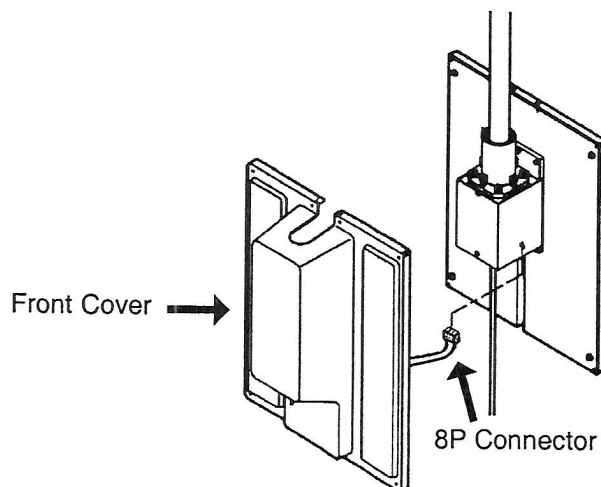
- | | |
|-----------------------------------|------------------------------------|
| • M3 X 6 Screw1pce. | • Spring Washer1pce. |
| • M3 X 8 Screw1pce. | • Flat Washer1pce. |
| • M4 X 8 Screw1pce. | • External Tooth Washer1pce. |
| • M4 X 8 Painted Screw2pcs. | • Yoke Cover1pce. |
| • M5 X 8 Set Screw2pcs. | • Intensity Switch Knob1pce. |

- Install the light head to balance arm with M4 X 8 painted screws and M5 X 8 set screws.
- Fix the ground wire to yoke post with M4 X 8 screw and washers.
- Connect the wire harness.
 - 1P connector: brown and brown
 - 1P connector: blue and white
 - 2P, 4P connector: corresponding connector
- Attach the yoke cover with M3 X 6 screw and M3 X 8 screw.
- Insert the Intensity switch knob onto switch shaft.

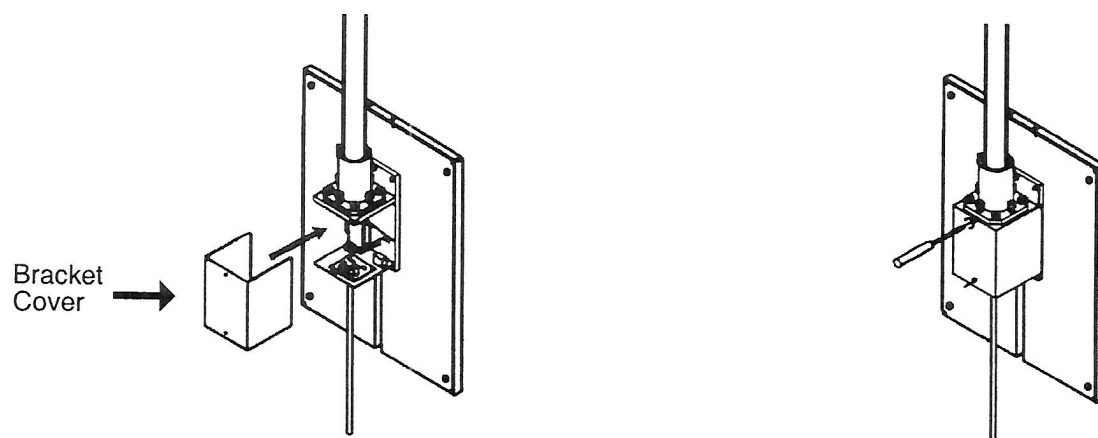


13. Connect power supply cable to proper source.

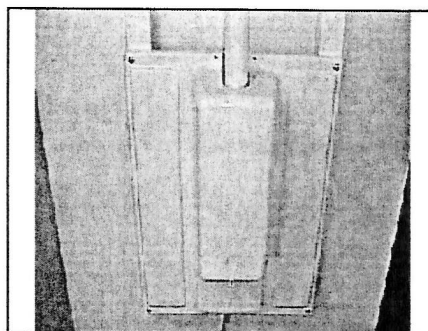
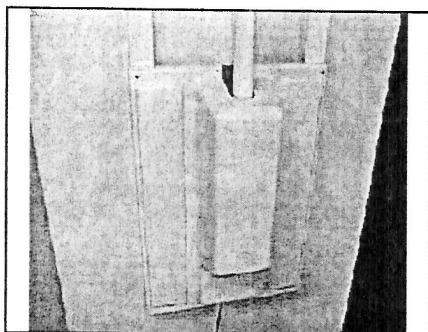
14. Connect 8P connector from sensor/manual switch on front cover to 8P connector on wall bracket.



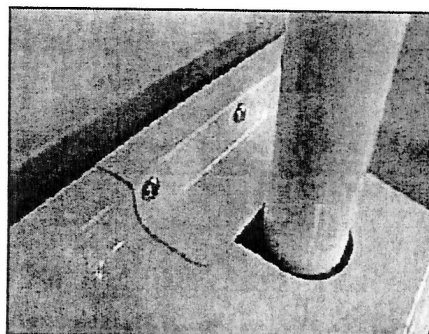
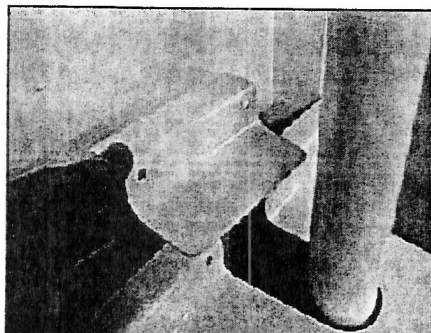
15. Reattach bracket Cover.



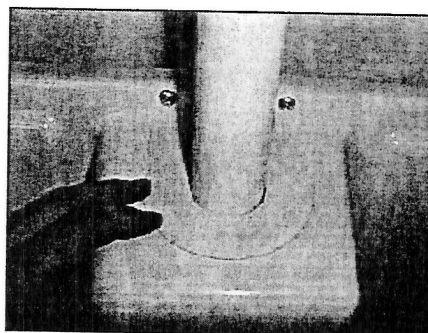
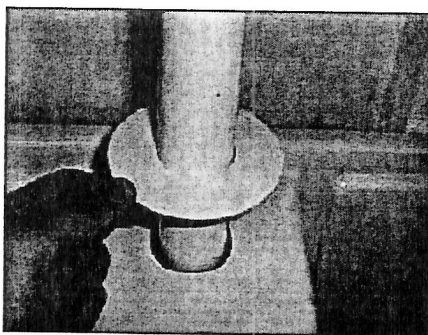
16. Place Front Cover over the Wall Plate (from upper side first, then bottom) and secure it with tapping screws with washers supplied.



17. Attach Front Top Cover and secure it with (2) tapping screws with washers supplied.



8. Slide Pole Disc down to cover the Front top Cover.



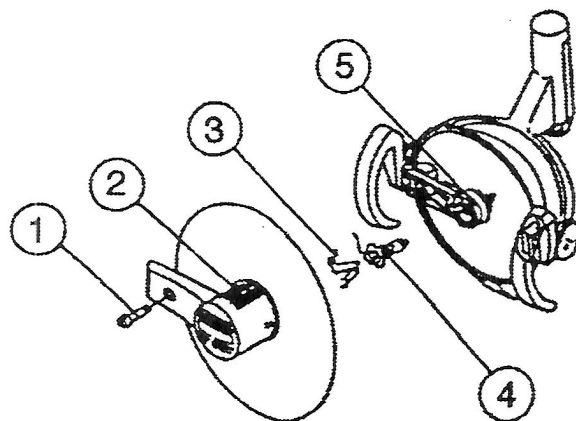
Halogen Lamp Changing

1. To install replacement halogen lamp, turn light off and turn lamp cover stopper counterclockwise (90°) to remove lamp cover.
2. Remove lamp cover and disconnect the electrical connector of halogen lamp.
3. Unlock the spring clip and pull the electrical wire of halogen lamp to remove the halogen lamp from socket.
4. Attach electrical wire and insert new lamp into housing.
5. After new lamp is seated in housing, insert and lock spring clip in position.
6. Reattach lamp cover.



CAUTION

Halogen bulb and surrounding parts may be hot immediately after the lamp goes off. Wait until they get cool down.



- (1) Lamp Cover Stopper
- (2) Lamp Cover
- (3) Spring Clip
- (4) Halogen Lamp
- (5) Socket

Cleaning

Use soft cloth or cotton only. Soak with alcohol. Clean both side of lens. Inside surface of reflector can be cleaned with a soft damp or dry cloth. Back side of the reflector should be wiped gently with a soft cloth. Extreme care should be taken not to scratch surface or mar appearance of painted surface. Exterior cleaning is all that should be necessary until after many months of use.

Specifications, Models, Colors, and Pricing are subject to change without notice.



EQUIPMENT CORPORATION

101 Belmont Drive, Somerset, NJ 08873 ■ (732) 469-5000
TOLL FREE (800) 223-1192 ■ TOLL FREE FAX (800) 280-7504

1000300
