

Quolis[®] Series

QUOLIS DENTAL LIGHT

**Model : AL-820
120V/60Hz**

Parts List

Ver. 01

Apr 21, 2009

IMPORTANT

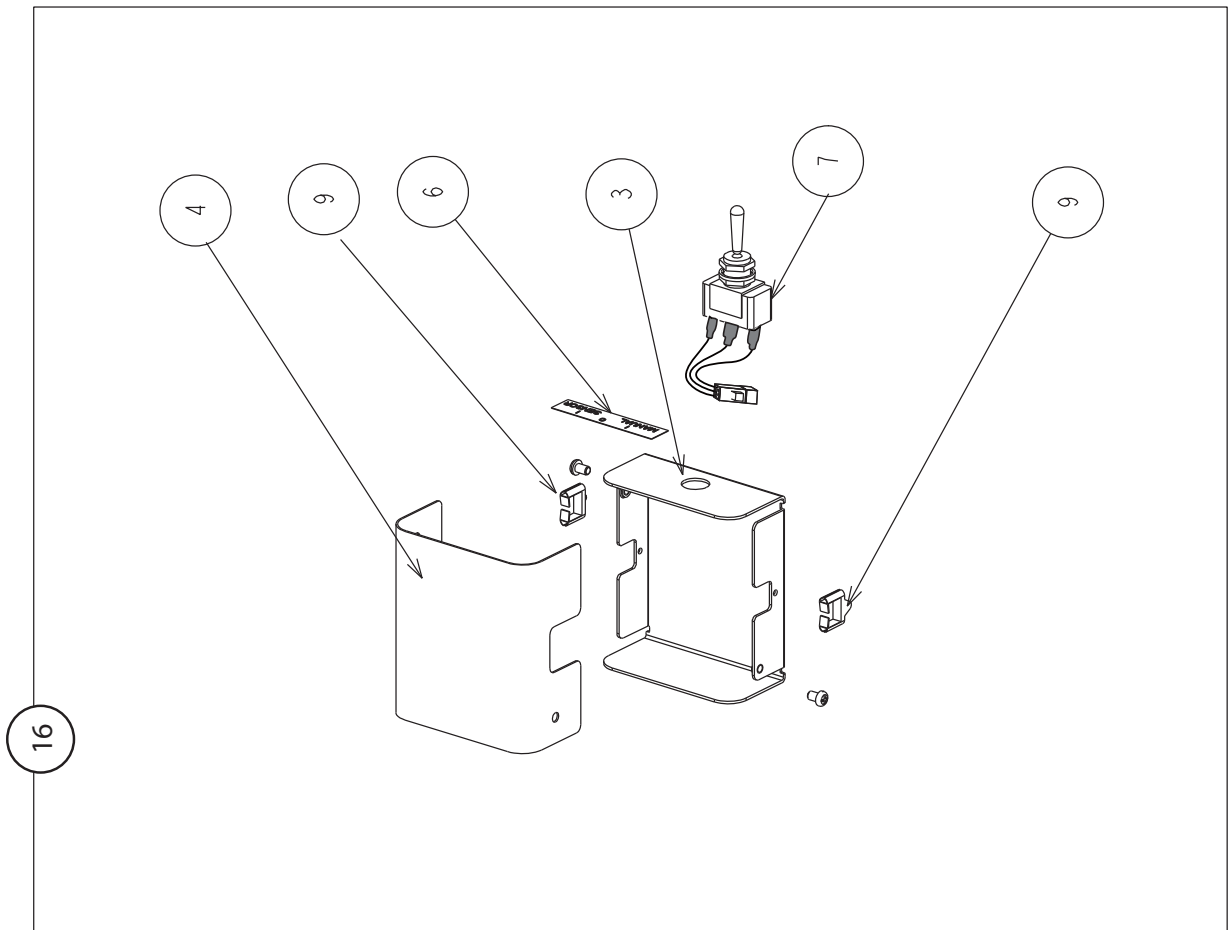
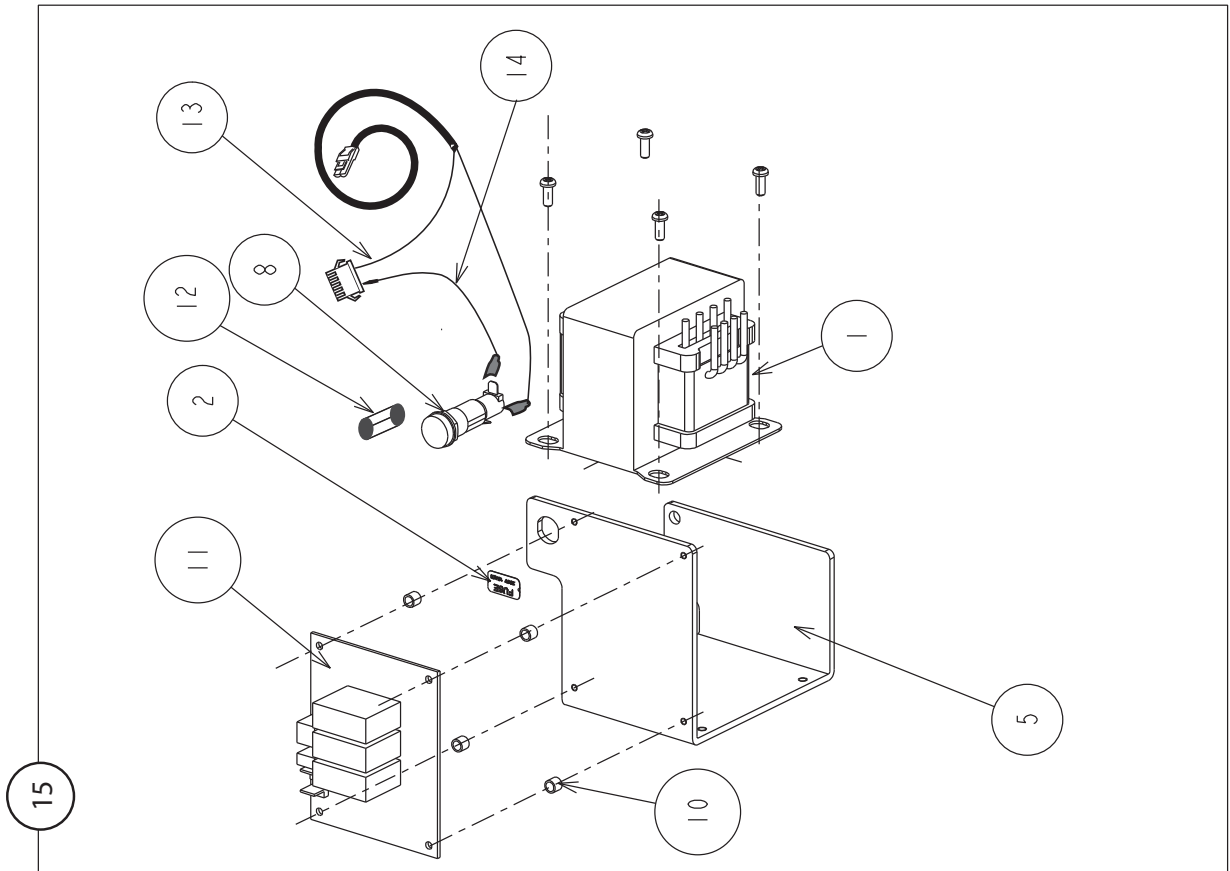
- Not all of the parts indicated in these lists are available by itself. Some of the parts can only be supplied as an assembled unit with other parts.
- Parts design, description and parts numbers are subject to change without notice.
- Not all of the parts are available in stock of Takara Belmont USA Inc. Some of the parts need to be arranged at receipt of your firm purchase order.



TABLE OF CONTENTS

1. AL-820 Light Switch Box & Transformer section
2. AL-820 Arm Section
3. AL-820 Head Section

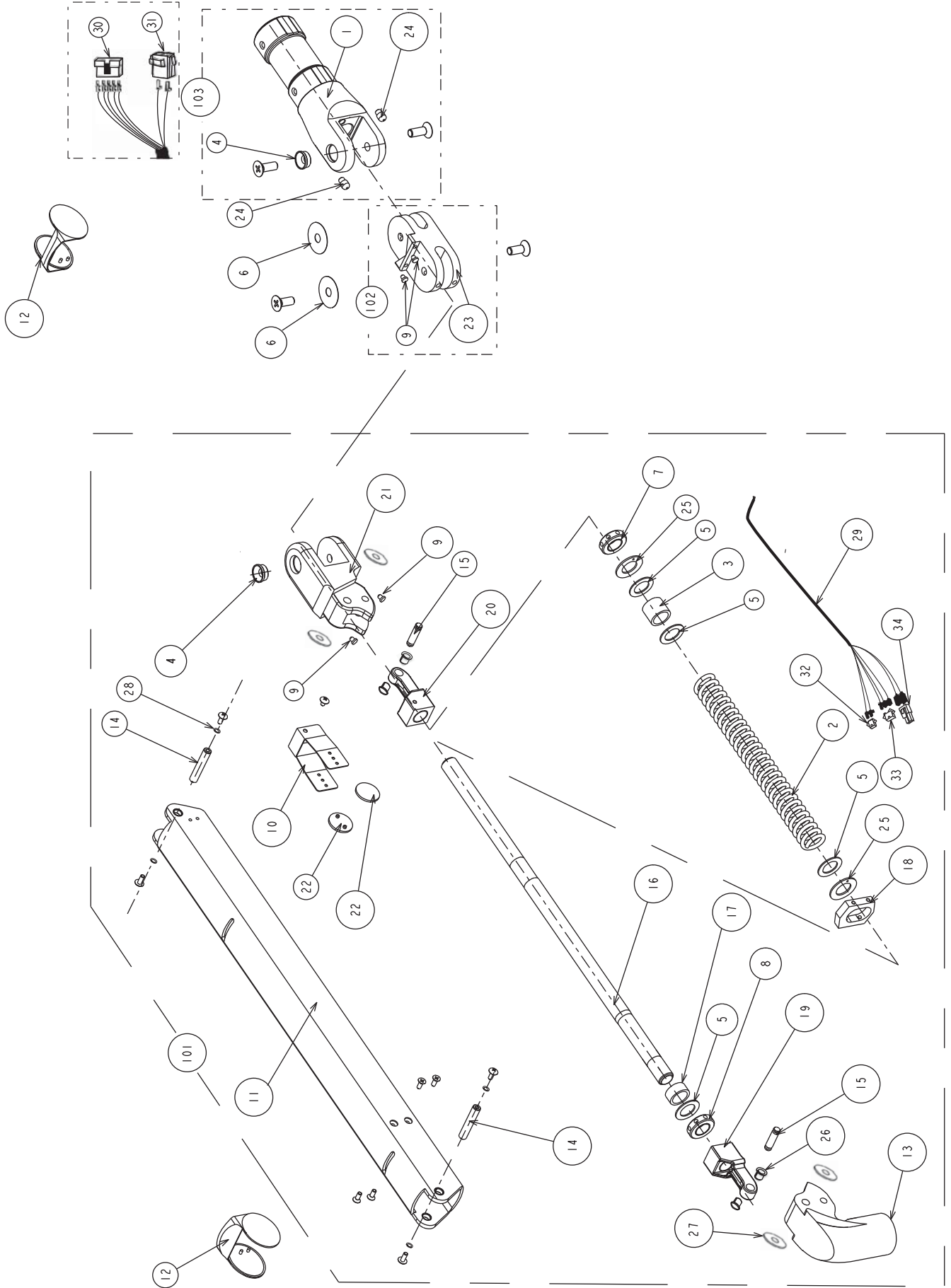
1. AL-820 Light Switch Box & Transformer section



1. AL-820 Light Switch Box & Transformer section

No.	Item No.	Description	Qty
---	AL-820		
1	AGYB00A0	Transformer DLT-1N2	1
2	CAEN82A0	Fuse label (1.5A)	1
3	CAGP86A1	Switch box frame	1
4	CAGP87A1	Switch box cover	1
5	CAGP88A0	Transformer bracket (820)	1
6	CAJC01A0	Manual/Sensor switch label	1
7	1G00X3A0	Toggle switch S303 Pars Ass'y	1
8	AEFR92A0	Fuse holder MF-530	1
9	CEGN75A0	Edge protector EDS-1208U	2
10	CETN68A0	Spacer 3 x 6 x 7	4
11	CGGN65A0	Control PCB (Quolis)	1
12	CEEN22A0	Fuse 250V 1.5A	1
13	CAGP74A0	Wire harness for AC power	1
14	CAGP75A0	Lead wire (L) Brown, Fuse-Transformer	1
15	AXYB01A0	Transformer & PCB Ass'y	1
16	1P004QA0	Switch box complet Ass'y	1

2. AL-820 Arm Section (Item Number 1G00Y0A)



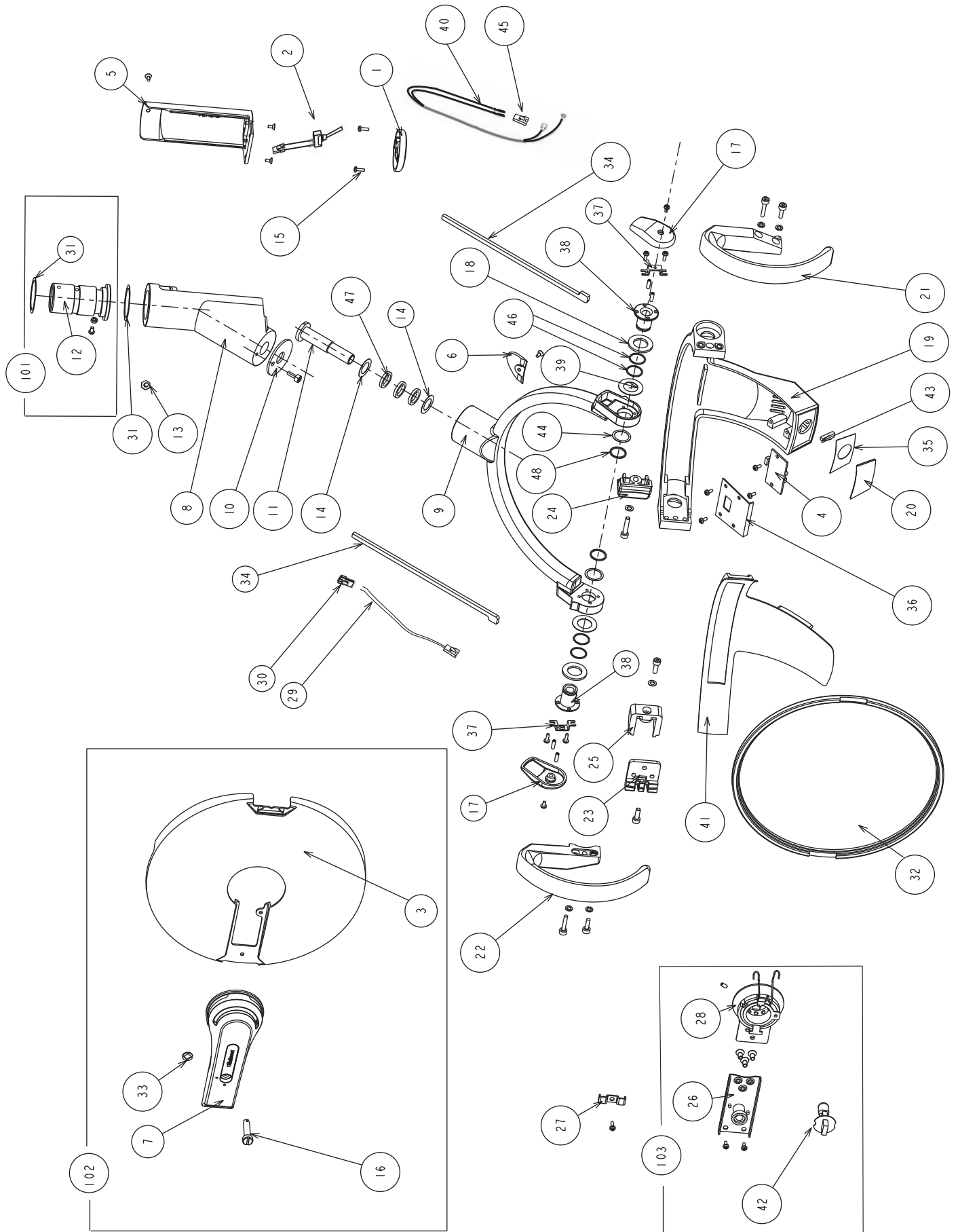
2. AL-820 Arm Section (Item Number 1G00Y0A)

No.	Item No.	Description	Qty
---	1G00Y0A0	Balance arm ass'y (AL-820) with arm joint	1
101	1G00Y1A0	Balance arm ass'y (AL-820) without arm joint	1
2	CAHC93A0	(Not Available by itself)	1
3	CARA08A0	(Not Available by itself)	1
4	CAJA05A0	(Not Available by itself)	1
5	CAMF11A0	(Not Available by itself)	4
7	CAMJ31A0	(Not Available by itself)	1
8	CAMJ32A0	(Not Available by itself)	1
9	CAMP65A0	(Not Available by itself)	2
10	CAQO30A0	(Not Available by itself)	1
11	CARA00A1	(Not Available by itself)	1
13	CARA02A1	(Not Available by itself)	1
14	CARA03B0	(Not Available by itself)	2
15	CARA04B0	(Not Available by itself)	2
16	CARA07B0	(Not Available by itself)	1
17	CARA09B0	(Not Available by itself)	1
18	CARA10C0	(Not Available by itself)	1
19	CARA13A1	(Not Available by itself)	1
20	CARA14A1	(Not Available by itself)	1
21	CARA16A1	(Not Available by itself)	1
22	CARN03B0	(Not Available by itself)	2
25	CERA01A0	(Not Available by itself)	2
26	CERA02C0	(Not Available by itself)	4
27	CAHC27A0	(Not Available by itself)	4
28	CANF62A0	(Not Available by itself)	4
29	CAGP78A0	(Not Available by itself)	1
32	CEMA53A0	(Not Available by itself)	1
33	CEGN07A0	(Not Available by itself)	1
34	CECN33A0	(Not Available by itself)	1
102	CGGN68A0	Second Arm Joint Ass'y (AL-820)	1
9	CAMP65A0	Stopper Nylon	2
23	CATN39A1	Second Arm Joint (AL-820)	1
103	1G00X2A0	First Arm Joint Ass'y (AL-820)	1
1	CAGP71A1	First Arm Joint (AL-820)	1
4	CAJA05A0	Bushing for Arm Joint	1
24	CATP10A0	Stopper RL L:7.5 Nylon	2
6	CAMF12A0	Washer, Gunmetal, 32 x 8.5 x 0.3	2
12	CARA01A0	Balance arm joint cover	2
30	CEOA18A0	Receptacle housing 5P	1
31	CATB01A0	Receptacle housing 2P	1

3. AL-820 Head Section (Item Nu. 1G00X4A0)

36	CAHC84A0	Heat protective plate	1
37	CAHC87A0	Yoke cap bracket	2
38	CAHC88A0	Yoke cap bracket rotatio axis	2
39	CAHC89A0	Washer 24 x 14.2 x 0.5	2
40	CAGP81A0	Lead wire for light bulb	1
41	CAIC03A0	Reflector packing	1
43	CAIC10A0	Separator	1
44	CANF66A0	Polyamide washer 18 x 14.2 x 0.25	2
45	CATB01A0	Receptacle housing 2P	1
46	CEIA10A0	Wave washer WW-14	4
47	CENW08A0	FE Wave washwer WW-12	3
48	CENX93A0	Inverted E-Ring ISTW-14	2

3. AL-820 Head Section (Item Nu. 1G00X4A0)



3. AL-820 Head Section (Item Nu. 1G00X4A0)

No.	Item No.	Description	Qty
	1G00X4A0	Light head ass'y of AL-820	1
101	CGGN66A0	Yoke rotation axis with polyamide washers	1
12	CAGP68A0	Yoke rotation axis with	1
31	CAHC53A0	Polyamide washwer 35 x 29 x 0.25	1
102	CGGN75A0	Front shield ass'y	1
3	CADR76A0	Front shield	1
7	1G00X5A0	Front shield mislaneous parts	1
16	CAGP84A0	Front shield fixing fastener	1
33	CAHC76A0	Washer for fixing fastener.	1
103	CGQO12A0	Light bulb holder ass'y	1
26	CAHC47B0	Light bulb holder	1
28	1G00X6A0	Light valves holder miscellaneous parts	1
42	CAIC07A0	Halogen Lamp JA 24V 60W	1
1	CAGP60A1	Intensity switch mounting plate	1
2	1G00X8A0	Intensity switch ass'y	1
4	CGGN64A0	Sensor PCB	1
5	CAGP59A1	Yoke lower cover	1
6	CAGP61A1	Yoke front cover	1
8	1G00X9A0	Yoke (First)	1
9	CAGP65A1	Yoke (Second)	1
10	CAGP66A0	Third rotation axis washer	1
11	CAGP67A0	Third rotation axis	1
13	CAGP69A0	Yoke rotation stopper screw	1
14	CAGP70A0	Polyamide washer	2
15	CECN46A0	M3 x 8mm Panhead screws	2
17	CAGP92A0	Yoke cap	2
18	CAHC35A0	Washwer 24 x 14.2 x 2	2
18	CAHC36C1	Bracket T	1
18	CAHC38A0	Touchless switch cover	1
18	CAGP90A0	Handle (R) CN-80	1
18	CAGP91A0	Hanlde (L) CN-80	1
18	CAHC41B1	Reflector holder bracket CN-80	1
18	CAGP93A0	Reflector holder (R)	1
18	CAGP94A0	Reflector holder (L)	1
27	CAHC48C0	Yoke rear cover	1
29	CAGP80A0	Wire harness for sensor (Quolis light)	1
30	CETN58A0	SM Connector 3P female SMR-03V-B	1
31	CAHC53A0	Polyamide washwer 35 x 29 x 0.25	1
32	CAHC60A0	Reflector	1
34	CAHC77A0	Reflector support pad CR x 2	2
35	CAHC78B0	Double sided tape for touchles switch	1

NOTE

Empty rounded rectangular box for notes.

BELMONT EQUIPMENT, Division of Takara Belmont USA, Inc.

101 Belmont Drive Somerset, New Jersey 08873 U.S.A. TEL.:(732) 469-5000 / (800) 223-1192 Fax.:(732)526-6322 / (800) 280-7504

TAKARA CO, CANADA LTD.

2076 S. Sheridan Way, Mississauga, Ont., L5J2M4, Can. TEL.:(905) 822-2755 Fax.:(905)822-6203

