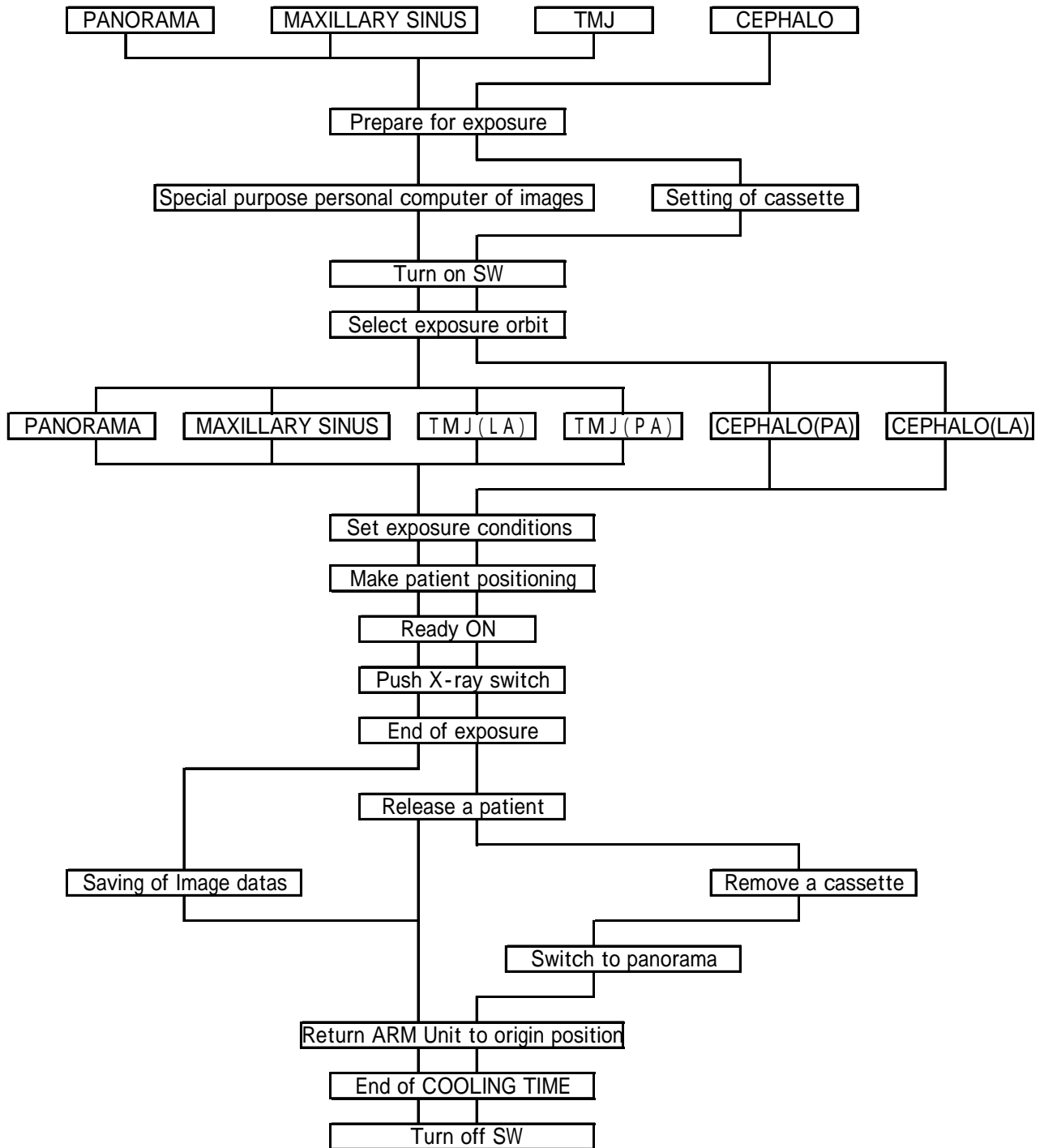


Digital Radiograph



6 . Image Display Problem with the CCD Unit.

In case that CCD Sensor has a problem
Turn the power of the PC off
Turn the power of the Panoramic radiograph off.
Turn the power of the Panoramic radiograph on again
Turn the power of the PC on again and restart the PC
Check the condition of LED (green color)
If the green LED is not blinking, check the connection between the PC and the Sensor unit
In case that LED is blinking, but not turned on, check the connection between the PC and the Sensor unit
When there is no problem in the connection of the LAN cable, it could be a malfunction of the sensor unit, please contact a service engineer of your dealer

7 . Image Display Problem with the CCD Unit.

In case that PC or image processing software has a problem
Turn the power of the PC off
Turn the power of the Panoramic radiograph off.
Turn the power of the Panoramic radiograph on again
Turn the power of the PC on again and restart the PC
Check that LED of the sensor unit is changed from blinking to stable
Check the connection of the LAN cable
If above steps don't solve the problem, please contact your PC manufacturer or image processing software vender