

## BDS Delivery Systems

## ■ BDS Swing-Mounted Delivery

Doctor's L-R Delivery only, or Doctor's L-R Delivery with Bel-Halo LED, Clesta LED or Clesta Halogen Lights

BDS swing-mounted delivery systems meet the needs of practices that require flexibility to reposition operator set-up from the right side of the chair to the left side within seconds.

### BDS2575

Swing-Mounted Delivery System with Assistant's Vac Pac option



FLEXIBILITY

DURABILITY

ERGONOMICS

RELIABILITY



### BDS2575

Swing-Mounted Delivery System with Assistant's Vac Pac, Monitor Swing Arm and Flat Panel Monitor Mount Options\*



### BDS2573

Swing-Mounted Delivery System with Swing-Mounted Clesta LED Dental Light. Shown with Assistant's Vac Pac and additional HVE Options



\*Monitor Not Available

## ■ BDS Over the Patient Delivery

With or Without Cuspidor

X-Calibur over-the-patient delivery systems are available in 2 separate configurations to meet the needs of traditional dentistry and beyond.



### BDS2500

Delivery System with Cuspidor & Telescoping Assistant Instrument Arm. Shown with optional Bel-Halo LED Dental Light



### BDS2510

Delivery System with Telescoping Assistant Instrument Arm; no Cuspidor. Shown with straight light post and Clesta Halogen light options.

## ■ BDS Cabinet-Mounted Delivery



### BDS2555

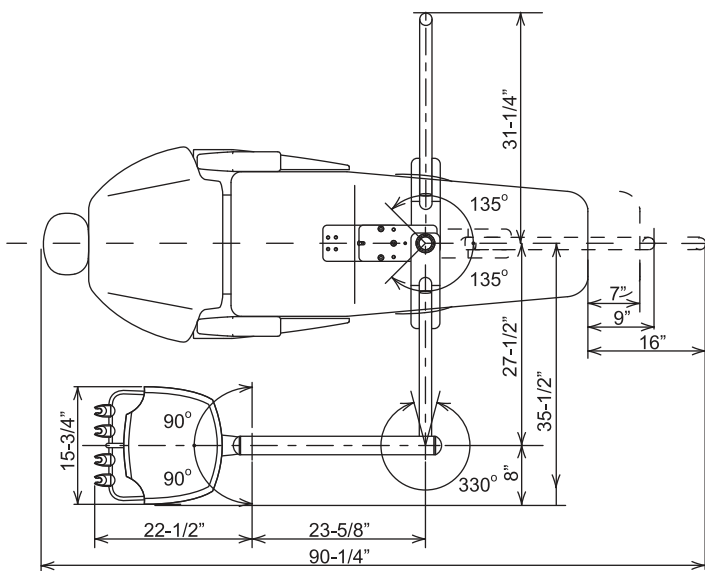
Cabinet Mounted Side Delivery System



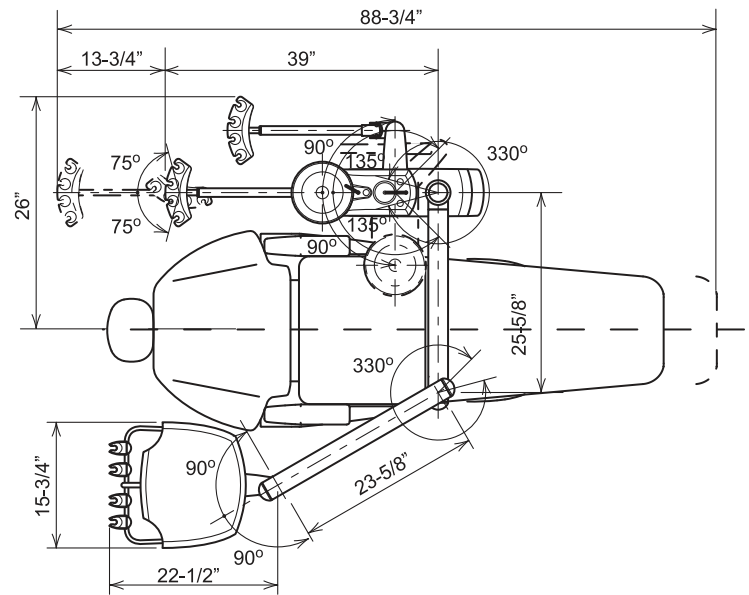
### BDS2571

Rear Cabinet Mounted Assistant's Instruments

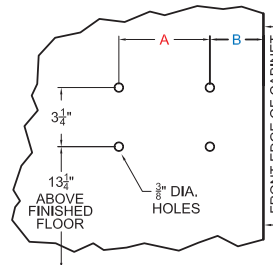
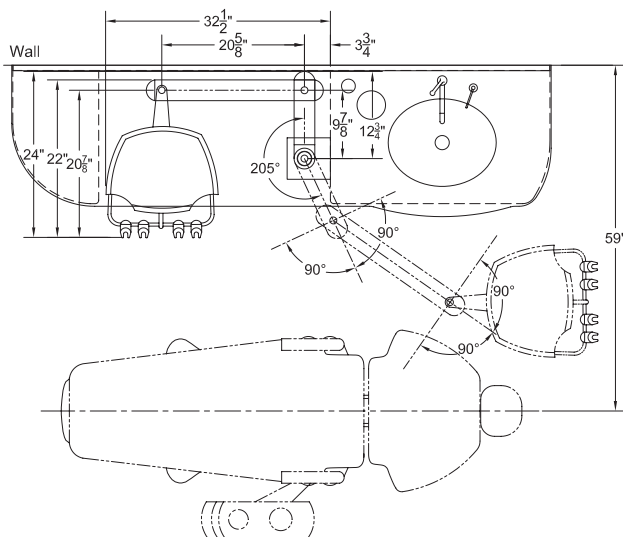
## Swing-Mounted Delivery on B-50N Chair



## Over-the-patient Delivery on B-50N Chair



## Cabinet Mounted Side Delivery



DIMENSION CHART		
	A	B
D1	5"	4"
E1	4"	1 3/4"
D4RH	5"	4 7/8"
E4	5"	4 7/8"
ECO 1	5"	3"

Belmont Equipment  
101 Belmont Drive  
Somerset, NJ 08873  
(800) 223-1192  
[www.belmontequip.com](http://www.belmontequip.com)

**Belmont**  
Delivering Value in Quality

@BelmontEquipUS

