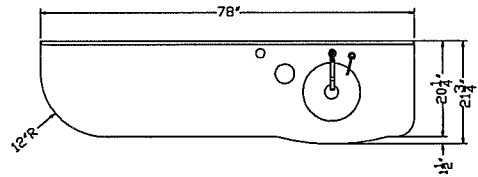
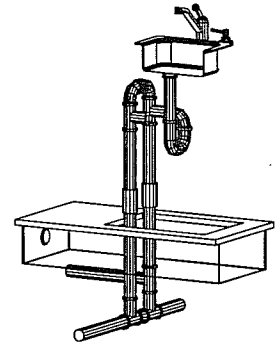
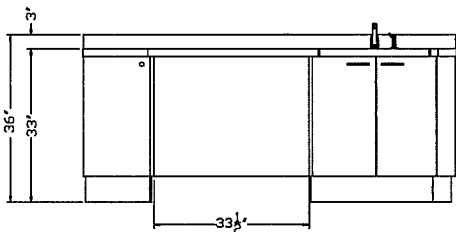


D-1 FLOOR TEMPLATE



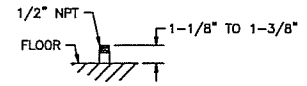
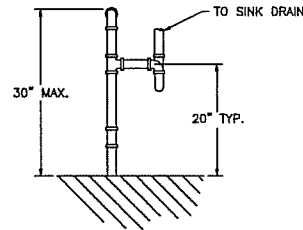
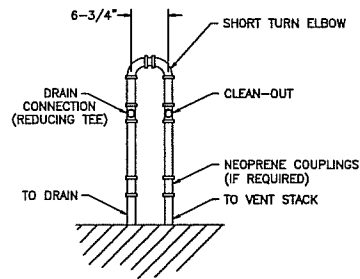
TOP VIEW



FRONT VIEW



RIGHT SIDE VIEW



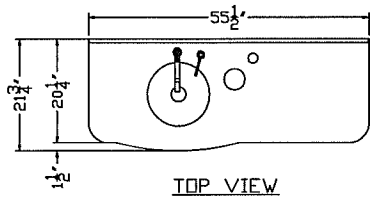
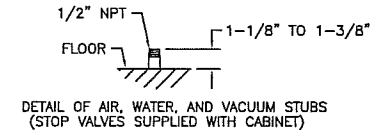
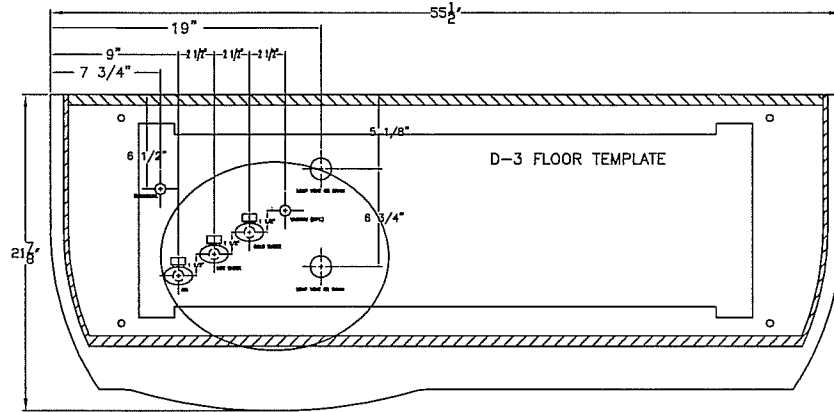
DETAIL OF AIR, WATER, AND VACUUM STUBS (STOP VALVES SUPPLIED WITH CABINET)

NOTE: PLAN AND ELEVATION VIEWS ARE FOR REFERENCE ONLY. SEE INSTALLATION MANUAL FOR DETAILED INFORMATION.

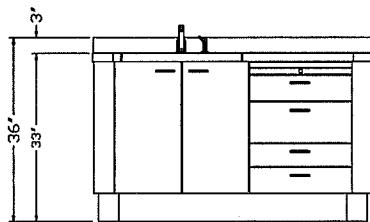
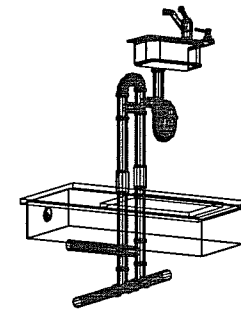
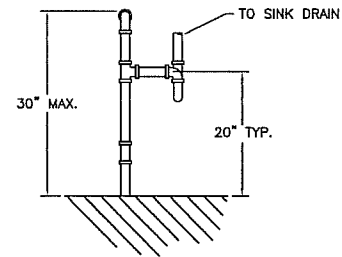
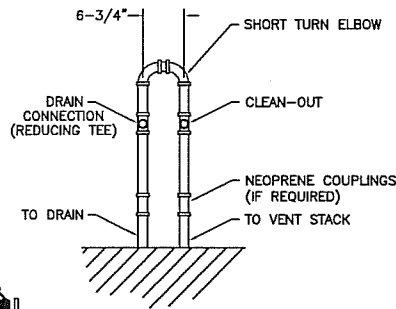
PLUMBING NOTES
 1-1/2" DRAIN SHOWN; SIZE MAY VARY ACCORDING TO LOCAL CODE.
 IT IS THE RESPONSIBILITY OF THE INSTALLER TO CONFIRM THAT THE INSTALLATION MEETS LOCAL CODE WITH REGARD TO MATERIALS, VENTING, ETC.

KOKEN MANUFACTURING ASSUMES NO RESPONSIBILITY FOR MEASUREMENTS SUBMITTED TO THEM BY OTHERS - NOR FOR THE CORRECT LOCATION OF ELECTRICAL SOURCES OR CORRECT AMPERAGE REQUIRED. PLUMBING MEASUREMENTS ON THIS DRAWING ARE FOR "ROUGHING IN" ONLY. THESE ITEMS, AS WELL AS LOCAL CODE REGULATIONS, SHOULD BE CHECKED WITH THE ARCHITECT OR PROPER CONTRACTOR BEFORE WORK IS STARTED.

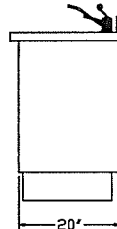
REV.	DATE	DESCRIPTION	BY
KOKEN MANUFACTURING CO., INC. ST. LOUIS, MISSOURI			
MATERIAL:		TITLE	
FINISH:		D-1 FLOOR TEMPLATE	
DRAWN BY	L. Litchfield	SCALE	1=1
CHK'D.		DATE	5/27/2003
			DRAWING NO. P11343



TOP VIEW



FRONT VIEW



RIGHT SIDE VIEW

NOTE: PLAN AND ELEVATION VIEWS ARE FOR REFERENCE ONLY. SEE INSTALLATION MANUAL FOR DETAILED INFORMATION.

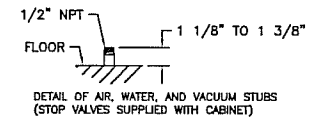
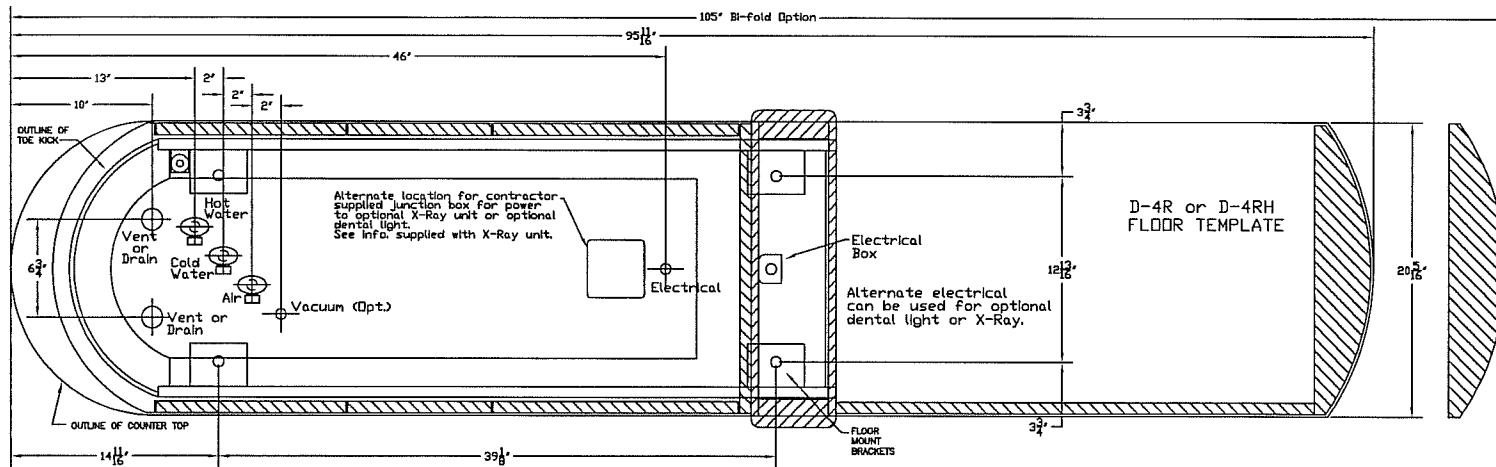
PLUMBING NOTES

1-1/2" DRAIN SHOWN: SIZE MAY VARY ACCORDING TO LOCAL CODE.

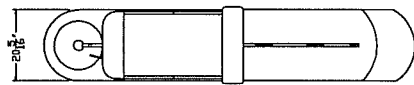
IT IS THE RESPONSIBILITY OF THE INSTALLER TO CONFIRM THAT THE INSTALLATION MEETS LOCAL CODE WITH REGARD TO MATERIALS, VENTING, ETC.

KOKEN MANUFACTURING ASSUMES NO RESPONSIBILITY FOR MEASUREMENTS SUBMITTED TO THEM BY OTHERS - NOR FOR THE CORRECT LOCATION OF ELECTRICAL SOURCES OR CORRECT AMPERAGE REQUIRED. PLUMBING MEASUREMENTS ON THIS DRAWING ARE FOR "ROUGHING IN" ONLY. THESE ITEMS, AS WELL AS LOCAL CODE REGULATIONS, SHOULD BE CHECKED WITH THE ARCHITECT OR PROPER CONTRACTOR BEFORE WORK IS STARTED.

REV.	DATE	DESCRIPTION	BY
KOKEN MANUFACTURING CO., INC. ST. LOUIS, MISSOURI			
MATERIAL:		TITLE	
FINISH:		D-3 FLOOR TEMPLATE	
DRAWN BY	L. Litchfield	SCALE	1=1
CHK'D.		DATE	5/27/2003
			DRAWING NO. P11344

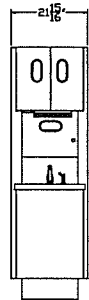
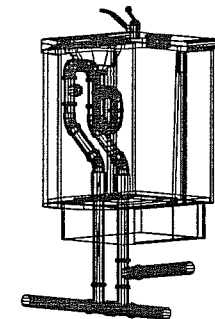
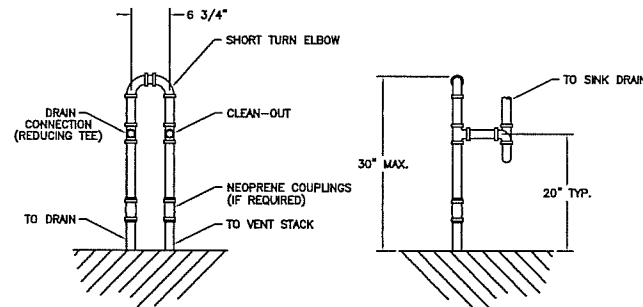


NOTE: PLAN AND ELEVATION VIEWS ARE FOR REFERENCE ONLY. SEE INSTALLATION MANUAL FOR DETAILED INFORMATION.

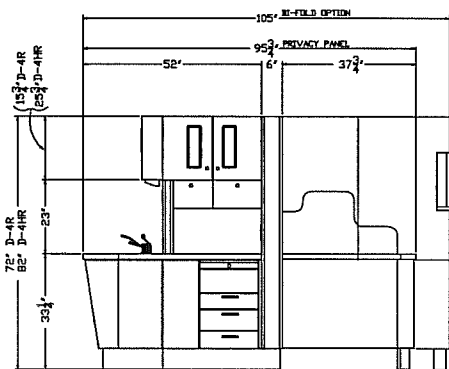


TOP VIEW

BI-FOLD OPTION OUTLINE



LEFT SIDE VIEW



FRONT VIEW

BI-FOLD OPTION OUTLINE

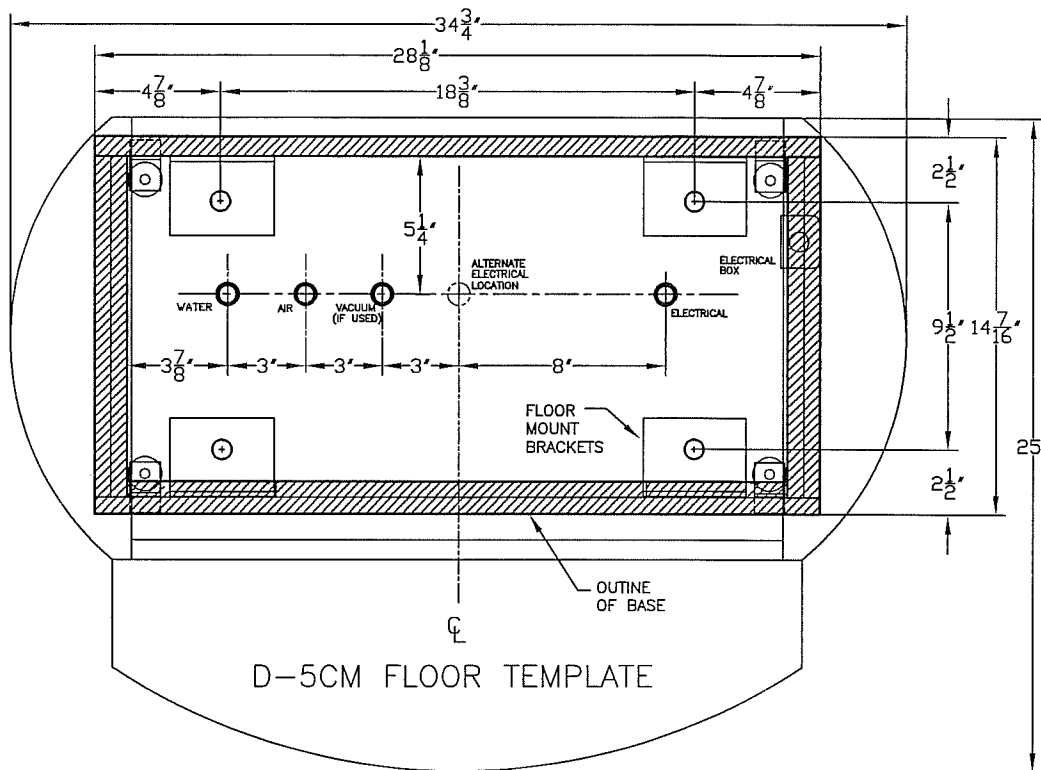
PLUMBING NOTES

1-1/2" DRAIN SHOWN; SIZE MAY VARY ACCORDING TO LOCAL CODE.

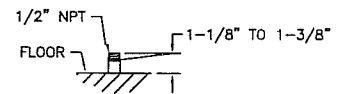
IT IS THE RESPONSIBILITY OF THE INSTALLER TO CONFIRM THAT THE INSTALLATION MEETS LOCAL CODE WITH REGARD TO MATERIALS, VENTING, ETC.

KOKEN MANUFACTURING ASSUMES NO RESPONSIBILITY FOR MEASUREMENTS SUBMITTED TO THEM BY OTHERS - NOR FOR THE CORRECT LOCATION OF ELECTRICAL SOURCES OR CORRECT AMPERAGE REQUIRED. PLUMBING MEASUREMENTS ON THIS DRAWING ARE FOR "ROUGHING IN" ONLY. THESE ITEMS, AS WELL AS LOCAL CODE REGULATIONS, SHOULD BE CHECKED WITH THE ARCHITECT OR PROPER CONTRACTOR BEFORE WORK IS STARTED.

REV.	DATE	DESCRIPTION	BY
KOKEN MANUFACTURING CO., INC. ST. LOUIS, MISSOURI			
MATERIAL:		TITLE	
FINISH:		D-4R & D-4RH FLOOR TEMPLATE	
DRAWN BY CW	SCALE 1=1	DATE 7/11/2003	DRAWING NO. P11345

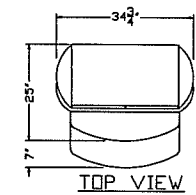


D-5CM FLOOR TEMPLATE

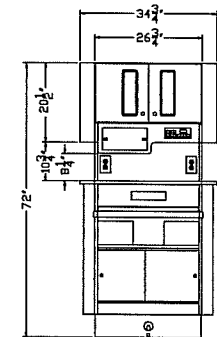


DETAIL OF AIR, WATER, AND VACUUM STUBS
(STOP VALVES SUPPLIED WITH CABINET)

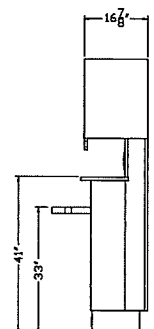
NOTE: PLAN AND ELEVATION VIEWS ARE FOR REFERENCE ONLY. SEE INSTALLATION MANUAL FOR DETAILED INFORMATION.



TOP VIEW



FRONT VIEW

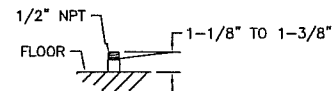
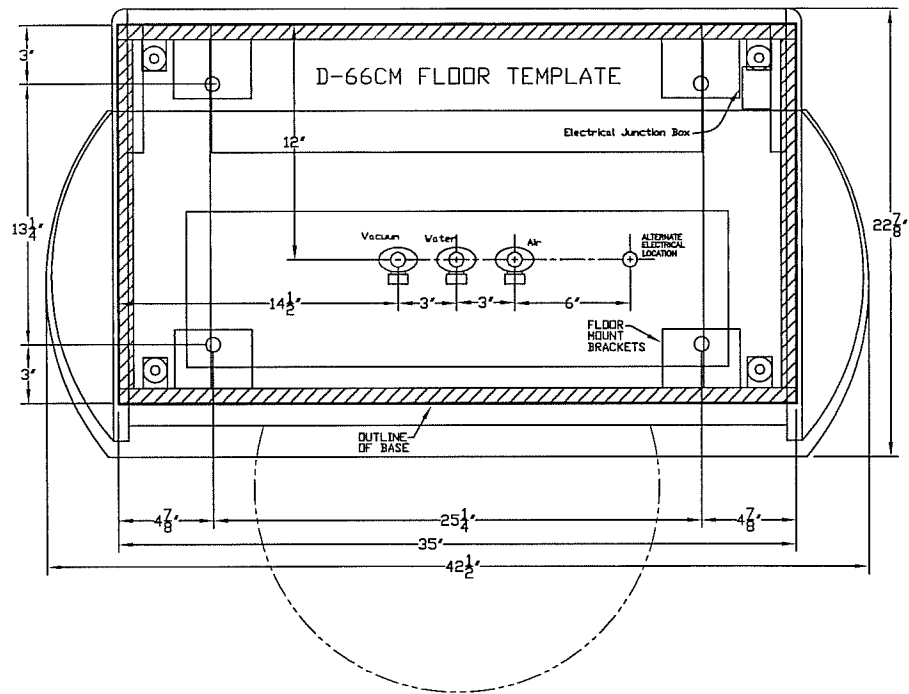


RIGHT SIDE VIEW

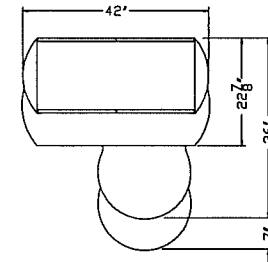
IMPORTANT NOTE:
PLUMBING LOCATIONS SHOWN ARE TYPICAL FOR DELIVERY SYSTEMS CURRENTLY AVAILABLE. THE PLUMBING HARDWARE IS NOT SUPPLIED WITH THE CABINETRY; IT IS NOT REQUIRED UNLESS A DELIVERY SYSTEM IS BEING INSTALLED. WE RECOMMEND YOU REVIEW THE TEMPLATE SUPPLIED BY THE DELIVERY SYSTEM MANUFACTURER WHEN PLANNING THIS PLUMBING LAYOUT.

NOTE: IF A NITROUS ANALGESIA SYSTEM IS TO BE INSTALLED, LOCATE THE PIPING IN THE AREA INDICATED. BECAUSE OF THE DIFFERENCES IN SYSTEM HARDWARE, EXACT LOCATIONS MUST BE DETERMINED BY INSTALLER.

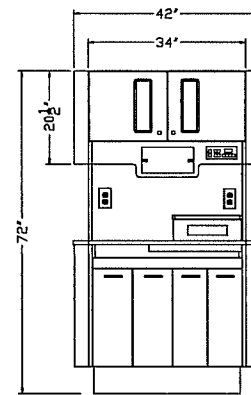
KOKEN MANUFACTURING ASSUMES NO RESPONSIBILITY FOR MEASUREMENTS SUBMITTED TO THEM BY OTHERS - NOR FOR THE CORRECT LOCATION OF ELECTRICAL SOURCES OR CORRECT AMPERAGE REQUIRED. PLUMBING MEASUREMENTS ON THIS DRAWING ARE FOR "ROUGHING IN" ONLY. THESE ITEMS, AS WELL AS LOCAL CODE REGULATIONS, SHOULD BE CHECKED WITH THE ARCHITECT OR PROPER CONTRACTOR BEFORE WORK IS STARTED.		KOKEN MANUFACTURING CO., INC. ST. LOUIS, MISSOURI	
REV.	DATE	DESCRIPTION	BY
MATERIAL:		TITLE: D-5CM FLOOR TEMPLATE	
FINISH:		SCALE: 1=1	DRAWING NO.:
BY: L. Litchfield		DATE: 5/23/2003	P11346



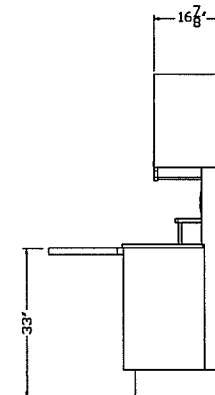
DETAIL OF AIR, WATER, AND VACUUM STUBS
(STOP VALVES SUPPLIED WITH CABINET)



TOP VIEW



FRONT VIEW



RIGHT SIDE VIEW

NOTE: PLAN AND ELEVATION VIEWS ARE FOR REFERENCE ONLY. SEE INSTALLATION MANUAL FOR DETAILED INFORMATION.

IMPORTANT NOTE:
PLUMBING LOCATIONS SHOWN ARE TYPICAL FOR DELIVERY SYSTEMS CURRENTLY AVAILABLE. THE PLUMBING HARDWARE IS NOT SUPPLIED WITH THE CABINETRY; IT IS NOT REQUIRED UNLESS A DELIVERY SYSTEM IS BEING INSTALLED. WE RECOMMEND YOU REVIEW THE TEMPLATE SUPPLIED BY THE DELIVERY SYSTEM MANUFACTURER WHEN PLANNING THIS PLUMBING LAYOUT.

NOTE: IF A NITROUS ANALGESIA SYSTEM IS TO BE INSTALLED, LOCATE THE PIPING IN THE AREA INDICATED. BECAUSE OF THE DIFFERENCES IN SYSTEM HARDWARE, EXACT LOCATIONS MUST BE DETERMINED BY INSTALLER.

KOKEN MANUFACTURING ASSUMES NO RESPONSIBILITY FOR MEASUREMENTS SUBMITTED TO THEM BY OTHERS. WORK FOR THE CORRECT LOCATION OF ELECTRICAL SOURCES OR CORRECT AMPERAGE REQUIRED. PLUMBING MEASUREMENTS ON THIS DRAWING ARE FOR "ROUGHING IN" ONLY. THESE ITEMS, AS WELL AS LOCAL CODE REGULATIONS, SHOULD BE CHECKED WITH THE ARCHITECT OR PROPER CONTRACTOR BEFORE WORK IS STARTED.

REV.	DATE	DESCRIPTION	BY
KOKEN MANUFACTURING CO., INC. ST. LOUIS, MISSOURI			
MATERIAL:		TITLE: D-66CM FLOOR TEMPLATE	
FINISH:		SCALE: 1=1	DRAWING NO. P11347
DESIGNED BY: L. Litchfield	CHECKED BY:	DATE: 5/23/2003	