

**PRE-INSTALLATION TEMPLATE
FOR
PASS-THROUGH MOUNTING PLATE**

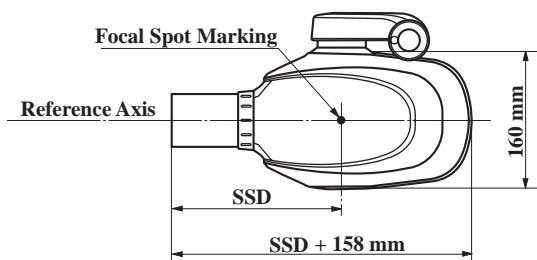
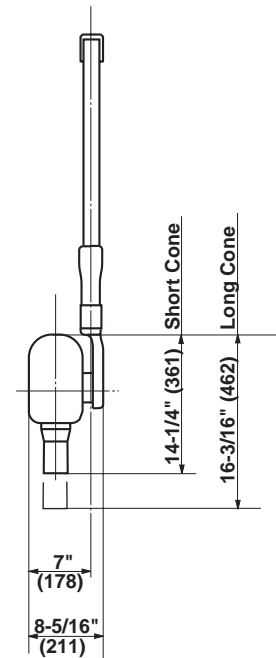
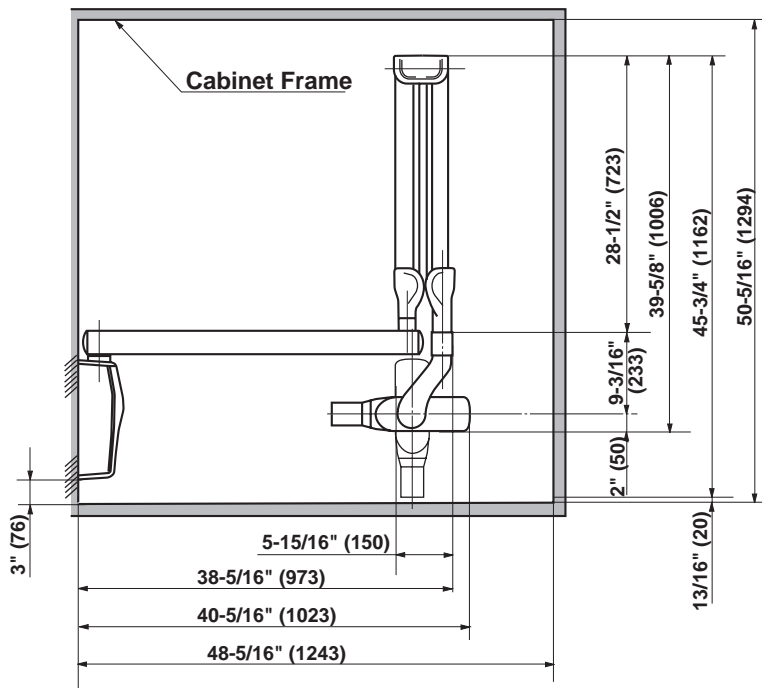
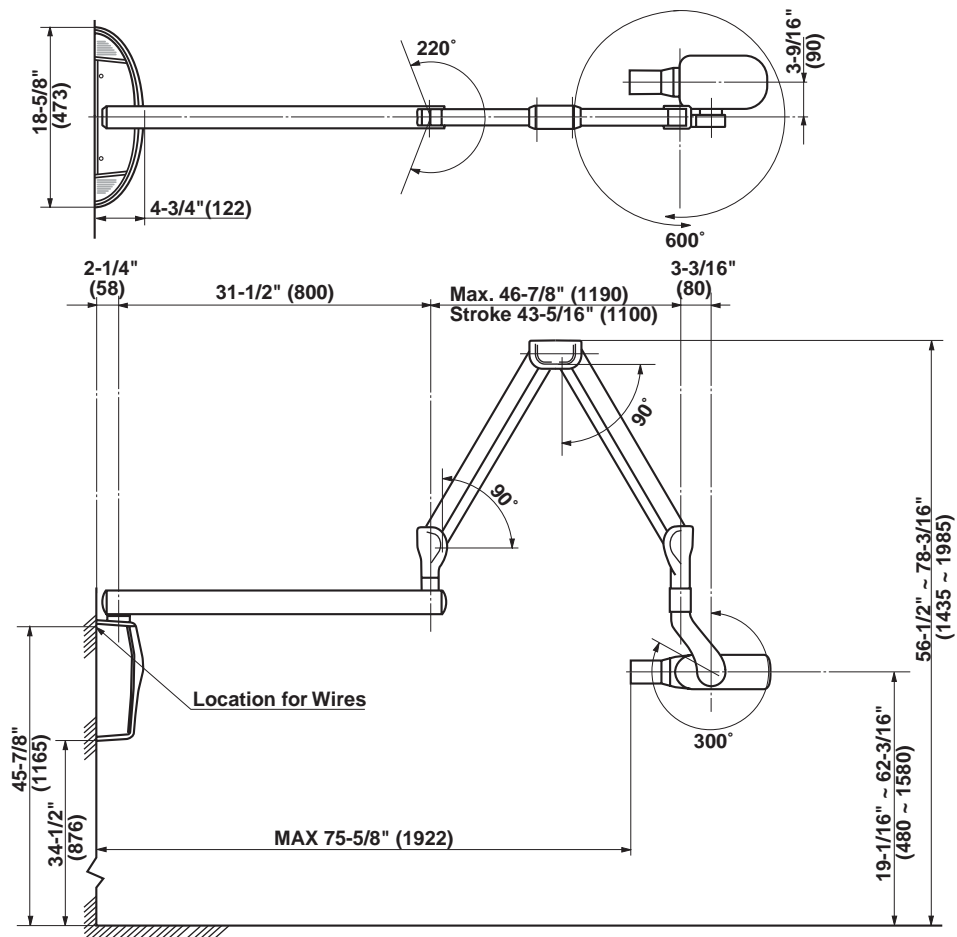
PHOT-X II



BELMONT EQUIPMENT

A DIVISION OF TAKARA BELMONT USA, INC

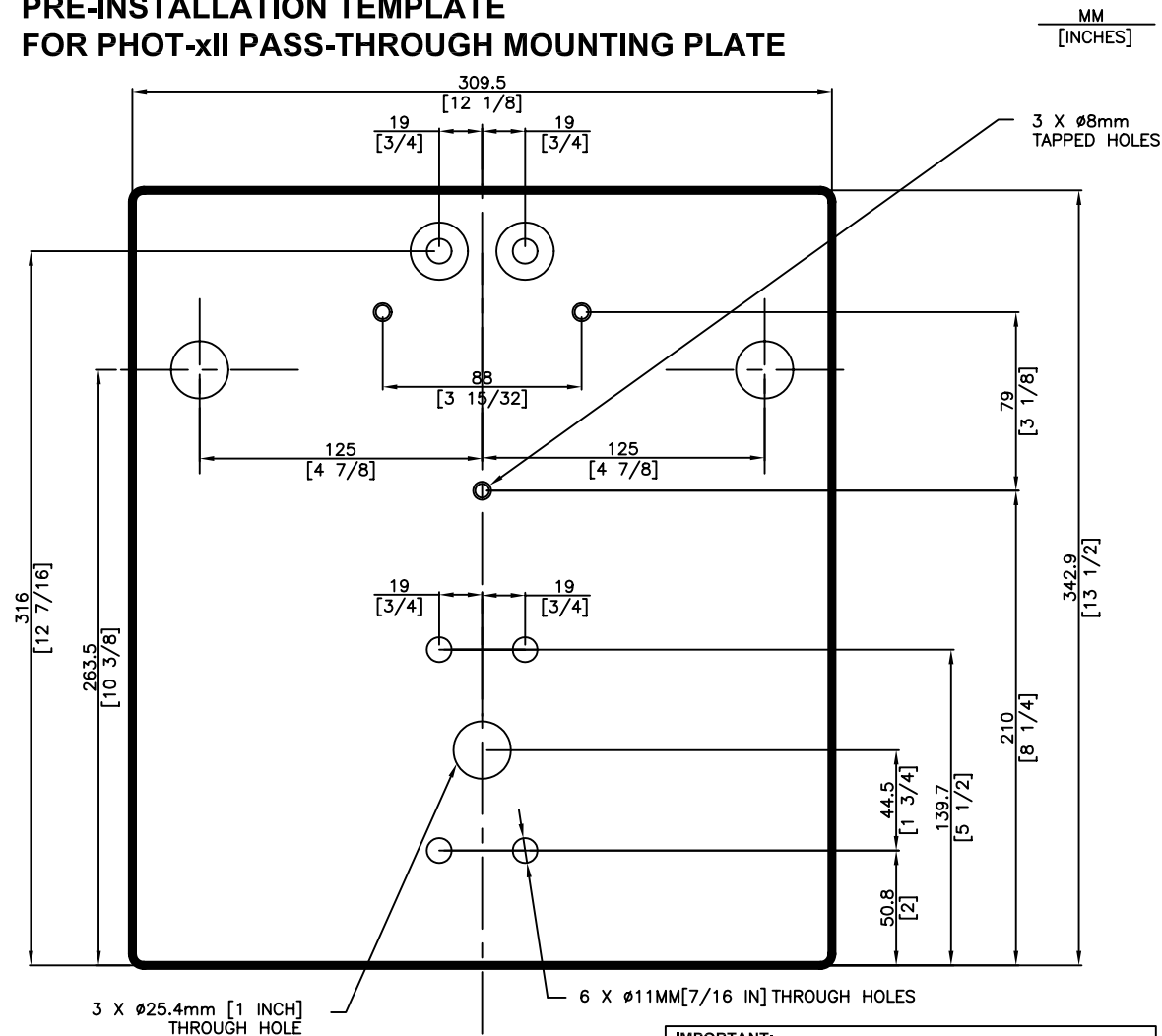
101 Belmont Drive, Somerset, NJ 08873
(732) 469 - 5000
Toll Free (800) 223 - 1192
Toll Free Fax (800) 280 -7504



SSD (Source to Skin Distance) :

- a. Regular cone-----8 inches (203 mm)
- b. Long cone-----12 inches (305mm)
- c. Rectangular cone-----8 inches (203 mm)

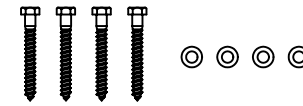
PRE-INSTALLATION TEMPLATE FOR PHOT-xII PASS-THROUGH MOUNTING PLATE



IMPORTANT:
For all types of wall construction, mounting hardware must withstand a 100lb(45kg) shear load and a 450 lb(202.5kg) withdrawal force at each 5/16" x 3" lag screw and each M8x20mm bolt.

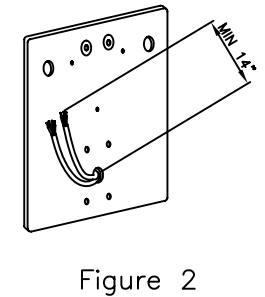
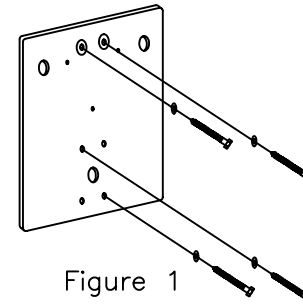
Parts List

Pass-Through Mounting Plate (1 each)
5/16" X 3" Lag Screws (4 each)
Steel Washer (4 each)



Installation

1. Locate the bottom edge of the pass-through plate 34.5" above the finished floor, along two 2x4 vertical studs that have been joined together.
2. Mark locations for the ϕ 7/16" Pre-drilled mounting holes as follows:
 - a) Mark the two mounting holes at the top of the plate.
 - b) Select and mark two of the four mounting holes provided at the bottom of the plate. It is recommended that one hole is located at 2" from the bottom of the Pass-Through Plate and that the second hole is located diagonally, at 5-1/2" from the bottom of the Pass-Through plate.



- c) Drill pilot holes approximately 2" deep for the lag screws, using a ϕ 3/16"(MAX) drill.
3. Select and mark the ϕ 1" pre-drilled holes located on the mounting plate center line for routing the power supply. (Note: Extend wire leads a minimum of 14" beyond plate surface.)
 - a) Drill a ϕ 1" hole through the wall mounting surface.
 4. Attach Pass-Through Mounting Plate to wall mounting surface with the four 5/16"x3" Lag screws and washers provided.
 5. Using the three M8x20mm bolts provided with the PHOT-xII, attach the x-ray arm mounting bracket to the top of the Pass-Through Mounting Plate. Install x-ray system, following installation instructions provided with the PHOT-xII.

**PRE-INSTALLATION TEMPLATE
FOR PHOT-xII PASS-THROUGH MOUNTING PLATE**

MM
[INCHES]

