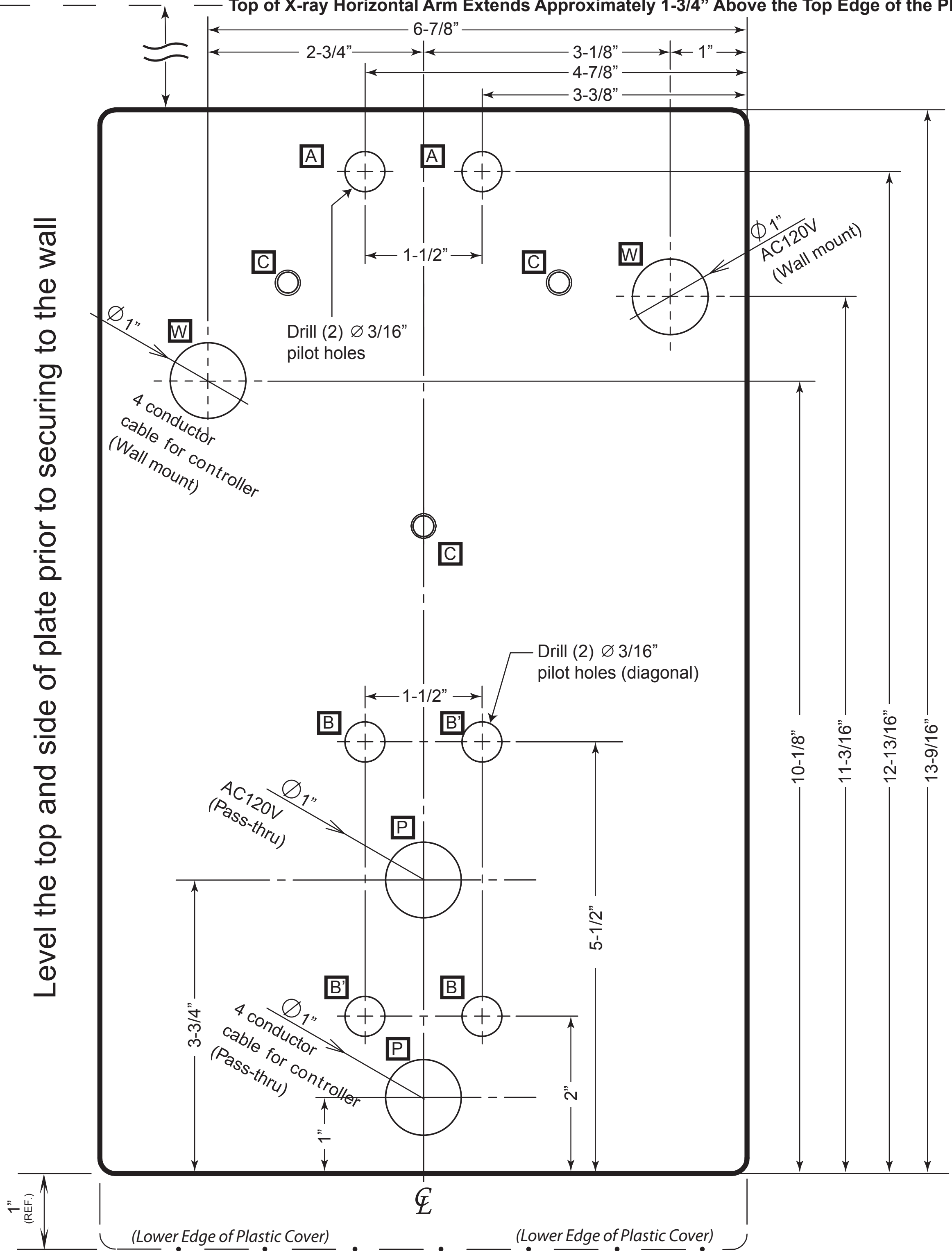
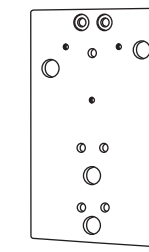


Top of X-ray Horizontal Arm Extends Approximately 1-3/4" Above the Top Edge of the Plate

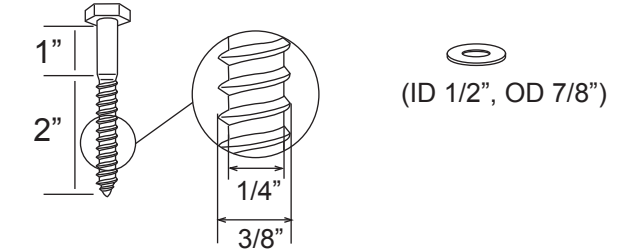


1. Optional 097PTP Plate & Mounting Hardware:

(1) 097PTP plate for mounting 097 & 505 X-rays for pass-thru and double 2x4 stud mounting.

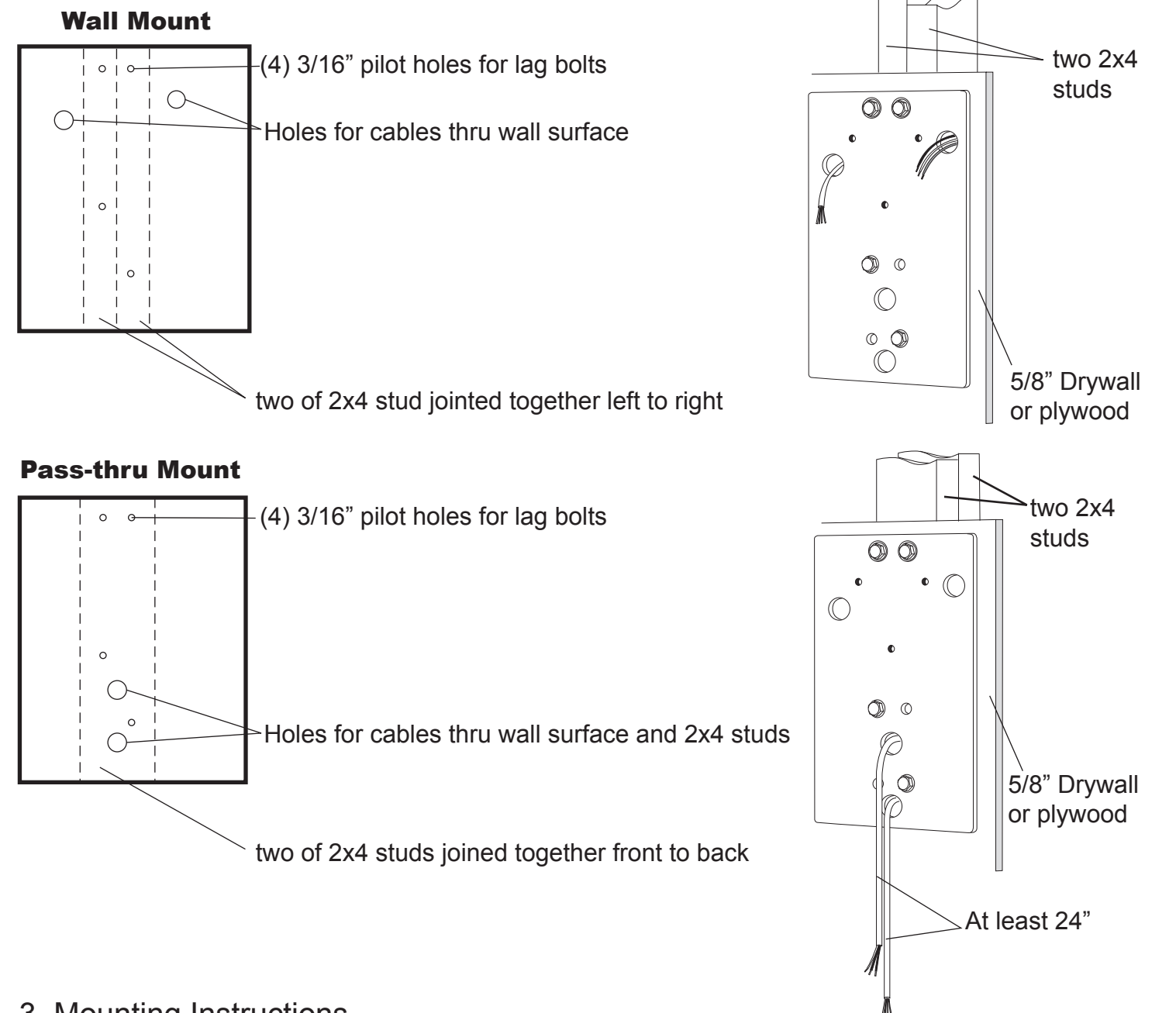


(4) Lag bolts
(4) Flat washers



2. Pre-Installation Preparation:

Drill (4) 3/16" Dia. pilot holes for lag bolts and (2) 1" Dia. thru holes for cables at locations as shown on the template.



3. Mounting Instructions

(1) Attaching the 097PTP plate onto wood studs (two vertical 2 x 4 studs firmly joined together, as shown above).

- Attach the plate with lag screws & washers supplied. Level top and side of plate prior to tightening lag screws.

- Use two of the holes on top. See holes marked **A** on the drawing.

- Select best two diagonal hole locations from four available locations on the bottom. See holes marked **B** or **B'** on the drawing.

For all types of wall construction, mounting hardware must withstand a 100 lb. (45 kg) sheer load and a 450 lb. (203 kg) withdrawal force at each of the four mounting bolts or lag screws.

(2) The 097PTP plate has three M8 threaded holes for attaching the arm bracket of Belray II (Model 097). M8 bolts are provided with the x-ray unit. See holes marked **C**.

(3) four possible 1" diameter hole locations are provided for wires to pass through. For wall mount, use two holes marked **W**. For Pass-thru mount, use two holes marked **P**.

**Bel-Ray II (Model 097)
PHOT-xIIs (Model 505)**

Double 2x4 mount and Pass-Thru
Template and Preinstallation instructions



1-800-223-1192

TEMPL016 Rev. 102815

Minimum Mounting Height from Finished Floor to the Bottom Edge of Plate: 34-1/2"