



## Bel-Cypher Pro

Panoramic X-ray

# ■ Bel-Cypher Pro

## Panoramic X-ray

Delivers powerful digital imaging solutions with superb diagnostic quality exposures.



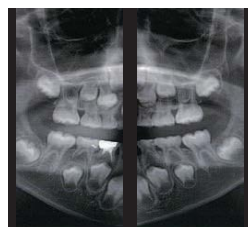
Adult



Child



Panoramic Bitewing



TMJ 4 Section (lateral view)



### Sharp Imaging

Produces crisp diagnostic quality panoramic (adult & child), lateral (4) TMJ, and bitewing images.

### Ergonomic

Pushbutton control automatically adjusts x-ray head height positioning to accommodate different patient heights.

### Tomosynthesis Mode

Unique tomosynthesis image optimization tools provide operators with the ability to reduce the need for making repeated exposures due to patient positioning errors.

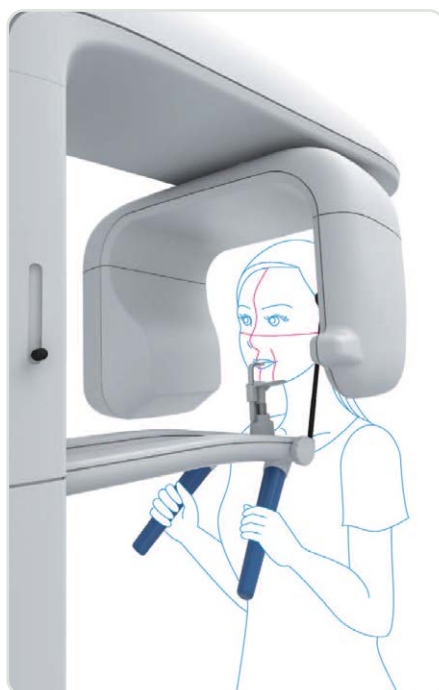
### Bitewing Imaging Mode

For interproximal caries detection, the bitewing imaging mode is especially useful for obtaining images from patients that experience "gag" reflex with sensors or film holders used in traditional intraoral imaging methods.

## Accessible Controls



## Simple Positioning



## Adjustable Height



## Patient Alignment

3 bright red laser beams are used to simplify the alignment of patient Frankfort, mid-sagittal & focal trough planes for accurate imaging.



Simple Graphic User Interface (GUI) allows users to quickly and easily select exposure settings with the click of a mouse.

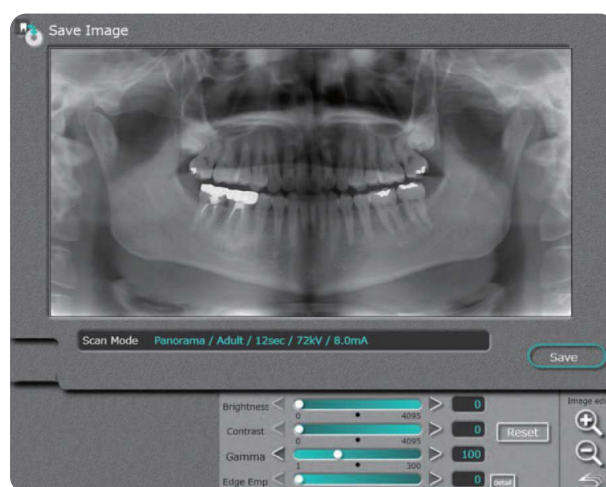
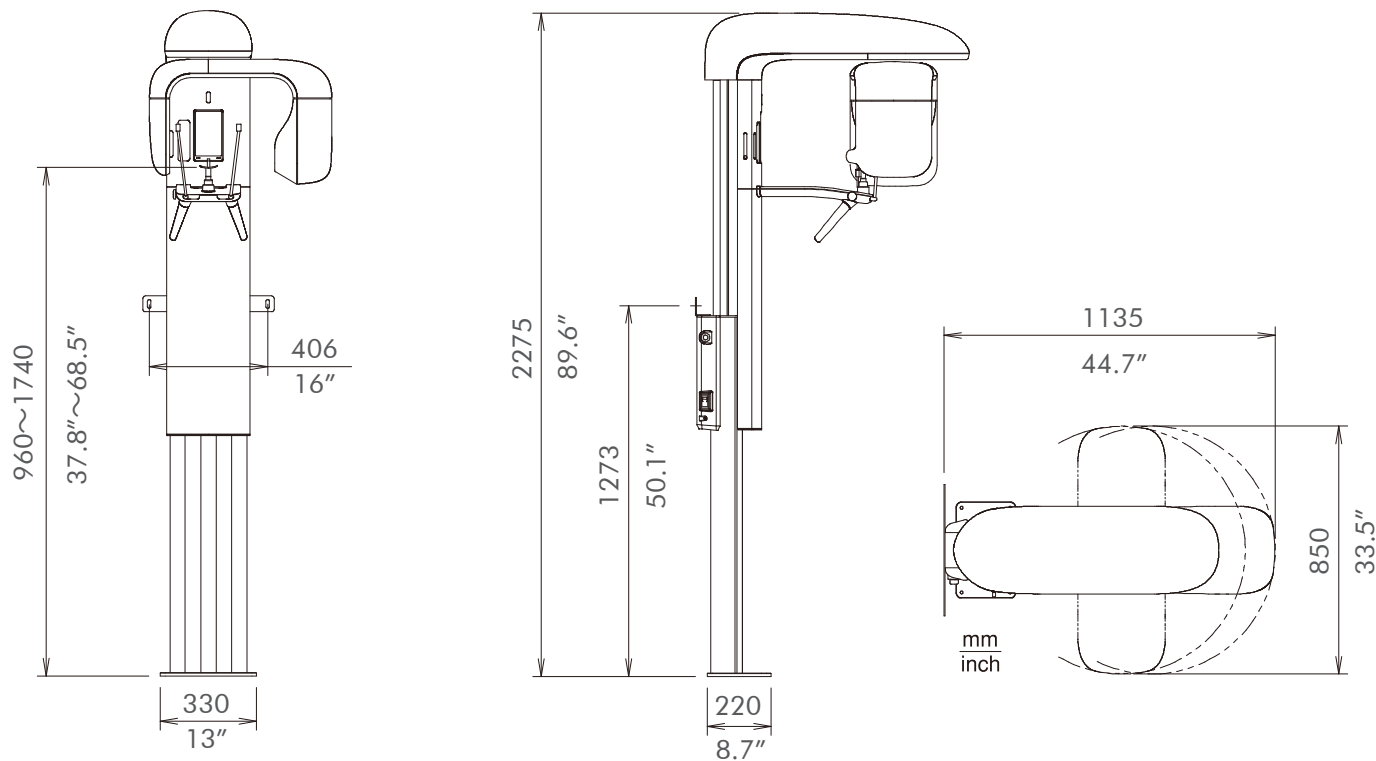


Image brightness, contrast, gamma, and edge enhancement are adjustable through the Bel-Cypher Pro's Graphic User Interface.

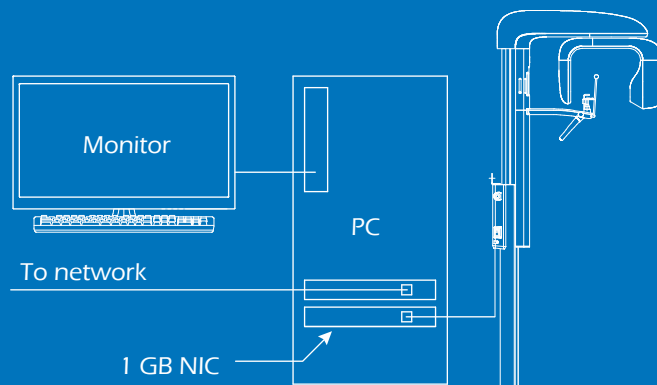


Add 1/2" to height, if you use a flat plate style free standing base. (not shown).

With free standing base.

## SPECIFICATIONS

Power Voltage:	120Vac 60Hz
Power Capacity:	9A
High Tension Generator:	High Tension Generator (100kHz)
X-ray Tube Voltage:	60kV to 80 kV (1kV step)
X-ray Tube Current:	2 to 8mA (1mA step and R'10 series)
Exposure Method:	Manual
X-ray Tube:	D-052SB (Toshiba)
X-ray Tube Focal Spot:	0.5 mm
Total Filtration:	2.5 mm Al (minimum)
Radiographic Mode:	Panorama: (Adult, Child), Panoramic Bitewing: (Adult, Child) TMJ:
Exposure Time:	Panorama: 10 sec, Panoramic Bitewing: 4.6 sec. TMJ: 2.5 sec. (x4)
Magnification Ratio:	Panorama: 1.2 to 1.3, Panoramic Bitewing: 1.2 to 1.3 TMJ: 1.2
Image Receiver:	CMOS Digital Sensor
Beam for Patient Positioning:	3 Beams
Dimensions:	Width: 850 mm (33-1/2") Depth: 1,135 mm (44-2/3") Height: 2,275 mm (89-1/2")
Weight:	Approximately 231 lb (105 kg)



Bel-Cypher Pro

**TWAIN compatible**  
Interface: Ethernet 1000 Base-T  
Optional free standing base

### Computer Requirements

**CPU**  
Intel Xeon E3-1226V3(3.3GHz) or later recommended

**Video**  
Intel HD Graphics 4600 or later recommended

**Memory**  
8GB

**Operating System**  
Windows 7 Professional 64bit  
Windows 8 Professional 64bit  
Windows 10 Professional 64bit

Belmont Equipment  
101 Belmont Drive  
Somerset, NJ 08873  
(800) 223-1192  
www.belmontequip.com

Takara Company Canada Ltd.  
2076 South Sheridan Way  
Mississauga, ON  
L5J 2M4, Canada  
(800) 268-5351  
dental.takarabelmont.ca

**Belmont**  
Delivering Value in Quality

@BelmontEquipUS

