

DRAFT

PRO III 047

INSTALLATION INSTRUCTIONS

Table of Contents

| | | |
|-------|--|----|
| 1 | Safety Consideration | |
| 1-1 | Risk Level Interpretation | 3 |
| 1-2 | Safety Precautions | 5 |
| 2 | Cautions regarding installation | |
| 2-1 | Precautions for installation | 6 |
| 3 | Installation | |
| 3-1 | Dimensions | 7 |
| 3-2 | Necessary tools and supplied parts | 8 |
| 3-2-1 | Necessary tools | 8 |
| 3-2-2 | Supplied parts | 9 |
| 3-3 | Installation procedures | 10 |
| 4 | Flow Diagram/Wiring Diagram | |
| 4-1 | Flow Diagram | 13 |
| 4-2 | Wiring Diagram | 15 |

2019-01 (First Edition)

REF

1E0796AE

1 Safety Consideration

1-1 Risk Level Interpretation

Precautions before use

Make sure to carefully read the Safety Precautions and Operating Precautions and use the product correctly.

These precautions are intended to ensure the safe use of the product and prevent harm or damage to users or other people. According to the magnitude of harm and damage and the degree of urgency, an incident that may be caused by misuse of the product is classified into one of the following categories: CONTRAINDICATION, WARNING, and CAUTION.

All of these categories are important for safety. Always follow the instructions provided.

We assume no responsibility for any accident due to failure to follow the Safety Precautions even in the event of harm or damage to users or other persons.

In such case, users or other persons who use the product without observing the Safety Precautions is responsible for any harm or damage incurred.

The graphical symbols are explained in detail below.

Once you have fully understood this explanation, read the text.

Classification by degree of harm or damage and urgency

CONTRAINDICATION

Use of the product without regard to this indication will create a hazardous condition that may result in death or serious injury.



WARNING

Improper handling of the product without regard to this indication will create a hazardous condition that may result in death or serious injury.



CAUTION

Improper handling of the product without regard to this indication will create a potentially hazardous condition that may result in moderate or slight injury or property damage.

The following graphical symbols are used to explain your responsibilities for using the product safely:

Graphical symbols for prohibited activity



Generally prohibited activity



Disassembly, repair or modification prohibited

Graphical symbol for mandatory instructions



Mandatory instructions for ordinary users

1-2 Safety Precautions

CONTRAINDICATION

Installing or transferring the product



Precautions regarding installation

Do not install the product near electromagnetic sources such as communication facilities or elevators.

Malfunction of this product may occur in the presence of electromagnetic interference waves.

WARNING

Installing or transferring the product



Precautions for installation

Make sure to place the product on a firm and flat floor.

Placing the equipment on a tilted floor ($\geq 5^\circ$) may cause it to fall.

To avoid the risk of electric shock, this equipment must only be connected to a supply mains with protective earth.

Failure or electric leak may result in electric shock.

Installation



Precautions for operating the chair

Before and during the chair operation, pay close attention to the operation range (seat raising/lowering direction, backrest lowering/raising direction, and legrest traveling direction, and ensure that the chair does not contact any body parts, hands or feet, or objects. Body parts, hands or feet, or objects may become caught in the chair, causing injury or damage to peripheral devices.

CAUTION

Installation



Cautions on Installation Work

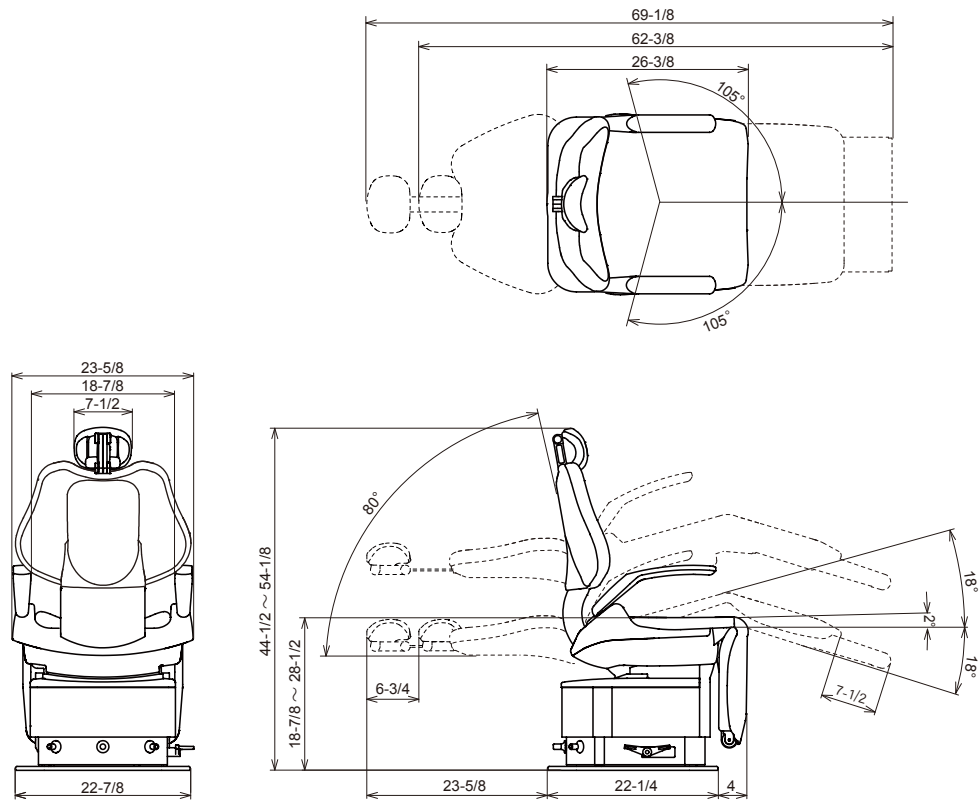
Metal or mechanical parts of this product may have sharp edges or corners. Be careful to avoid injury to your hands and fingers during installation work.

2 Cautions regarding installation

2-1 Precautions for installation

1. While carrying the chair, make sure to hold only the designated parts. If not, it may lead to physical injury.
2. Confirm that the fixing bolts are tightened before carrying the chair.
3. Take care not to topple the equipment during transportation.
4. Do not drop, hit, or give a shock to the product.
5. Do not connect a power supply other than the rated voltage.
6. Make sure to connect ground wires.
7. When all the installation procedures have been completed, verify that each function works properly.

3-1 Dimensions



Unit: inch (Dimensional tolerance:±10%)

*Dimensions and specifications are subject to change without notice.

3 Installation

3-2 Necessary tools and supplied parts

3-2-1 Necessary tools

The table below shows the necessary tools for the installation of this product.

| No. | Tool name | QTY. |
|-----|---|------------|
| 1 | Phillips screwdriver No. 1–3 | 1 for each |
| 2 | Monkey wrench (Max. opening width: 29 mm) | 1 |
| 3 | 6-piece double head open end wrench set (5.5–24 mm) | 1 |
| 4 | 8-piece hex key wrench set (1.5–8 mm) | 1 |
| 5 | Level | 1 |

3 Installation

3-2-2 Supplied parts

The table below shows the supplied parts included in the chair.

Chair (unit)

| No. | Part name | QTY. |
|-----|--|------|
| 1 | Bolt cap | 4 |
| 2 | Hex head flange screw TP-A, M8 × 30, black | 4 |
| 3 | Countersunk screw, M5 × 8, plated | 3 |
| 4 | Truss screw M4×6, plated | 6 |
| 5 | Truss screw, M5×8, chrome-plated | 4 |
| 6 | Headrest unit | 1 |
| 7 | Headrest cover | 1 |
| 8 | Backrest cover | 1 |

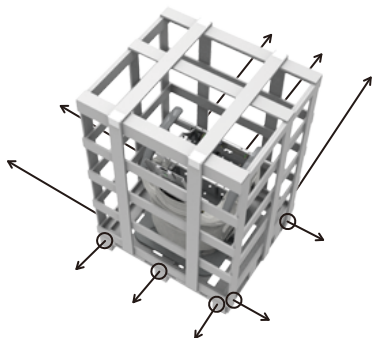
Chair (cover parts)

| No. | Part name | QTY. |
|-----|-----------------------|------|
| 1 | Seat | 1 |
| 2 | Backrest | 1 |
| 3 | Headrest | 1 |
| 4 | Roll-up legrest | 1 |
| 5 | Roll-up legrest cover | 1 |

3-3 Installation instructions

1. Unpack the carton of the chair.

Remove TP-A, M4 × 35, plated (10 pieces) for packing.



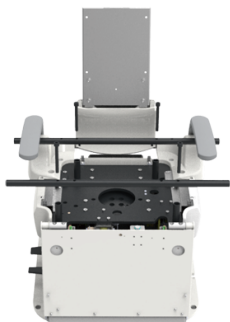
2. Remove the chair from the skid.

Remove the hex coach bolts, M6 × 50, plated (4 pieces) that fix the base and skid.

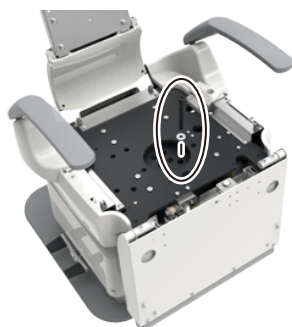


3. Place the chair at the approximate location.

By holding the carriage bar, bring up the chair to move it out of the skid.



4. Remove the carriage bar by unscrewing hex bolts, M8 × 95, plated (4 pieces).



5. Remove the fixing bolts.

Remove the hex bolt, M10 × 120, plated (1 piece).

3 Installation



6. Attach the backrest.

Fix the backrest with truss head screws, M5 × 8, chrome-plated (4 pieces).



7. Attach the headrest.

(1) Pass the headrest cover to the headrest bar.



(2) Attach the headrest to the headrest bar.

Fix the headrest with the countersunk screws, M5 × 8, plated (3 pieces).



(3) Attach the headrest cover.

Insert the catch of the headrest cover to the headrest.



(4) Insert the headrest bar to the headrest unit.



8. Attach the backrest cover.

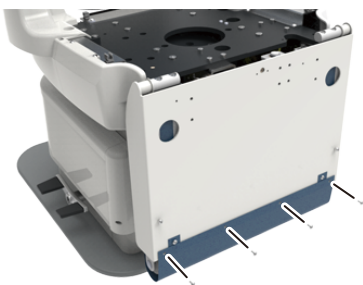
Insert the catch of the backrest cover to the backrest.

3 Installation



9. Attach the roll-up legrest.

Fix the roll-up legrest with truss head screws M4×6, plated (2 pieces).



10. Attach the roll-up legrest cover.

Fix the roll-up legrest cover with truss head screws M4×6, plated (4 pieces).



11. Attach the seat

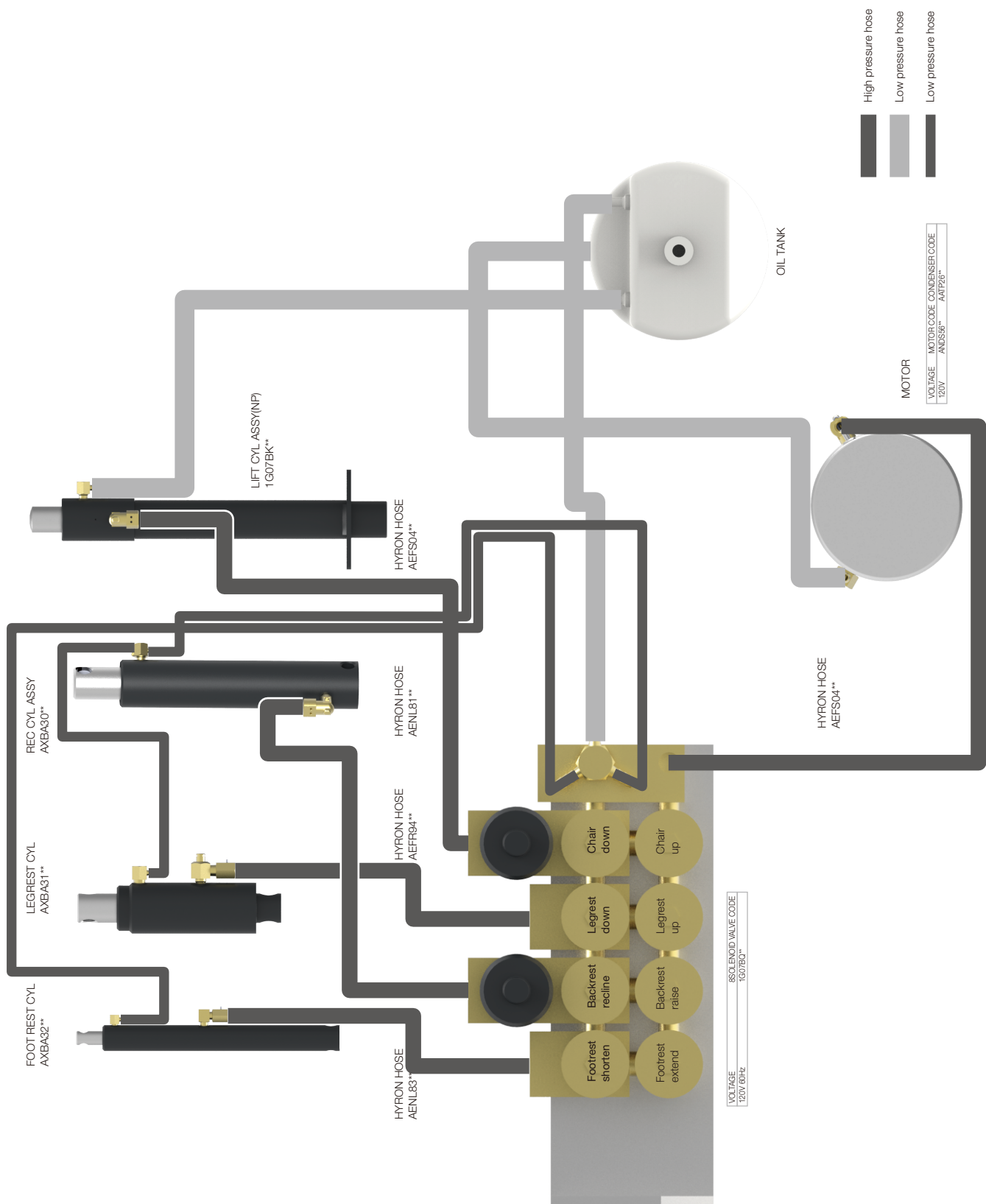


12. Fix the chair to the floor.

Use hex head flange screws, TP-A M8 × 30, black (4 pieces).

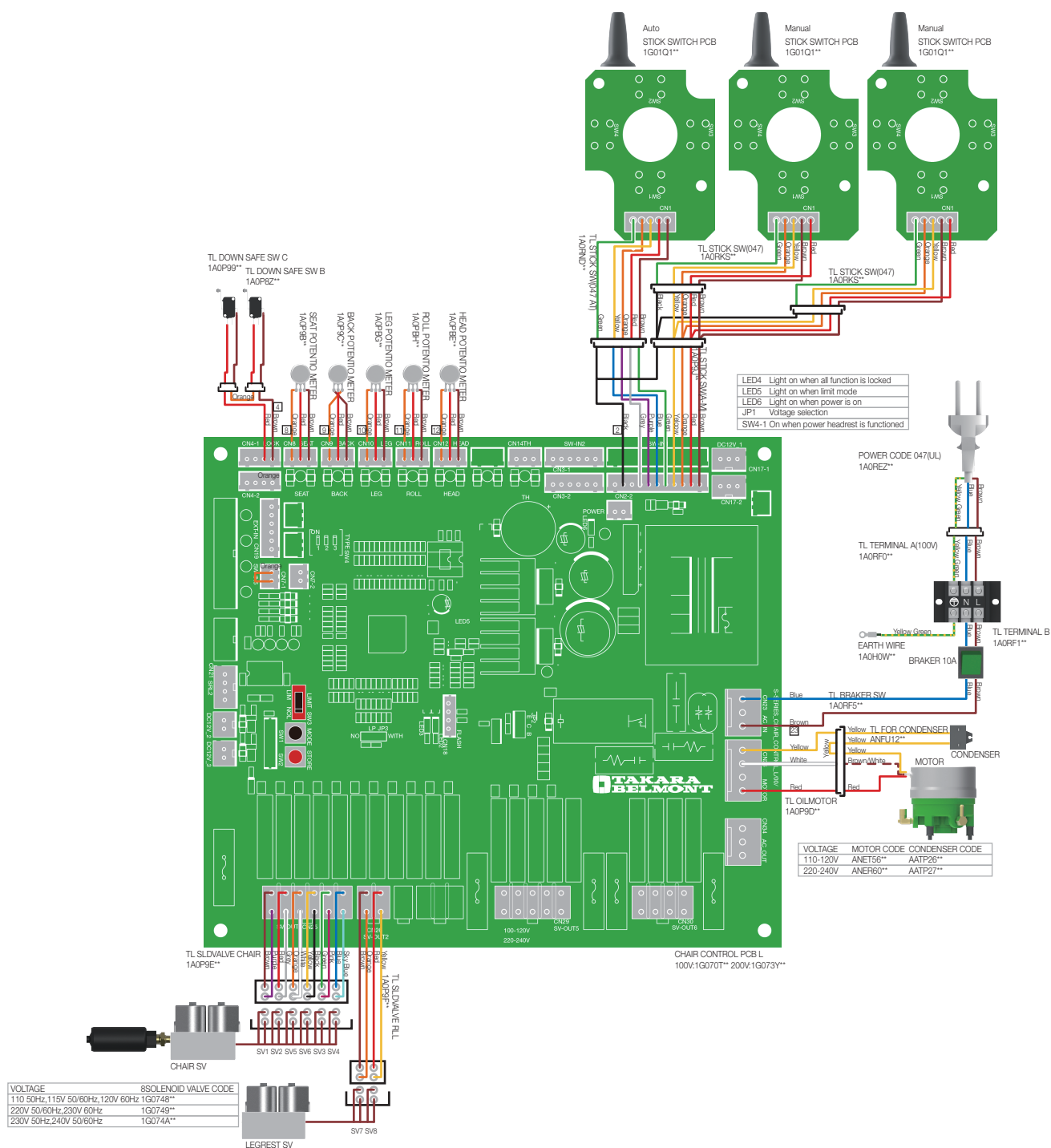
13. Put the bolt caps (4 pieces) to the bolts attached in Procedure 12.

4-1 Flow Diagram



4 Flow Diagram/Wiring Diagram

4-2 Wiring Diagram





Importer for U.S.A.

BELMONT EQUIPMENT, Division of Takara Belmont USA, Inc.

101 Belmont Drive, Somerset, New Jersey 08873 U.S.A.

TEL.:(732) 469-5000 / (800) 223-1192 FAX.:(732)526-6322 / (800) 280-7504

Importer for Canada

TAKARA CO, CANADA LTD.

2076 S. Sheridan Way, Mississauga, Ont., L5J2M4, Can.

TEL.:(905) 822-2755 FAX.:(905)822-6203



TAKARA BELMONT CORPORATION (Manufacturer)

2-1-1, Higashishinsaibashi, Chuo-ku, Osaka, 542-0083, Japan

TEL.:81-6-6213-5945 FAX.:81-6-6212-3680