



PHOT-xIIs LCD

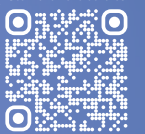
Intraoral Imaging System

Crystal-clear imaging
for the success of your practice.



PHOT-xIIs LCD
Intraoral Imaging System

Scan for other brochures





**Crystal-Clear Imaging
for the Success of
Your Practice.**



PHOT-xlls LCD
Intraoral Imaging System

Crisp imaging and ease of use
makes the PHOT-xlls with LCD
an integral part of any dental practice.

Intuitive Control, Touchscreen Panel

Experience the user-friendly control and intuitive interface with the PHOT-xlls LCD intraoral x-ray system. The brightly lit user interface and touchscreen panel places advanced imaging technology at your fingertips, providing precise control over exposure settings and image parameters for superior diagnostic results.



Easy-clean,
glass screen

Exposure switch

Easy to Position, Compact Tube Head

From patient entry to positioning for imaging, the PHOT-xlls intraoral x-ray provides exceptional usability. The compact and lightweight tube head and adjustable arm system are easily maneuvered into the perfect position for capturing x-ray images.

Illuminated ON/OFF switch

Head and scissor-arm
fold flat to the wall

Lightweight tube head

User-friendly Operation

1. Position the x-ray tube head.
2. Select imaging parameters.
3. Press the exposure switch.

Settings can be manually adjusted from automatic settings with touchscreen controls.

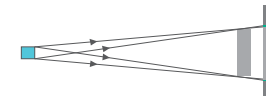
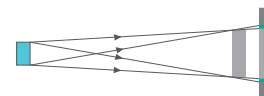


Sharp, Detailed Images

Small 0.4mm focal spot produces the sharpest image possible.

Large focal spot reduced image definition

0.4mm focal spot sharply defined image





Capture crisp, crystal-clear imaging from nearly every angle.

Belmont
CHAIRLOVE

**Designed to Empower
Exceptional Care.**

The PHOT-xlls intraoral x-ray system delivers superb images, convenience, and control. With its compact and lightweight tube head and adjustable arm system, operators can effortlessly position the unit for optimal imaging from any angle. Whether you choose a standard wall mount configuration or cabinet-mounted solutions, this intraoral x-ray adapts seamlessly to your practice needs, delivering unparalleled clarity and detail in diagnostic imaging.

Tube Voltage Selection

PHOT-xlIs with LCD has 2 tube voltage selection settings to optimize diagnostic imaging:

[60 kV] Setting Provides:

Balanced contrast for general caries detection.

Excellent definition and detail for periapical and bone structure imaging.

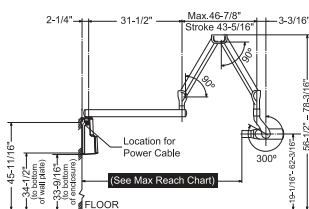
[70 kV] Setting Provides:

Imaging for the examination of patients periodontal disease condition.

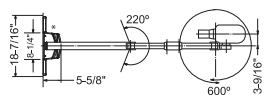
Improved pediatric imaging when used in combination with decreased exposure time settings to compensate for patient motion during exposures.

Dimensions:

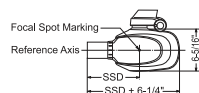
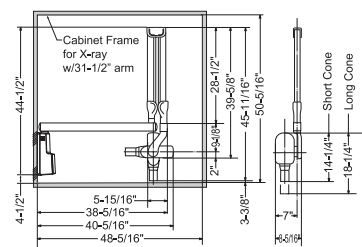
Wall Mount



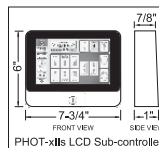
Maximum Reach:	84-1/8" with 40.0" arm	64-1/8" with 20.0" arm
	75-5/8" with 31.5" arm	56-1/8" with 12.0" arm

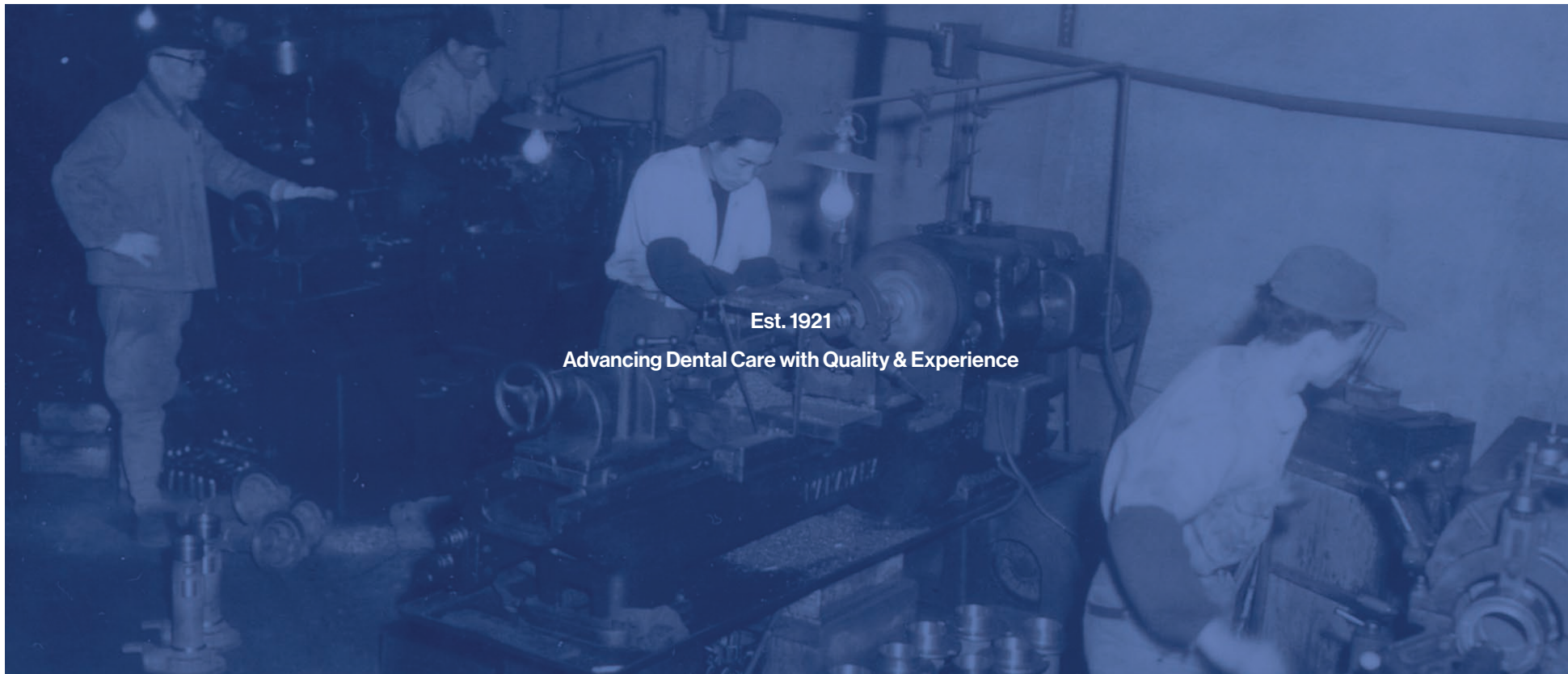


Pass-thru mount



SSD (Source to Skin Distance):
a. Regular cone—8 inches (203 mm)
b. Long cone—12 inches (305 mm)





Est. 1921

Advancing Dental Care with Quality & Experience



Belmont Equipment
Takara Company Canada Ltd.

101 Belmont Drive, Somerset, NJ 08873
2455 Meadowvale Boulevard, Mississauga, Ontario, L5N 5S2

(800) 223-1192 www.belmontequip.com

(800) 268-5351 www.belmont.ca

The specifications and colors are subject to change without notice.