



Installation Instructions for Swing Mount System



Table of Contents	Page
Unit Installation Notes	2
Swing Arm Assembly to Chair Installation	3
Delivery System Installation	4
Utility Center Installation	5



Installation Instructions for Swing Mount System

Unit Installation Notes

Before You Begin

- Study the Unit Overview in this booklet and Layout Dimensions from the Owners Manual. Make sure the planned location will have the necessary space available for installation. Including room for travel of the chair's base and backrest.
- Open all containers and review the contents. It may be helpful to locate all kits containing accessories. (Smaller parts are often packaged together to avoid being lost.)
- Locate all documentation supplied with the package. Manuals and Installation sheets may be found in one or more boxes accompanying their respective components. Set aside the Owner's Manual for the end user to review.
- If a new chair and unit are to be installed, setup the chair first. Refer to the installation manual supplied with the chair for instructions.

SYMBOLS USED IN THIS MANUAL

The following symbols may be used throughout this product manual:



CAUTION: Failure to carefully follow the described procedure may result in damage to the equipment.



WARNING: Failure to carefully follow the described procedure may result in damage to the equipment or the operator.

SUGGESTED TOOLS:

- 19mm wrench, socket or open end
- 9/16in. wrench, socket or open end
- Adjustable wrench
- SAE hex key set
- Post level or a magnetic level
- Scissors or utility knife
- Wire strippers
- Flathead screwdriver, small
- Philips screwdriver, small



Installation Instructions for Swing Mount System

Swing Arm Assembly to Chair Installation

1. Install the adapter plate to the top of the chair casting extension with the three supplied M12 x 40 bolts and M12 washers.

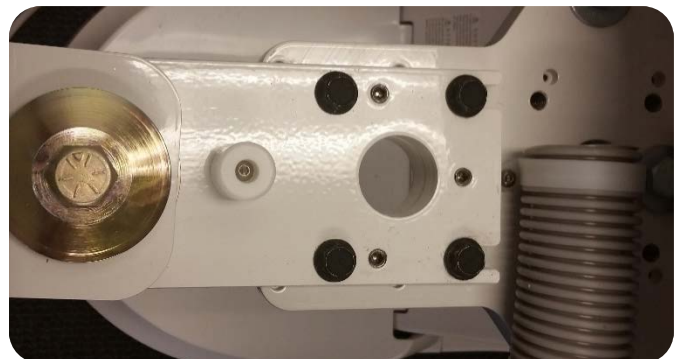


2. Install the Swing Arm Assembly to the top of the adapter plate with the four supplied 3/8-16 x 1.25 flanged bolts. Start two bolts at the back to support the swing arm assembly, then install the (2) remaining bolts.



3. Attach a post level to one of the swing mount poles. Adjust the three leveling screws in the top of the axle plate until the poles are level. **NOTE:** It may be necessary to loosen the (4) flanged bolts, from Step 2 above, in order to adjust the leveling screws. Once leveling is complete, secure the poles in place by tightening the flanged screws.

4. Install the corrugated umbilical duct hose to the top of the adapter plate with the supplied 10-32 x 0.5 screw and "P" style clamp.





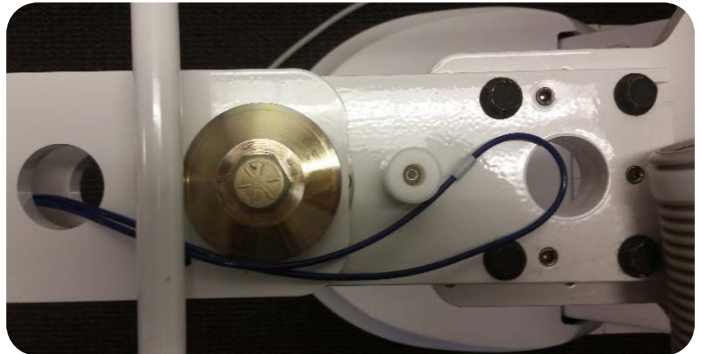
Installation Instructions for Swing Mount System

Delivery System Installation

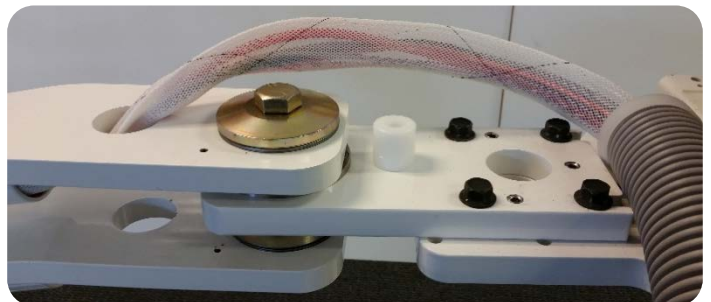
1. Route the delivery system umbilical through the unit pole, then complete the installation with the full insertion of the flex arm knuckle into the top of the unit pole. Install the water bottle to the water system.



2. Connect the short blue tubing from the delivery system umbilical to the short blue tubing from the water system umbilical with the supplied in-line barb and sleeves.



3. Slide the supplied poly knit sleeve over the umbilical tubing and several inches into the unit swing arm, then route the umbilical through the 1-3/4in. corrugated umbilical duct hose to the floor utilities.

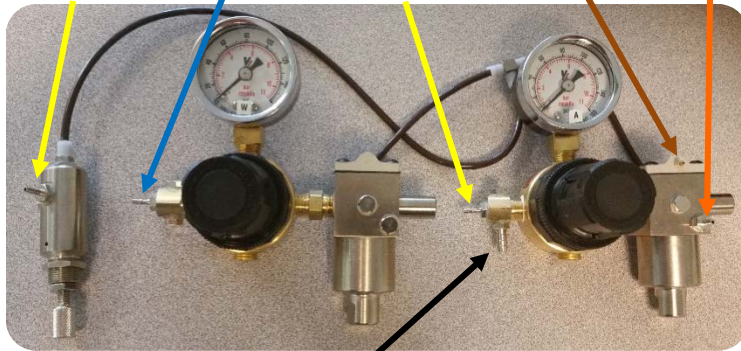


Belmont

Installation Instructions for Swing Mount System Utility Center Installation

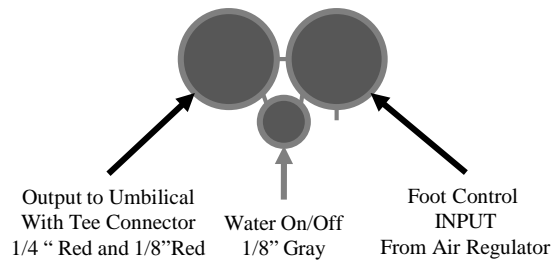
1. Place the junction box frame over the floor plumbing stub ups (Refer to J-Box Floor Template).
2. Connect the umbilical tubing to the appropriate connection points with the supplied sleeves.
NOTE: Foot control comes factory installed to the air regulator.

1/8" Yellow Tubing From Water System Umbilical
1/8" Blue Tubing
1/8" Yellow Tubing From Delivery System Umbilical
1/8" Brown Tubing
1/8" Orange Tubing

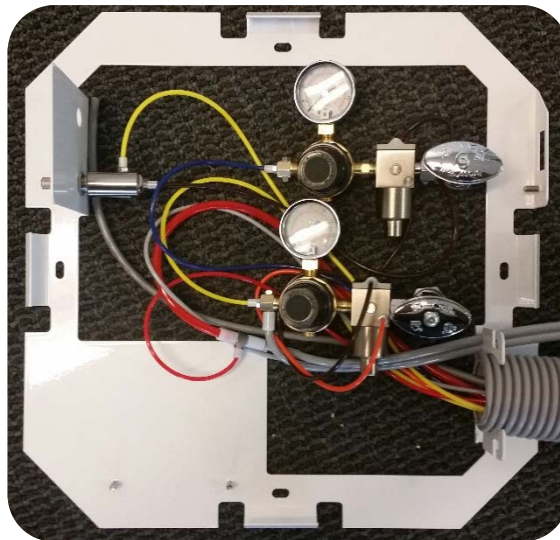


Foot Control
INPUT

Foot Control Tubing



3. Install the Air and Water Regulators to the manual shut-off valves and the water bottle regulator to the j-box frame.



For System Adjustments and Operation, Refer to the Use and Care Guide