

Bel-Cypher Pro Panoramic X-ray

■ Bel-Cypher Pro

Panoramic X-ray

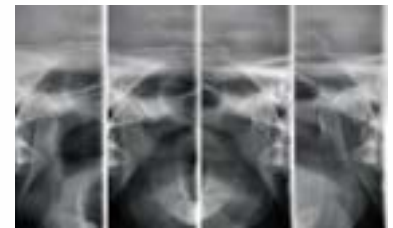
Delivers powerful digital imaging solutions with superb diagnostic quality exposures.



Panoramic Bitewing



TMJ 4 Section (lateral view)



Sharp Imaging

Produces crisp diagnostic quality panoramic (adult & child), lateral (4) TMJ, and bitewing images.

Ergonomic

Pushbutton control automatically adjusts x-ray head height positioning to accommodate different patient heights.

Tomosynthesis Mode

Unique tomosynthesis image optimization tools provide operators with the ability to reduce the need for making repeated exposures due to patient positioning errors.

Bitewing Imaging Mode

For interproximal caries detection, the bitewing imaging mode is especially useful for obtaining images from patients that experience "gag" reflex with sensors or film holders used in traditional intraoral imaging methods.

Accessible Controls



Simple Positioning



Adjustable Height



Patient Alignment

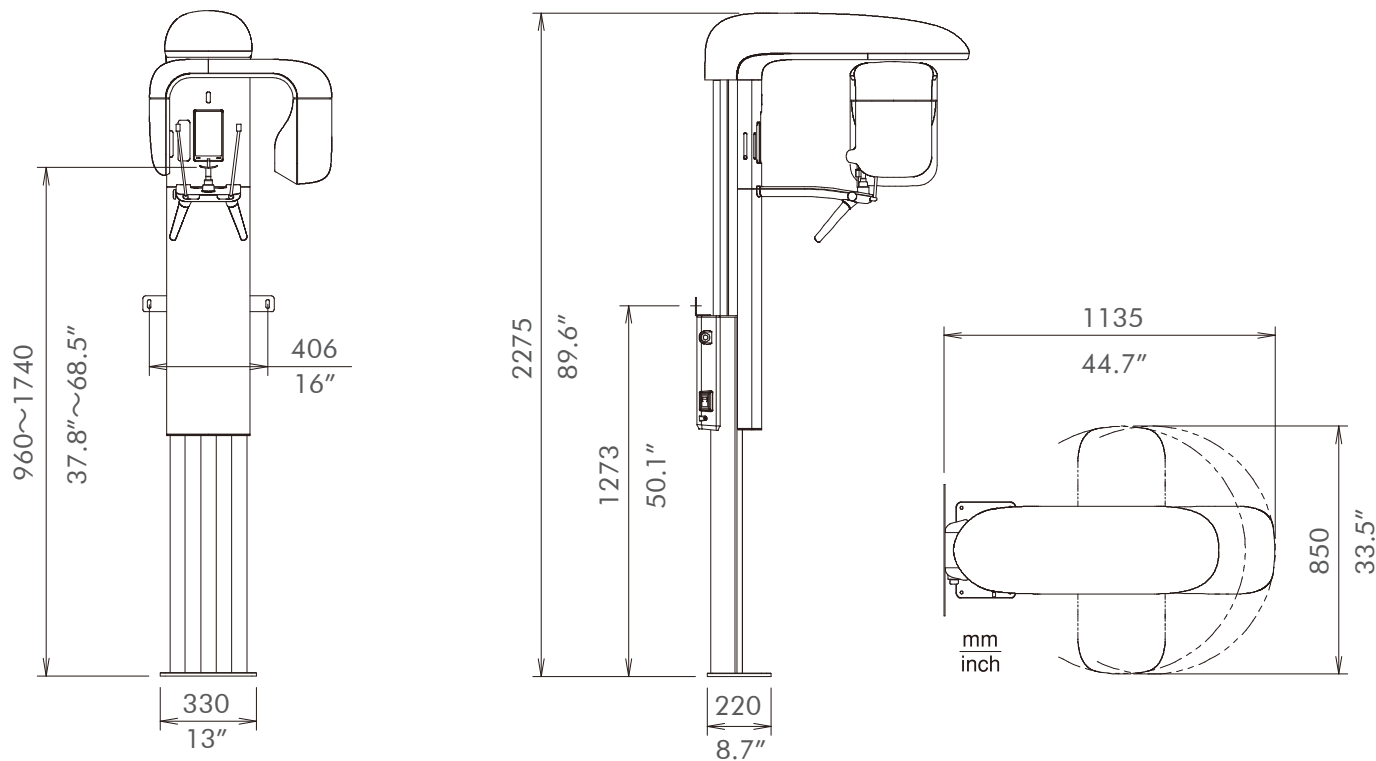
3 bright red laser beams are used to simplify the alignment of patient Frankfort, mid-sagittal & focal trough planes for accurate imaging.



Simple Graphic User Interface (GUI) allows users to quickly and easily select exposure settings with the click of a mouse.



Image brightness, contrast, gamma, and edge enhancement are adjustable through the Bel-Cypher Pro's Graphic User Interface.

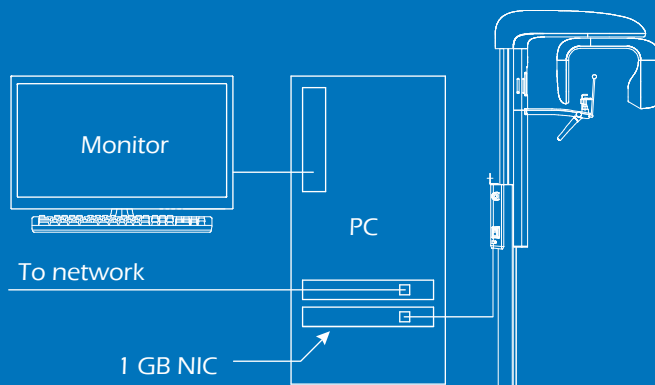


Add 1/2" to height, if you use a flat plate style free standing base. (not shown).

With free standing base.

SPECIFICATIONS

Power Voltage:	120Vac 60Hz
Power Capacity:	9A
High Tension Generator:	High Tension Generator (100kHz)
X-ray Tube Voltage:	60kV to 80 kV (1kV step)
X-ray Tube Current:	2 to 8mA (1mA step and R'10 series)
Exposure Method:	Manual
X-ray Tube:	D-052SB (Toshiba)
X-ray Tube Focal Spot:	0.5 mm
Total Filtration:	2.5 mm Al (minimum)
Radiographic Mode:	Panorama: (Adult, Child), Panoramic Bitewing: (Adult, Child) TMJ:
Exposure Time:	Panorama: 10 sec, Panoramic Bitewing: 4.6 sec. TMJ: 2.5 sec. (x4)
Magnification Ratio:	Panorama: 1.2 to 1.3, Panoramic Bitewing: 1.2 to 1.3 TMJ: 1.2
Image Receiver:	CMOS Digital Sensor
Beam for Patient Positioning:	3 Beams
Dimensions:	Width: 850 mm (33-1/2") Depth: 1,135 mm (44-2/3") Height: 2,275 mm (89-1/2")
Weight:	Approximately 231 lb (105 kg)



Bel-Cypher Pro

TWAIN compatible
Interface: Ethernet 1000 Base-T
Optional free standing base

Computer Requirements

CPU
Intel Xeon E3-1226V3(3.3GHz) or later recommended

Memory
8GB

Video
Intel HD Graphics 4600 or later recommended

Operating System
Windows 7 Professional 64bit
Windows 8 Professional 64bit
Windows 10 Professional 64bit

Belmont Equipment
101 Belmont Drive
Somerset, NJ 08873
(800) 223-1192
www.belmontequip.com

Takara Company Canada Ltd.
2076 South Sheridan Way
Mississauga, ON
L5J 2M4, Canada
(800) 268-5351
dental.takarabelmont.ca

Belmont
Delivering Value in Quality

@BelmontEquipUS

