



PREINSTALLATION TEMPLATE

FOR

MODEL # 096

WALL PLATE

4 X 4 MOUNT

BELMONT EQUIPMENT

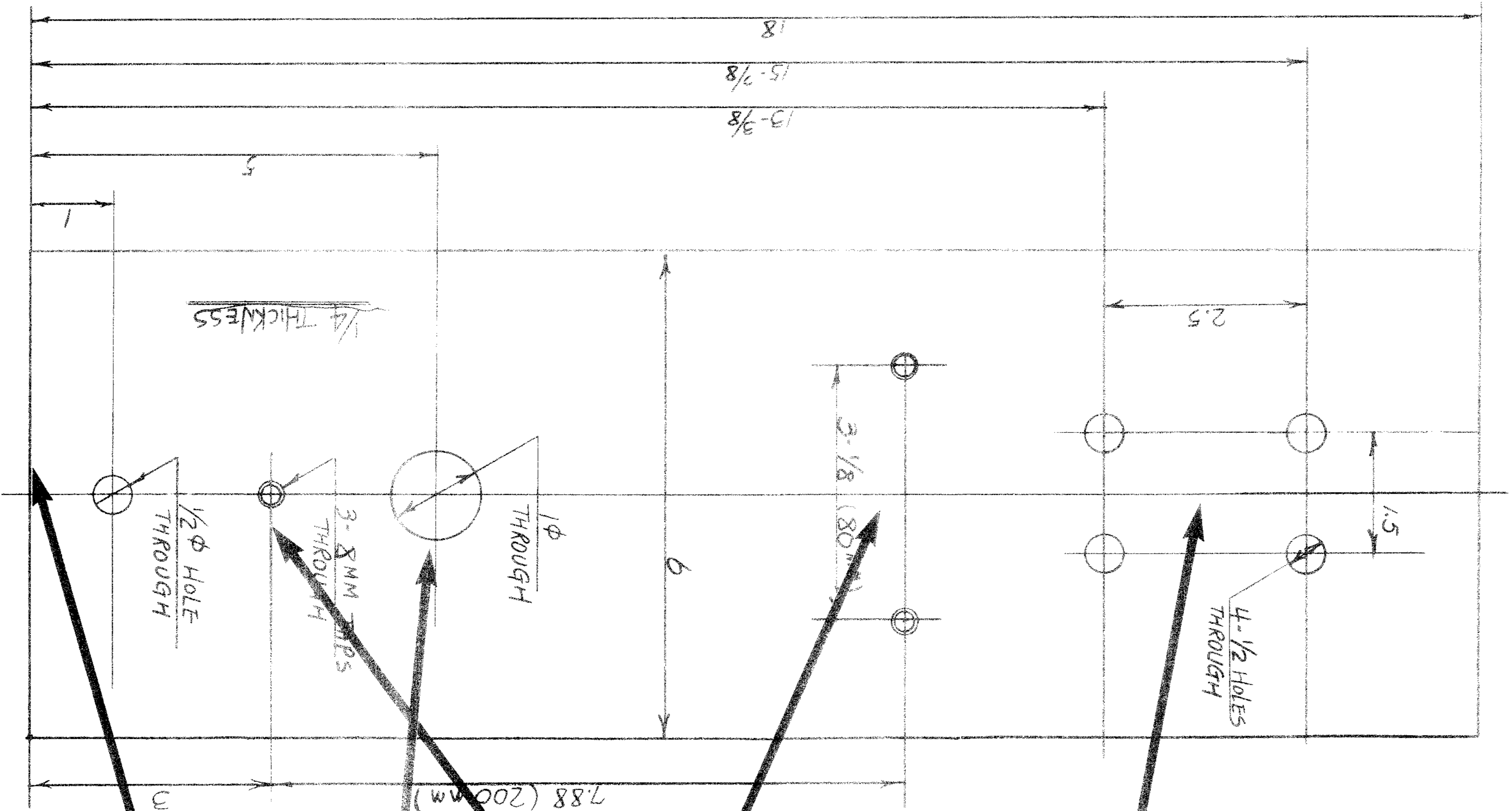
A DIVISION OF TAKARA BELMONT USA, INC.

101 Belmont Drive, Somerset, NJ 08873

(732) 469-5000

TOLL FREE (800) 223-1192

TOLL FREE FAX (800) 280-7504



INSTALLATION INSTRUCTIONS

1. 3 lag screws are supplied for mounting the plate on wood studs; 2 vertical 2" x 4" studs joined together.

Use 2 diagonal holes only; 4 are provided at top to allow a selection of the best 2 diagonal locations.

For all types of wall construction mounting hardware must withstand a 100 pound (45 kg) shear load and a 450 pound (202.5 kg) withdrawal force at each of the three mounting bolts or lag screws.

2. 3 holes are pre-drilled and threaded to mount the model 096 or model 071A wall mount bracket; bolts are provided with the x-ray unit.

A 1" diameter hole is provided for the wire to pass through from the j-box to the connection location in the bottom of the wall mount bracket.

The bottom of the wall mount plate should be located 40.5" above the floor.

ACURAY, Model 071A
BELRAY, Model 096
4 x 4 Mounting Plate
Pass-Through Installations