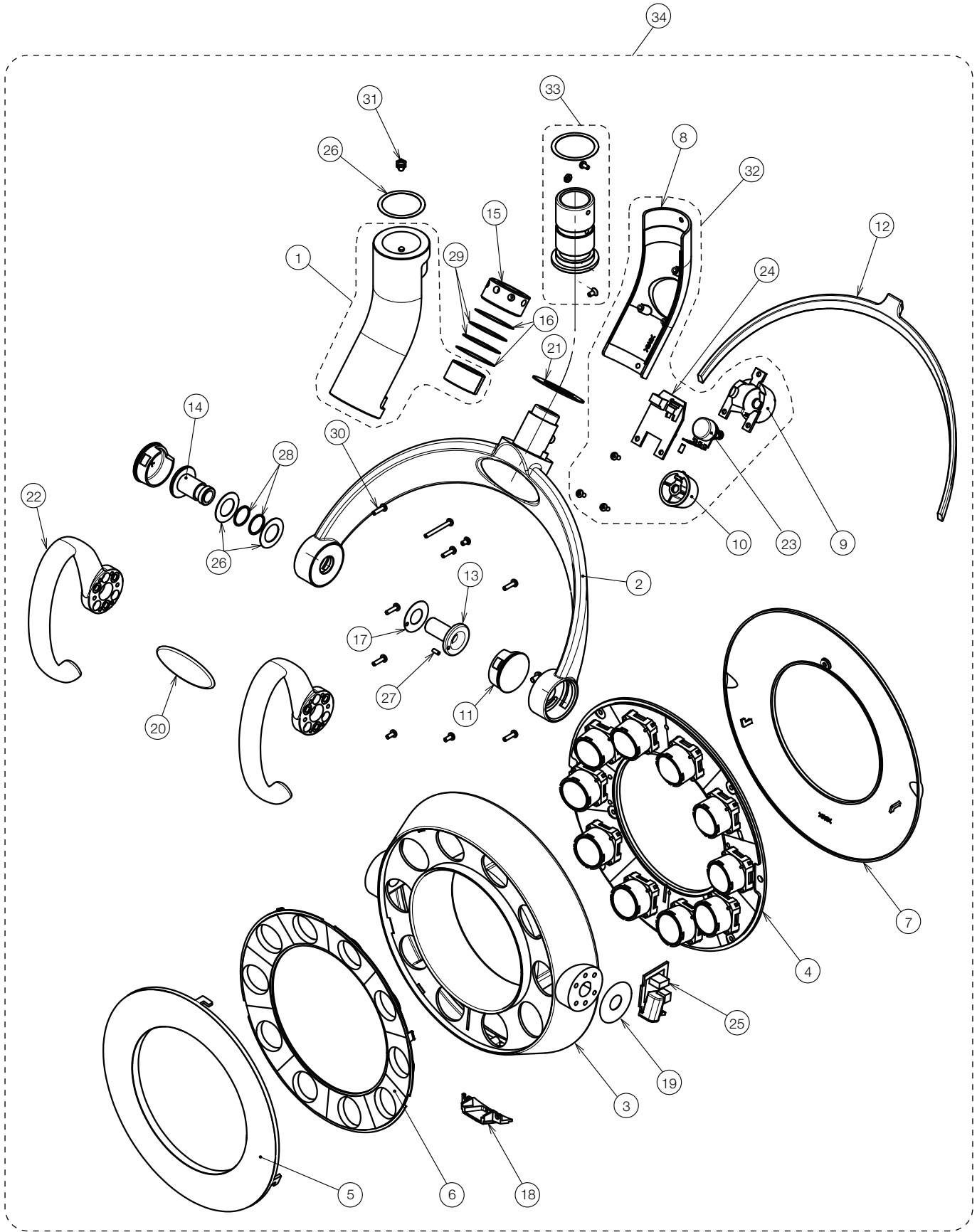


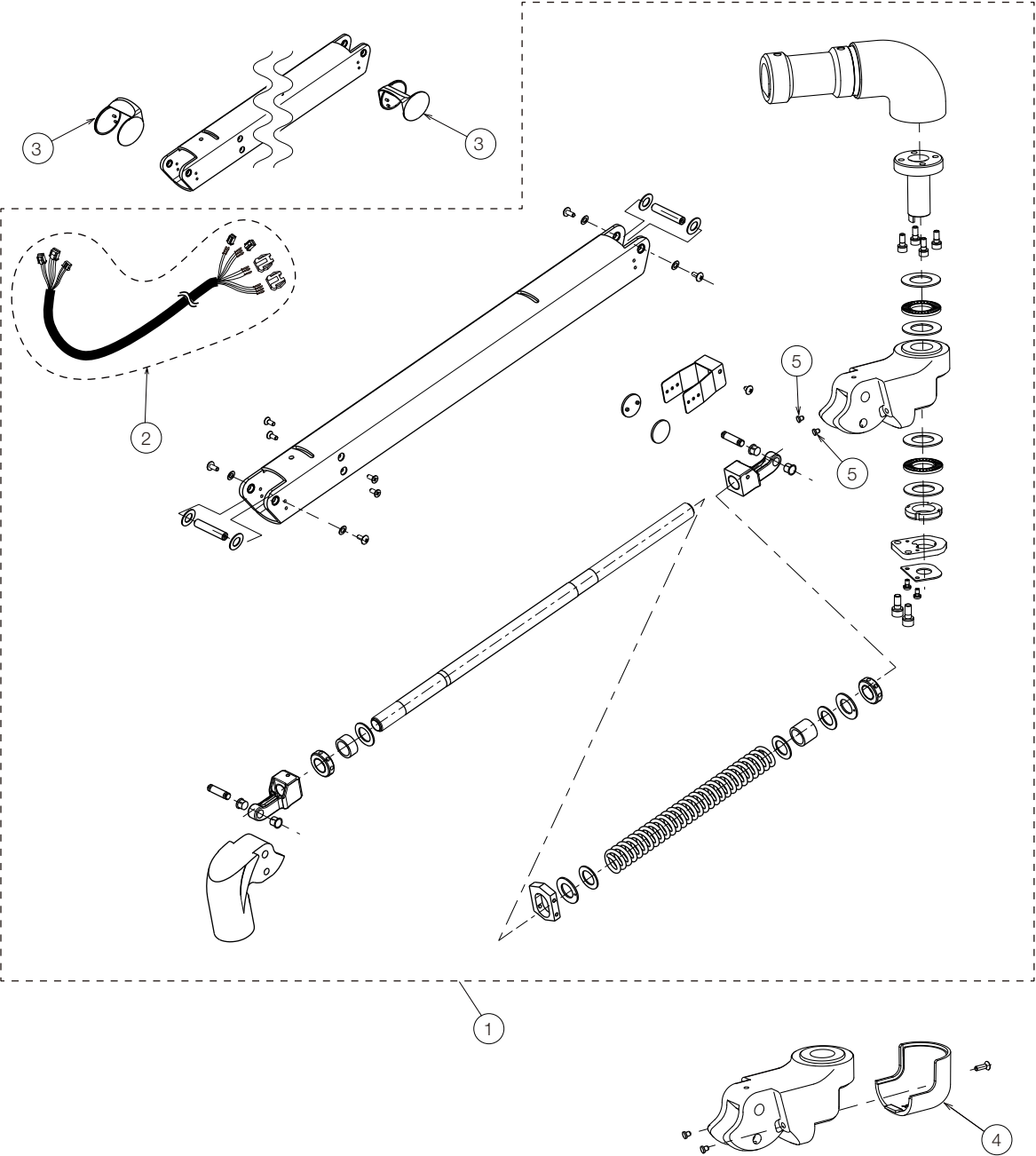
Bel-Halo DENTAL LIGHT
PARTS LIST
(D240 Series)

TABLE OF CONTENTS

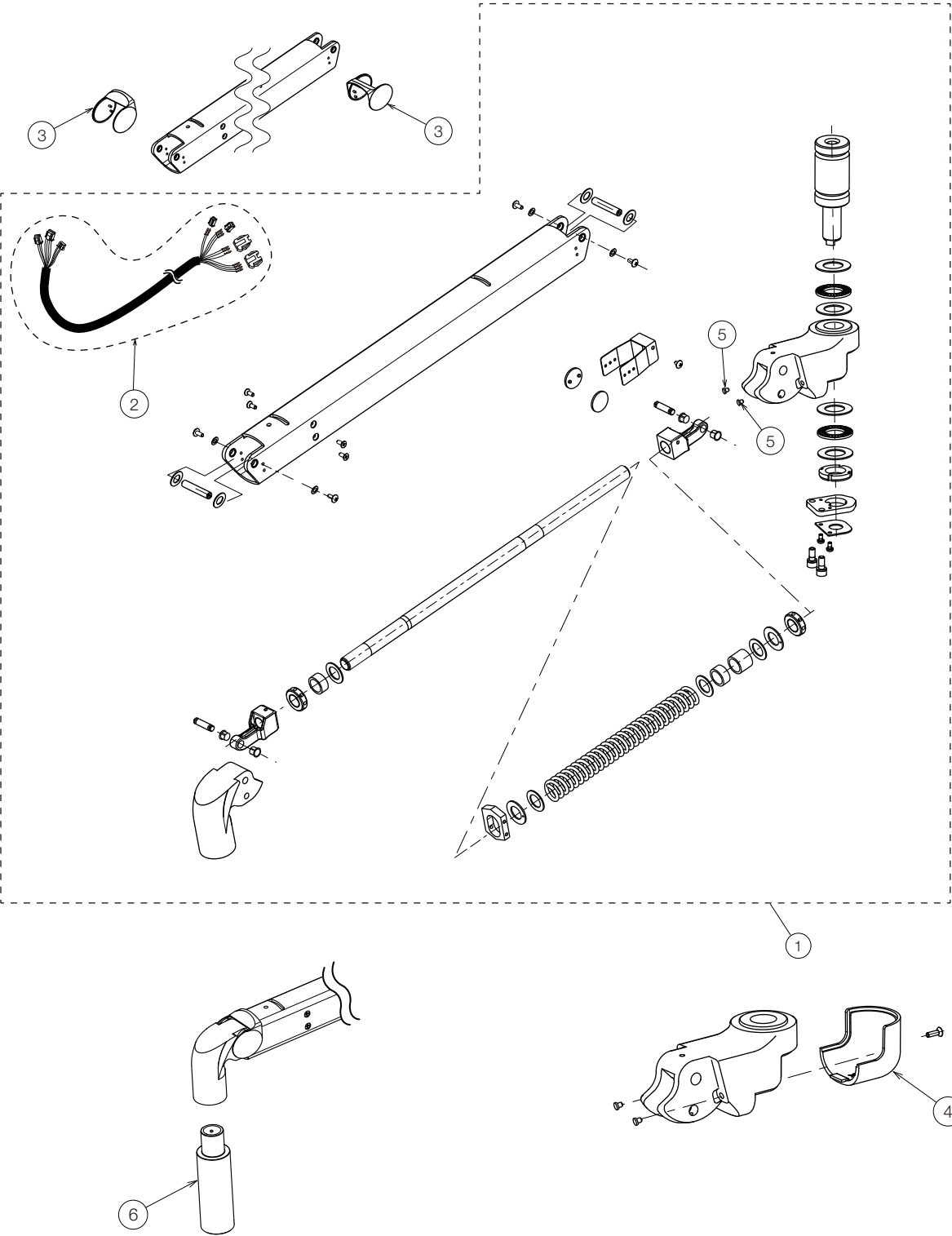
	PAGE
1 . HEAD SECTION -----	4
2 . ARM SECTION (D241, D242) -----	6
3 . ARM SECTION (D245, D247, D248) -----	8
4 . ARM SECTION (D247, D248) -----	10
5 . ARM SECTION (D246G-QU/EV) -----	12
6 . ARM SECTION (D249) -----	14
7 . POWER SUPPLY BOX (D241) -----	16
8 . POWER SUPPLY BOX (D242) -----	18
9 . POWER SUPPLY BOX (D245) -----	20
10 . POWER SUPPLY BOX (D247) -----	22
11 . POWER SUPPLY BOX (D248) -----	24
12 . POWER SUPPLY BOX (D246G-QU) -----	26
13 . SWITCH BOX (D246G-QU)-----	28
14 . TRANSFORMER BOX SECTION (D246G-EV, D249) -----	30
15 . SWITCH BOX (D246G-EV, D249W-X)-----	32
16 . SWITCH BOX (D249W-XN)-----	34
17 . TROLLEY AND RAIL SECTION (D245) -----	36
18 . CEILING POLE SECTION (D242) -----	38
 WIRING DIAGRAM	
1 . AL-D241G / AL-D241W -----	40
2 . AL-D242G -----	41
3 . AL-D245G -----	42
4 . AL-D247G -----	43
5 . AL-D248G -----	44
6 . AL-D246G-QU-----	45
7 . AL-D246G-EV / AL-D249W-X*-----	46
8 . AL-D246G-EV-----	47



NO.	PARTS NO.	DESCRIPTION	QTY	APPLICABLE SERIAL NO.	NOTE
1	1P03KQA0	YOKE WITH BUSH (CN-80)	1		
	1P034FA0	YOKE WITH BUSH (RAL9003)			
2	1P03GFA0	SECOND YOKE WITH ROLL PIN (CN-80)	1		
	1P03M3A0	SECOND YOKE WITH ROLL PIN (RAL9003)			
3	1A0WFYA0	OUTER FRAME COVER (CN-80)	1		
	1A0WFXA0	OUTER FRAME (RAL9003)			
4	1G095TA0	LED MODULE	1		
5	1A07JHB0	LENS COVER	1		
6	1A07JJA0	REFLECTOR	1		
7	1A07JKA0	OUTER FRAME COVER (CN-80)	1		
	1A081NA0	OUTER FRAME COVER (RAL9003)			
8	1A07JLA0	YOKE COVER (CN-80)	1		
	1A081MA0	YOKE COVER (RAL9003)			
9	1A07JMB0	LED DISPLAY COVER	1		
10	1A07JNC0	VOLUME GRIP	1		
11	1A07JPB0	YOKE CAP (CN-80)	2		
12	1A07JQA0	YOKE PACKING (CN-80)	1		
13	1A07JRB0	HEAD ROTATION SHAFT (FIXED)	1		
14	1A07JSB0	HEAD ROTATION YOKE SHAFT(ADJUSTMENT)	1		
15	1A07JTB0	NUT FOR PATTERN ROTATION	1		
16	1A07JUA0	SLIDE WASHER FOR YOKE ROTATION	2		
17	1A07JVA0	SLIDE WASHER FOR HEAD ROTATION SHAFT	1		
18	1A07JWA0	SENSOR COVER	1		
19	1A07JYA0	SLIDE WASHER	1		
20	1A0829B0	BELMONT LOGO LABEL	1		
21	1A07K0A0	PLATE FOR PATTERN ROTATION	1		
22	1A07L6B0	HANDLE (CN-80)	2		
23	1A07M9A0	VOLUME PART OF INTENSITY CONTROL WITH HARNESS	1		
24	1G027ZC0	LED DISPLAY PCB	1		
25	1G027TD0	SENSOR PCB ASSY	1		
26	CAHC89A0	WASHER 24x14.2x0.5	2		
27	CEFN35A0	ROLE PIN WAVEFORM M2.5x6 SUS	1		
28	CEIA10A0	WAVE WASHER	2		
29	CENX96A0	WAVE WASHER	2		
30	ZA111JPY	PAN HEAD SEMS SCREW M3x8 CHROME	7		
31	CAGP69B0	YOKE STOP SCREW	1		
32	1G027VA0	YOKE COVER ASSY (CN-80)	1		
	1G02E1A0	YOKE COVER ASSY (RAL9003)			
33	CGGN66A0	YOKE SHAFT SET	1		
34	1P072GA0	LIGHT HEAD ASSY (CN-80)	1		
	1P072FA0	LIGHT HEAD ASSY (RAL9003)			

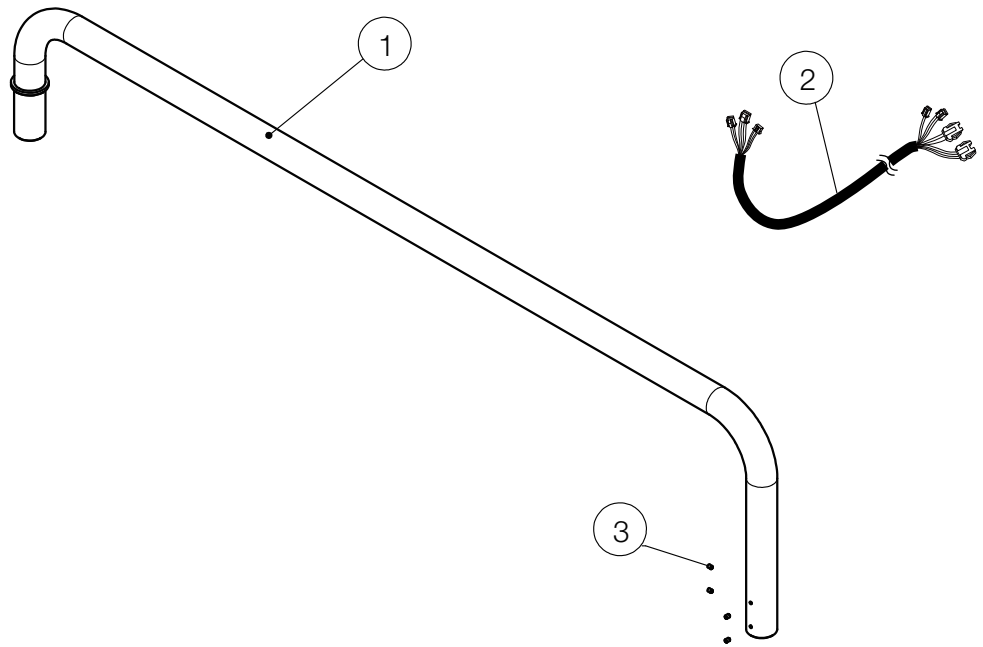


NO.	PARTS NO.	DESCRIPTION	QTY	APPLICABLE SERIAL NO.	NOTE
1	1P078EA0	BALANCE ARM ASSY FOR POST/CEILING MOUNT TYPE (CN-80)	1		
	1P078FA0	BALANCE ARM ASSY FOR POST/CEILING MOUNT TYPE (RAL9003)			
2	1A087KA0	LIGHT CABLE IN ARM (D241/D242)	1		
3	CARA01A0	ROTATION PART COVER	2		
4	1A07K8A0	JOINT COVER (CN-80)	1		
	1A0821A0	JOINT COVER (RAL9003)			
5	CAMP65A0	LARGE STOPPER (6 NYLON)	2		

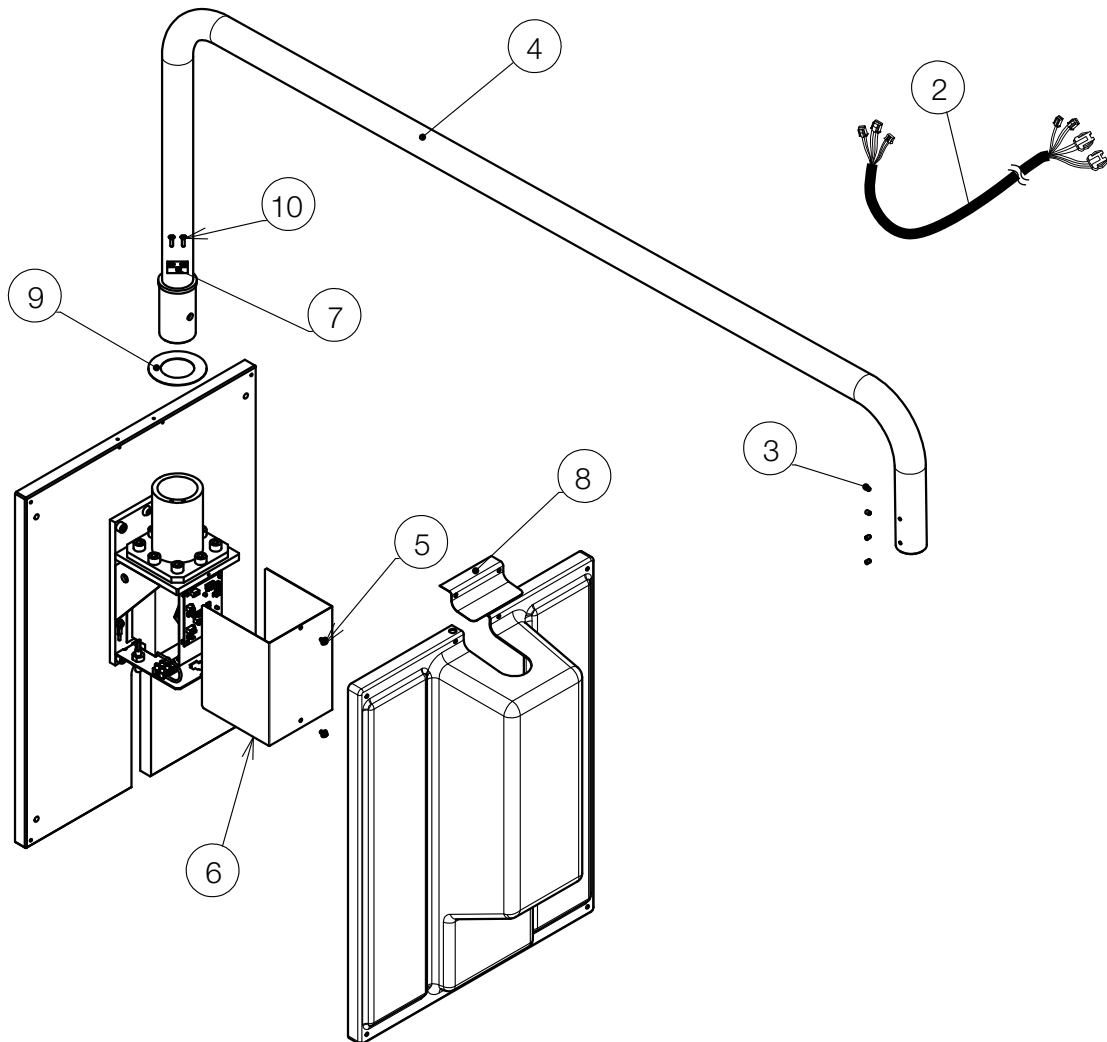


NO.	PARTS NO.	DESCRIPTION	QTY	APPLICABLE SERIAL NO.	NOTE
1	1P039QA0	BALANCE ARM ASSY (CN-80)	1		
2	1A087SA0	LIGHT CABLE IN ARM	1		
3	CARA01A0	ROTATION PART COVER	2		
4	1A07K8A0	JOINT COVER (CN-80)	1		
5	CAMP65A0	LARGE STOPPER (6 NYLON)	2		
6	1A084SB0	EXTENSION (CN-80)	1		

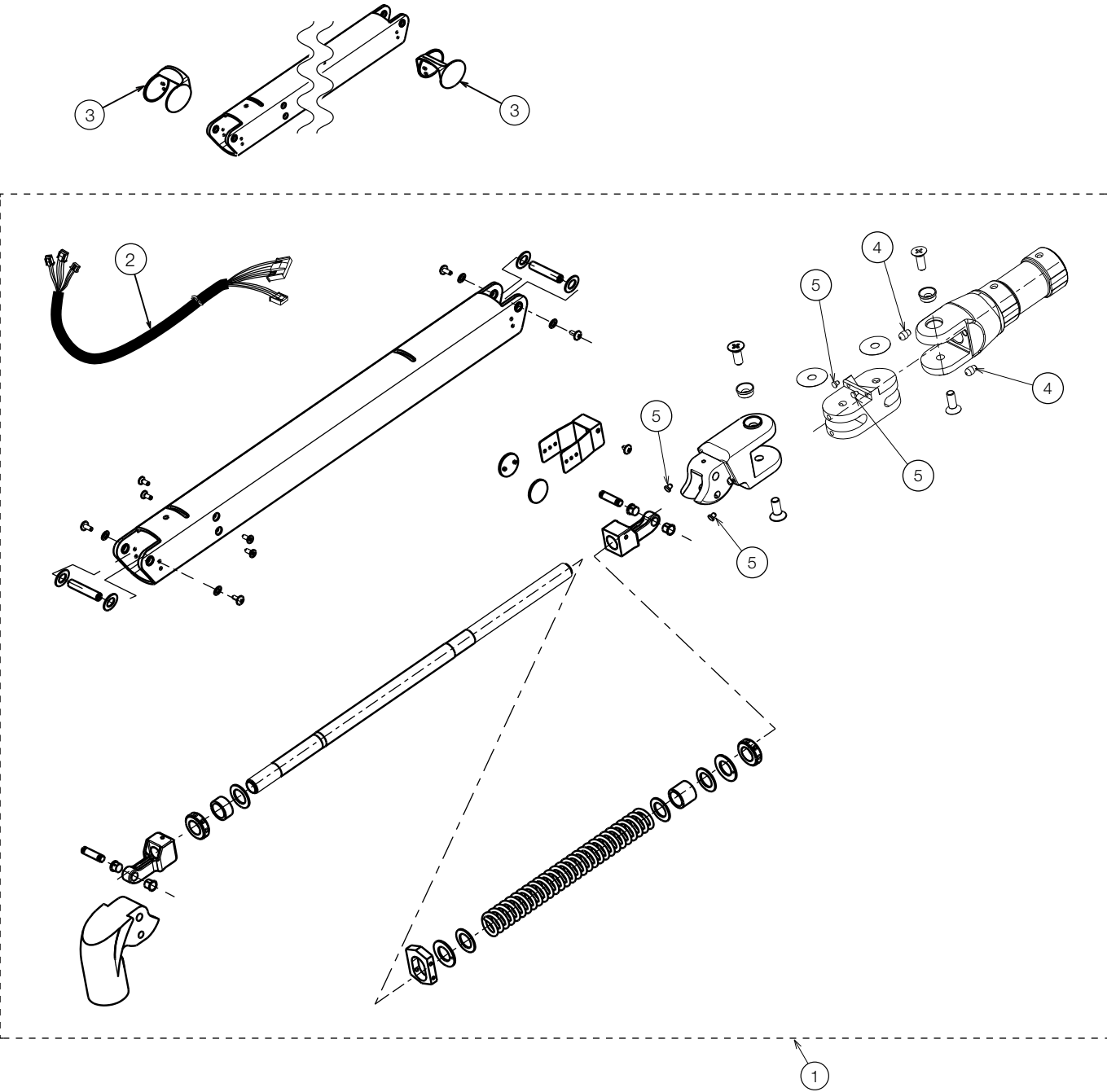
FOR D247



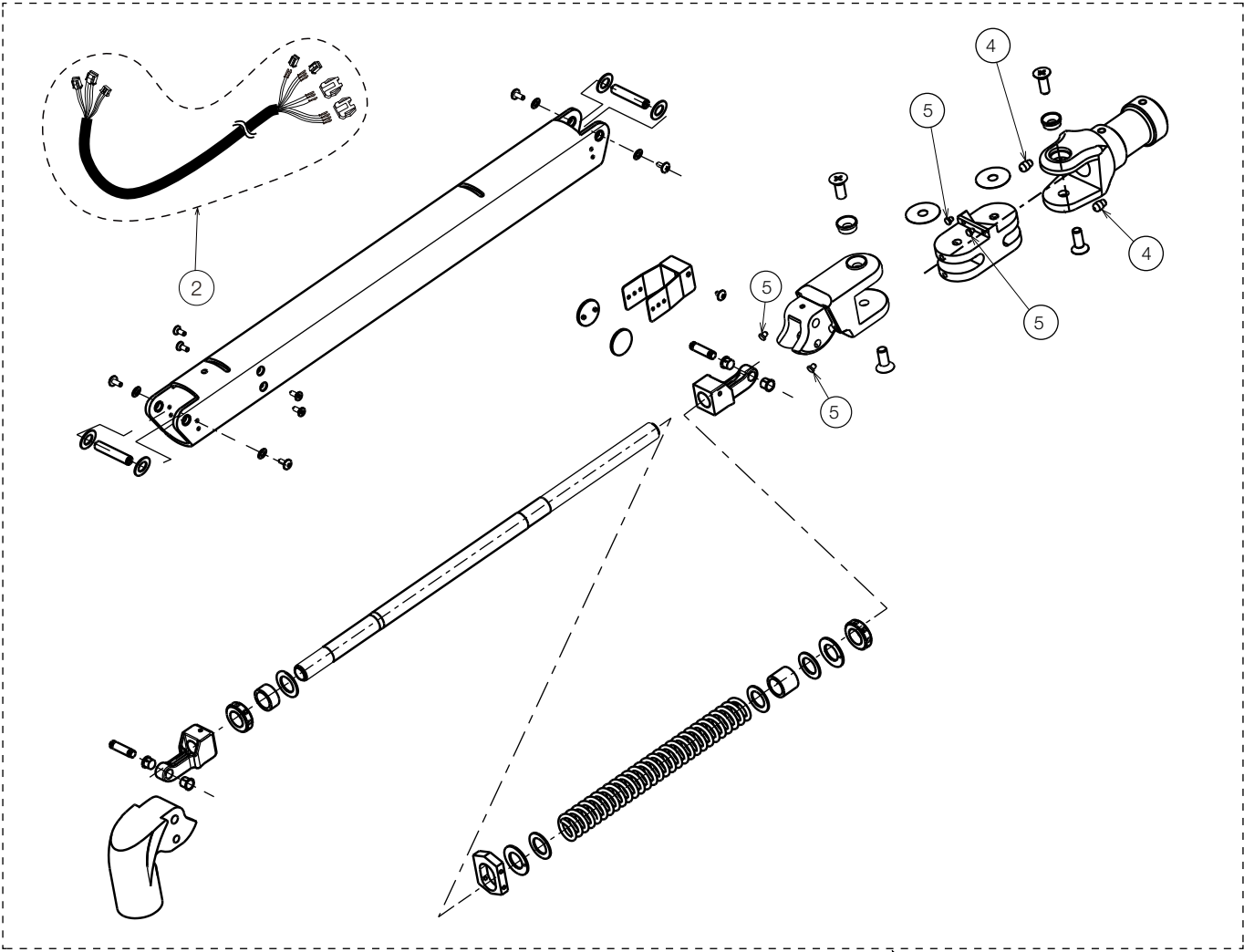
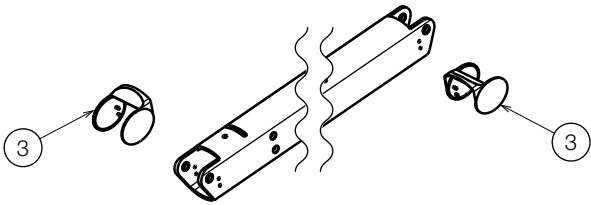
FOR D248



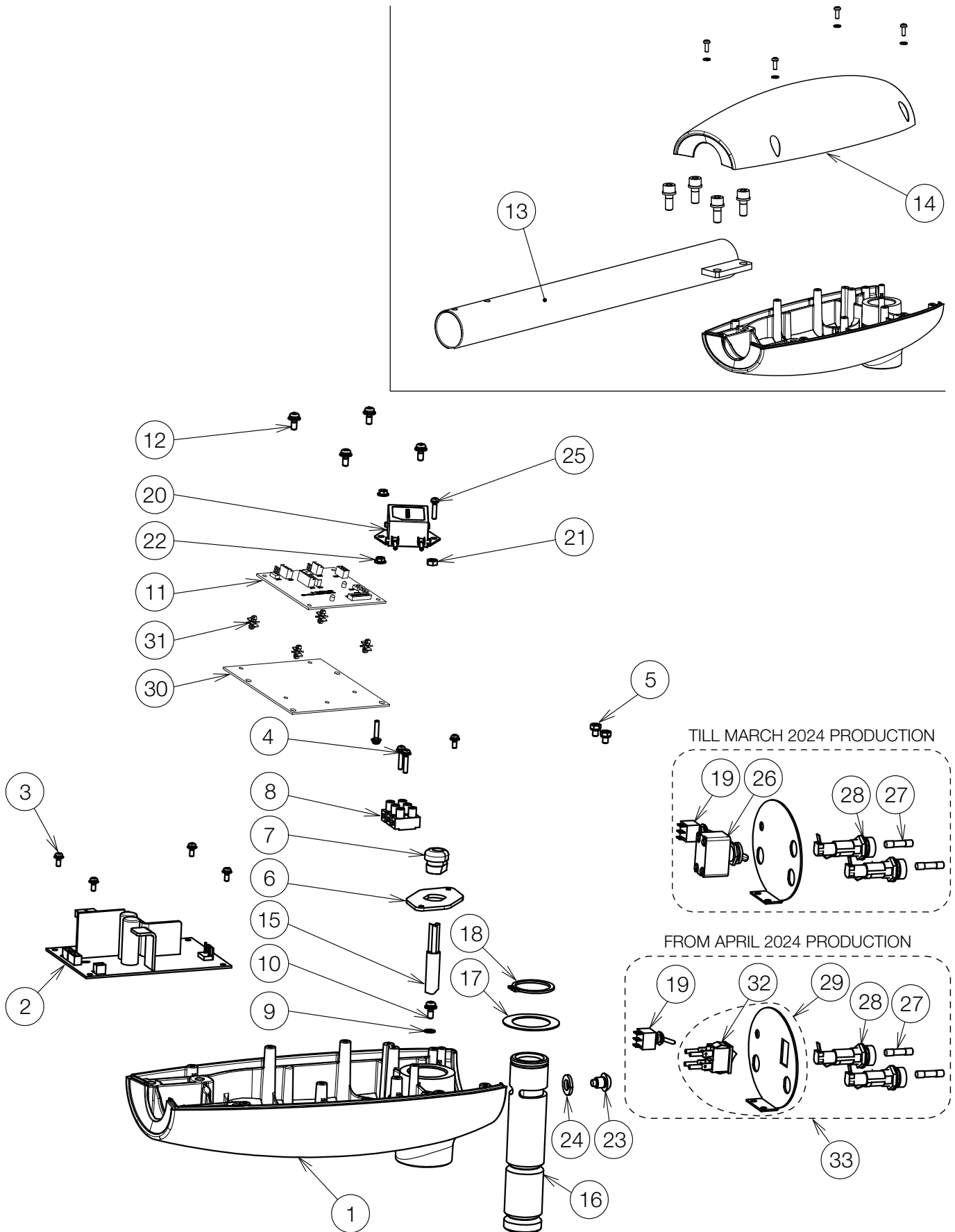
NO.	PARTS NO.	DESCRIPTION	QTY	APPLICABLE SERIAL NO.	NOTE
1	1A0AH6A0	LIGHT POLE FOR CABINET MOUNT(CN-80)	1		
2	1A09GUB0	LIGHT CABLE IN ARM (D247)	1		
	1A09GNA0	LIGHT CABLE IN ARM (D248)			
3	ZA772NPY	HEX SOCKET SET SCREW M5X8 CHROME	4		
4	1A0ALVA0	LIGHT POLE FOR WALL MOUNT (CN-80)	1		
5	ZA88JLPY	PAN HEAD SEMS SCREW 3P M4X8 CHROME	2		
6	CATP03B0	COVER FOR BRACKET	1		
7	CATP04A0	RETAINER METAL	1		
8	1A0ALZA0	FRONT TOP COVER	1		
9	CATN92A0	POLE DISK	1		
10	ZA112L#U	FLAT HEAD SCREW M4X15 SUS	2		



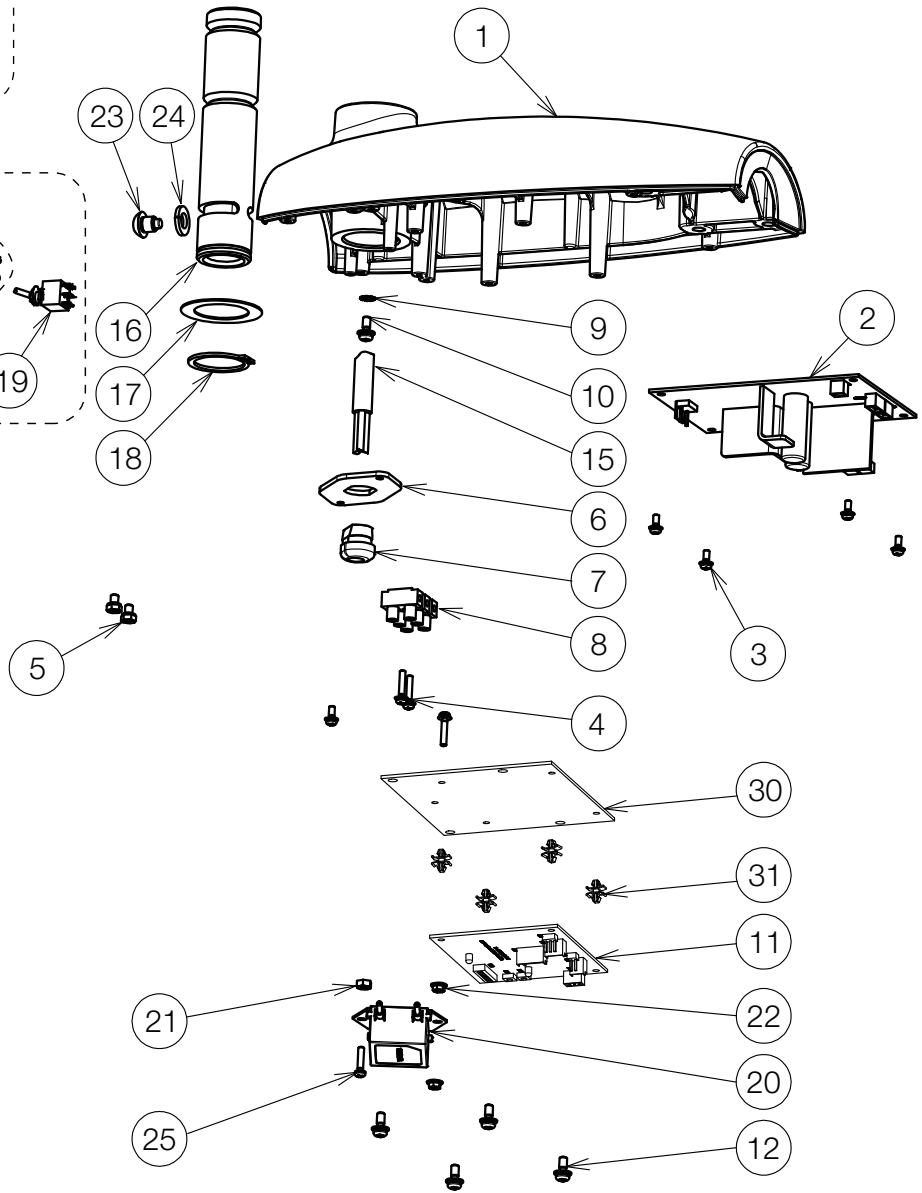
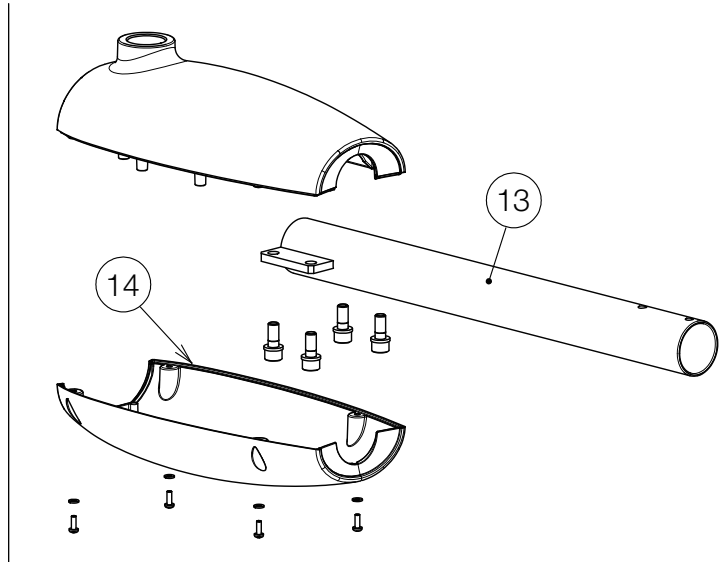
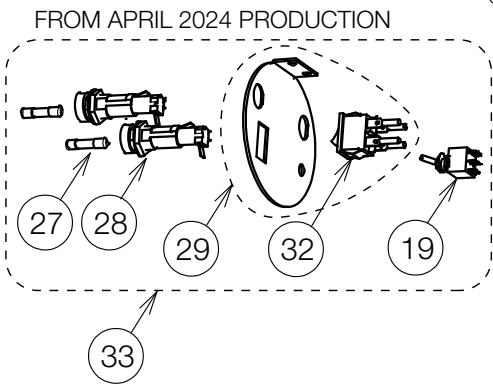
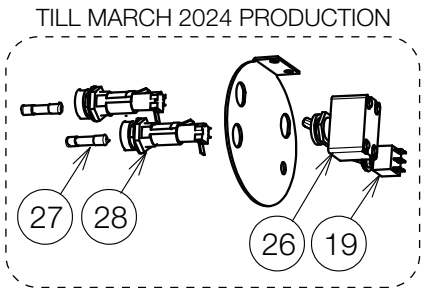
NO.	PARTS NO.	DESCRIPTION	QTY	APPLICABLE SERIAL NO.	NOTE
1	1P078BA0	BALANCE ARM ASSY FOR UNIT MOUNT TYPE D246G-QU (CN-80)	1		FOR QUOLIS
	1P078CA0	BALANCE ARM ASSY FOR UNIT MOUNT TYPE D246G-EV (CN-80)			FOR EVOGUE
2	1A086VA0	LIGHT CABLE IN ARM FOR D246G-QU	1		FOR QUOLIS
	1A089TB0	LIGHT CABLE IN BALANCE ARM FOR D246G-EV/ D249W-X,XN			FOR EVOGUE
3	CARA01A0	ROTATION PART COVER	2		
4	CATP10A0	STOPPER RL L=7.5 (6 NYLON)	2		
5	CAMP65A0	LARGE STOPPER (6 NYLON)	4		



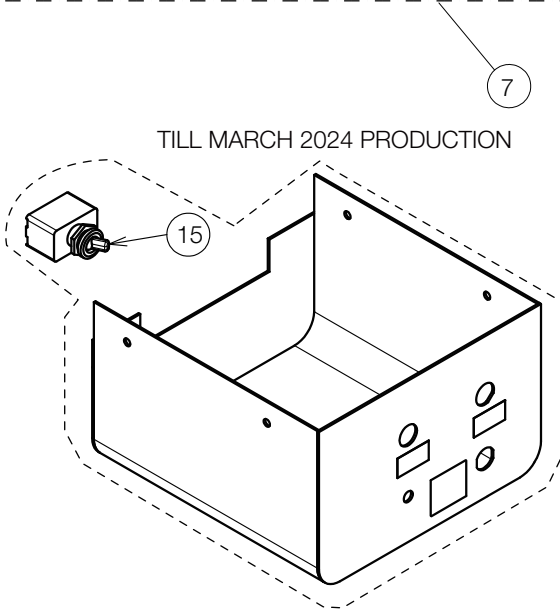
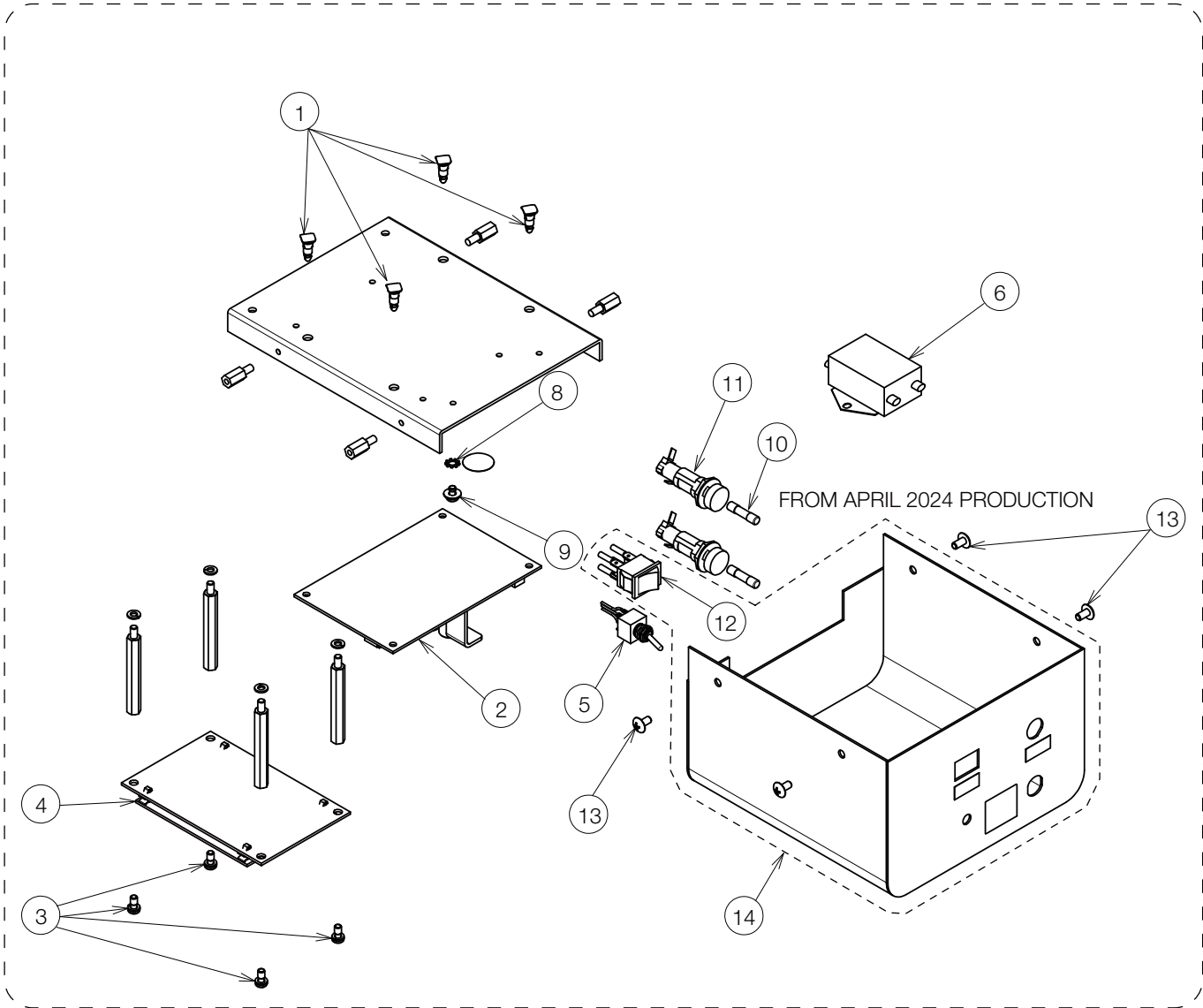
NO.	PARTS NO.	DESCRIPTION	QTY	APPLICABLE SERIAL NO.	NOTE
1	1P078DA0	BALANCE ARM ASSY FOR UNIT MOUNT TYPE (RAL9003)	1		FOR X-CALIBUR
2	1A089TB0	LIGHT CABLE IN BALANCE ARM FOR D246G-EV/ D249W-X,XN	1		
3	CARA01A0	ROTATION PART COVER	2		
4	CATP10A0	STOPPER RL L=7.5 6 NYLON	2		
5	CAMP65A0	LARGE STOPPER (6 NYLON)	4		



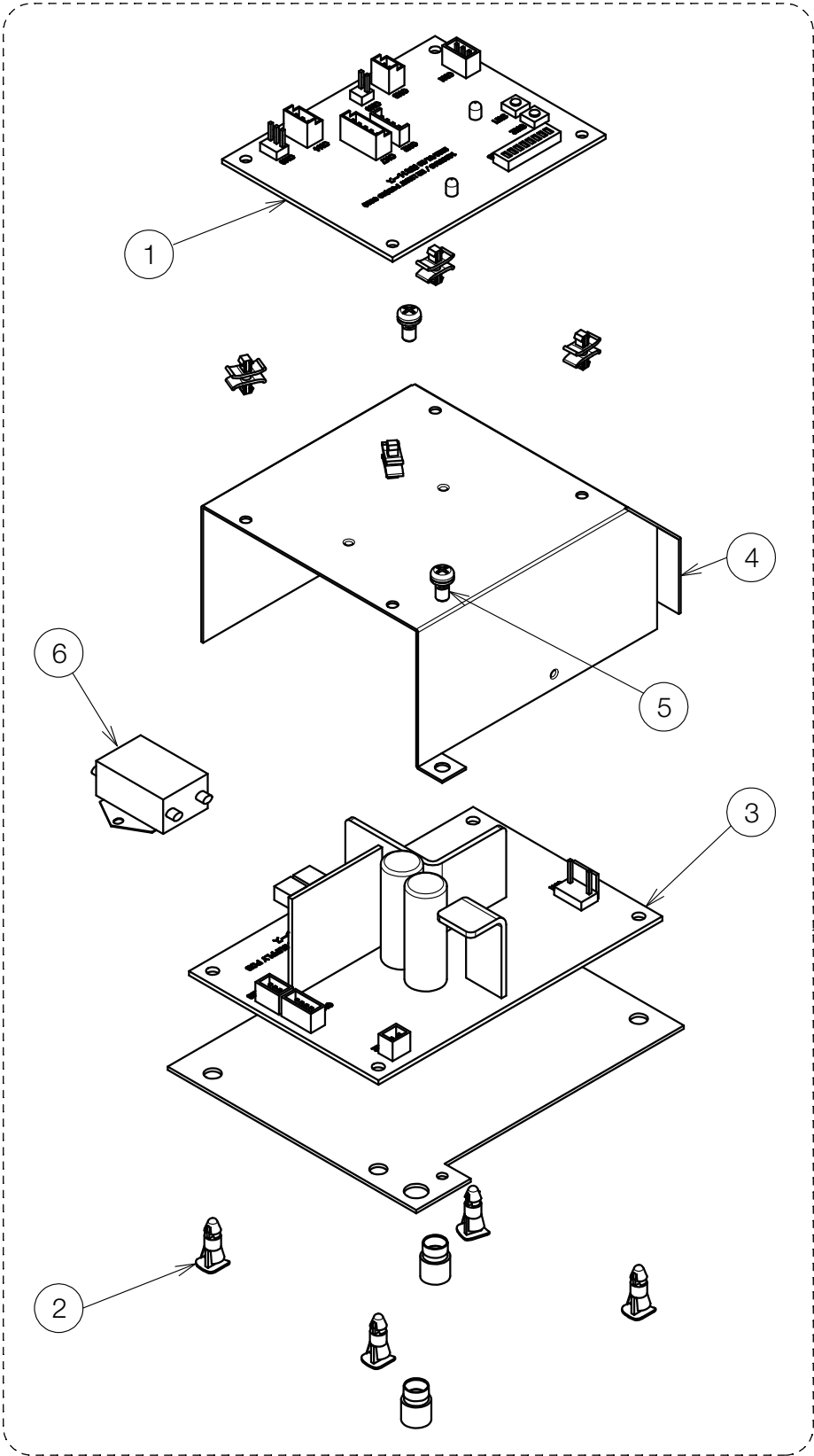
NO.	PARTS NO.	DESCRIPTION	QTY	APPLICABLE SERIAL NO.	NOTE
1	1A07PGA0	TRANSFORMER BOX (CN-80)	1		
	1A082HA0	TRANSFORMER BOX (RAL9003)			
2	1G08K8A0	SWITCHING POWER PCB	1		
3	ZA88JJPY	PAN HEAD SEMS SCREW 3P M3x8 CHROME	5		
4	ZA88JJUY	PAN HEAD SEMS SCREW 3P M3x16 CHROME	3		
5	1E00UKA0	UPSET HEAD BOLT 2P M4X6 CHROME	2		
6	CADQ35A0	CODE BUSH PANEL (70)	1		
7	CEGN46A0	CODE BUSH	1		
8	CAML90B0	CODE HOOK TERMINAL BLOCK	1		
9	ZB552LAY	EXTERNAL TOOTH WASHER M4 CHROME	1		
10	ZA88JLRL	PAN HEAD SEMS SCREW	1		
11	1G0803E0	LIGHT CONTROL PCB	1		
12	ZA88JLRY	PAN HEAD SEMS SCREW 3P M4x10 CHROME	4		
13	1A07PLA0	SWIVEL ARM (CN-80)	1		
14	1A07PHA0	TRANSFORMER BOX COVER (CN-80)	1		
	1A082JA0	TRANSFORMER BOX COVER (RAL9003)			
15	1A0XNAA0	POWER CODE	1		
16	1A07W1B0	ROTATION SHAFT	1		
17	CAND32A0	WASHER 43X29X0.8	1		
18	CENX94A0	C-RING	1		
19	1A0ZV0A0	SENSOR/MANUAL MODE SWITCH ASSY WITH WIRE	1		PREVIOUS CODE: 1A0STYB0
20	1G0A33A0	NOISE FILTER	1		TILL MARCH 2024 PRODUCTION
	1G0ASLA0	NOISE FILTER			FROM APRIL 2024 PRODUCTION
21	ZA812LAY	HEX NUT M4 CHROME	1		
22	ZA901JAY	FLANGE NUT M3 CHROME	2		
23	1A07W2A0	ROTATION STOPPER BOLT M8	1		
24	ZB511PAY	SPRING WASHER M8 CHROME	1		
25	ZA887JTY	PAN HEAD SEMS SCREW 2P M3x14 CHROME	1		
26	-	DISCONTINUED. FOR REPLACEMENT, PLEASE ORDER NO.29.	1		TILL MARCH 2024 PRODUCTION
27	CEEN94A0	FUSE 250V 0.8A (T)	2		
28	AEFR93B0	FUSE HOLDER 250V-10A	2		
29	1P080EA0	ROCKER SWITCH WITH PLATE AND HARNESS (D241/CN80)	1		TILL MARCH 2024 PRODUCTION
	1P080DA0	ROCKER SWITCH WITH PLATE AND HARNESS (D241/RAL9003)			
30	1A0XGTA0	BRACKET FOR CONTROL PCB	1		
31	CERN39A0	DOUBLE LOCKING SPACER	4		
32	1E09JTA0	ROCKER SWITCH	1		FROM APRIL 2024 PRODUCTION
33	1G09CRA0	BACK PLATE ASSY FOR ROCKER SWITCH SPEC. (D241) (CN80)	1		FROM APRIL 2024 PRODUCTION
	1G09CTA0	BACK PLATE ASSY FOR ROCKER SWITCH SPEC. (D241) (RAL9003)			



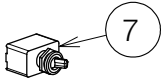
NO.	PARTS NO.	DESCRIPTION	QTY	APPLICABLE SERIAL NO.	NOTE
1	1A07PGA0	TRANSFORMER BOX (CN-80)	1		
2	1G08K8A0	SWITCHING POWER PCB	1		
3	ZA88JJPY	PAN HEAD SEMS SCREW 3P M3x8 CHROME	5		
4	ZA88JJUY	PAN HEAD SEMS SCREW 3P M3x16 CHROME	3		
5	1E00UKA0	UPSET HEAD BOLT 2P M4X6 CHROME	2		
6	CADQ35A0	CODE BUSH PANEL (70)	1		
7	CEGN46A0	CODE BUSH	1		
8	CAML90B0	CODE HOOK TERMINAL BLOCK	1		
9	ZB552LAY	EXTERNAL TOOTH WASHER M4 CHROME	1		
10	ZA88JLRL	PAN HEAD SEMS SCREW 3P M4x10 BS	1		
11	1G0803E0	LIGHT CONTROL PCB	1		
12	ZA88JLRY	PAN HEAD SEMS SCREW 3P M4x10 CHROME	4		
13	1A07PLA0	SWIVEL ARM (CN-80)	1		
14	1A07PHA0	TRANSFORMER BOX COVER (CN-80) *COATED	1		
15	1A0XNBA0	POWER CORD	1		
16	1A07W1B0	ROTATION SHAFT	1		
17	CAND32A0	WASHER 43X29X0.8	1		
18	CENX94A0	C-RING	1		
19	1A0ZV0A0	SENSOR/MANUAL MODE SWITCH ASSY WITH WIRE	1		PREVIOUS CODE: 1A0STYB0
20	1G0A33A0	NOISE FILTER	1		TILL MARCH 2024 PRODUCTION
	1G0ASLA0	NOISE FILTER			FROM APRIL 2024 PRODUCTION
21	ZA812LAY	HEX NUT M4X0.7	1		
22	ZA901JAY	FLANGE NUT M3 CHROME	2		
23	1A07W2A0	ROTATION STOPPER BOLT M8	1		
24	ZB511PAY	SPRING WASHER M8 CHROME	1		
25	ZA887JTY	PAN HEAD SEMS SCREW 2P M3x14 CHROME	1		
26	-	DISCONTINUED. FOR REPLACEMENT, PLEASE ORDER NO.29.	1		TILL MARCH 2024 PRODUCTION
27	CEEN94A0	FUSE 250V 0.8A (T)	2		
28	AEFR93B0	FUSE HOLDER 250V-10A	2		
29	1P080FA0	ROCKER SWITCH WITH PLATE AND HARNESS (D242/RAL9003)	1		TILL MARCH 2024 PRODUCTION
30	1A0XGTA0	BRACKET FOR CONTROL PCB	1		
31	CERN39A0	DOUBLE LOCKING SPACER	4		
32	1E09JTA0	ROCKER SWITCH	1		FROM APRIL 2024 PRODUCTION
33	1G09CWA0	BACK PLATE ASSY FOR ROCKER SWITCH SPEC. (D242) (CN80)	1		FROM APRIL 2024 PRODUCTION



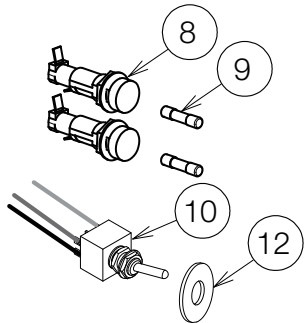
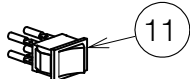
NO.	PARTS NO.	DESCRIPTION	QTY	APPLICABLE SERIAL NO.	NOTE
1	DESR05A0	SPACER	4		
2	1G08K8A0	SWITCHING POWER PCB	1		
3	ZA887LPY	PAN HEAD SEMS SCREW 2P M4x8 CHROME	8		
4	1G0803E0	LIGHT CONTROL PCB	1		
5	1A0ZV0A0	SENSOR/MANUAL MODE SWITCH ASSY WITH WIRE	1		PREVIOUS CODE: 1A0STYB0
6	1G0ASMA0	NOISE FILTER ASSY	1		
7	1G09CYA0	POWER SUPPLY BOX ASSY	1		FROM APRIL 2024 PRODUCTION
8	ZB552LAY	EXTERNAL TOOTH WASHER M4 CHROME	1		
9	ZA88JLNM	PAN HEAD SEMS SCREW 3P M4x6 BSNI	1		
10	CEEN94A0	FUSE 250V 0.8A (T)	2		
11	AEFR93B0	FUSE HOLDER 250V-10A	2		
12	1E09JTA0	ROCKER SWITCH	1		FROM APRIL 2024 PRODUCTION
13	1E01HHA0	TRUSS M4X8 RAL9003	4		
14	1P080GA0	ROCKER SWITCH WITH BOX AND HARNESS (D245)	1		TILL MARCH 2024 PRODUCTION
15	-	DISCONTINUED. FOR REPLACEMENT, PLEASE ORDER NO.14.	1		TILL MARCH 2024 PRODUCTION



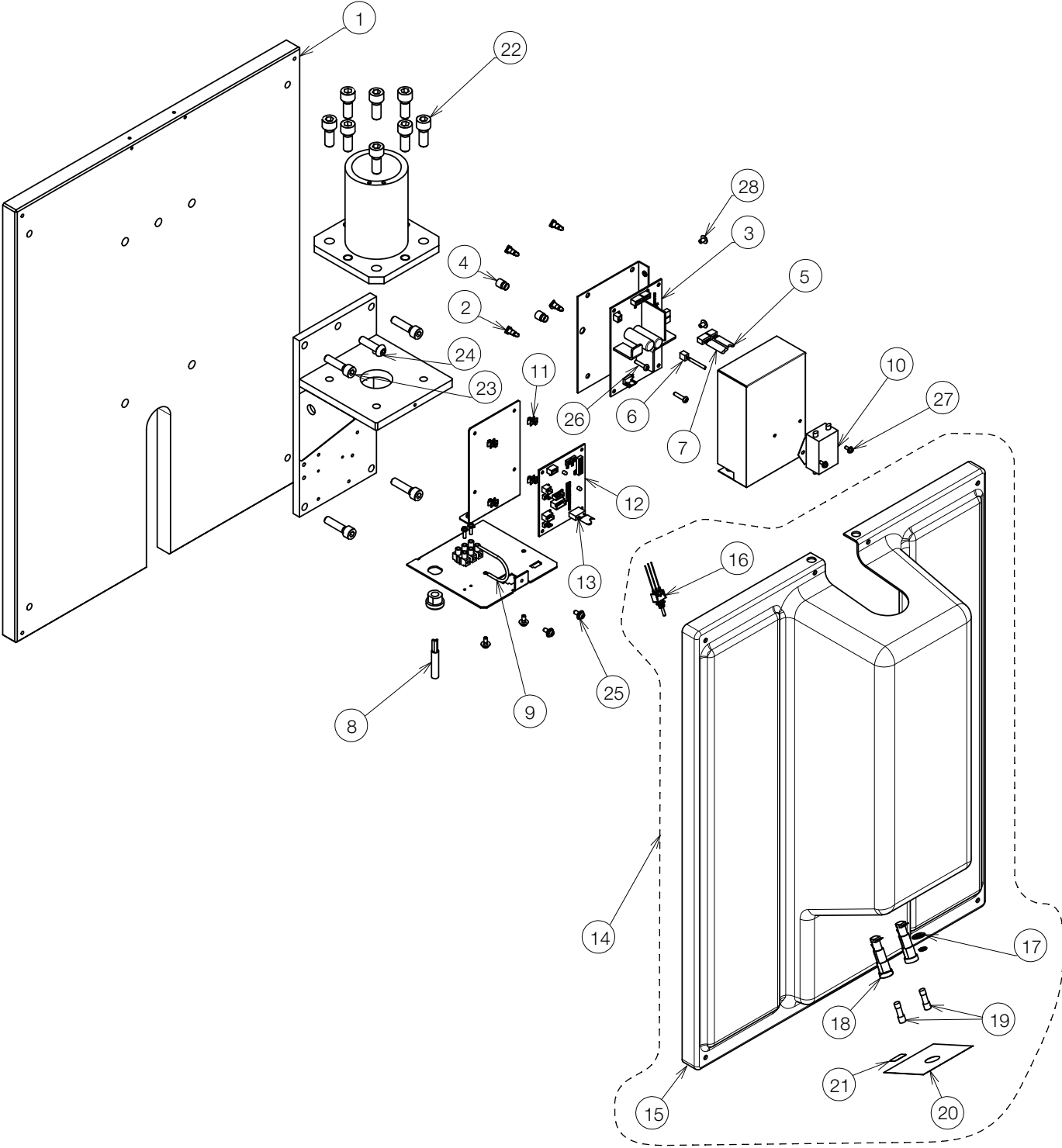
TILL DECEMBER 2024
PRODUCTION



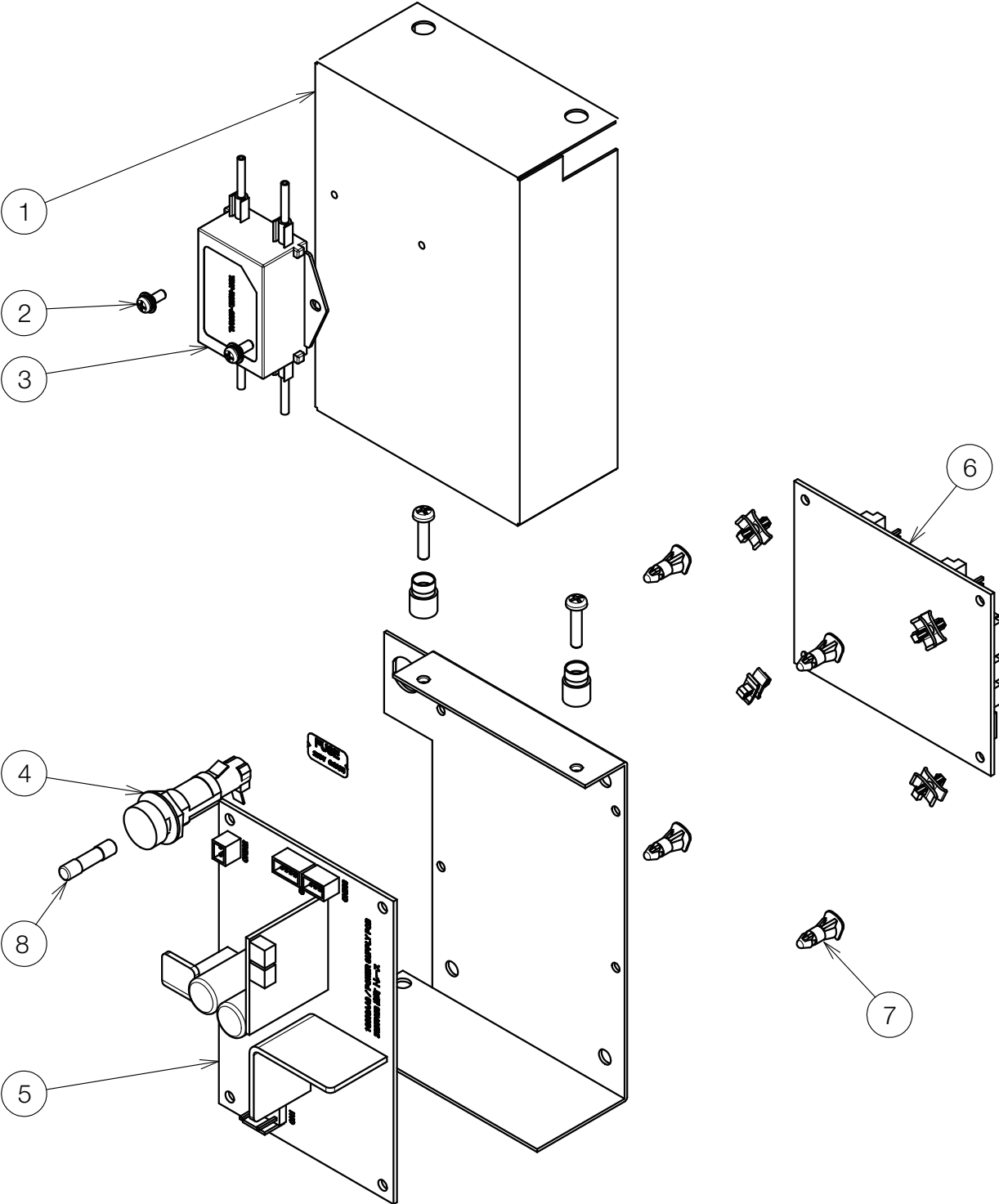
FROM JANUARY 2025
PRODUCTION



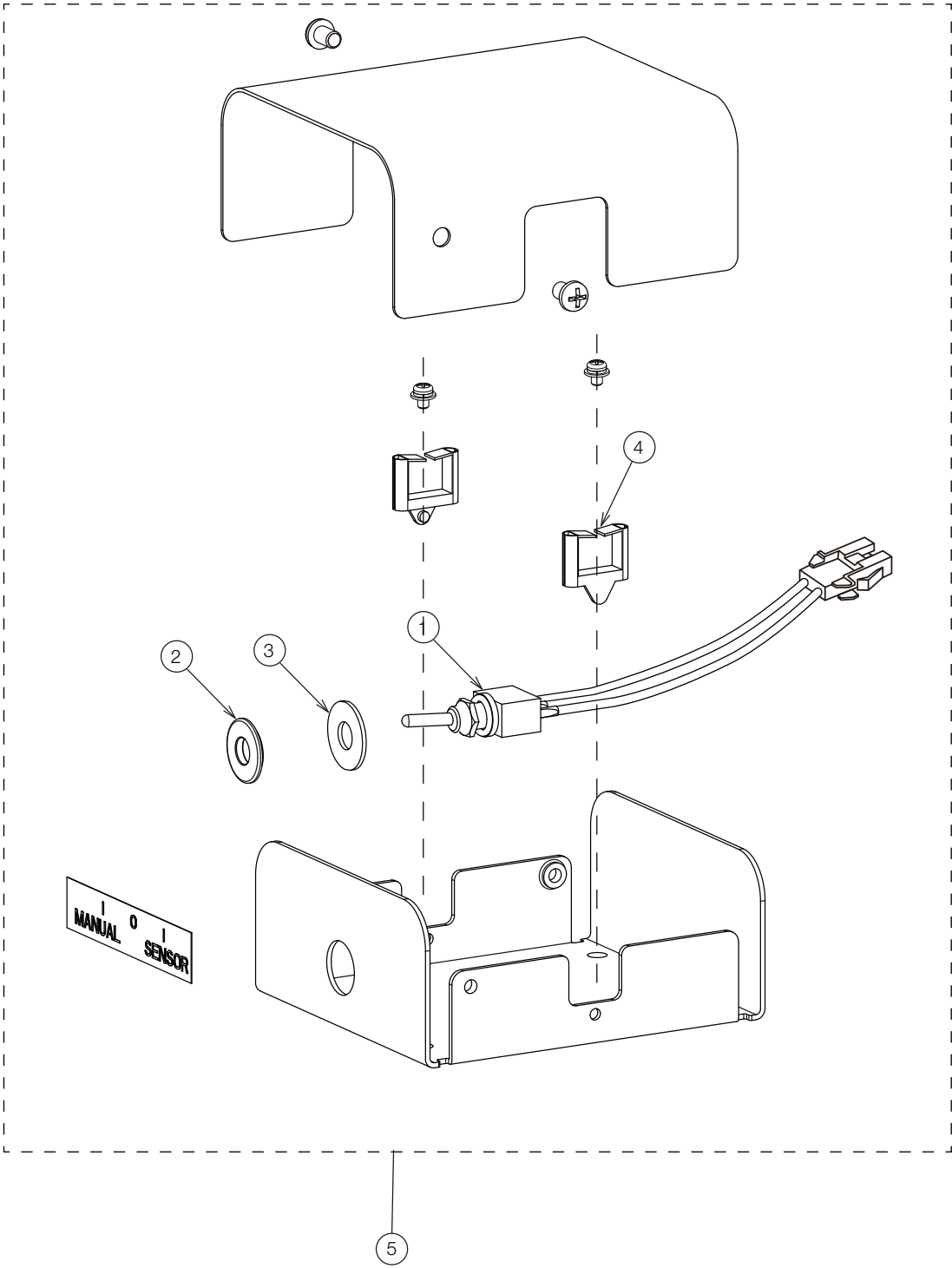
NO.	PARTS NO.	DESCRIPTION	QTY	APPLICABLE SERIAL NO.	NOTE
1	1G0803E0	LIGHT CONTROL PCB	1		
2	DESR05A0	SPACER	4		
3	1G08K8A0	SWITCHING POWER PCB	1		
4	1A07X1E0	COVER FOR POWER PCB	1		
5	ZA887LPY	PAN HEAD SEMS SCREW 2P M4X8 CHROME	2		
6	1G0ASNA0	NOISE FILTER ASSY WITH WIRE	1		PREVIOUS CODE: 1G0A3VA0
7	CENX56B0	MAIN SWITCH	1		TILL DECEMBER 2024 PRODUCTION
8	AEFR93B0	FUSE HOLDER	2		
9	CEEN94A0	FUSE 250V 0.8A (T)	2		
10	1A0SU4A0	SENSOR/MANUAL SWITCH ASSY	1		
11	1E09JTA0	ROCKER SWITCH	1		FROM JANUARY 2025 PRODUCTION
12	1A07PYC0	SPACER FOR SENSOR/MANUAL MODE SWITCH	1		
13	1G09RXA0	POWER PCB BOX (D247)	1		



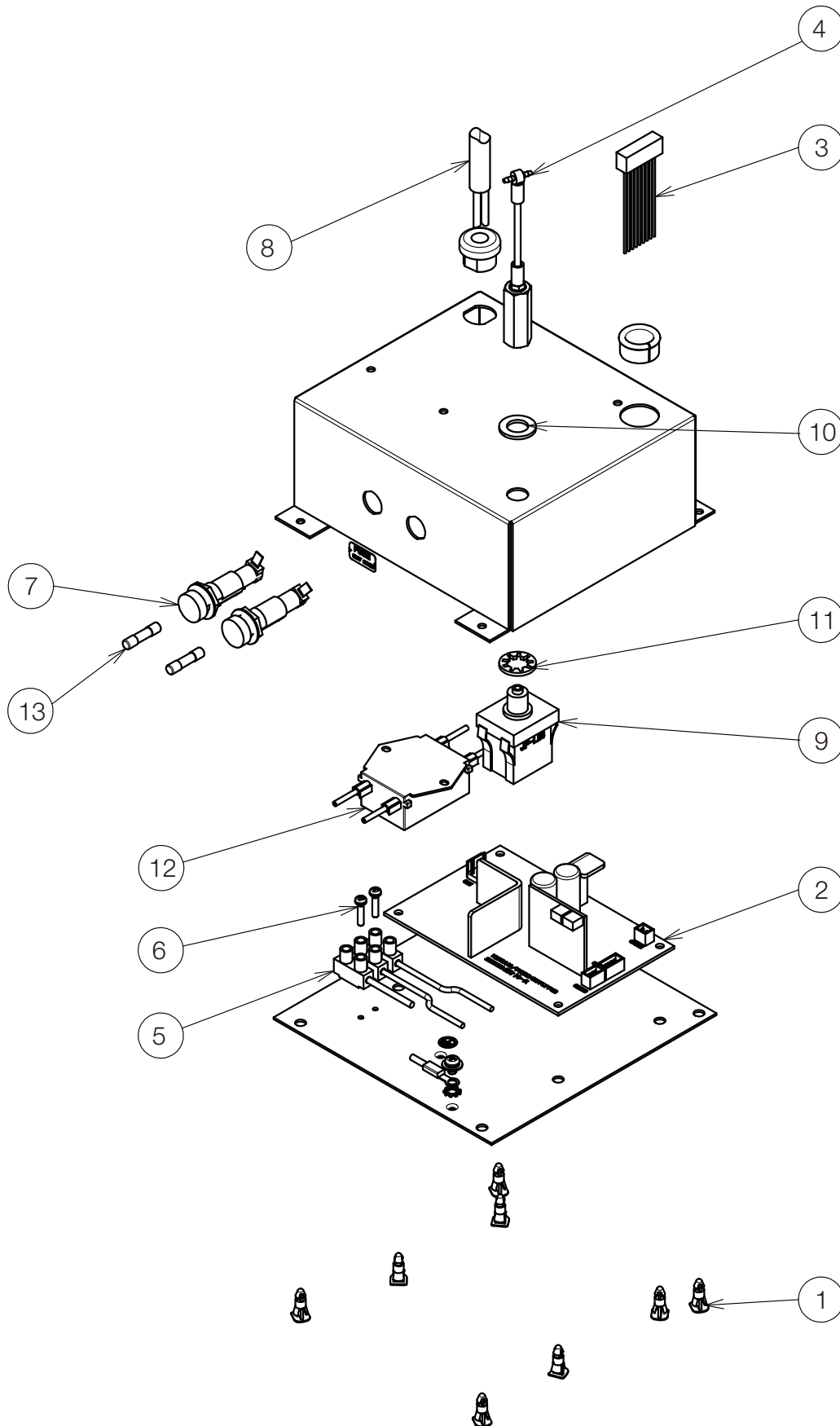
NO.	PARTS NO.	DESCRIPTION	QTY	APPLICABLE SERIAL NO.	NOTE
1	1A0QB3A0	WALL PLATE FOR EPA	1		
2	DESR05A0	SPACER	4		
3	1G08K8A0	SWITCHING POWER PCB	1		
4	1E02FBA0	SNAP COLOR BUSH	2		
5	1A0STXA0	TRUNK LINE FOR ADJUST PULSE	1		
6	1A07MPA0	TRUNK LINE A FOR CONTROL PCB	1		
7	1A07MRA0	TRUNK LINE FOR LED MODULE	1		
8	1A04CZA0	CT CODE 2000L	1		
9	1A04CXA0	EARTH WIRE 200L	1		
10	1G0A3DA0	NOISE FILTER ASSY	1		
11	CERN39A0	SPACER	4		
12	1G0803E0	LIGHT CONTROL PCB	1		
13	1A0SU8A0	TRUNK LINE A FOR SENSOR/MANUAL SWITCH	1		
14	1G0827A0	FRONT COVER SET (CN80)	1		
15	1A0ALYA0	FRONT COVER (CN80)	1		
16	1A0SU9A0	SENSOR/MANUAL MODE SWITCH ASSY WITH WIRE	1		
17	1A07PYC0	SPACER FOR SENSOR/MANUAL SWITCH	1		
18	AEFR93B0	FUSE HOLDER 250V-10A	2		
19	CEEN94A0	FUSE 250V 0.8A (T)	2		
20	CATP11C0	LABEL FOR SENSOR/MANUAL MODE SWITCH	1		
21	CAEP84B0	FUSE LABEL 0.8 A (T)	1		
22	ZA761QYU	HEX SOCKET HEAD SCREW M10x25 SUS	8		
23	CETN56A0	HEX SOCKET HEAD SCREW M8x32 BLACK CHROME	4		
24	ZSA11PZG	HEX BUTTON HEAD SCREW M8x30 BLACK	1		
25	ZA88JLRY	PAN HEAD SEMS SCREW 3P M4x10 CHROME	4		
26	ZA111LUC	PAN HEAD SCREW M4x16 CHROME	2		
27	ZA88JJPY	PAN HEAD SEMS SCREW 3P M3x8 CHROME	2		
28	ZA114LNY	TRUSS M4x6 CHROME	2		



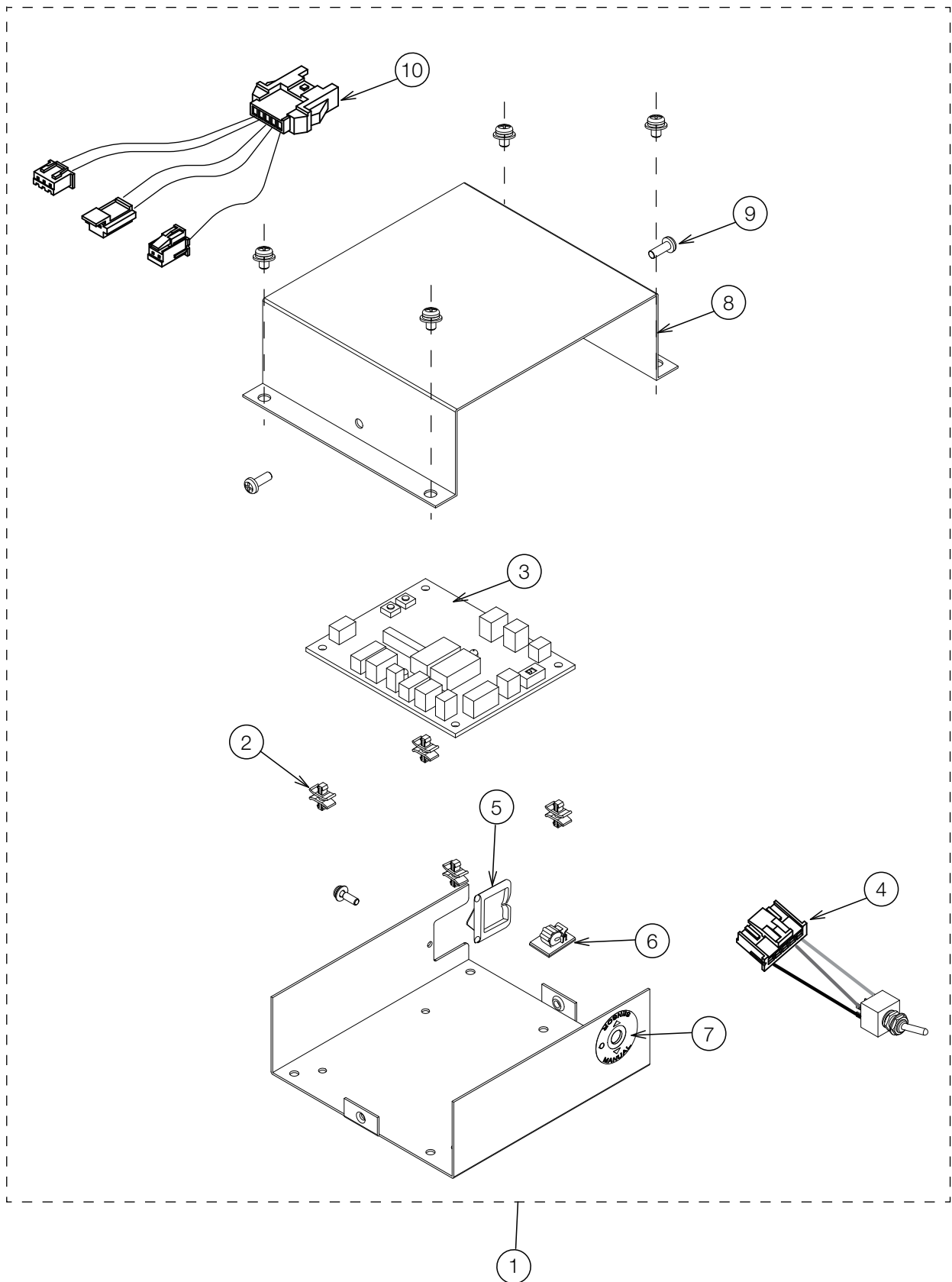
NO.	PARTS NO.	DESCRIPTION	QTY	APPLICABLE SERIAL NO.	NOTE
1	1A07Z9B0	POWER PCB BOX	1		
2	ZA88JJPY	PAN HEAD SEMS SCREW 3P M3x8 CHROME	2		
3	1A08AGC0	NOISE FILTER ASSY	1		
4	AEFR93B0	FUSE HOLDER 250V-10A	1		
5	1G08K8A0	SWITCHING POWER PCB	1		
6	1G07PBE0	LIGHT CONTROL PCB FOR QUOLIS	1		
7	DESR05A0	SPACER	4		
8	CEEN94A0	FUSE 250V 0.8A (T)	1		



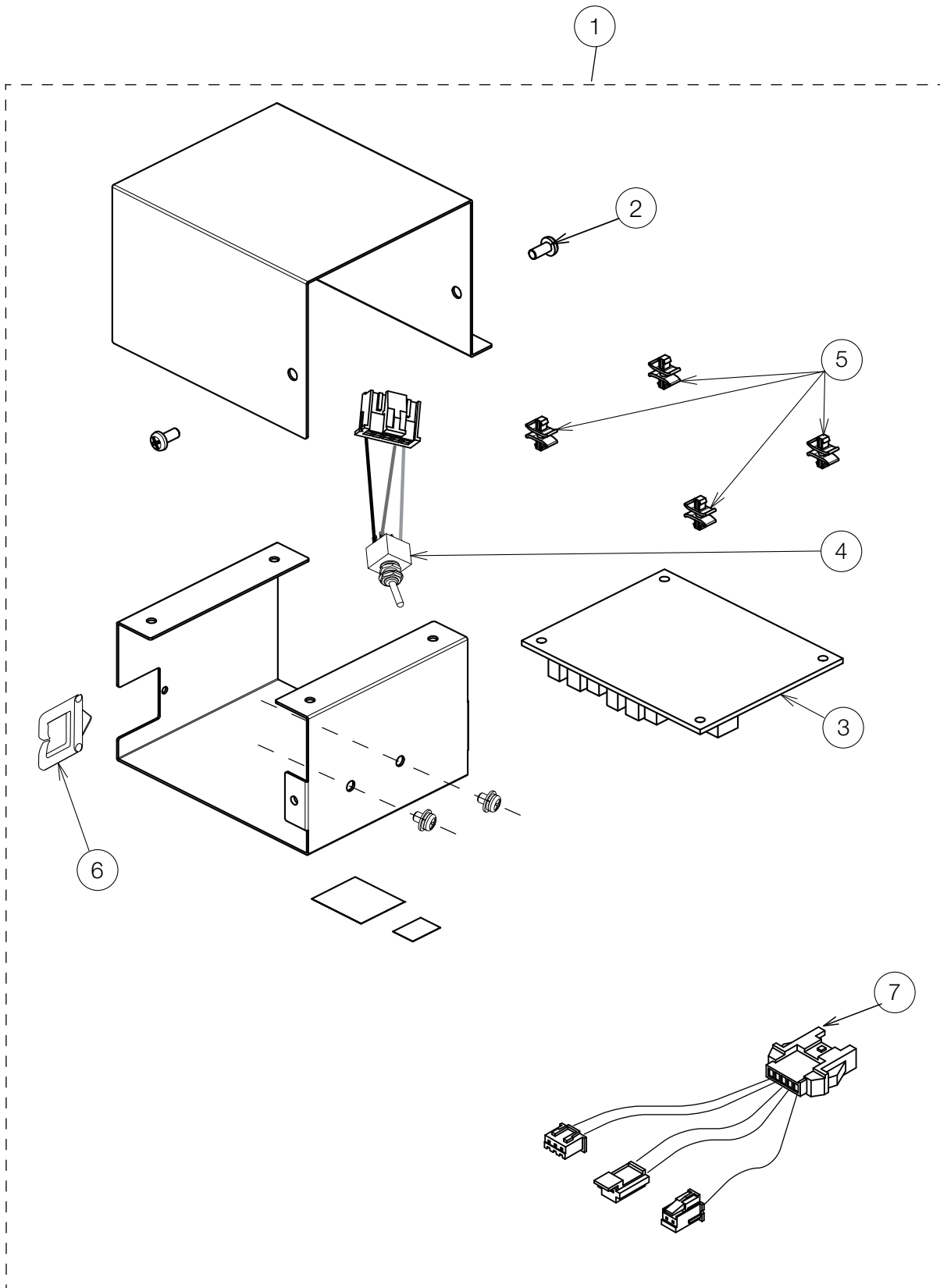
NO.	PARTS NO.	DESCRIPTION	QTY	APPLICABLE SERIAL NO.	NOTE
1	1A086ZA0	SENSOR/MANUAL MODE SWITCH ASSY WITH WIRE	1		
2	1A07PYC0	SPACER FOR SENSOR/MANUAL SWITCH	1		
3	1E00V3A0	WASHER M6x16x1.0 CHROME	1		
4	CEGN75A0	EDGE SADDLE	2		
5	1P081KA0	SWITCH BOX ASSY FOR D246G-QU			



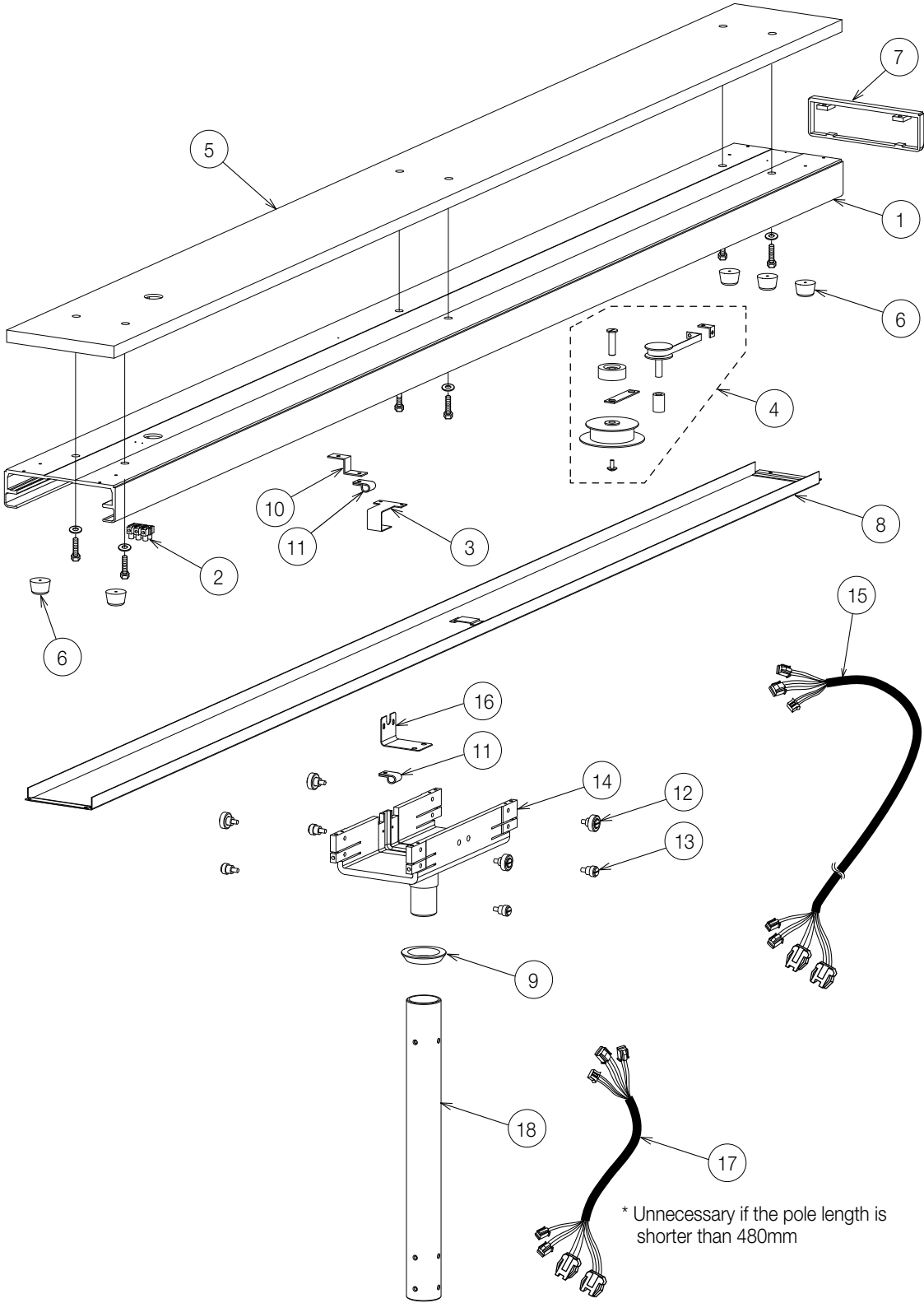
NO.	PARTS NO.	DESCRIPTION	QTY	APPLICABLE SERIAL NO.	NOTE
1	DESR05A0	SPACER	8		
2	1G08K8A0	SWITCHING POWER PCB	1		
3	1A0SUFA0	TRUNK LINE FOR POWER PCB	1		
4	1G02MBA0	AIR SWITCH CYLINDER ASSY WITH TUBING & FITTING	1		
5	1G0A3WA0	TERMINAL BLOCK ASSY	1		
6	ZA887JTY	PAN HEAD SEMS SCREW 2P M4x8 CHROME	2		
7	AEFR93B0	FUSE HOLDER 250V-10A	2		
8	1A10AXA0	CT CODE 1000L	1		PREVIOUS CODE: 1A04D6A0
9	1A0H4TB0	AIR SWITCH	1		
10	1E00A7A0	WASHER M10X22X2.4 CHROME	1		
11	ZB551QAY	INTERNAL TOOTH WASHER M10 CHROME	1		
12	1G0A3UA0	NOISE FILTER ASSY	1		
13	CEEN94A0	FUSE 250V 0.8A (T)	2		



NO.	PARTS NO.	DESCRIPTION	QTY	APPLICABLE SERIAL NO.	NOTE
1	1P081MA0	SWITCH BOX ASSY (RAL9003) FOR D249W-X	1		
	1P081PA0	SWITCH BOX ASSY (CN80) FOR D246G-EV			
2	CERN39A0	DOUBLE LOCKING SPACER	4		
3	1G0803E0	LIGHT CONTROL PCB	1		
4	1A0SUJA0	SENSOR/MANUAL MODE SWITCH ASSY WITH WIRE	1		
5	CETN14A0	EDGE SADDLE FOR CABLE PROTECTION	1		
6	CETN13A0	CLAMP WITH SPONGE	1		
7	1A0HMYA0	LABEL FOR S/M MODE SWITCH	1		
8	CATN46CR	SWITCH BOX COVER (RAL9003)	1		
	1A0HWWA0	SWITCH BOX COVER (CN80)			
9	1E00VTA0	PAN HEAD SEMS SCREW M4x10 RAL9003	2		
	1A033FA0	PAN HEAD SCREW M4x10 CN80			
10	1A0SUHA0	TRUNK LINE FOR ADJUST PULSE	1		

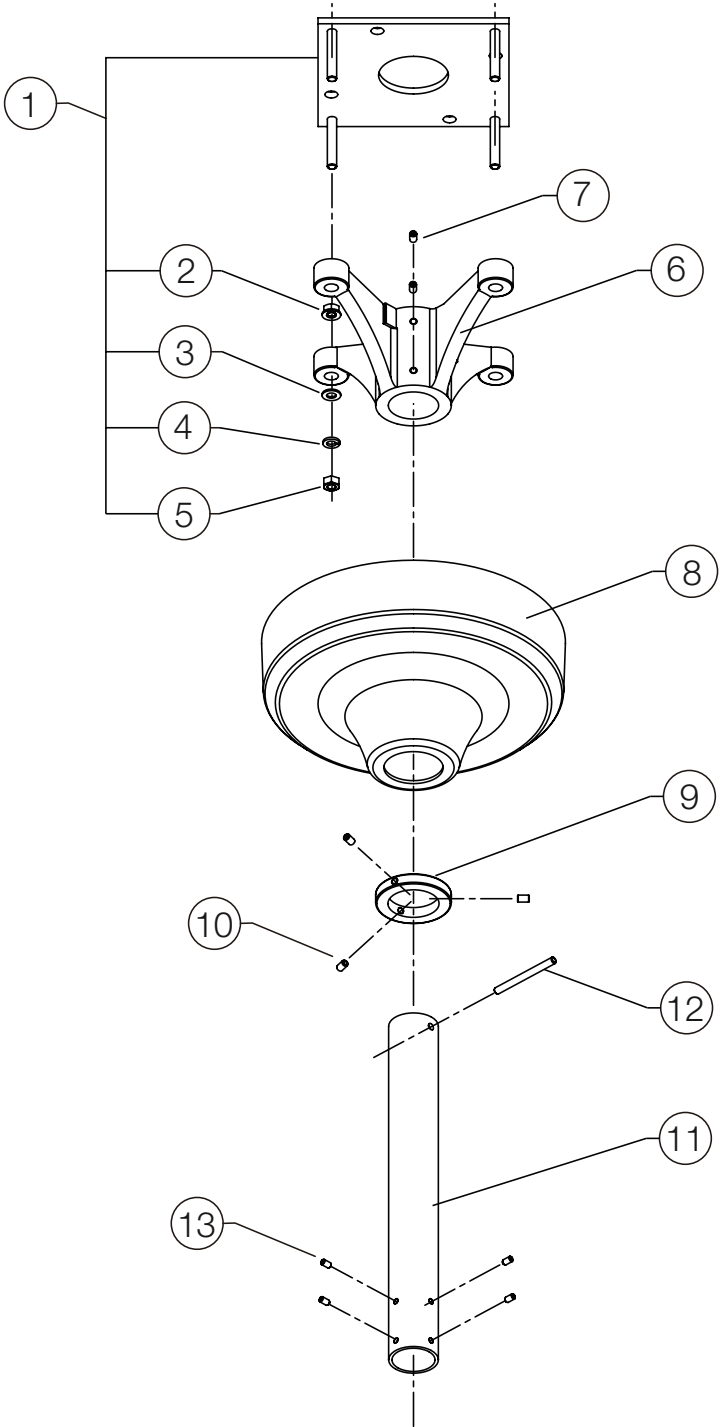


NO.	PARTS NO.	DESCRIPTION	QTY	APPLICABLE SERIAL NO.	NOTE
1	1P081RA0	SWITCH BOX ASSY FOR D249W-XN	1		
2	ZA887LPU	PAN HEAD SEMS SCREW 2P M4x8 SUS	2		
3	1G0803E0	LIGHT CONTROL PCB	1		
4	1A0SUJA0	SENSOR/MANUAL MODE SWITCH ASSY WITH WIRE	1		
5	CERN39A0	DOUBLE LOCKING SPACER	4		
6	CETN14A0	EDGE SADDLE FOR CABLE PROTECTION	1		
7	1A0SUHA0	TRUNK LINE FOR ADJUST PULSE	1		

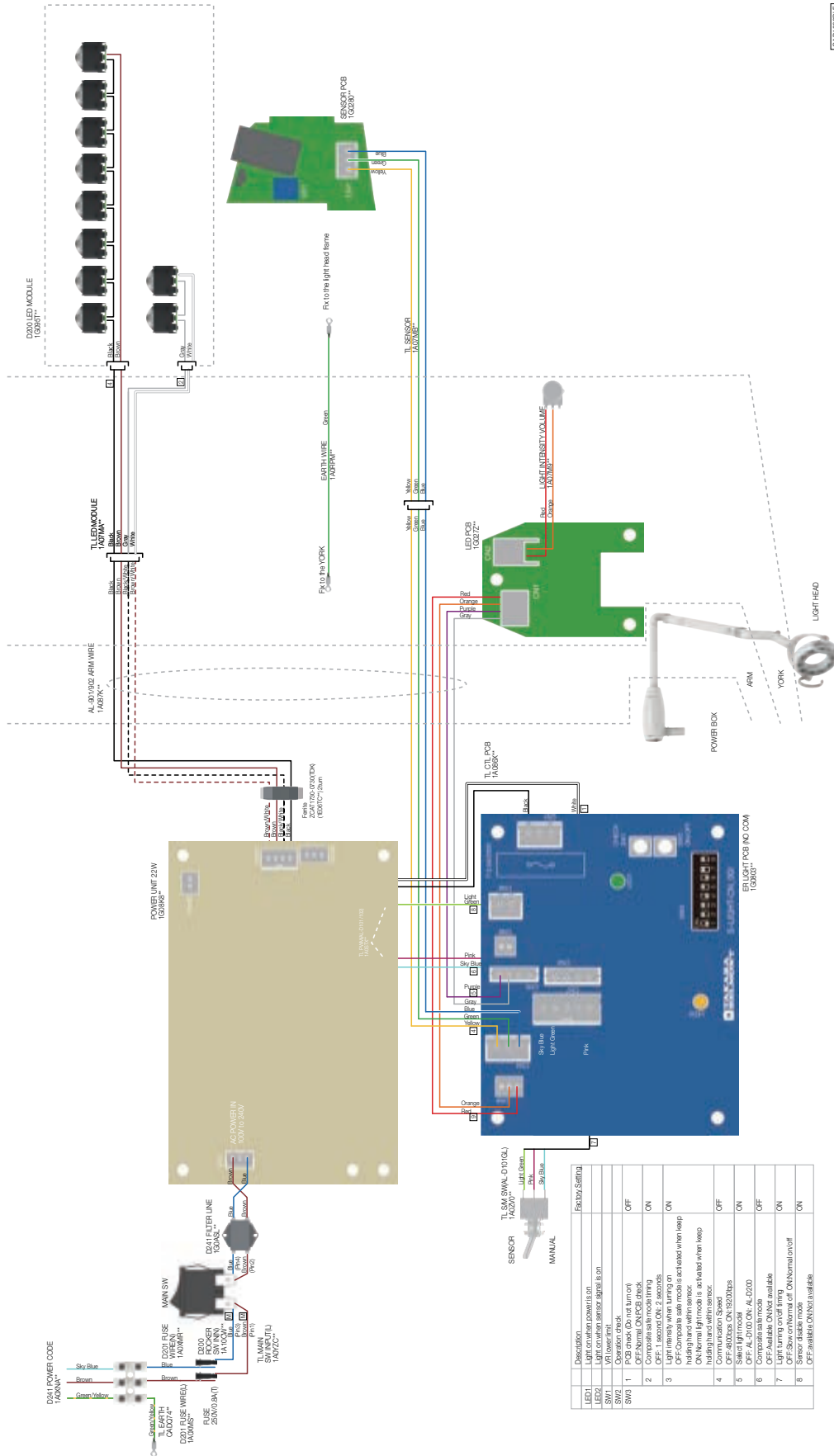


* Unnecessary if the pole length is shorter than 480mm

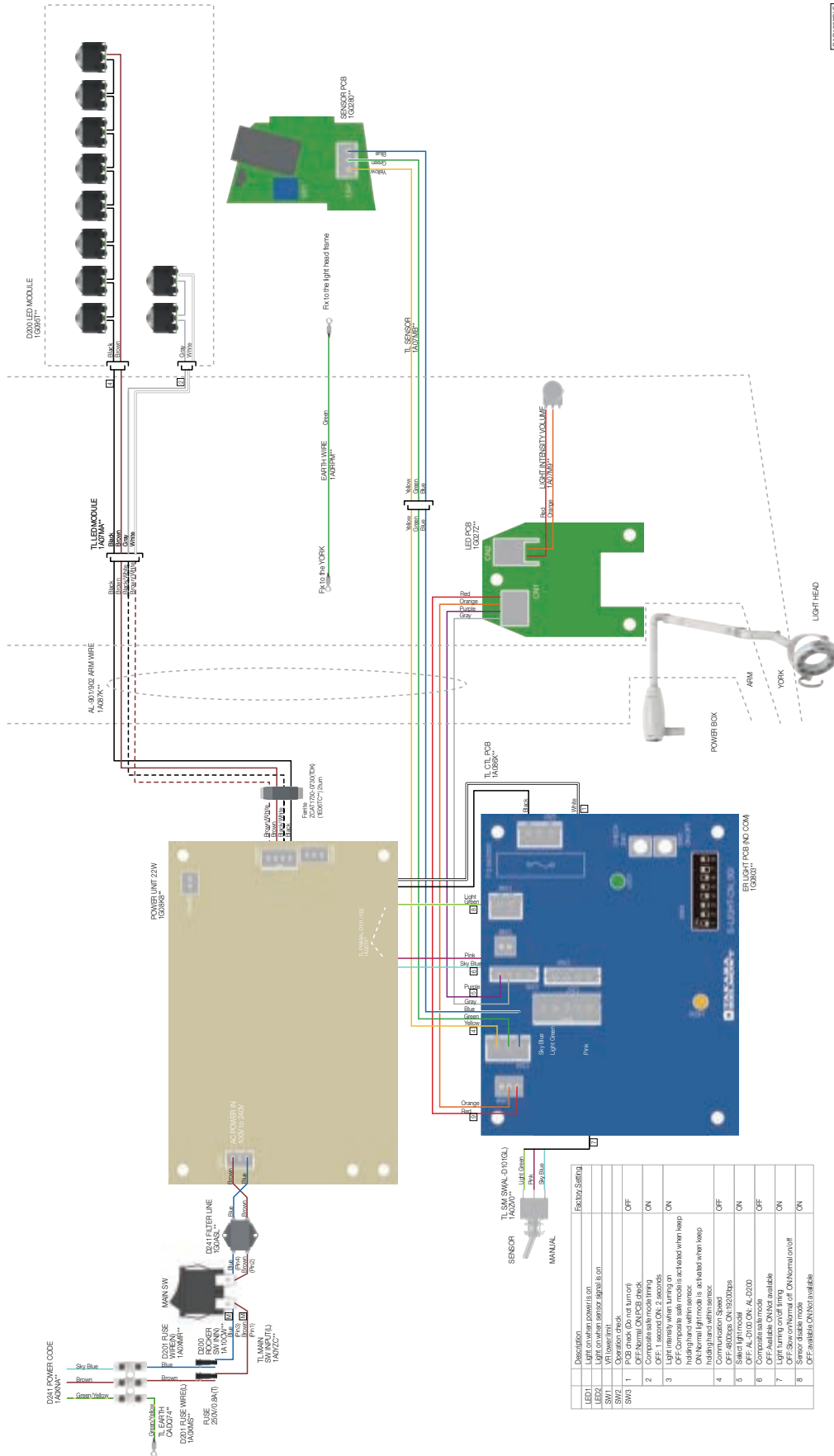
NO.	PARTS NO.	DESCRIPTION	QTY	APPLICABLE SERIAL NO.	NOTE
1	1A0824A0	RAIL (HAMMER NET COATED, CN-80)	1		
2	CAML90B0	CODE HOOK TERMINAL BLOCK	1		
3	CAMG90A0	CENTRE COVER HOOK	1		
4	1G0133A0	PULLEY ASSY WITH STICKER	1		
5	1A0QSDA0	PALLET	1		
6	ABNL23A0	STOPPER	5		
7	1G02EEA0	END COVER ASSY (CN-80)	1		
8	1P03CYA0	CENTER COVER ASSY (CN-80)	1		
9	CAMG95A0	TROLLEY COLLAR (COATED)	1		
10	CAMV63A0	LEAD WIRE GUIDE	1		
11	CENZ15A0	NYLON CLAMP	2		
12	1P08PDA0	ROLLER UPPER ASSY	4		
13	1P08PEA0	ROLLER LOWER ASSY	4		
14	1A0823D0	TROLLEY (HAMMER NET COATED, CN-80)	1		
15	1A087RA0	YOKE RELAY CODE A	1		
16	CAMP73B0	LEAD WIRE COVER	1		
17	1A087TA0	YOKE RELAY CODE C	1		
18	1G02U2A0	T POLE SET 380L (CN-80)	1		
	1G02U3A0	T POLE SET 530L (CN-80)			
	1G02U4A0	T POLE SET 680L (CN-80)			
	1G02U5A0	T POLE SET 840L (CN-80)			
	1G02U6A0	T POLE SET 1000L (CN-80)			
-	1G009XA0	PALLET SCREW SET	1		
-	CGRN39B0	TRACK SCREW SET	1		



NO.	PARTS NO.	DESCRIPTION	QTY	APPLICABLE SERIAL NO.	NOTE
1	1P0211A0	MOUNTING PLATE WITH NUT (NO.2-5)	1		
2	ZA901PAY	FLANGE NUT M8 CHROME (LEVELING NUT)	4		
3	CENE00B0	WASHER M8X22X1.63 CHROME	4		
4	ZB511PAY	SPRING WASHER M8 CHROME	4		
5	1E00ABA0	U NUT M8 CHROME	4		
6	TCPA01A0	CEILING FLANGE	1		
7	ZA774OPU	HEX SOCKET SET SCREW M6X8 (CUP POINT) SUS	4		
8	1A0827A0	CEILING COVER (CN-80)	1		
9	CAMG76B0	STOPPER RING	1		
10	CENB35B0	HEX SOCKET SET SCREW M6X8 (CUP POINT) (RED MEC THREAD LOCK)	3		
11	1G09C4A0	CEILING POLE SET 380MM (CN-80) 8FT	1		
	1G09C6A0	CEILING POLE SET 530MM (CN-80) 8.5FT			
	1G02TNA0	CEILING POLE SET 680MM (CN-80) 9FT			
	1G02TPA0	CEILING POLE SET 840MM (CN-80) 9.5FT			
	1G02TQA0	CEILING POLE SET 1000MM (CN-80) 10FT			
12	CAMK40A0	ROLL PIN 6X70	1		
13	ZA772NRY	HEX SOCKET SET SCREW M5X10 (TRUNCATED CONE POINT) CHROME	4		
-	CGRN38B0	CEILING SCREW SET	1		
-	CGQO13A0	CEILING FLANGE SET (ID NO, 1-7 AND 12)	1		

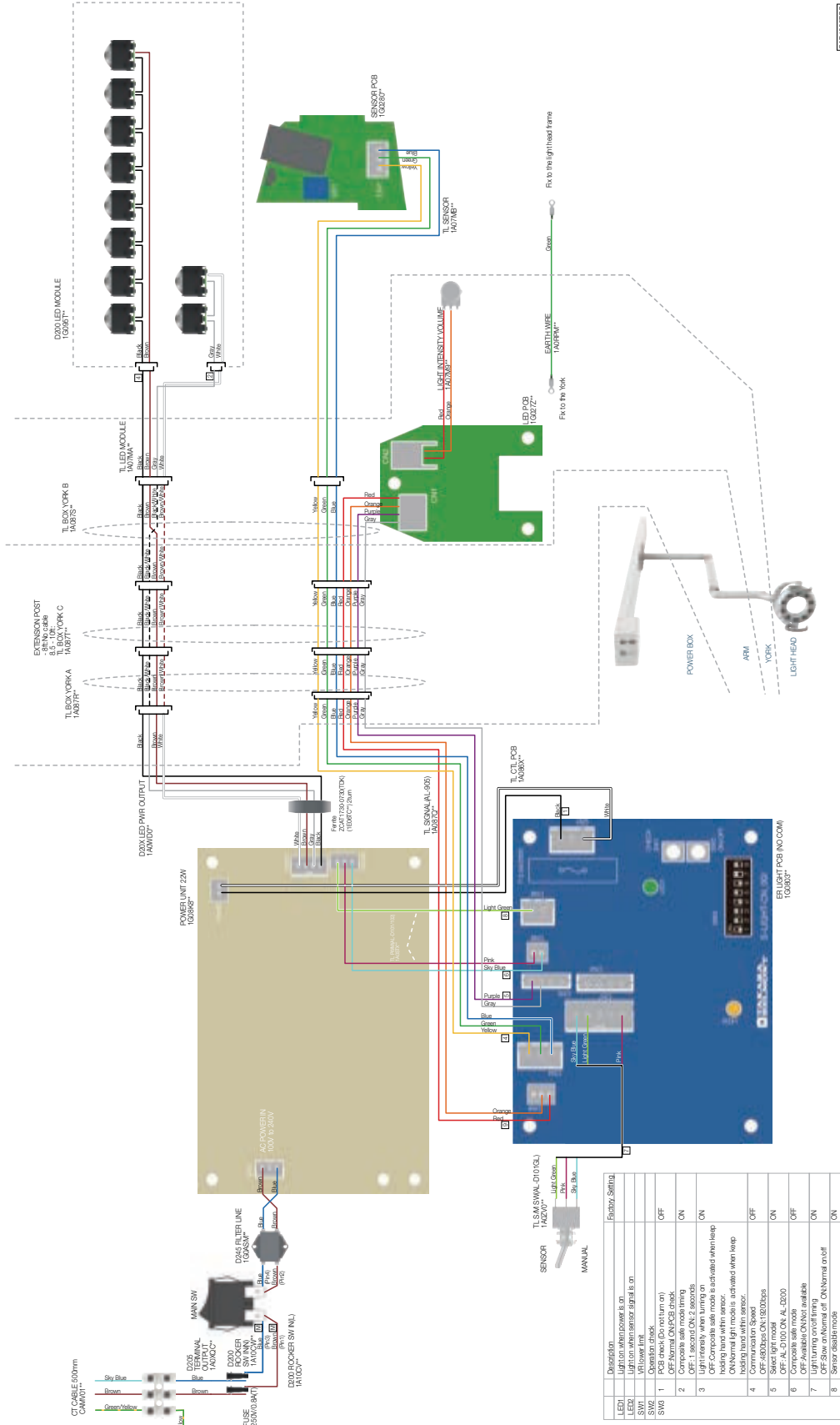


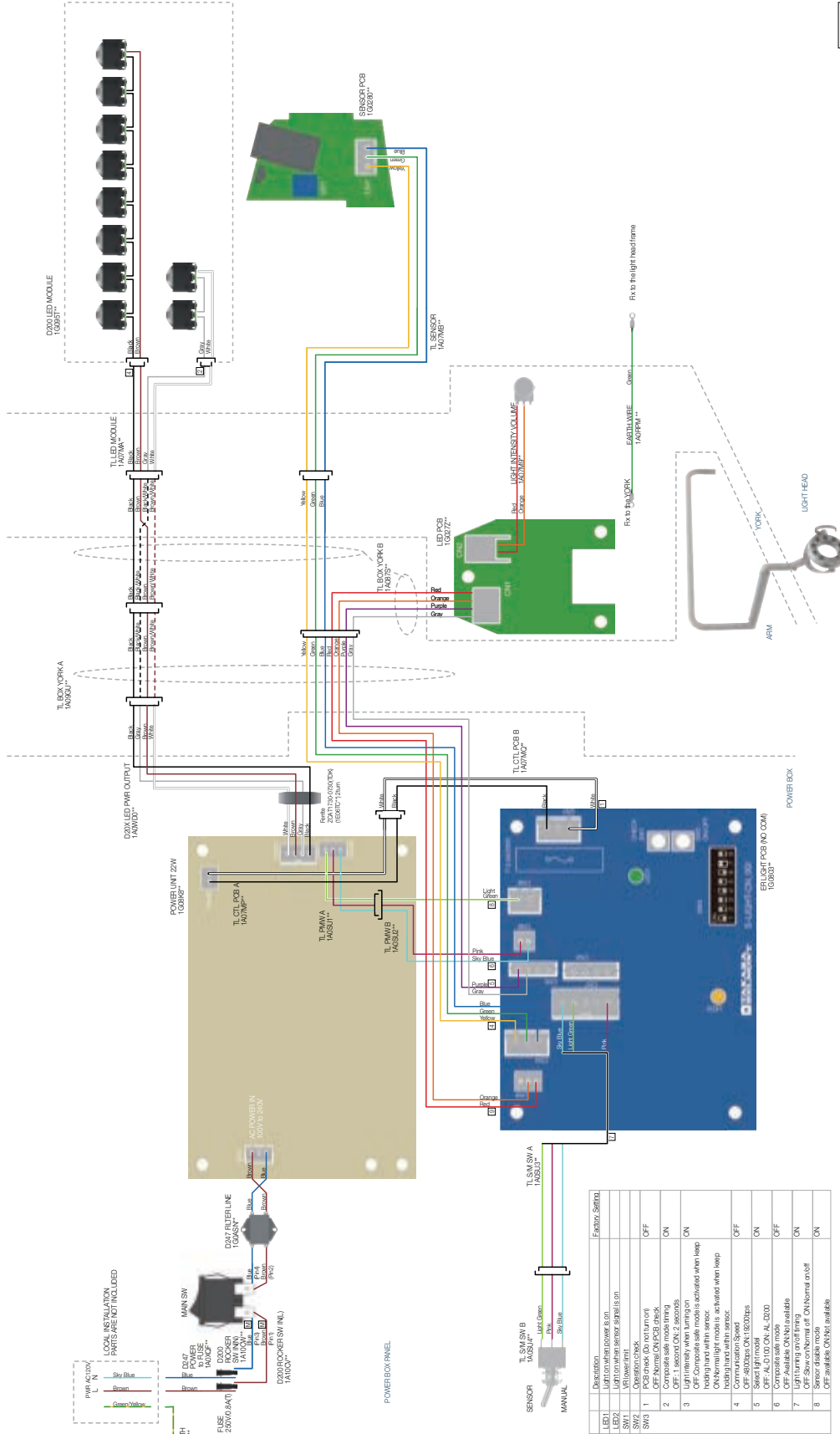
© 2010 TILMAN



CONTINUE

EXD1000PCS

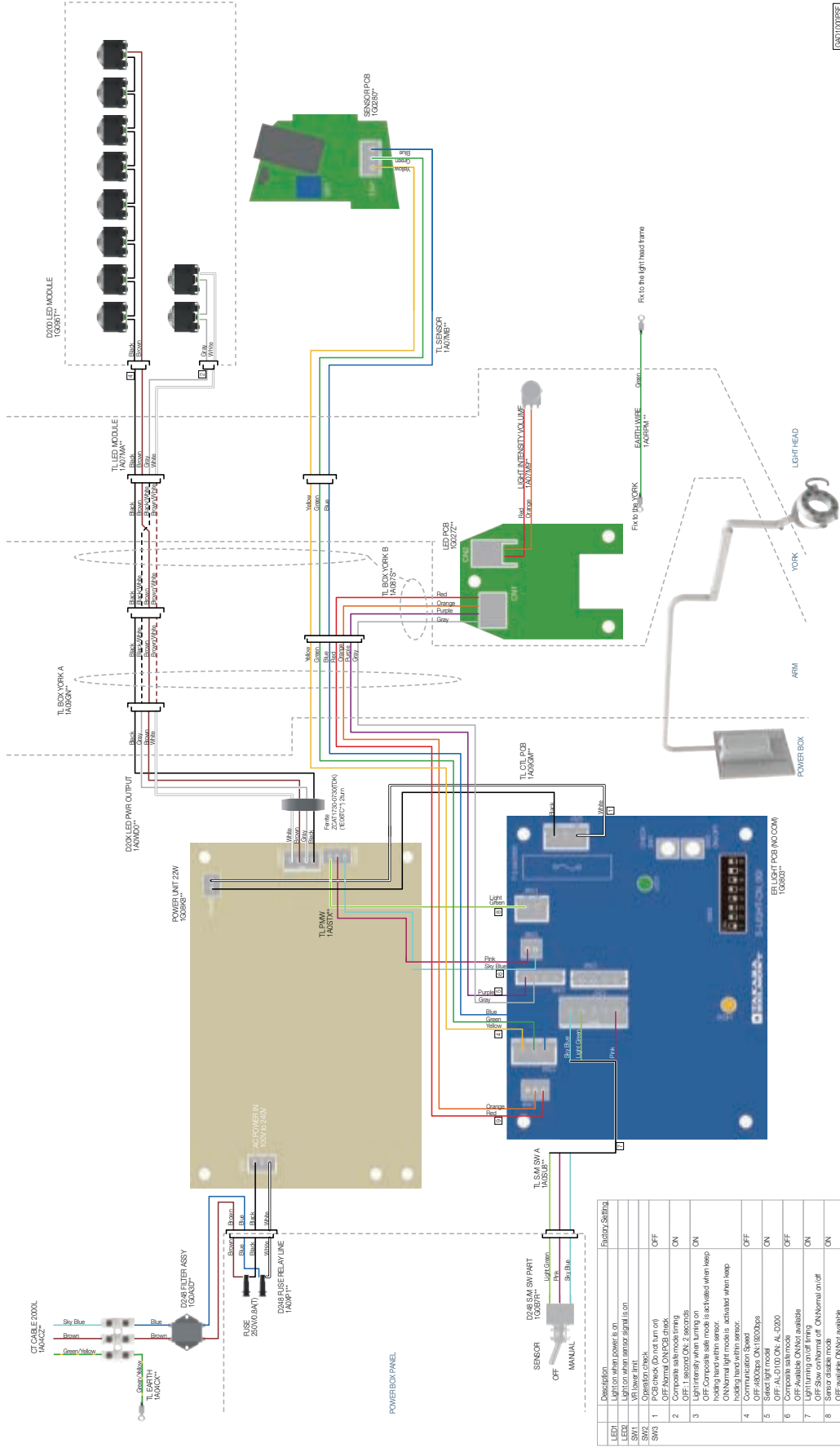




SW	Description	Factory Setting
TL E1	Light on when power is on	ON
TL E2	Light on when sensor is on	ON
SW1	Wallswitch	ON
SW2	Operation check	OFF
SW3	1. Operation check OFF Normal ON PCB check	OFF
2	Compart safe mode timing	ON
3	OFF 1 seconds ON 2 seconds Light on when turning on holding hand with sensor. ON Normal mode is activated when keep holding hand with sensor.	ON
4	OFF 400bps ON 1800bps Normal mode with sensor	OFF
5	Save 1st mode	ON
6	OFF AC-DIOD ON AL-D247	OFF
7	Light turning extinction	ON
8	OFF Abnormal ON Not available ON Show normal on OK Normal on if Sensor is on	ON

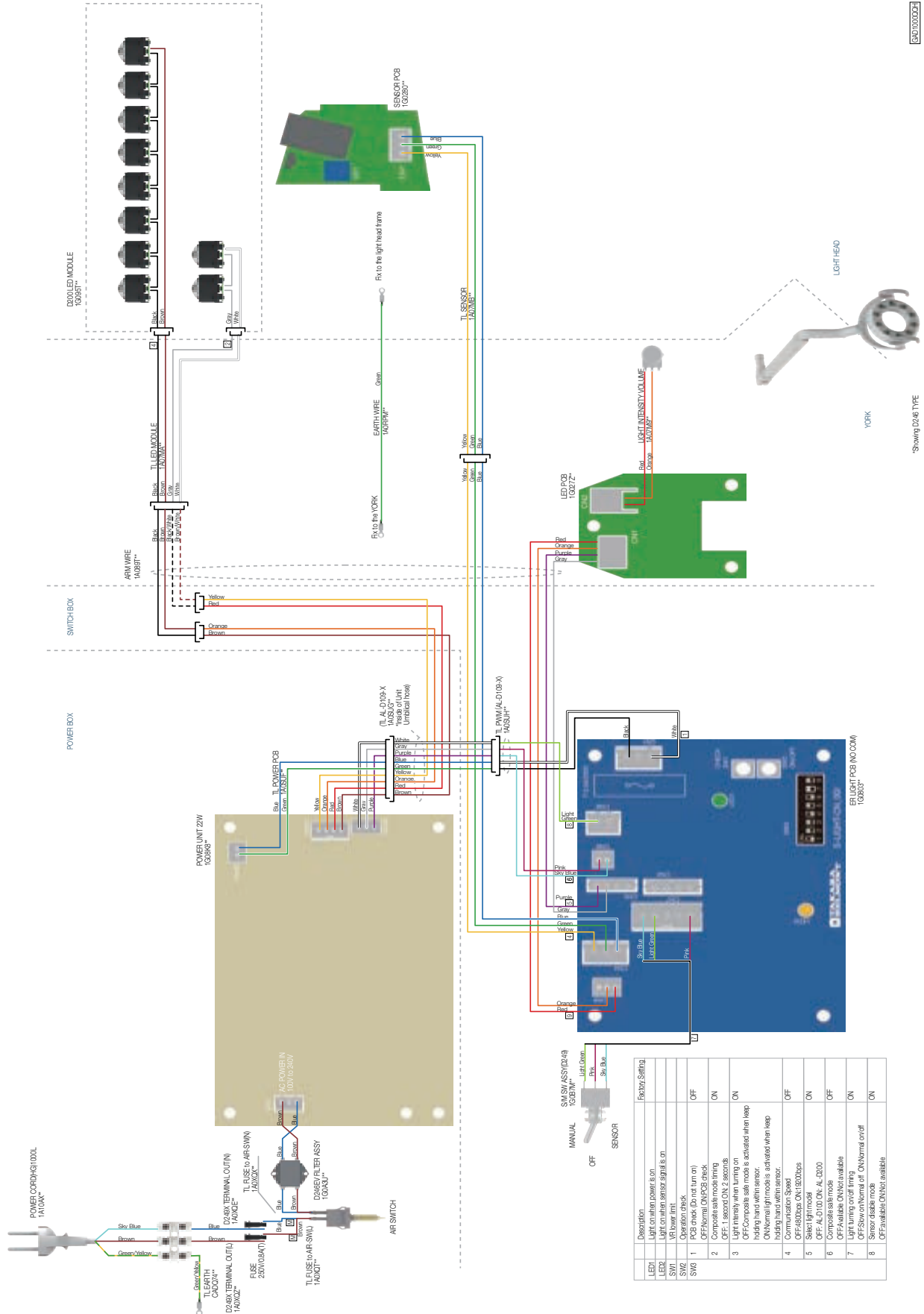
EXD1001PFE

LED SOURCE



		Factory Setting
LED	Check light	Light on when power is on
LED	Light on when sensor signal is on	Light on
SW1	Light timer	Off
SW2	Light timer	Off
SW3	Light timer	Off
SW4	Light timer	Off
1	Composite sal mode timing	ON
2	OFF: 1 second ON: 2 seconds	ON
3	OFF: Composite sal mode is activated when keep holding hand with sensor.	ON
4	ON: Normal light mode is activated when keep holding hand with sensor.	OFF
5	OFF: 4800bps ON: 18000bps	ON
6	OFF: AL-D100 ON: AL-D200	OFF
7	Light turning on/off timing	ON
8	Sensor disable mode	ON

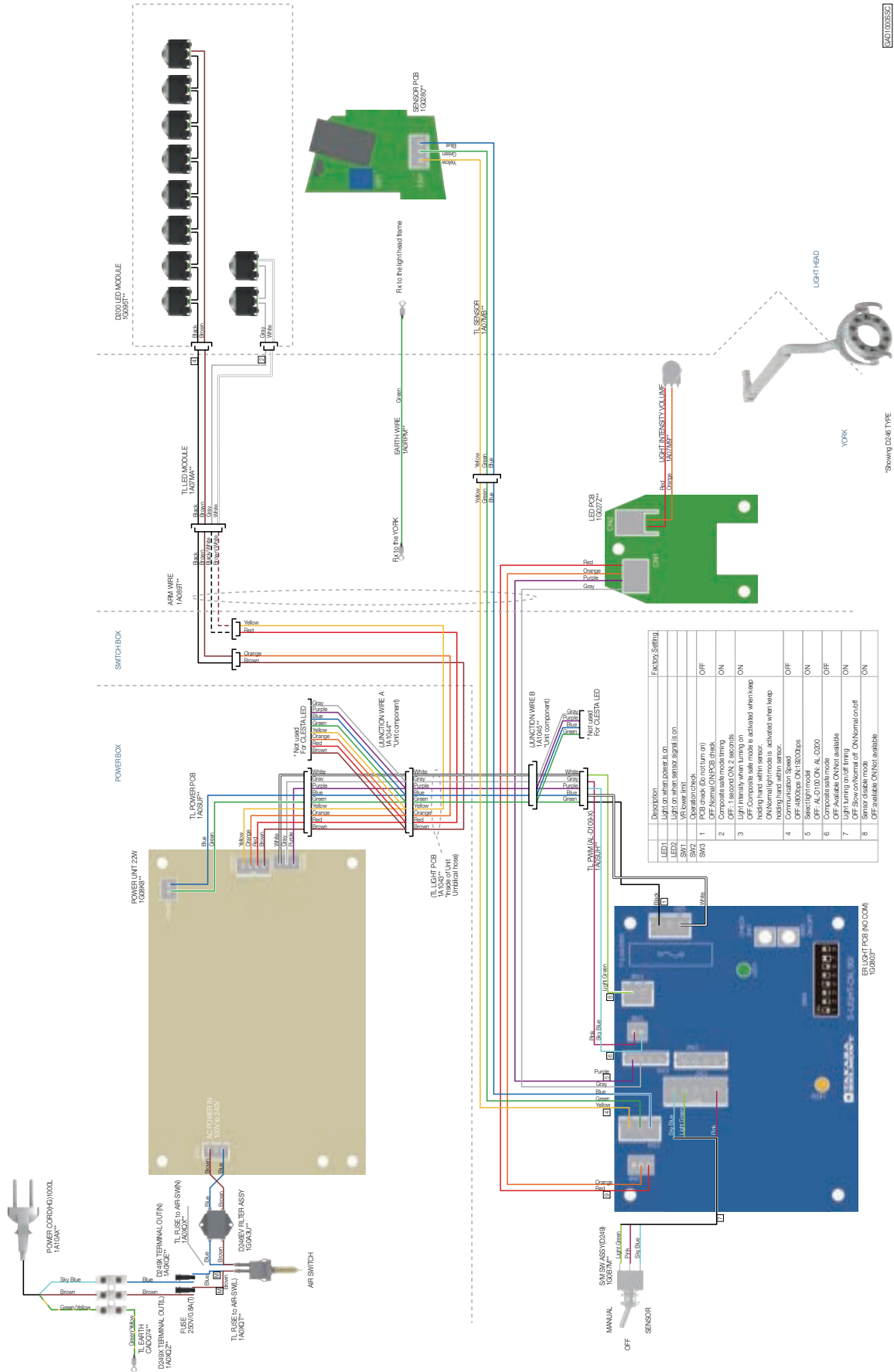
(EVG OTP & Swing Unit on Q3300/Q5500, EVG Swing Unit on B50N, X-Calibur OTP & Swing Unit on B50N/Q3300/Q5500)



AL-D246G-EV
(EVG OTP Unit on B50N only)

BACK TO TOC

542100353



REVISION RECORD

DATE		CONTENT
22-Sep-22	1st	Publish
24-Feb-23	2nd	Modify the control PCB for D241, D242, and D245
22-Apr-24	3rd	Regularly update and modify table of contents and main switch for D241/D242/D245.
20-Feb-25	4th	Regularly update



Importer in U.S.A.
BELMONT EQUIPMENT,
Division of Takara Belmont USA, Inc.

101 Belmont Drive, Somerset, New Jersey 08873 U.S.A.

TEL : (732) 469-5000 / (800) 223-1192

FAX : (732) 356-1035

Importer in Canada

TAKARA COMPANY, CANADA, LTD.

2455 Meadowvale Blvd. Mississauga, Ontario L5N 5S2, Canada

TEL : (905) 816-8965

www.belmont.ca

TAKARA BELMONT CORPORATION

2-1-1, Higashishinsaibashi, Chuo-ku, Osaka, 542-0083, Japan

TEL : +81-6-6213-5945

FAX : +81-6-6212-3680

