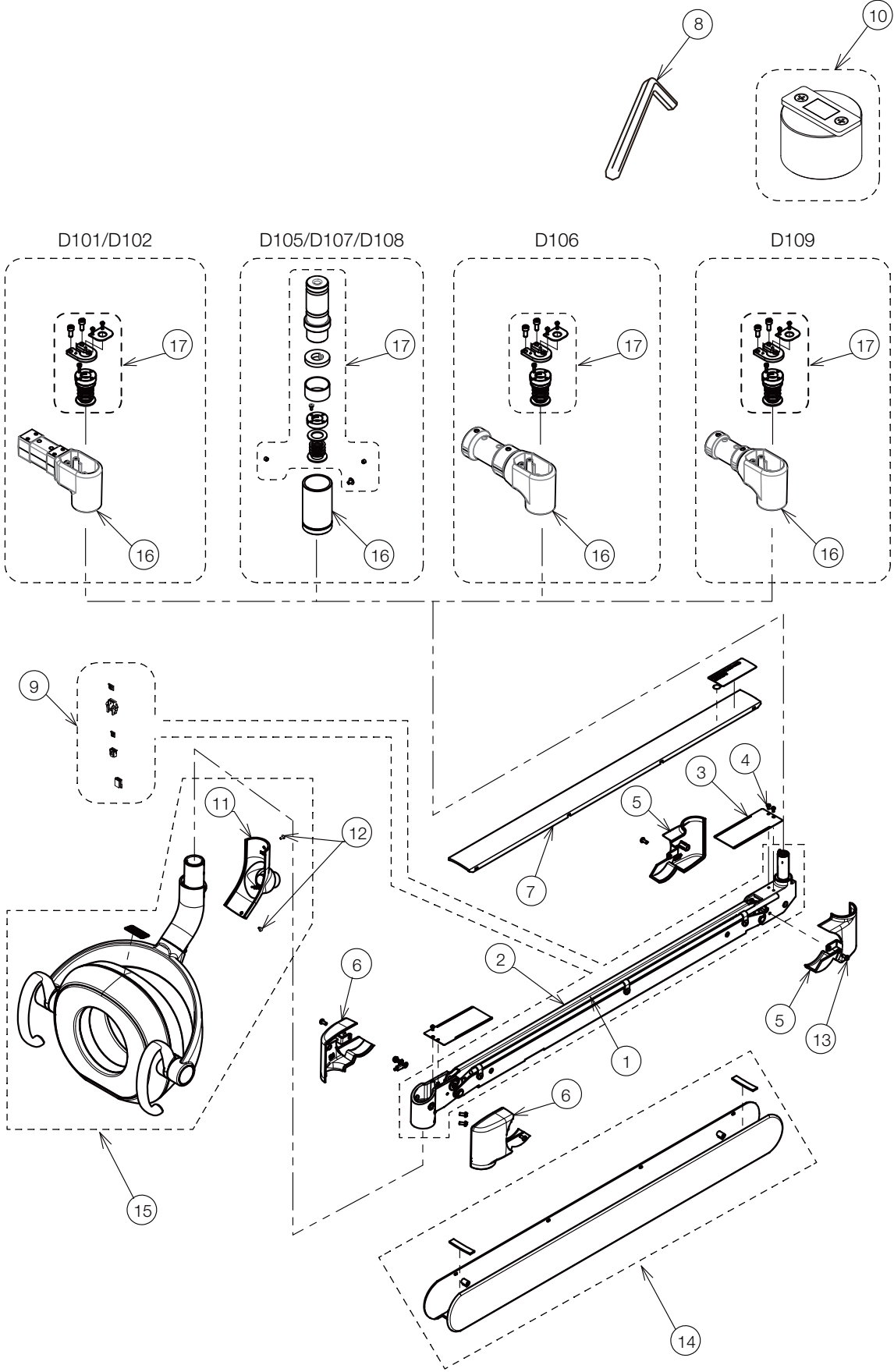




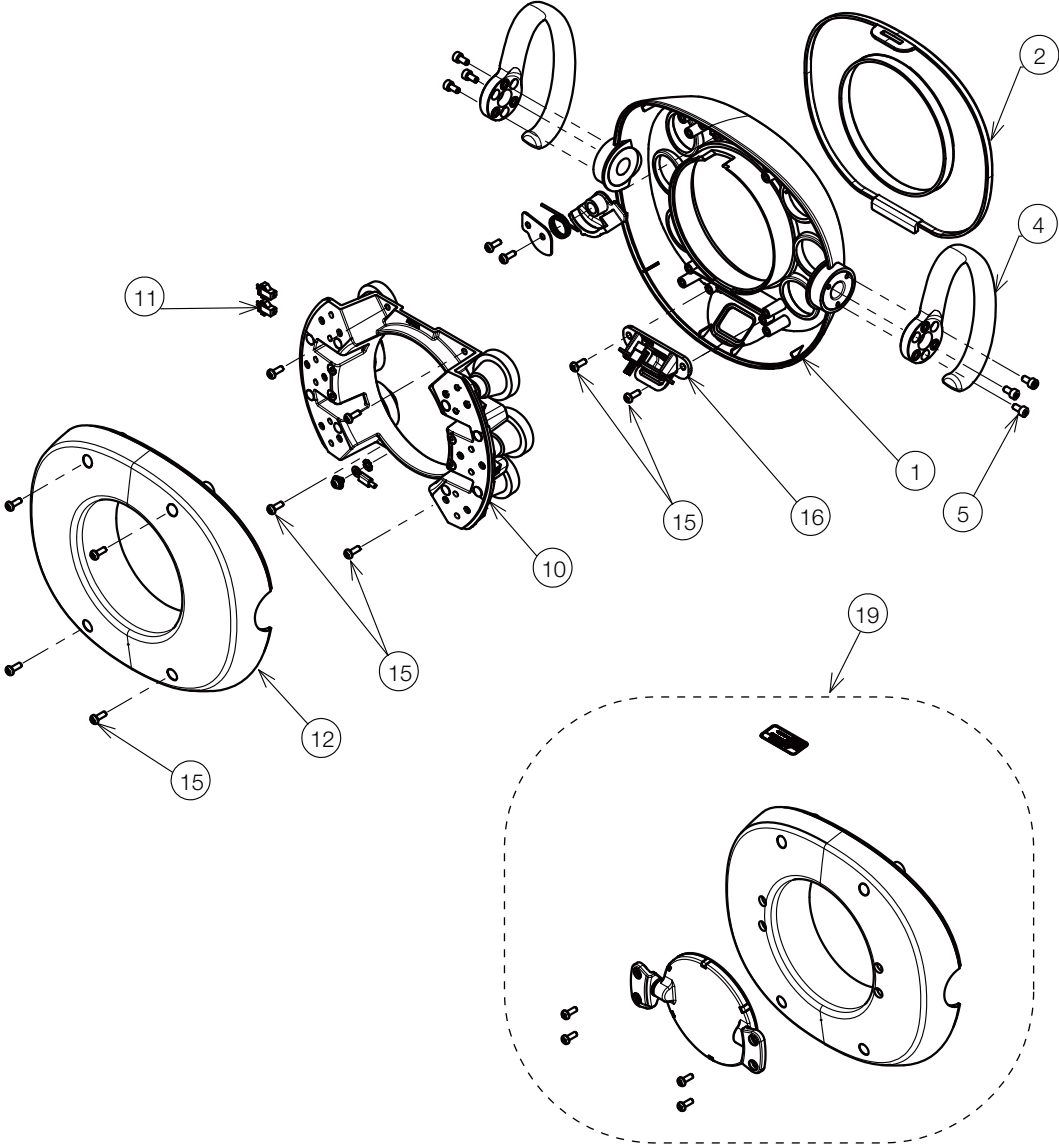
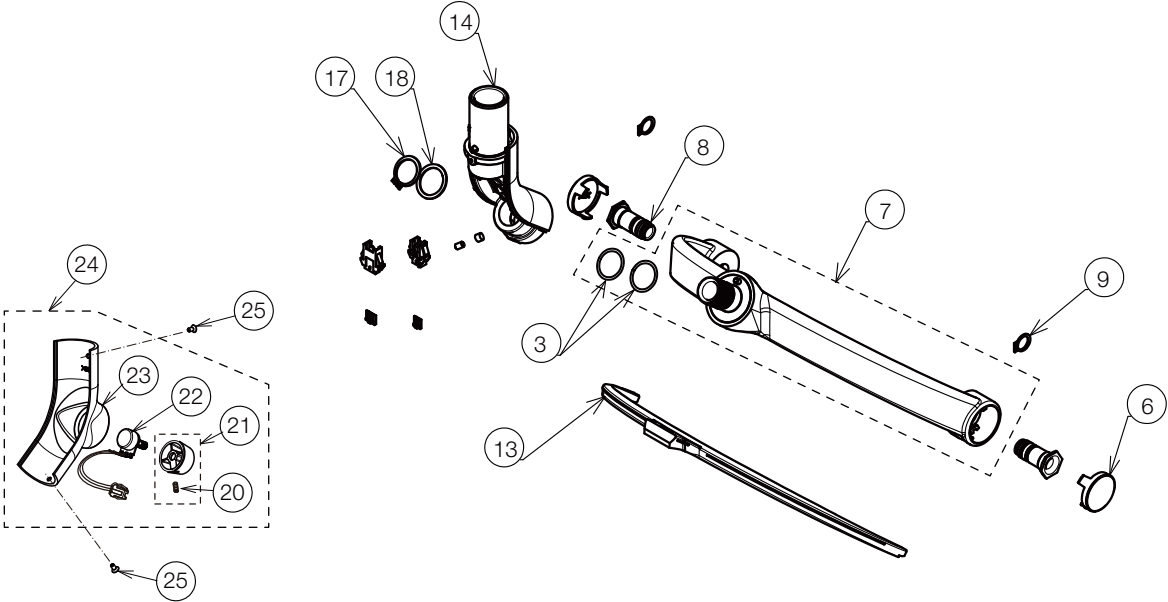
Bel-Nova DENTAL LIGHT
PARTS LIST

TABLE OF CONTENTS

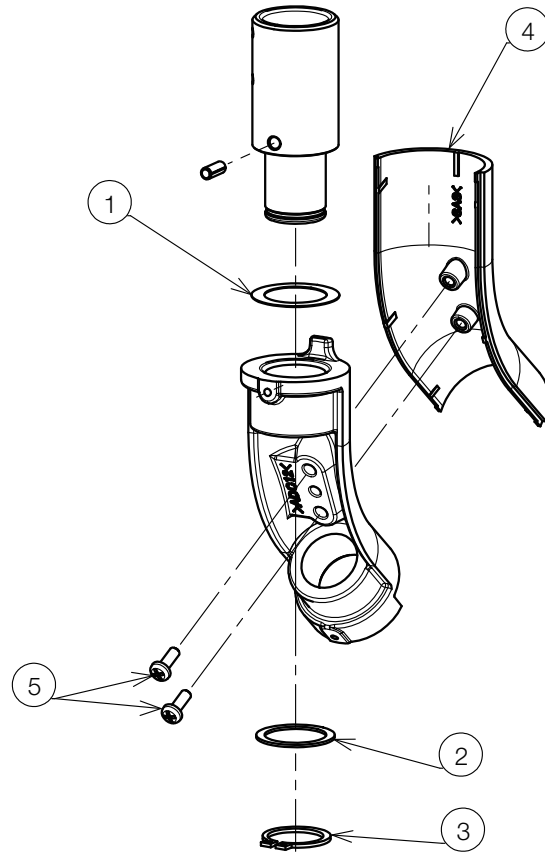
	PAGE
1 . LIGHT SECTION -----	4
2 . LIGHT HEAD -----	6
3 . YORK / SENSOR ASSY-----	8
4 . POWER SUPPLY BOX (D101) -----	10
5 . POWER SUPPLY BOX (D102) -----	12
6 . POWER SUPPLY BOX (D105) -----	14
7 . POWER SUPPLY BOX (D106G-QU) -----	16
8 . SWITCH BOX (D106G-QU) -----	18
9 . POWER SUPPLY BOX (D106G-EV, D109) -----	20
10 . SWITCH BOX (D106G-EV, D109W-X) -----	22
11 . SWITCH BOX (D109W-XN) -----	24
12 . POWER SUPPLY BOX (D107) -----	26
13 . POWER SUPPLY BOX (D108) -----	28
14 . CEILING POLE (D102) -----	30
15 . TRACK (D105) -----	32
16 . SWIVEL ARM (D107) -----	34
17 . SWIVEL ARM (D108) -----	36
 WIRING DIAGRAM	
1 . POST MOUNT AND CEILING MOUNT TYPE / AL-D101/102*-NA -----	38
2 . TRACK MOUNT TYPE / AL-D105*-NA -----	39
3 . EVG OTP & Swing Unit on Q3300/Q5500, EVG Swing Unit on B50N, X-Calibur OTP & Swing Unit on B50N/Q3300/Q5500 / AL-D106G-EV / AL-D109W-X* -	40
4 . EVG OTP Unit on B50N only / AL-D106G-EV -----	41
5 . QUOLIS MOUNT TYPE / AL-D106G-QU -----	42
6 . CABINET MOUNT TYPE / AL-D107*-NA -----	43
7 . WALL MOUNT TYPE / AL-D108*-NA -----	44



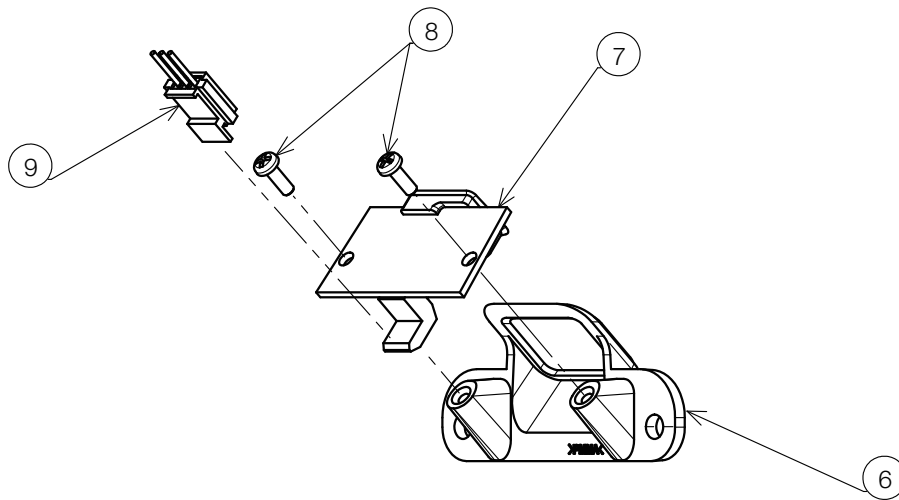
NO.	PARTS NO.	DESCRIPTION	QTY	APPLICABLE SERIAL NO.	NOTE
1	1P072KA0	CABLE WITH CONNECTOR FOR LIGHT IN BALANCE ARM (D101/ D102)	1		
	1P072LA0	CABLE WITH CONNECTOR FOR LIGHT IN BALANCE ARM (D105 / D107 / D108)			
	1P075AA0	CABLE WITH CONNECTOR FOR LIGHT IN BALANCE ARM (D106G-EV / D109)			
	1P075BA0	CABLE WITH CONNECTOR FOR LIGHT IN BALANCE ARM (D106G-QU)			
2	1G0717B0	BALANCE ARM ASSY WITHOUT HARNESS	1		
3	1A0PLCB0	PROTECTION COVER FOR BALANCE ARM	2		
4	ZA111JLY	PAN HEAD SCREW M3x5 CHROME	5		
5	1G07VFA0	BRACKET COVER SET FOR SWING ARM (RAL9003)	1		
	1G088EA0	BRACKET COVER SET FOR SWING ARM (CN80)	1		
6	1G07VGA0	BRACKET COVER SET FOR LIGHT (RAL9003)	1		
	1G088FA0	BRACKET COVER SET FOR LIGHT (CN80)	1		
7	1P076XA0	UPPER COVER WITH LABEL FOR BALANCE ARM (RAL9003)	1		
	1P076YA0	UPPER COVER WITH LABEL FOR BALANCE ARM (CN80)			
	1P0773A0	UPPER COVER WITH LABEL FOR BALANCE ARM (D108 CN80)			
8	CANF43B0	WRENCH FOR SPRING ADJUSTMENT	-		
9	1P0642A0	BALANCE ARM ASSY WITH HARNESS (D101/ D102)	1		
	1P0643A0	BALANCE ARM ASSY WITH HARNESS (D105 / D107 / D108)			
	1P0644A0	BALANCE ARM ASSY WITH HARNESS (D106G-EV / D109)			
	1P0645A0	BALANCE ARM ASSY WITH HARNESS (D106G-QU)			
10	1P05HBA0	JIG FOR BALANCE ARM	1		
11	1G03JAA0	REAR COVER ASSY FOR YORK (INCLUDING VOLUME) (RAL9003)	1		
	1G059EA0	REAR COVER ASSY FOR YORK (INCLUDING VOLUME) (CN80)			
12	CENB09AR	FLAT HEAD SCREW M3x6 (RAL9003)	2		
	CEGN77A0	FLAT HEAD SCREW M3x6 (CN80)			
13	ZA111LPY	PAN HEAD SCREW M4x8 CHROME	6		
14	1P05L9A0	LOWER COVER ASSY FOR BALANCE ARM (RAL9003)	1		
	1P063XA0	LOWER COVER ASSY FOR BALANCE ARM (CN80)			
15	1P05LAA0	LIGHT HEAD ASSY (RAL9003)	1		
	1P063YA0	LIGHT HEAD ASSY (CN80)			
16	1P063ZA0	SWIVEL ARM KNUCKLE (D101 RAL9003)	1		
	1P0640A0	SWIVEL ARM KNUCKLE (D101 / D102 CN80)			
	1G07WXA0	SWIVEL ARM KNUCKLE (D106 CN80)			
	1G080BA0	POLE JOINT (D105 / D107 / D108 CN80)			
	1G07WWA0	SWIVEL ARM KNUCKLE (D109 RAL9003)			
17	1P05LCA0	JOINT KIT (D101 / D102 / D106 / D109)	1		
	1P0641B0	JOINT KIT (D105 / D107 / D108)			



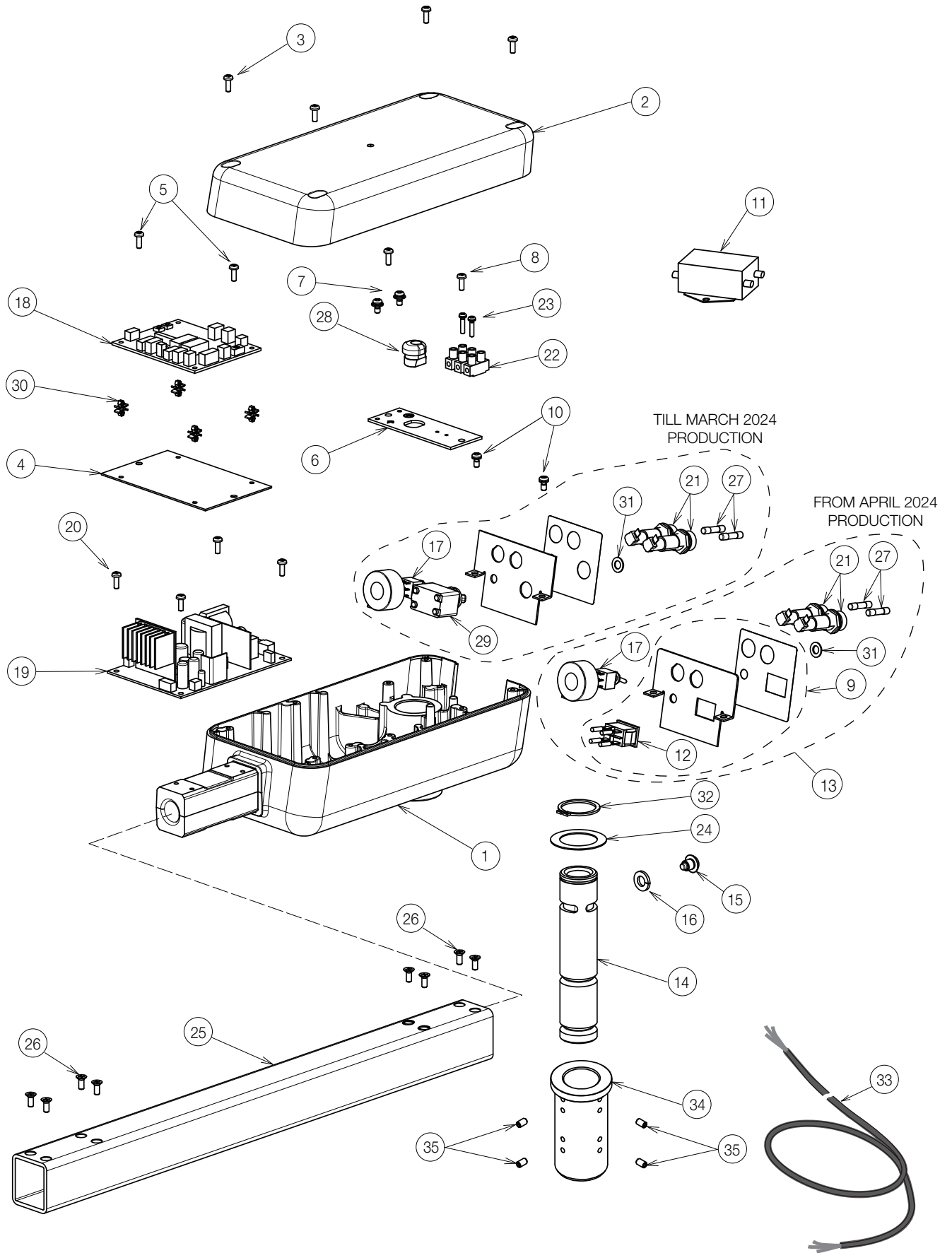
NO.	PARTS NO.	DESCRIPTION	QTY	APPLICABLE SERIAL NO.	NOTE
1	1A0PKPC0	FRONT COVER FOR HEAD (RAL9003)	1		
	1A0ST8B0	FRONT COVER FOR HEAD (CN80)			
2	1A0PKRA0	COVER FOR LENS	1		
3	FJMA83A0	O-RING	2		
4	1A07L6B0	HANDLE FOR LIGHT	2		
5	ZA761LPU	HEX SOCKET HEAD SCREW M4x8 SUS	6		
6	1A0B9FA0	CAP FOR YORK	2		
7	1G071AA0	YORK (RAL9003)	1		
	1G07X2A0	YORK (CN80)			
8	1G03SBA0	SHAFT FOR HEAD ROTATE	2		
9	ZG041RAG	C-RING M12 BLACK	2		
10	1G06Y9D0	LED MODULE ASSY	1		
11	1A07MAB0	WIRE FOR LED MODULE	1		
12	1P0757A0	REAR COVER WITH LABEL FOR HEAD (RAL9003)	1		
	1P0771A0	REAR COVER WITH LABEL FOR HEAD (CN80)			
13	1A0PKJA0	COVER FOR YORK	1		
14	1G0725A0	YORK FOR BASE (RAL9003)	1		
	1G07X1A0	YORK FOR BASE (CN80)			
15	AFFX58A0	PAN HEAD SCREW TYPE-P M4x10 CHROME	12		
16	1P072JA0	SENSOR ASSY WITH CONNECTOR	1		
17	ZG041VAG	C-RING	1		
18	1A0B9RA0	WASHER FOR YORK	1		
19	1P05U9A0	PATIENT MIRROR SET (RAL9003)	1		
	1P05XXA0	PATIENT MIRROR SET (CN80)			
20	ZA774JNG	HEX SOCKET SET SCREW (CUP POINT) M3X6 BLACK	1		
21	1P0419A0	VOLUME KNOB (CN-80) WITH SET SCREW	1		
22	1A0BKFA0	INTENSITY CONTROL VOLUME ASSEMBLY WITH HARNESS	1		
23	1A0B9CB0	REAR COVER FOR YORK (RAL9003)	1		
	1A0HVLA0	REAR COVER FOR YORK (CN80)			
24	1G03JAA0	REAR COVER ASSY FOR YORK (INCLUDING VOLUME) (RAL9003)	1		
	1G059EA0	REAR COVER ASSY FOR YORK (INCLUDING VOLUME) (CN80)			
25	CENB09AR	FLAT HEAD SCREW M3x6 (RAL9003)	2		
	CEGN77A0	FLAT HEAD SCREW M3x6 (CN80)			



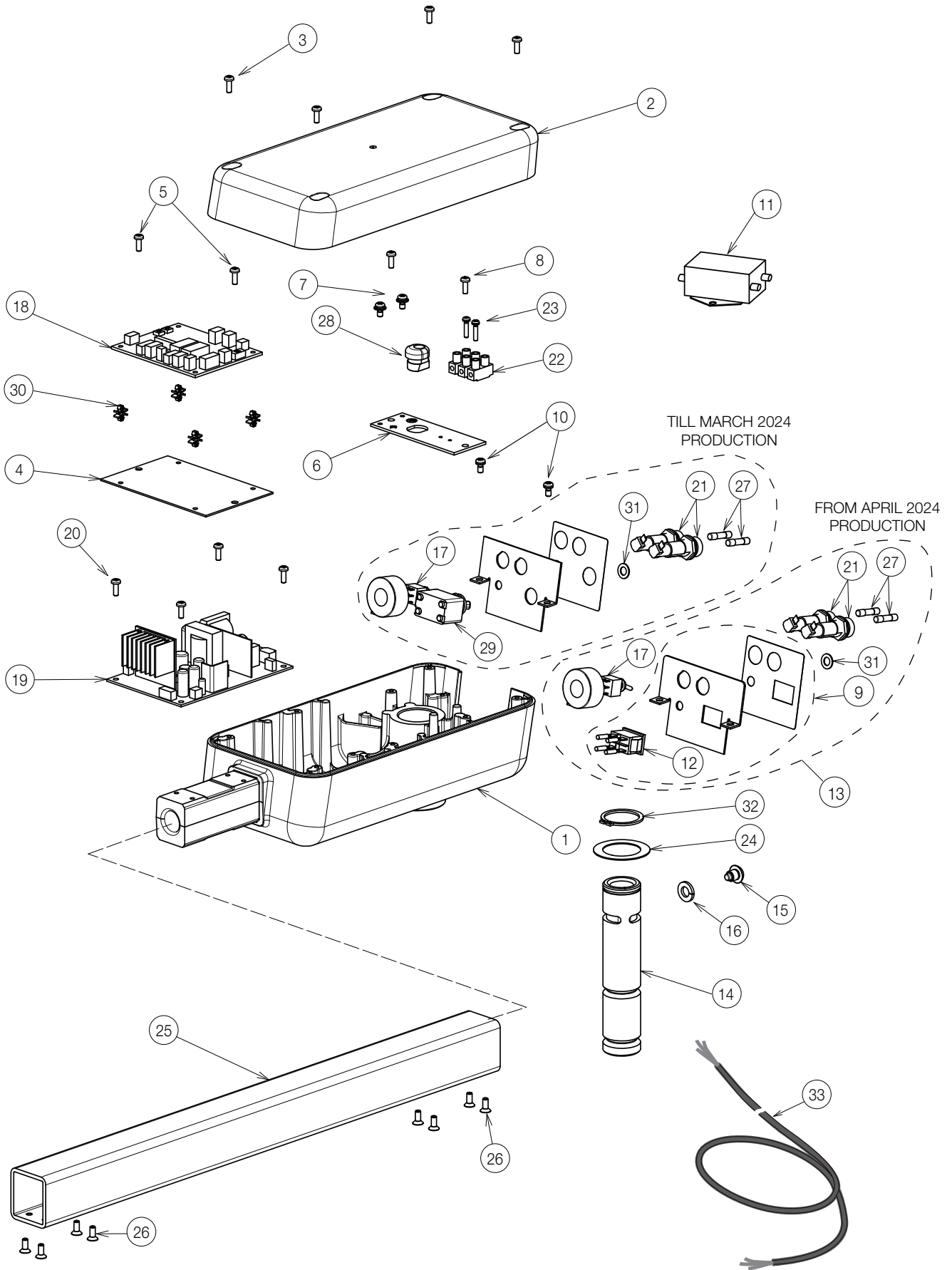
16 SENSOR ASSY



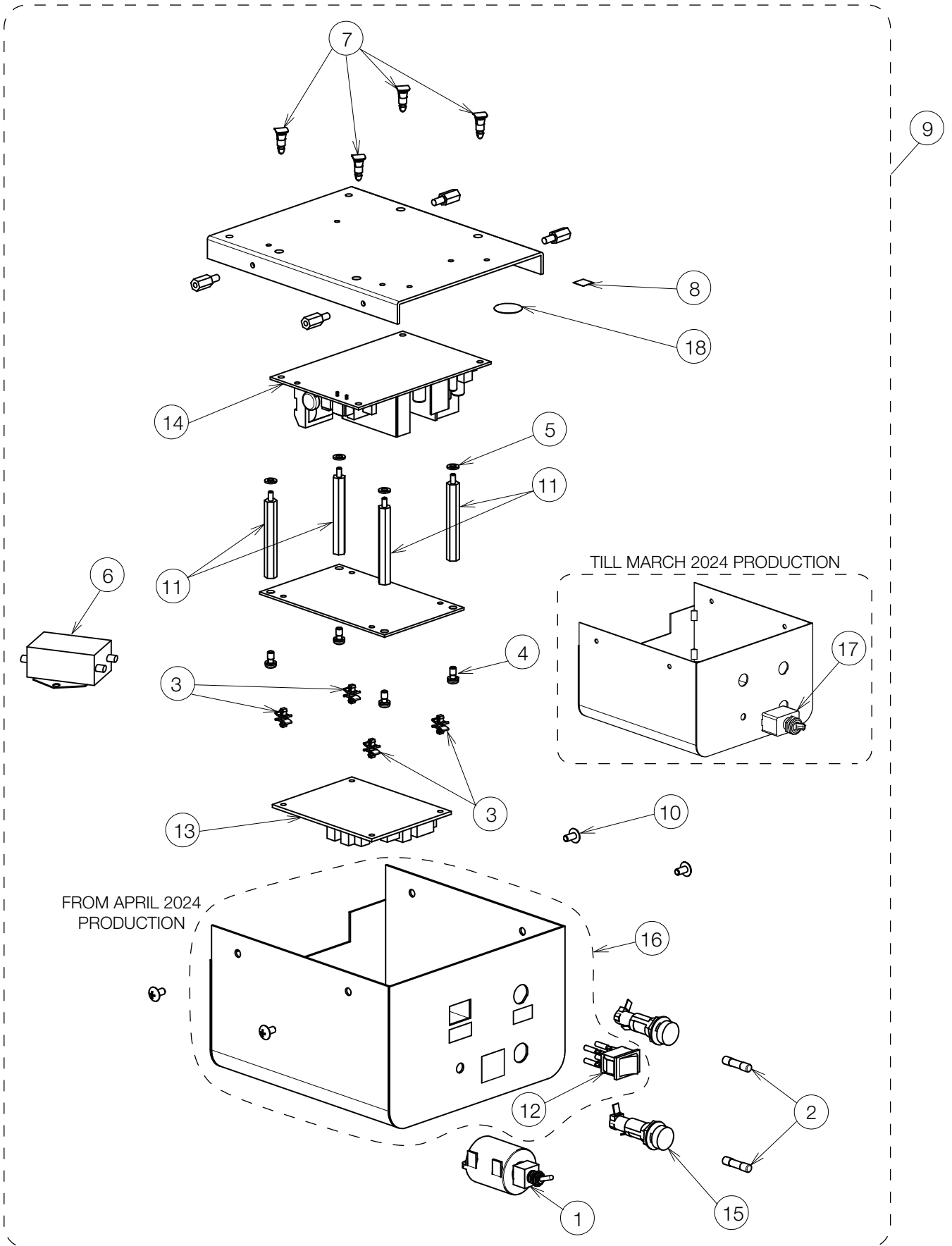
NO.	PARTS NO.	DESCRIPTION	QTY	APPLICABLE SERIAL NO.	NOTE
1	1E00UUA0	WAVE WASHER	1		
2	1A0B9RA0	WASHER FOR YORK	1		
3	ZG041VAG	C-RING	1		
4	1A0B9BA0	FRONT COVER FOR YORK (RAL9003)	1		
	1A0HVKA0	FRONT COVER FOR YORK (CN80)			
5	AFFX58A0	PAN HEAD SCREW TYPE-P M4x10 CHROME	2		
6	1A0PKNA0	COVER FOR SENSOR	1		
7	1G03GLB0	SENSOR PCB	1		
8	CECN46A0	PAN HEAD TAPPING SCREW M3x8 FOR PLASTIC	2		
9	1P072HA0	WIRE WITH CONNECTOR FOR SENSOR	1		



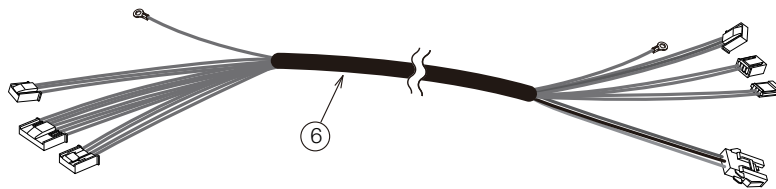
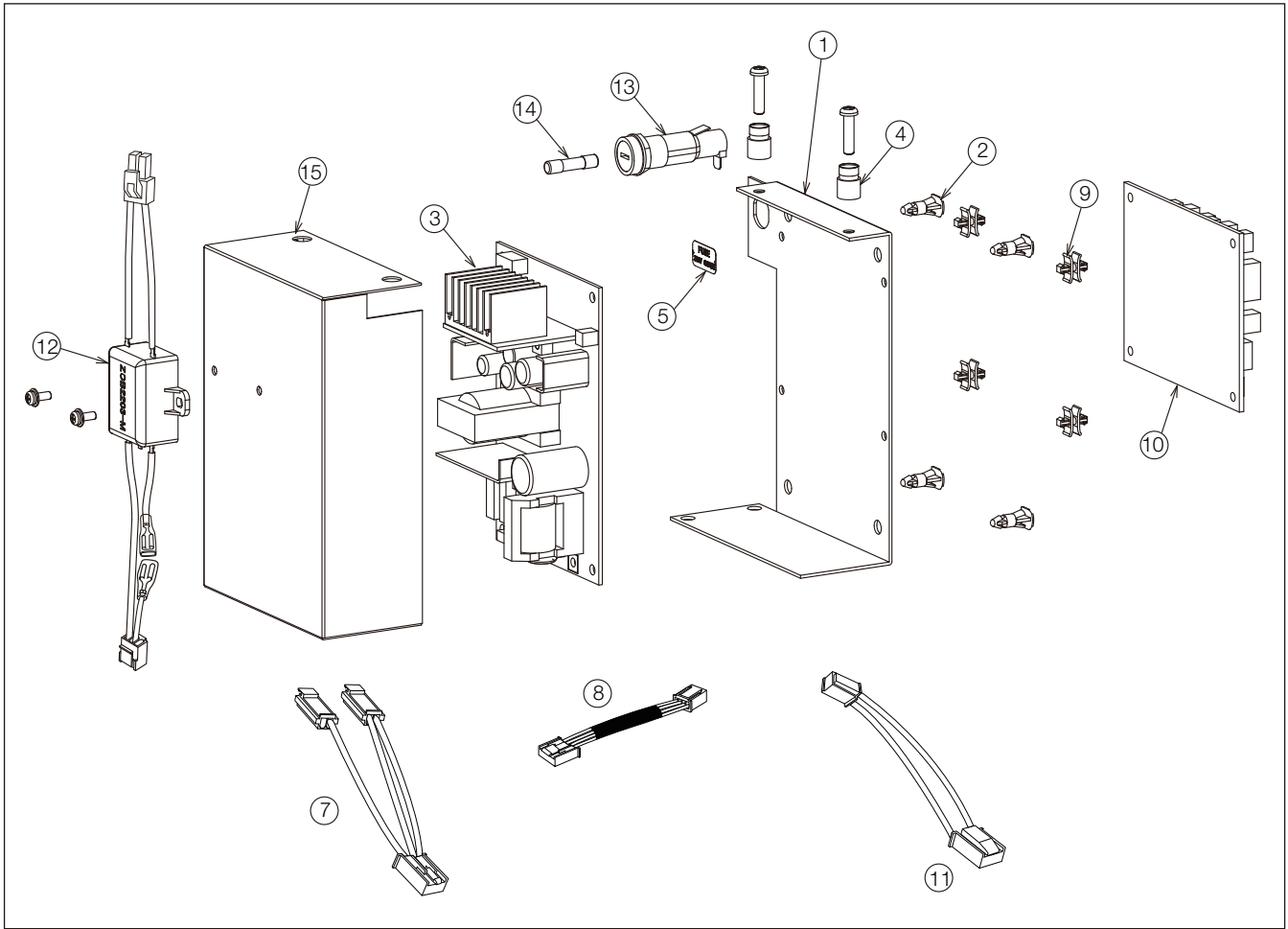
NO.	PARTS NO.	DESCRIPTION	QTY	APPLICABLE SERIAL NO.	NOTE
1	1P074VA0	HOUSING WITH LABEL (RAL9003)	1		
	1P076ZA0	HOUSING WITH LABEL (CN80)			
2	1A0BFNA0	HOUSING COVER (RAL9003)	1		
	1A0HVJA0	HOUSING COVER (CN80)			
3	ZA111LPY	PAN HEAD SCREW M4x8 CHROME	4		
4	1A0BFPA0	PLATE FOR CONTROL PCB	1		
5	ZA111LPY	PAN HEAD SCREW M4x8 CHROME	2		
6	1A0BFQB0	ELECTRIC PARTS FIXING PLATE	1		
7	ZA88JLRL	PAN HEAD SEMS SCREW 3P M4x10 BRASS	2		
8	ZA111LPY	PAN HEAD SCREW M4x8 CHROME	2		
9	1P0807A0	ROCKER SWITCH WITH PLATE AND HARNESS (D101/RAL9003)	1		TILL MARCH 2024 PRODUCTION
	1P080AA0	ROCKER SWITCH WITH PLATE AND HARNESS (D101/CN80)			
10	ZA111LPY	PAN HEAD SCREW M4x8 CHROME	2		
11	1A08AHC0	NOISE FILTER WITH WIRE	1		
12	1E09JTA0	ROCKER SWITCH	1		FROM APRIL 2024 PRODUCTION
13	1G0AQ8A0	BACK PLATE ASSY FOR ROCKER SWITCH SPEC. (RAL9003)	1		FROM APRIL 2024 PRODUCTION
	1G0AQ7A0	BACK PLATE ASSY FOR ROCKER SWITCH SPEC. (CN80)			
14	1A07W1B0	ROTATION SHAFT	1		
15	1A07W2A0	ROTATION STOPPER BOLT M8	1		
16	ZB511PAY	SPRING WASHER M8 CHROME	1		
17	1A0STYC0	SENSOR/MANUAL MODE SWITCH ASSY WITH WIRE	1		
18	1G0803E0	LIGHT CONTROL PCB	1		
19	1G06SAC0	POWER PCB	1		
20	ZA111LPY	PAN HEAD SCREW M4x8 CHROME	4		
21	AEFR93B0	FUSE HOLDER F-400-01A2	2		
22	CAML90B0	TERMINAL BLOCK	1		
23	ZA88JJUY	PAN HEAD SEMS SCREW 3P M3x16 CHROME	2		
24	CAND32A0	WASHER 43x29x0.8	1		
25	CAOA45CR	SWIVEL ARM 485MM (4 HOLES) (RAL9003)	1		
	1A0HVSA0	SWIVEL ARM 485MM (4 HOLES) (CN80)			
26	ZA112LRY	FLAT HEAD SCREW M4x10	8		
27	CEEN94A0	FUSE 250V 0.8A (T)	2		
28	CEGN46A0	CORD BUSH	1		
29	-	DISCONTINUED. FOR REPLACEMENT, PLEASE ORDER NO.9.	1		TILL MARCH 2024 PRODUCTION
30	CERN39A0	DOUBLE LOCKING SPACER	4		
31	ZB561OAM	WASHER M6x11.5x0.8 BRASS NICKEL	1		
32	CENX94A0	C-RING	1		
33	1A0ZV4A0	POWER SUPPLY CODE 5000MM	1		PREVIOUS CODE: 1A0BMMAO
34	1A0GPFB0	LIGHT ADAPTOR	1		
35	CENB34B0	HEX SET SCREW M5x8 CHROME	4		



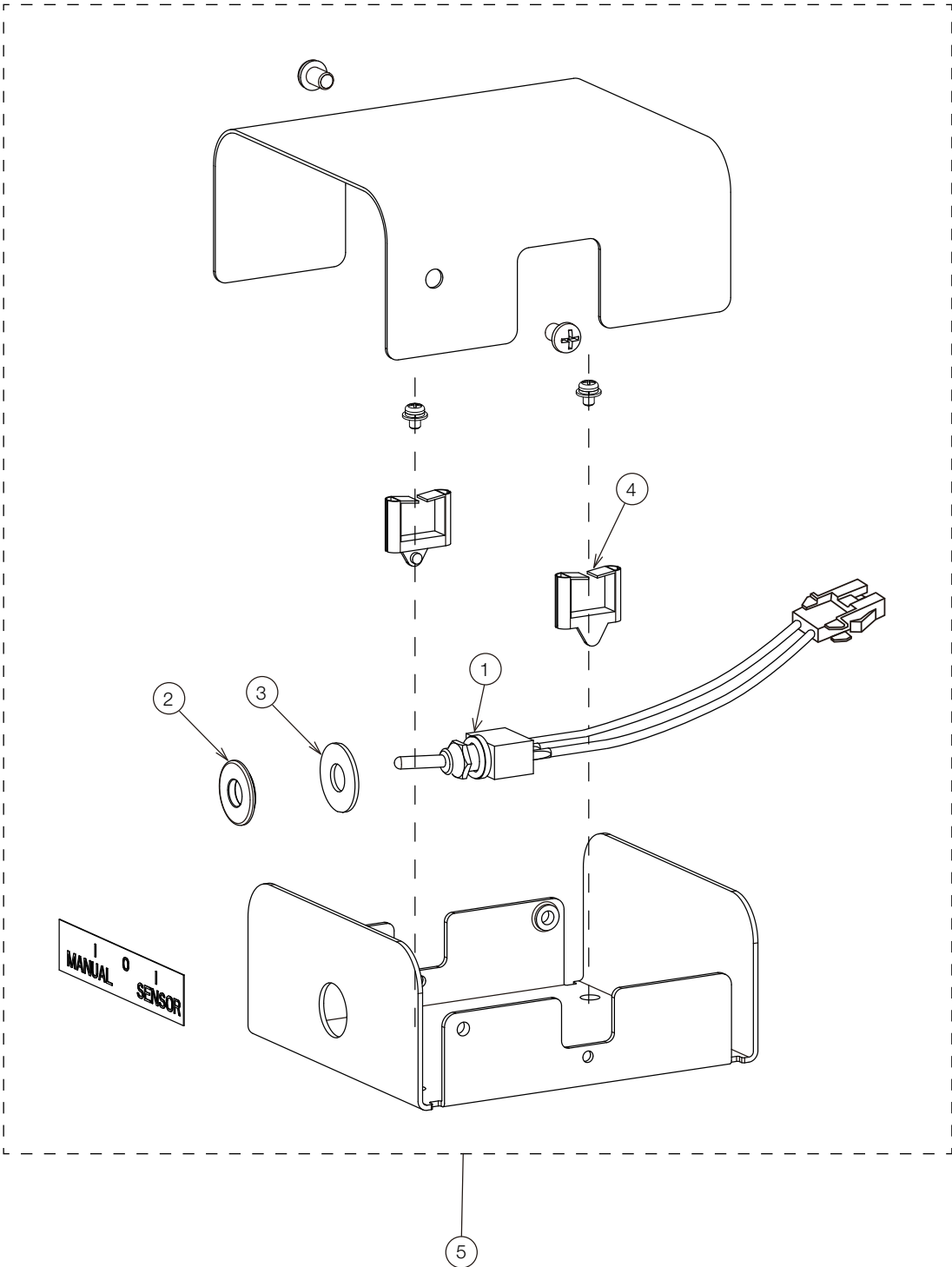
NO.	PARTS NO.	DESCRIPTION	QTY	APPLICABLE SERIAL NO.	NOTE
1	1P0770A0	HOUSING WITH LABEL (CN80)	1		
2	1A0BFNA0	HOUSING COVER (RAL9003)			
	1A0HVJA0	HOUSING COVER (CN80)			
3	ZA111LPY	PAN HEAD SCREW M4x8 CHROME	4		
4	1A0BFPA0	CONTROL PCB FIXING PLATE	1		
5	ZA111LPY	PAN HEAD SCREW M4x8 CHROME	2		
6	1A0BFQB0	ELECTRIC PARTS FIXING PLATE	1		
7	ZA88JLRL	PAN HEAD SEMS SCREW P3 M4x10 BRASS	2		
8	ZA111LPY	PAN HEAD SCREW M4x8 CHROME	2		
9	1P080BA0	ROCKER SWITCH WITH PLATE AND HARNESS (D102/CN80)			
10	ZA111LPY	PAN HEAD SCREW M4x8 CHROME	2		
11	1A08AHC0	NOISE FILTER WITH WIRE	1		
12	1E09JTA0	ROCKER SWITCH	1		FROM APRIL 2024 PRODUCTION
13	1G0AQ9A0	BACK PLATE ASSY FOR ROCKER SWITCH SPEC. (CN80)	1		FROM APRIL 2024 PRODUCTION
14	1A07W1B0	ROTATION SHAFT	1		
15	1A07W2A0	ROTATION STOPPER BOLT M8	1		
16	ZB511PAY	SPRING WASHER M8 CHROME	1		
17	1A0STYC0	SENSOR/MANUAL MODE SWITCH ASSY WITH WIRE	1		
18	1G0803E0	LIGHT CONTROL PCB	1		
19	1G06SAC0	POWER PCB	1		
20	ZA111LPY	PAN HEAD SCREW M4x8 CHROME	4		
21	AEFR93B0	FUSE HOLDER F-400-01A2	2		
22	CAML90B0	TERMINAL BLOCK	1		
23	ZA88JJUY	PAN HEAD SEMS SCREW 3P M3x16 CHROME	2		
24	CAND32A0	WASHER 43x29x0.8	1		
25	CAOA45CR	SWIVEL ARM 485MM (4 HOLES) (RAL9003)	1		
	1A0HVSA0	SWIVEL ARM 485MM (4 HOLES) (CN80)			
26	ZA112LRY	FLAT HEAD SCREW M4x10 CHROME	8		
27	CEEN94A0	FUSE 250V 0.8A (T)	2		
28	CEGN46A0	CORD BUSH	1		
29	-	DISCONTINUED. FOR REPLACEMENT, PLEASE ORDER NO.9.	1		TILL MARCH 2024 PRODUCTION
30	CERN39A0	DOUBLE LOCKING SPACER	4		
31	ZB561OAM	WASHER M6x11.5x0.8 BRASS NICKEL	1		
32	CENX94A0	C-RING STW-29	1		
33	1A0ZV3A0	POWER SUPPLY CODE 3200MM	1		PREVIOUS CODE: CADQ71B0



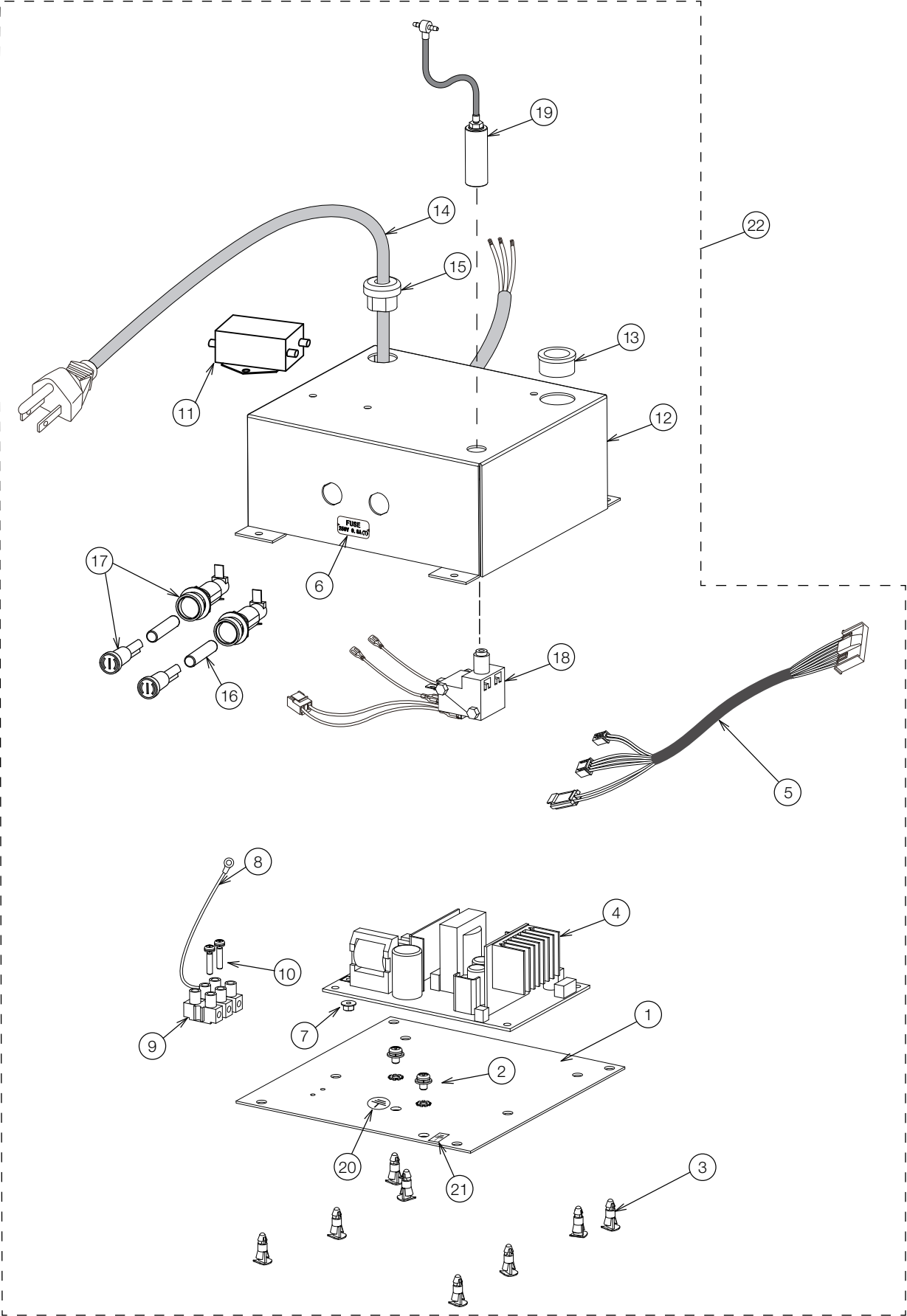
NO.	PARTS NO.	DESCRIPTION	QTY	APPLICABLE SERIAL NO.	NOTE
1	1A0STYC0	SENSOR/MANUAL MODE SWITCH ASSY WITH WIRE	1		
2	CEEN94A0	FUSE 250V 0.8A (T)	2		
3	CERN39A0	DOUBLE LOCKING SPACER	4		
4	ZA887LPY	PAN HEAD SEMS SCREW 2P M4x8 CHROME	4		
5	ZB511LAY	SPRING WASHER M4 CHROME	1		
6	1A08AJC0	NOISE FILTER WITH WIRE	1		
7	DESR05A0	SPACER	4		
8	1A07YUA0	EARTH LABEL	1		
9	1G0AQAA0	POWER SUPPLY BOX ASSY			FROM APRIL 2024 PRODUCTION
10	1E02HPA0	TRUSS M4x8 CN80	4		
11	1E02E9A0	METAL SPACER	4		
12	1E09JTA0	ROCKER SWITCH	1		FROM APRIL 2024 PRODUCTION
13	1G0803E0	LIGHT CONTROL PCB	1		
14	1G06SAC0	POWER PCB	1		
15	AEFR93B0	FUSE HOLDER F-400-01A2	2		
16	1P080CA0	ROCKER SWITCH WITH BOX AND HARNESS (D105/CN8	1		TILL MARCH 2024 PRODUCTION
17	-	DISCONTINUED. FOR REPLACEMENT, PLEASE ORDER NO.16.	1		
18	CAMT05A0	EARTH MARK (N-7)	1		



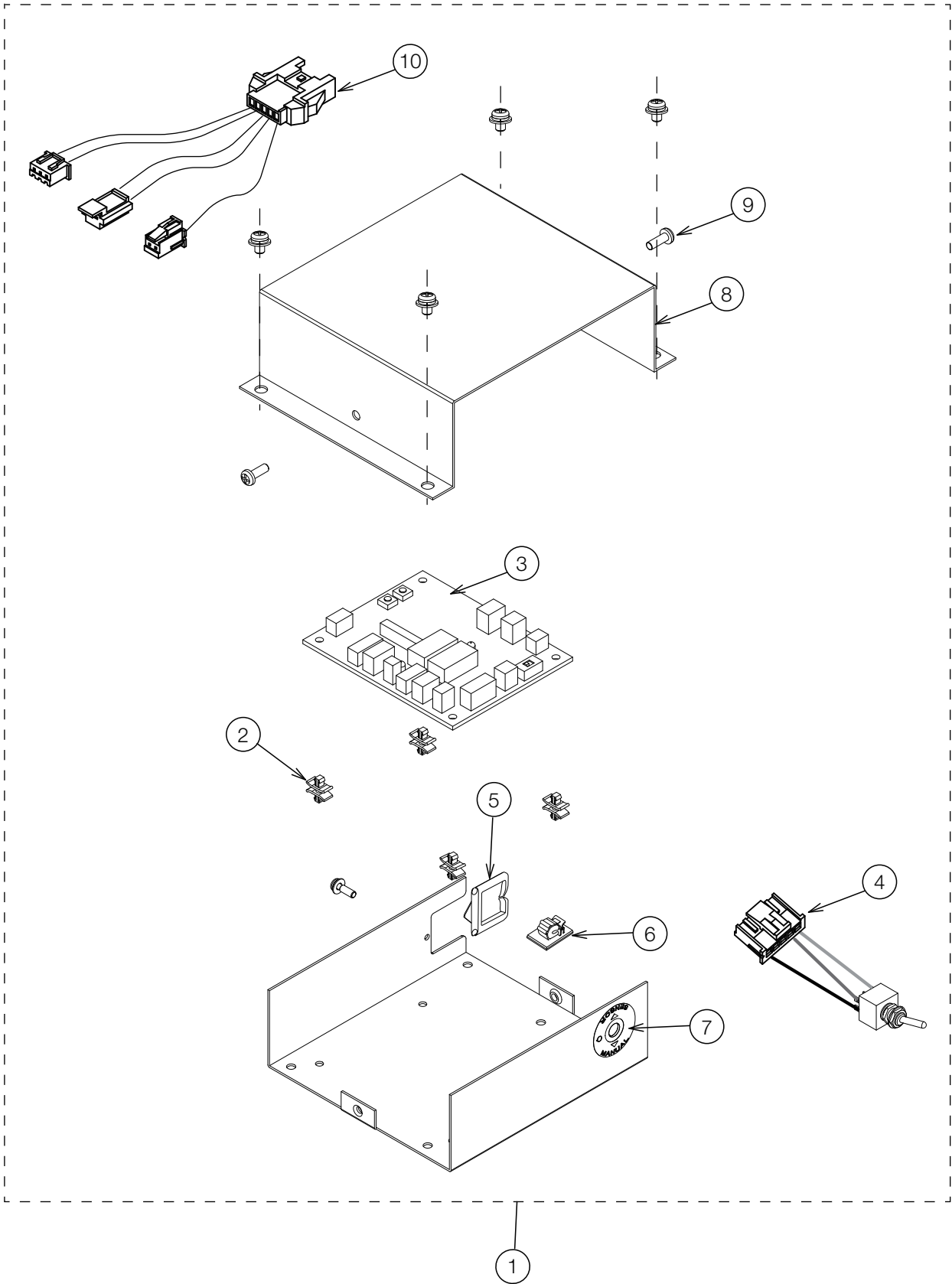
NO.	PARTS NO.	DESCRIPTION	QTY	APPLICABLE SERIAL NO.	NOTE
1	1A07Z8A0	PLATE FOR POWER PCB	1		
2	DESR05A0	SPACER	4		
3	1G06SAC0	POWER PCB	1		
4	1E02FBA0	SNAP COLOR BUSH	2		
5	CAEP84B0	FUSE LABEL 0.8 A (T)	1		
6	1A0SUNA0	TRUNK LINE FOR SENSOR/MANUAL SWITCH (D106QU)	1		
7	1A0STXA0	TRUNK LINE FOR ADJUST PULSE (D101/102)	1		
8	1A07MRA0	LED MODULE RELAY CODE (POWER SOURCE SIDE)	1		
9	CERN39A0	DOUBLE LOCKING SPACER WLS-04-0	4		
10	1G07PBE0	SENSOR CONTROL PCB	1		
11	1A0871A0	SERIAL COMMUNICATION CODE	1		
12	1A08AGC0	NOISE FILTER WITH WIRE	1		
13	AEFR93B0	FUSE HOLDER F-400-01A2	1		
14	CEEN94A0	FUSE 250V 0.8A(T)	1		
15	1A07Z9B0	POWER PCB COVER (QUOLIS)	1		



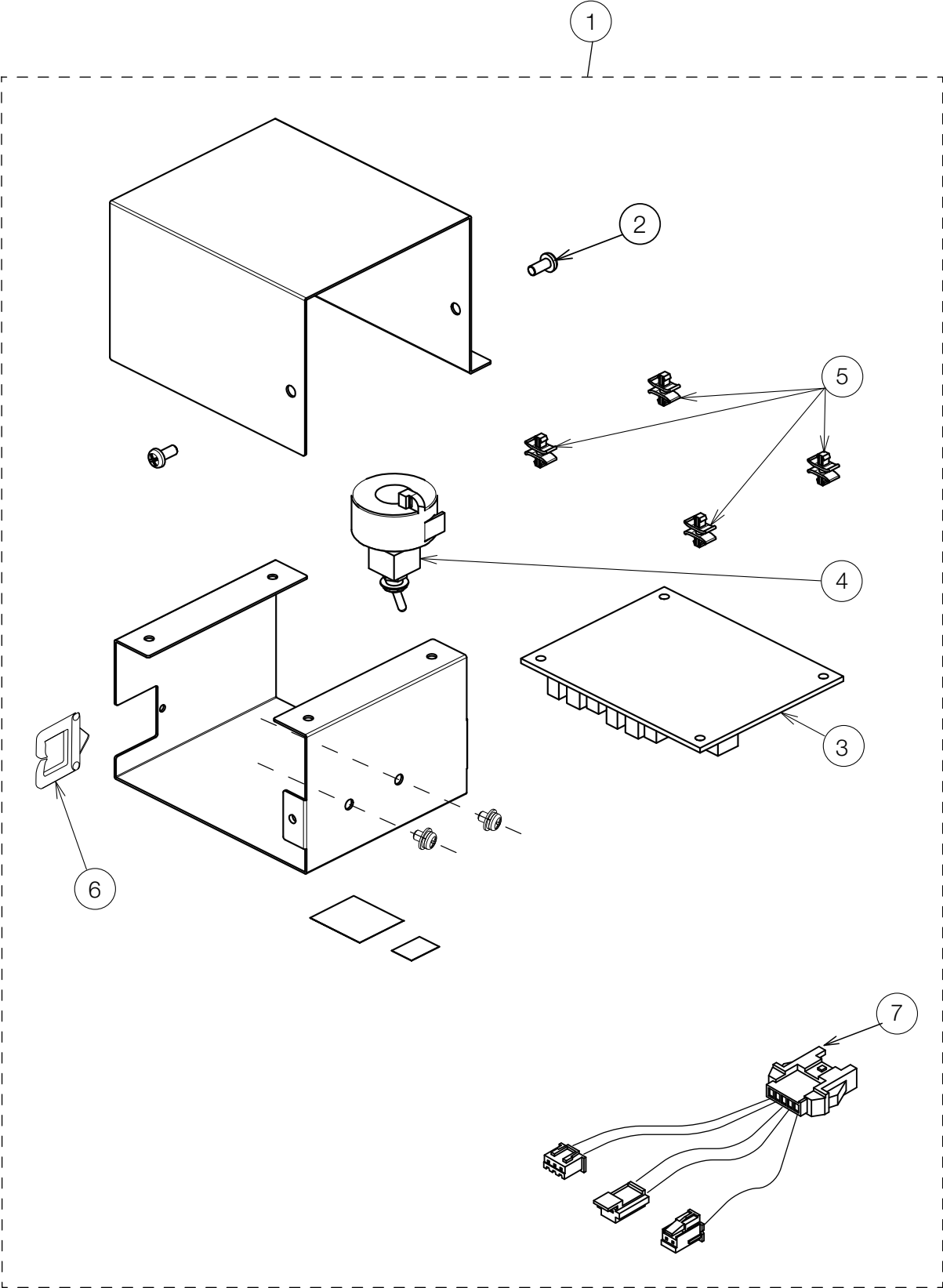
NO.	PARTS NO.	DESCRIPTION	QTY	APPLICABLE SERIAL NO.	NOTE
1	1A086ZA0	SENSOR/MANUAL MODE SWITCH ASSY (WITH WIRE)	1		
2	1A07PYC0	SPACER FOR SENSOR/MANUAL MODE SWITCH	1		
3	1E00V3A0	WASHER M6x16x1.0 CHROME	1		
4	CEGN75A0	EDGE SADDLE	2		
5	1P081KA0	SWITCH BOX ASSY	1		



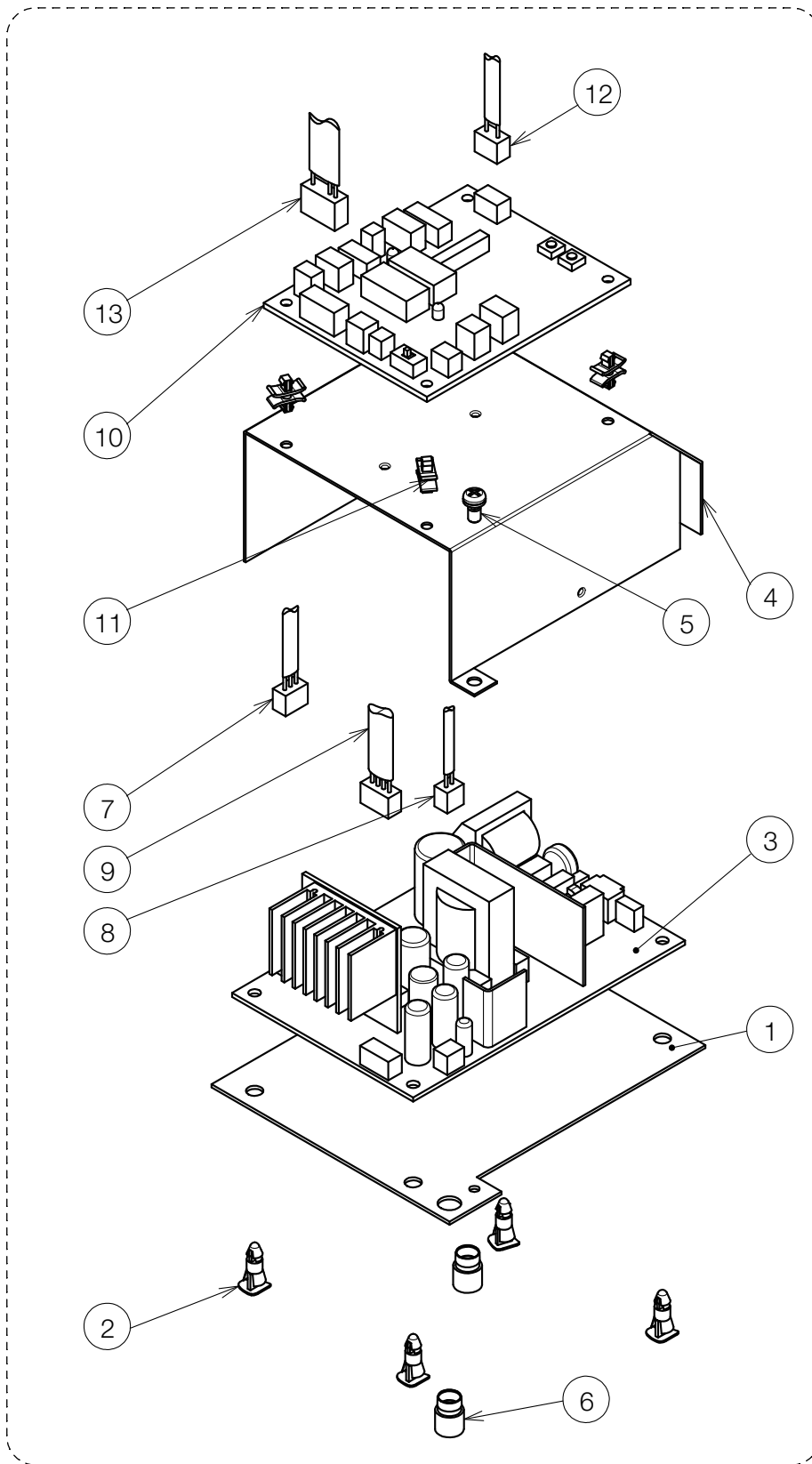
NO.	PARTS NO.	DESCRIPTION	QTY	APPLICABLE SERIAL NO.	NOTE
1	1A08BWA0	POWER SUPPLY PCB BOX FIXING PLATE	1		
2	ZA88JLNM	PAN HEAD SEMS SCREW 3P M4x6 NICKEL	2		
3	DESR05A0	SPACER	8		
4	1G06SAC0	POWER PCB	1		
5	1A0SUF A0	TRUNK LINE FOR POWER PCB(D109)	1		
6	CAEP84B0	FUSE LABEL 0.8A	1		
7	ZA901JAY	FLANGE NUT M3 CHROME	1		
8	CADQ74A0	EARTH CABLE	1		
9	CAML90B0	TERMINAL BLOCK	1		
10	ZA887JTY	PAN HEAD SEMS SCREW 2P M3x14 CHROME	2		
11	1A08AJC0	NOISE FILTER WITH WIRE	1		
12	1A08BVB0	POWER SUPPLY BOX COVER	1		
13	AFFX96A0	CODE BUSH	1		
14	1A10AXA0	POWER SUPPLY CODE 1000L	1		PREVIOUS CODE: 1A04D6A0
15	CESN07A0	RELIEF BUSHING SR-6N3-4	1		
16	CEEN94A0	FUSE 250V 0.8A (T)	2		
17	AEFR93B0	FUSE HOLDER F-400-01A2	2		
18	1G02LKA0	AIR SWITCH BODY ASSY	1		
19	1G02MBA0	AIR SWITCH CYLINDER ASSY WITH TUBING & FITTING	1		
20	CAMT05A0	EARTH MARK	1		
21	1A07YUA0	EARTH LABEL	1		
22	1G082UA0	POWER SUPPLY BOX ASSY	1		



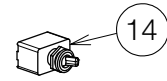
NO.	PARTS NO.	DESCRIPTION	QTY	APPLICABLE SERIAL NO.	NOTE
1	1P081MA0	SWITCH BOX ASSY (RAL9003) FOR D109W-X	1		
	1P081PA0	SWITCH BOX ASSY (CN80) FOR D106G-EV			
2	CERN39A0	DOUBLE LOCKING SPACER	4		
3	1G0803E0	LIGHT CONTROL PCB	1		
4	1A0SUJA0	SENSOR/MANUAL MODE SWITCH ASSY	1		
5	CETN14A0	EDGE SADDLE FOR CABLE PROTECTION	1		
6	CETN13A0	CLAMP WITH SPONGE	1		
7	1A0HMYA0	LABEL FOR SENSOR/MANUAL MODE SWITCH	1		
8	CATN46CR	SWITCH BOX COVER (RAL9003)	1		
	1A0HVWA0	SWITCH BOX COVER (CN80)			
9	1E00VTA0	PAN HEAD SEMS SCREW M4x10 RAL9003	2		
	1A033FA0	PAN HEAD SCREW M4x10 CN80			
10	1A0SUHA0	TRUNK LINE FOR ADJUST PULSE (D109-X)	1		



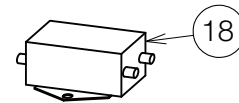
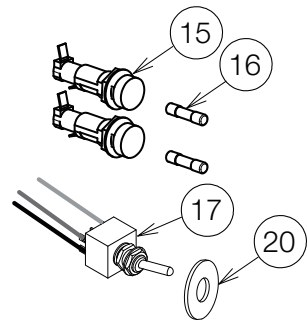
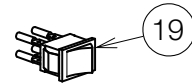
NO.	PARTS NO.	DESCRIPTION	QTY	APPLICABLE SERIAL NO.	NOTE
1	1P081RA0	SWITCH BOX ASSY FOR D109W-XN	1		
2	ZA887LPU	PAN HEAD SEMS SCREW 2P M4x8 SUS	2		
3	1G0803E0	LIGHT CONTROL PCB	1		
4	1A0SUJA0	SENSOR/MANUAL MODE SWITCH ASSY	1		
5	CERN39A0	DOUBLE LOCKING SPACER	4		
6	CETN14A0	EDGE SADDLE FOR CABLE PROTECTION	1		
7	1A0SUHA0	TRUNK LINE FOR ADJUST PULSE (D109-X)	1		



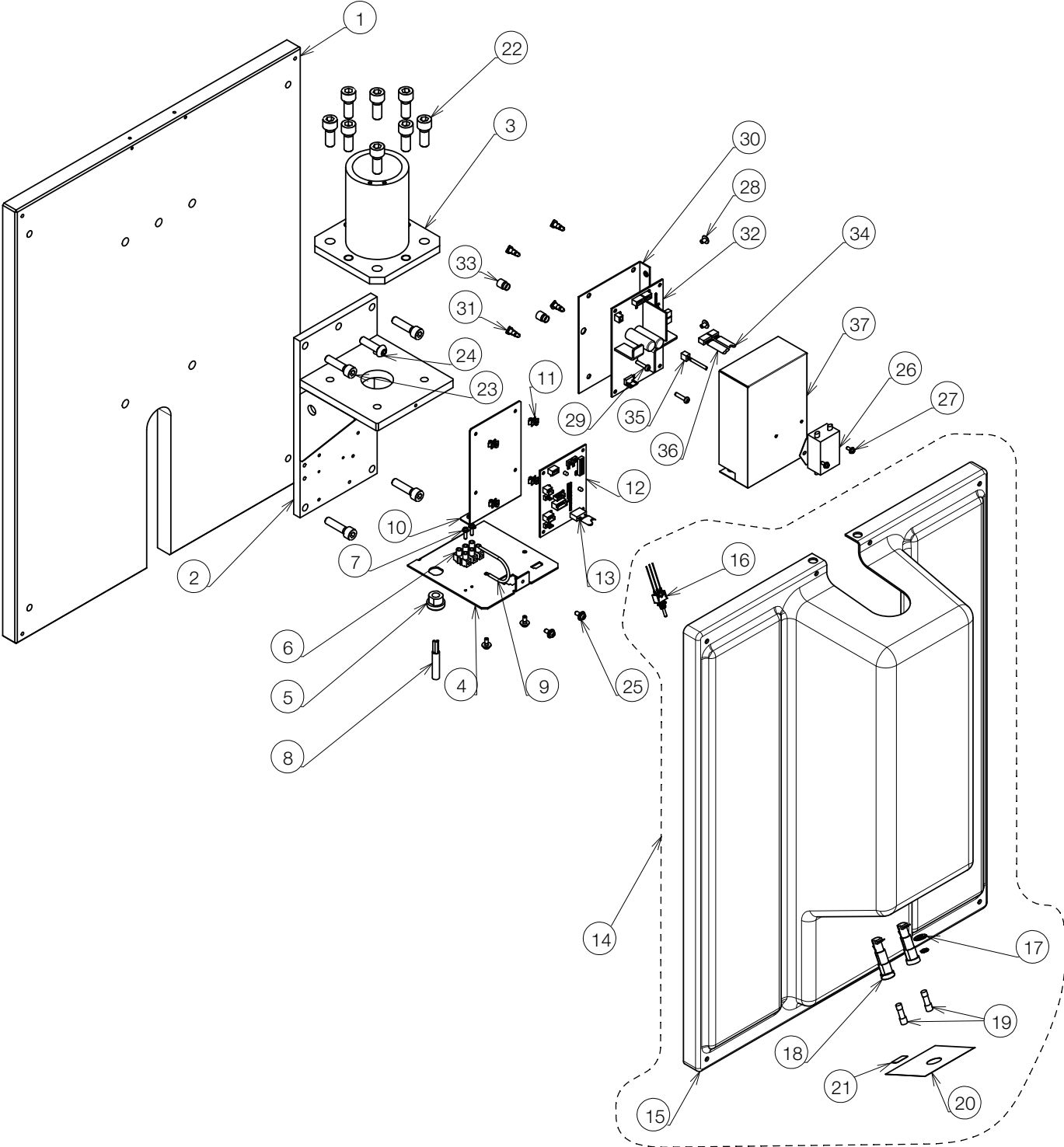
TILL FEBRUARY 2025
PRODUCTION



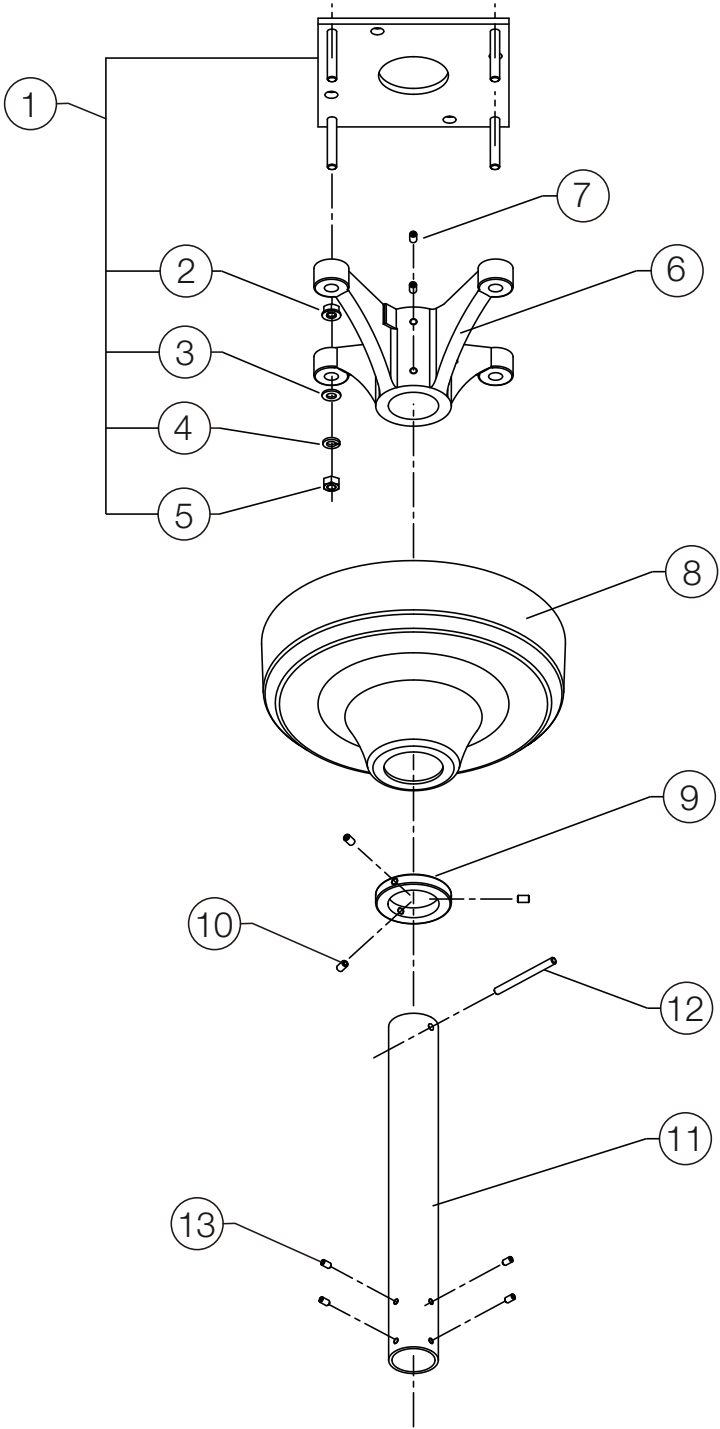
FROM MARCH 2025
PRODUCTION



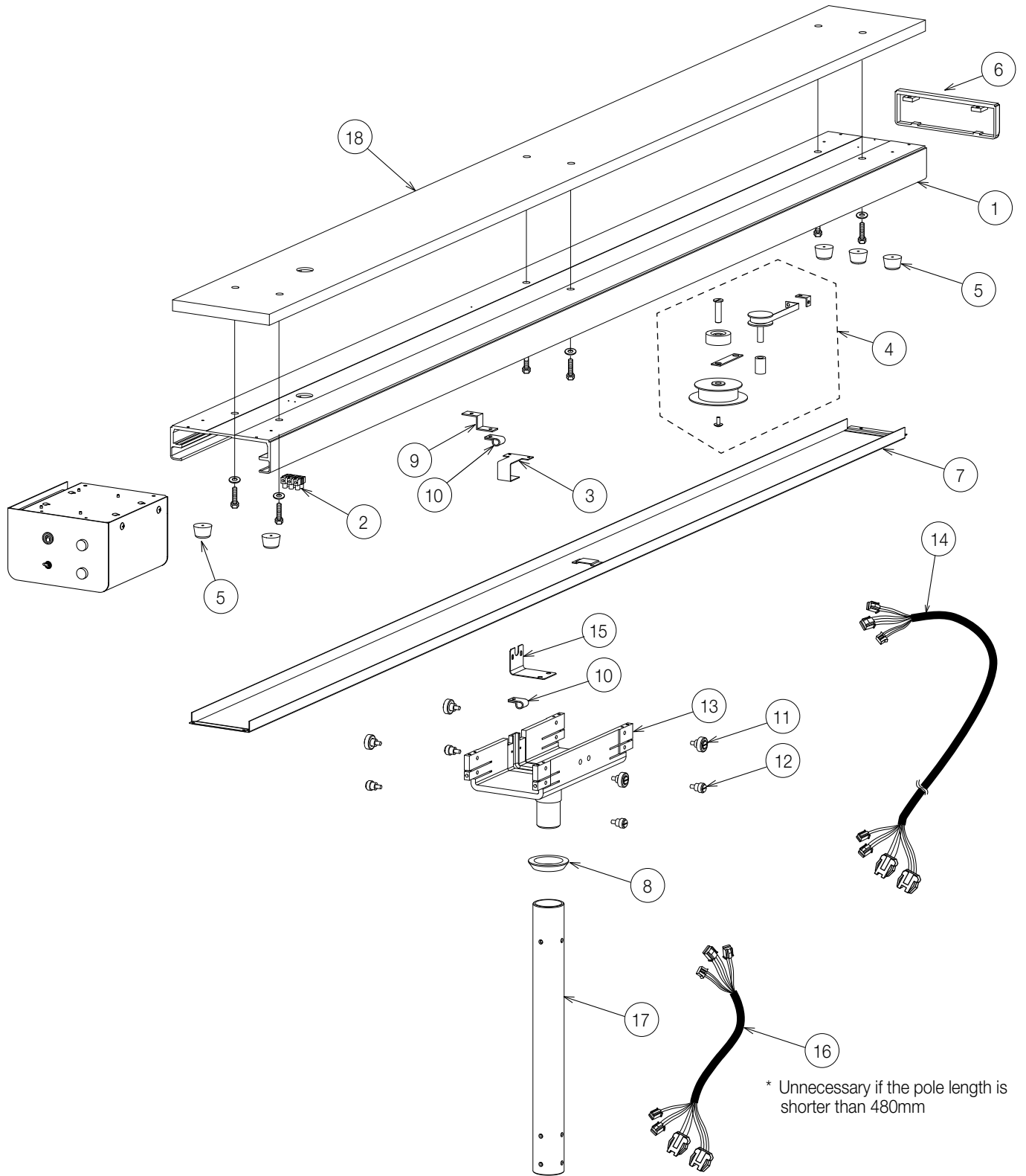
NO.	PARTS NO.	DESCRIPTION	QTY	APPLICABLE SERIAL NO.	NOTE
1	1A07NUB0	PLATE FOR POWER PCB	1		
2	DESR05A0	SPACER	4		
3	1G06SAC0	POWER PCB	1		
4	1A07X1E0	COVER FOR POWER PCB	1		
5	ZA887LPY	PAN HEAD SEMS SCREW 2P M4x8 CHROME	2		
6	1E02FBA0	SNAP COLOR BUSH	2		
7	1A0SU1A0	TRUNK LINE A FOR ADJUST PULSE	1		
8	1A07MPA0	TRUNK LINE A FOR CONTROL PCB	1		
9	1A07MRA0	TRUNK LINE FOR LED MODULE	1		
10	1G0803E0	LIGHT CONTROL PCB	1		
11	CERN39A0	SPACER	4		
12	1A07MQA0	TRUNK LINE B FOR CONTROL PCB	1		
13	1A0SU3A0	TRUNK LINE FOR SENSOR/MANUAL SWITCH	1		
14	CENX56B0	MAIN SWITCH	1		TILL FEBRUARY 2025 PRODUCTION
15	AEFR93B0	FUSE HOLDER	2		
16	CEEN94A0	FUSE 250V 0.8A (T)	2		
17	1A0SU4A0	SENSOR/MANUAL SWITCH ASSY	1		
18	1A09GRD0	NOISE FILTER WITH WIRE (D107)	1		
19	1E09JTA0	ROCKER SWITCH	1		FROM MARCH 2025 PRODUCTION
20	1A07PYC0	SPACER FOR SENSOR/MANUAL MODE SWITCH	1		
21	1G081PA0	POWER SUPPLY BOX ASSY (D107)	1		



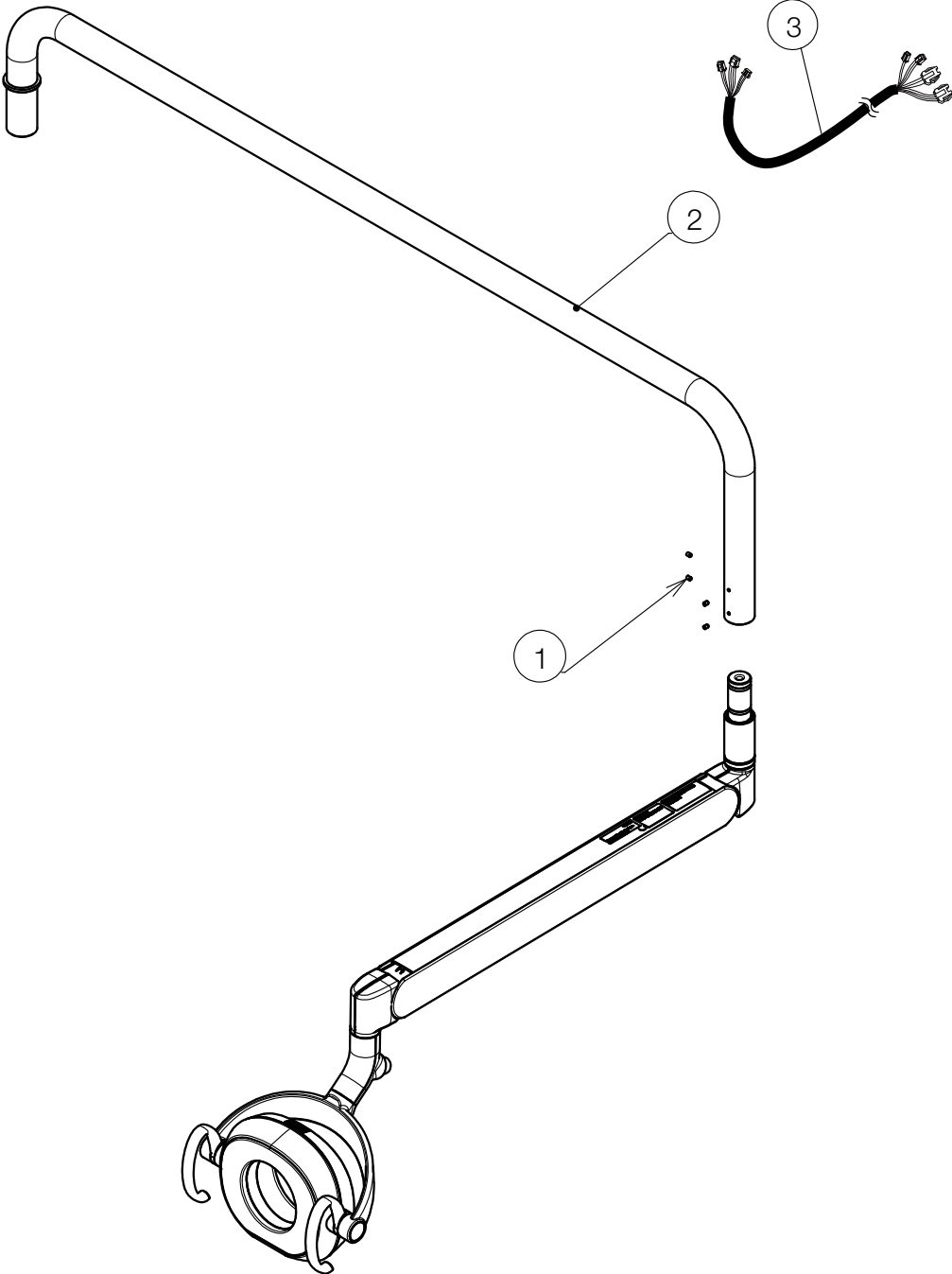
NO.	PARTS NO.	DESCRIPTION	QTY	APPLICABLE SERIAL NO.	NOTE
1	1A0QB3A0	WALL PLATE FOR EPA	1		
2	CATN01D0	BRACKET FOR WALL	1		
3	CATN02B0	BRACKET FOR LIGHT POLE	1		
4	1A0ALWA0	BOTTOM PLATE	1		
5	CESN07A0	BUSH	1		
6	CAML90B0	TERMINAL BLOCK	1		
7	ZA88MJSY	PAN HEAD SEMS SCREW 4P M3x12 CHROME	2		
8	1A04CZA0	CT CODE 2000L	1		
9	1A04CXA0	EARTH WIRE 200L	1		
10	1A0ALXA0	PLATE FOR PCB	1		
11	CERN39A0	SPACER	4		
12	1G0803E0	LIGHT CONTROL PCB	1		
13	1A0SU8A0	TRUNK LINE A FOR SENSOR/MANUAL SWITCH	1		
14	1G0827A0	FRONT COVER SET	1		
15	1A0ALYA0	FRONT COVER CN80	1		
16	1A0SU9A0	SENSOR/MANUAL SWITCH ASSY	1		
17	1A07PYC0	SPACER FOR SENSOR/MANUAL MODE SWITCH	1		
18	AEFR93B0	FUSE HOLDER	2		
19	CEEN94A0	FUSE 250V 0.8A (T)	2		
20	CATP11C0	LABEL FOR SENSOR/MANUAL MODE SWITCH	1		
21	CAEP84B0	FUSE LABEL 0.8 A (T)	1		
22	ZA761QYU	HEX SOCKET HEAD SCREW M10x25 SUS	8		
23	CETN56A0	HEX SOCKET HEAD SCREW M8x32 BLACK CHROME	4		
24	ZSA11PZG	HEX BUTTON HEAD SCREW M8x30 BLACK	1		
25	ZA88JLRY	PAN HEAD SEMS SCREW 3P M4x10 CHROME	4		
26	1A09GHC0	NOISE FILTER WITH WIRE	1		
27	ZA88JJPY	PAN HEAD SEMS SCREW 3P M3x8 CHROME	2		
28	ZA114LNY	TRUSS M4x6 CHROME	2		
29	ZA111LUC	PAN HEAD SCREW M4x16 CHROME	2		
30	1A07X7A0	BRACKET FOR POWER PCB	1		
31	DESR05A0	SPACER	4		
32	1G06SAC0	POWER PCB	1		
33	1E02FBA0	SNAP COLOR BUSH	2		
34	1A0STXA0	TRUNK LINE FOR ADJUST PULSE	1		
35	1A07MPA0	TRUNK LINE A FOR CONTROL PCB	1		
36	1A07MRA0	TRUNK LINE FOR LED MODULE	1		
37	1A07Z9B0	POWER PCB BOX	1		



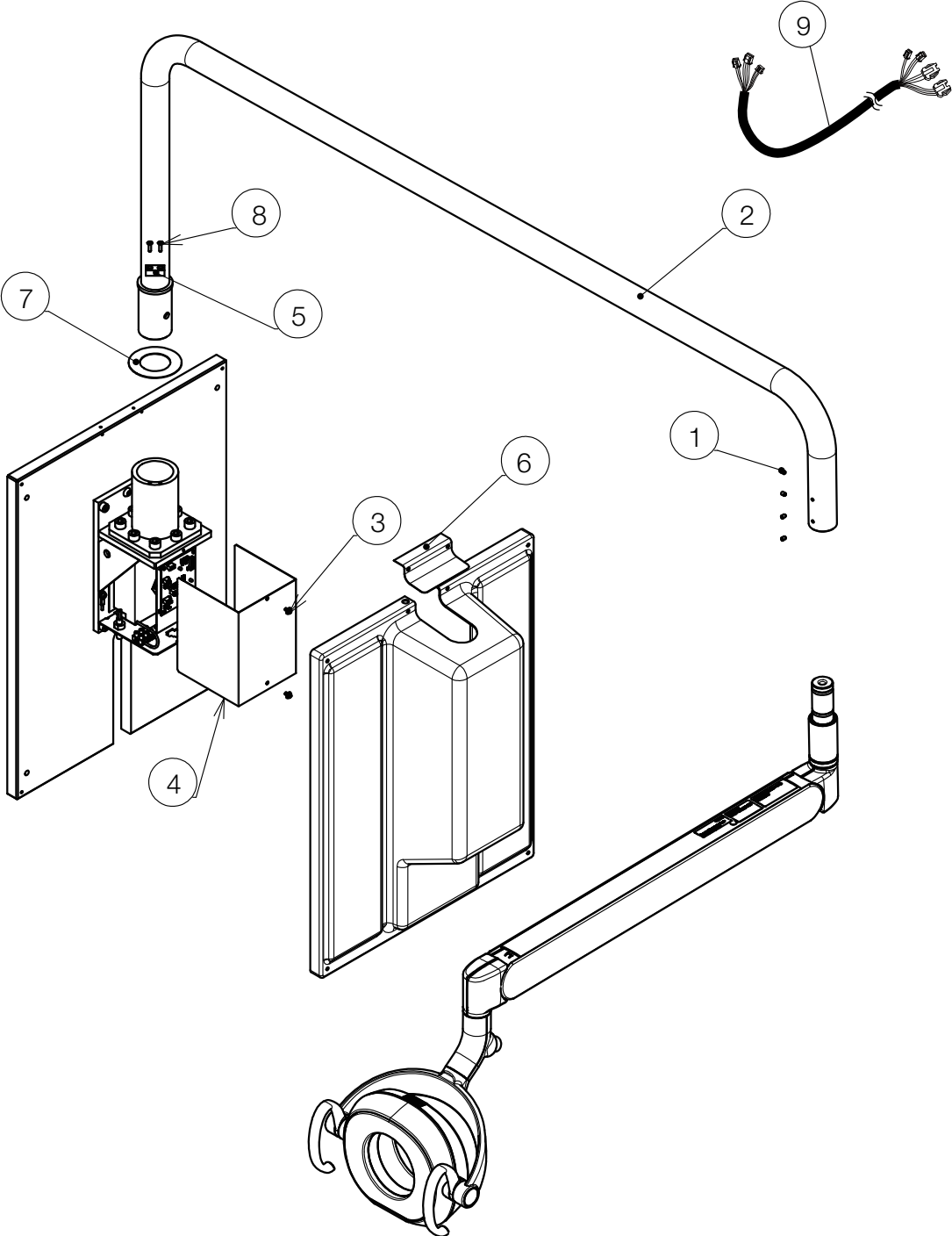
NO.	PARTS NO.	DESCRIPTION	QTY	APPLICABLE SERIAL NO.	NOTE
1 to 5	1P0211A0	MOUNTING PLATE WITH NUT	1		
2	ZA901PAY	FLANGE NUT M8 CHROME	4		FOR ADJUST LEVEL
3	CENE00B0	WASHER M8x22x1.63	4		
4	ZB511PAY	SPRING WASHER M8 CHROME	4		
5	1E00ABA0	U NUT M8	4		
6	TCPA01A0	CEILING FLANGE	1		
7	ZA774OPU	HEX SOCKET SET SCREW (CUP POINT) M6x8 SUS	4		
8	1A0827A0	FLANGE COVER (CN80)	1		
9	CAMG76B0	COVER RING	1		
10	CENB35B0	HEX SOCKET SET SCREW M6x8 (CUP POINT) (RED MEC THREAD LOCK)	3		
11	1G09C4A0	SUSPENSION TUBE SET 380MM (CN80) 8FT	1		
	1G09C6A0	SUSPENSION TUBE SET 530MM (CN80) 8.5FT			
	1G02TNA0	SUSPENSION TUBE SET 680MM (CN80) 9FT			
	1G02TPA0	SUSPENSION TUBE SET 840MM (CN80) 9.5FT			
	1G02TQA0	SUSPENSION TUBE SET 1000MM (CN80) 10FT			
12	CAMK40A0	ROLL PIN 6x70	1		
13	ZA772NRY	HEX SOCKET SET SCREW (TRUNCATED CONE POINT) M5x10 CHROME	4		
-	CGRN38B0	CEILING SCREW SET	1		



NO.	PARTS NO.	DESCRIPTION	QTY	APPLICABLE SERIAL NO.	NOTE
1	1A0824A0	RAIL (HAMMER TONE COATING CN80)	1		
2	CAML90B0	TERMINAL BLOCK	1		
3	CAMG90A0	CENTER COVER HOOK (OP/NDL)	1		
4	1G0133A0	PULLEY ASSY WITH STICKER	1		
5	ABNL23A0	STOPPER	5		
6	1G02EEA0	END CAP ASSY (CN80)	1		
7	1P03CYA0	BOTTOM COVER ASSY (CN80)	1		
8	CAMG95A0	TROLLEY COLLAR	1		
9	CAMV63A0	LEAD WIRE GUIDE (OP/NDL)	1		
10	GENZ15A0	NYLON CLAMP NK-4N	2		
11	1P08PDA0	ROLLER UPPER (OPNDL) ASSY	4		
12	1P08PEA0	ROLLER LOWER (OPNDL) ASSY	4		
13	1A0823D0	TROLLEY (HAMMER TONE COATING, CN80)	1		
14	1A087RA0	TRUNK LINE A (POWER SUPPLY BOX TO YOKE)	1		
15	CAMP73B0	LEAD WIRE COVER	1		
16	1A087TA0	TRUNK LINE C (POWER SUPPLY BOX TO YOKE)	1		
17	1G02U2A0	T POLE SET 380MM (CN80) 8FT	1		
	1G02U3A0	T POLE SET 530MM (CN80) 8.5FT			
	1G02U4A0	T POLE SET 680MM (CN80) 9FT			
	1G02U5A0	T POLE SET 840MM (CN80) 9.5FT			
	1G02U6A0	T POLE SET 1000MM (CN80) 10FT			
18	1A0QSDA0	PALLET (UL TYPE)	1		
-	1G009XA0	PALLET SCREW SET	1		
-	CGRN39B0	TRACK SCREW SET	1		



NO.	PARTS NO.	DESCRIPTION	QTY	APPLICABLE SERIAL NO.	NOTE
1	ZA772NPY	HEX SOCKET SET SCREW (TRUNCATED CONE POINT) M5x8 CHROME	4		
2	1A0AH6A0	LIGHT POLE (CN80)	1		
3	1A09GUB0	LIGHT CABLE IN ARM FOR D107	1		

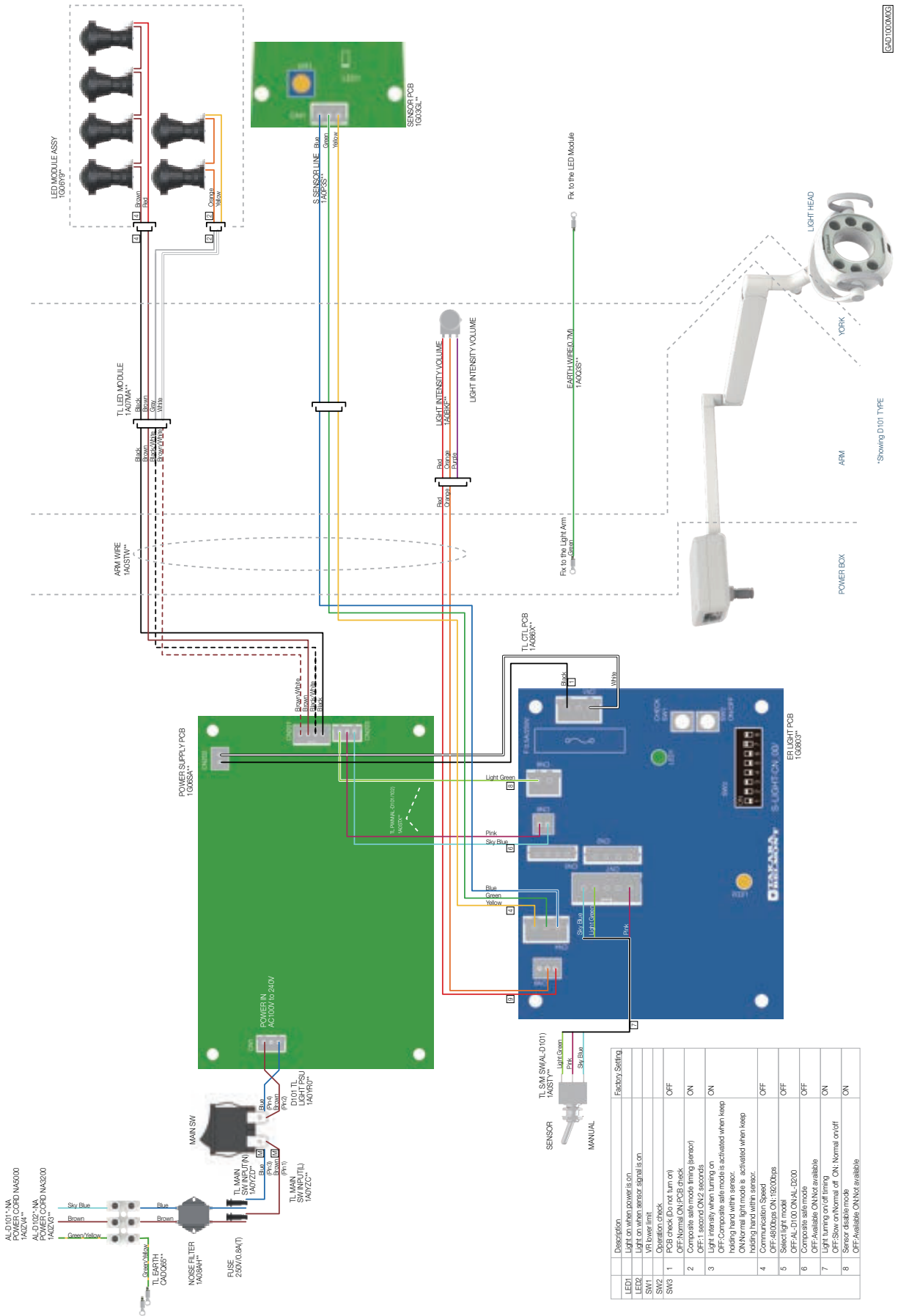


NO.	PARTS NO.	DESCRIPTION	QTY	APPLICABLE SERIAL NO.	NOTE
1	ZA772NPY	HEX SOCKET SET SCREW (TRUNCATED CONE POINT) M5x8 CHROME	4		
2	1A0ALVA0	LIGHT POLE (CN80)	1		
3	ZA88JLPY	PAN HEAD SEMS SCREW 3P M4x8 CHROME	2		
4	CATP03B0	COVER FOR BRACKET	1		
5	CATP04A0	RETAINER METAL	1		
6	1A0ALZA0	FRONT TOP COVER	1		
7	CATN92A0	POLE DISK	1		
8	ZA112L#U	FLAT HEAD SCREW M4x15 SUS	2		
9	1A09GNA0	LIGHT CABLE IN ARM FOR D108	1		

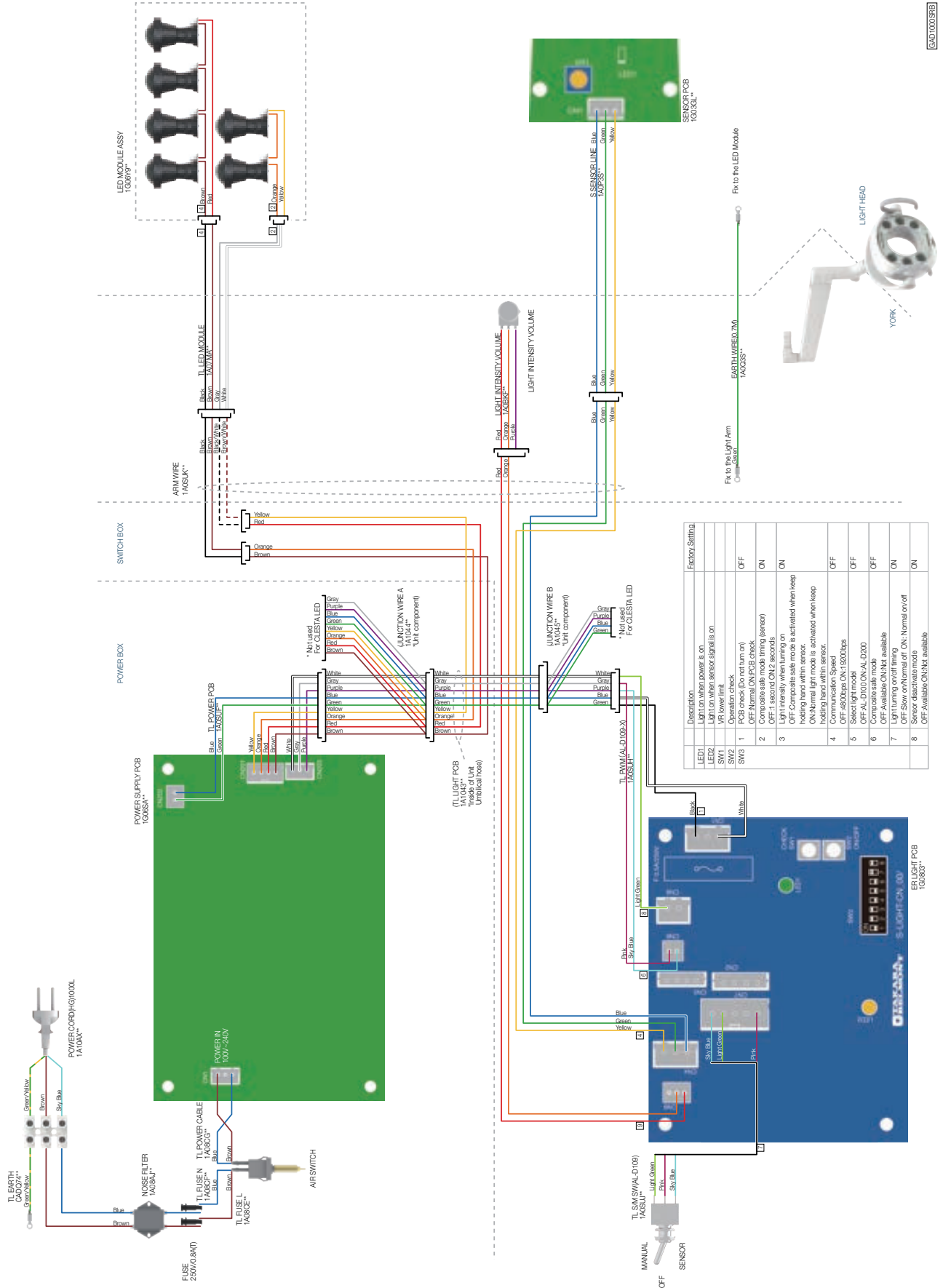
WIRING DIAGRAM

POST MOUNT AND CEILING MOUNT TYPE / AL-D101/102*-NA

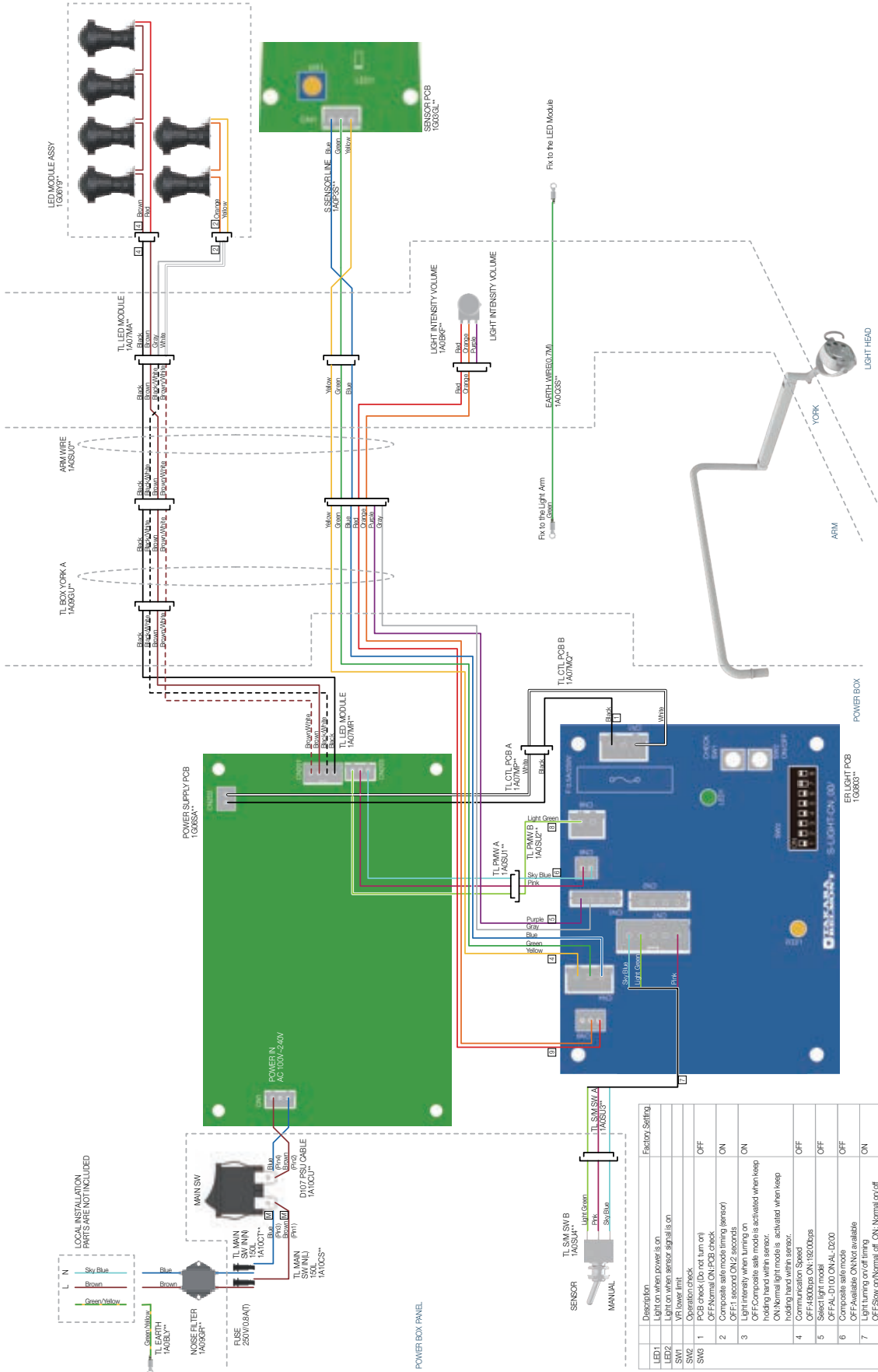
BACK TO TOC



8AD1005B16

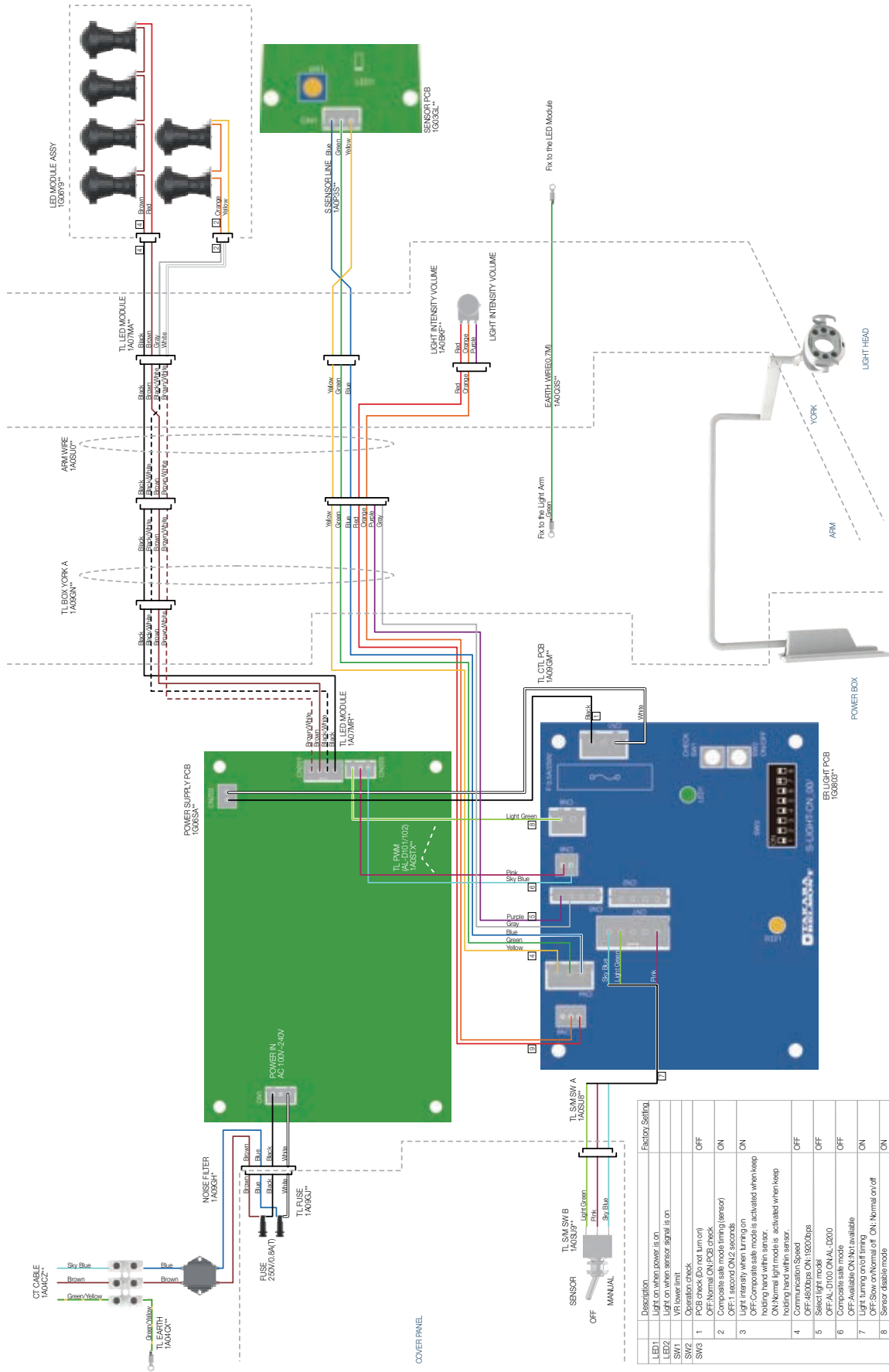


8AD100M23



	Description	Factory Setting
LED1	Light on when power is on	
LED2	Light on when sensor signal is on	
SW1	VFL lower limit	
SW2	Operation check	
SW3	1 PCB check (Do not turn on) OFF:Normal ON:PCB check	OFF
SW4	2 Composite alarm mode timing (sensor) OFF:Sensor check ON:Sensor check	ON
	3 Light intensity when turn on OFF:Composite safe mode is activated when keep holding hand with sensor. ON:Normal light mode is activated when keep holding hand with sensor.	ON
	4 Communication Speed	OFF
	5 OFF:1500bps ON:1520bps	OFF
	6 Composite alarm mode OFF:AL_IN ON:AL_DECO	OFF
	7 Light turning on/off timing OFF:Available ON:Not available	OFF
	8 Sensor disable mode OFF:Slow on/Normal off ON:Normal on/off	ON
		OFF:Available ON:Not available

CAUTION



Factory Setting	
LED1	Light on when power is on
LED2	Light on when sensor signal is on
SW1	VN lower limit
SW2	Operation check
SW3	1 PCB check (Do not turn on)
	2 OFF: Repaso safety (ring sensor)
	3 OFF: Normal ON: PCB check
	4 OFF: Normal ON: PCB check
	5 OFF: Composite safe mode is activated when keep holding hand within sensor.
	6 ON: Normal light mode is activated when keep holding hand within sensor.
	7 OFF: 800bps ON: 1520bps
	8 OFF: 800bps ON: 1520bps
	9 OFF: AL-D101 ON: AL-D102
	10 OFF: Composite safe mode
	11 OFF: Available ON: Not available
	12 OFF: Light turning on/off timing
	13 OFF: Slow on/Normal off ON: Normal on/off
	14 Sensor disable mode
	15 OFF: Available ON: Not available

REVISION RECORD

DATE		CONTENT
23-Mar-20	1st	Publish
14-Apr-21	2nd	Regularly update and add light adaptor
22-Sep-22	3rd	Regularly update
22-Apr-24	4th	Regularly update
10-Feb-25	5th	Regularly update



Importer in U.S.A.

BELMONT EQUIPMENT,

Division of Takara Belmont USA, Inc.

101 Belmont Drive, Somerset, New Jersey 08873 U.S.A.

TEL : (732) 469-5000 / (800) 223-1192

FAX : (732) 356-1035

Importer in Canada

TAKARA COMPANY, CANADA, LTD.

2455 Meadowvale Blvd. Mississauga, Ontario L5N 5S2, Canada

TEL : (905) 816-8965

www.belmont.ca

TAKARA BELMONT CORPORATION

2-1-1, Higashishinsaibashi, Chuo-ku, Osaka, 542-0083, Japan

TEL : +81-6-6213-5945

FAX : +81-6-6212-3680

