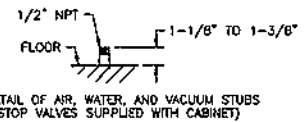
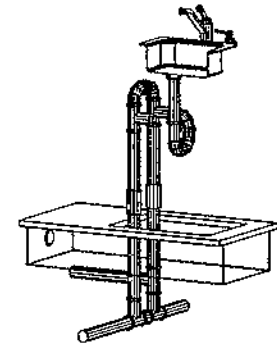
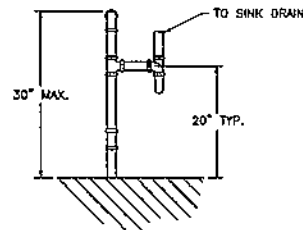
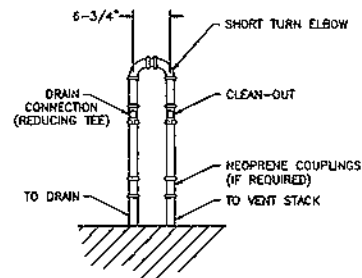


NOTE: PLAN AND ELEVATION VIEWS ARE FOR REFERENCE ONLY. SEE INSTALLATION MANUAL FOR DETAILED INFORMATION.



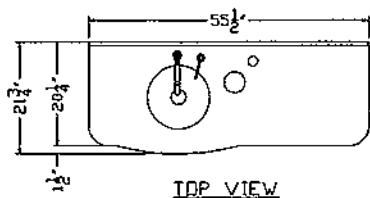
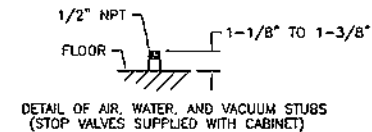
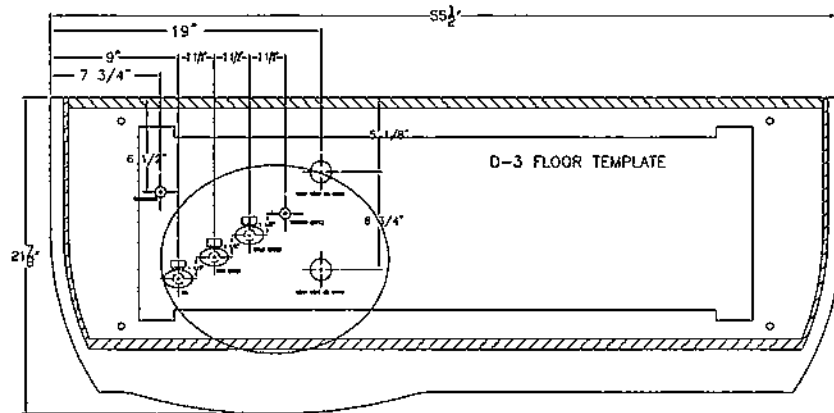
**PLUMBING NOTES**

1-1/2" DRAIN SHOWER SIZE MAY VARY ACCORDING TO LOCAL CODE.

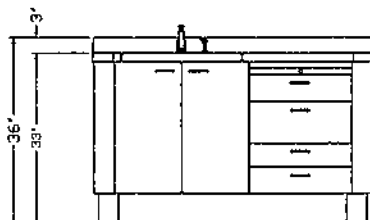
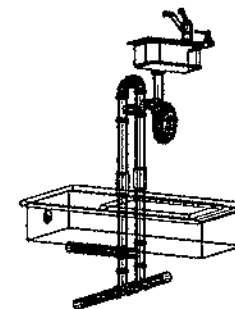
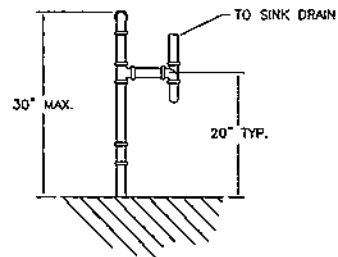
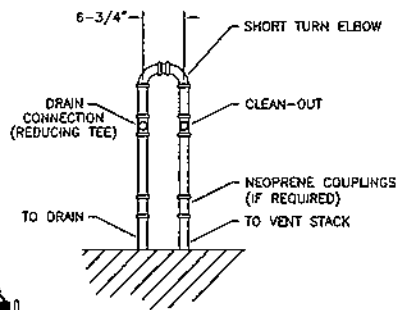
IT IS THE RESPONSIBILITY OF THE INSTALLER TO CONFIRM THAT THE INSTALLATION MEETS LOCAL CODE WITH REGARD TO MATERIALS, VENTING, ETC.

KOKEN MANUFACTURING ASSUMES NO RESPONSIBILITY FOR MEASUREMENTS SUBMITTED TO THEM BY OTHERS - NOR FOR THE CORRECT LOCATION OF ELECTRICAL SOURCES OR CORRECT AMPERAGE REQUIRED. PLUMBING MEASUREMENTS ON THIS DRAWING ARE FOR "ROUGHING IN" ONLY. THESE ITEMS, AS WELL AS LOCAL CODE REGULATIONS, SHOULD BE CHECKED WITH THE ARCHITECT OR PROPER CONTRACTOR BEFORE WORK IS STARTED.

REV.	DATE	DESCRIPTION	BY
KOKEN MANUFACTURING CO., INC. ST. LOUIS, MISSOURI			
D-1 FLOOR TEMPLATE			
DRAWN BY: L. Uchfeld		SCALE: 1/4" = 1'	DRAWING NO.:
CHK'D.:		DATE: 5/27/2003	P11343



IDP VIEW



FRONT VIEW



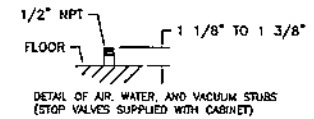
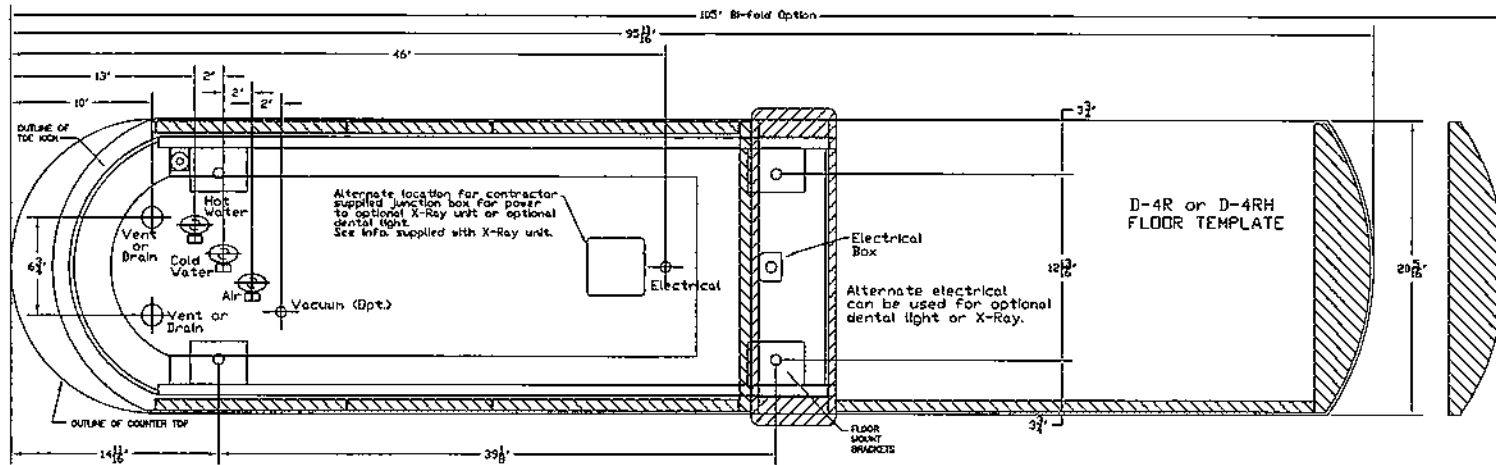
RIGHT SIDE VIEW

NOTE: PLAN AND ELEVATION VIEWS ARE FOR REFERENCE ONLY. SEE INSTALLATION MANUAL FOR DETAILED INFORMATION.

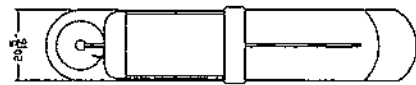
**PLUMBING NOTES**  
 1-1/2" DRAIN SHOWN; SIZE MAY VARY ACCORDING TO LOCAL CODE.  
 IT IS THE RESPONSIBILITY OF THE INSTALLER TO CONFIRM THAT THE INSTALLATION MEETS LOCAL CODE WITH REGARD TO MATERIALS, VENTING, ETC.

KOKEN MANUFACTURING ASSUMES NO RESPONSIBILITY FOR MEASUREMENTS SUBMITTED TO THEM BY OTHERS - NOR FOR THE CORRECT LOCATION OF ELECTRICAL SOURCES OR CORRECT AMPERAGE REQUIRED. PLUMBING MEASUREMENTS ON THIS DRAWING ARE FOR "ROUGHING IN" ONLY. THESE IDEAS, AS WELL AS LOCAL CODE REGULATIONS, SHOULD BE CHECKED WITH THE ARCHITECT OR PROPER CONTRACTOR BEFORE WORK IS STARTED.

REV.	DATE	DESCRIPTION	BY
KOKEN MANUFACTURING CO., INC. ST. LOUIS, MISSOURI			
MATERIAL:		TITLE	
FINISH:		D-3 FLOOR TEMPLATE	
DESIGN BY	L. Uchfield	SCALE	1=1
DRAWN BY		DATE	5/27/2003
			DRAWING NO. P11344

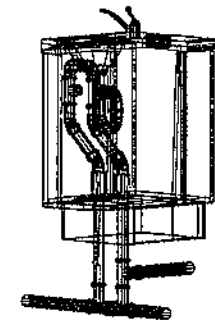
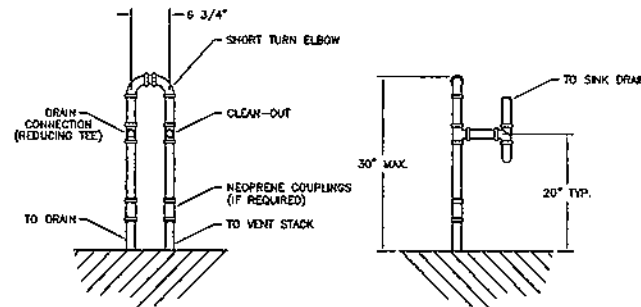


NOTE: PLAN AND ELEVATION VIEWS ARE FOR REFERENCE ONLY. SEE INSTALLATION MANUAL FOR DETAILED INFORMATION.

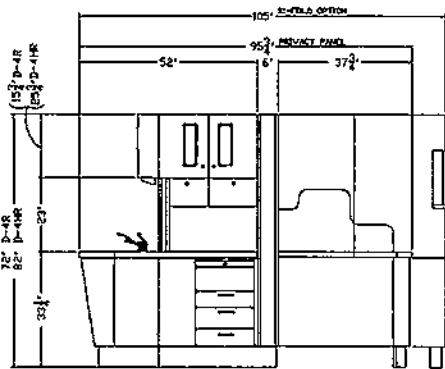


TOP VIEW

105\"/>



LEFT SIDE VIEW



FRONT VIEW

105\"/>

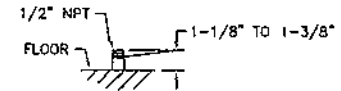
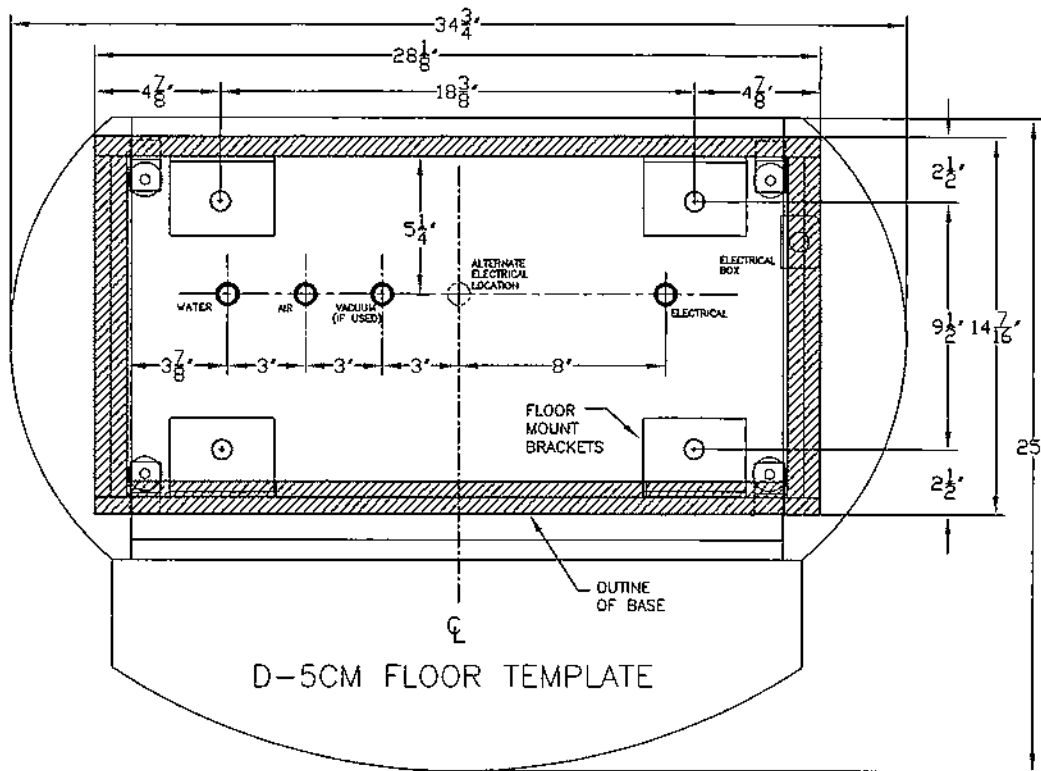
**PLUMBING NOTES**

1-1/2\"/>

IT IS THE RESPONSIBILITY OF THE INSTALLER TO CONFIRM THAT THE INSTALLATION MEETS LOCAL CODE WITH REGARD TO MATERIALS, VENTING, ETC.

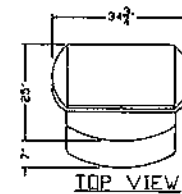
KOKEN MANUFACTURING ASSUMES NO RESPONSIBILITY FOR MEASUREMENTS SUBMITTED TO THEM BY OTHERS - NOR FOR THE CORRECT LOCATION OF ELECTRICAL SOURCES OR CORRECT AMPERAGE REQUIRED. PLUMBING MEASUREMENTS ON THIS DRAWING ARE FOR "ROUGHING IN" ONLY. THESE IDEAS, AS WELL AS LOCAL CODE REGULATIONS, SHOULD BE CHECKED WITH THE ARCHITECT OR PROPER CONTRACTOR BEFORE WORK IS STARTED.

REV.	DATE	DESCRIPTION	BY
KOKEN MANUFACTURING CO., INC. ST. LOUIS, MISSOURI			
MATERIAL:		TITLE	
FINISH:		D-4R & D-4RH FLOOR TEMPLATE	
DRAWN BY	SCALE	1=1	DRAWING NO.
CHK'D.:	DATE	7/11/2003	P11345

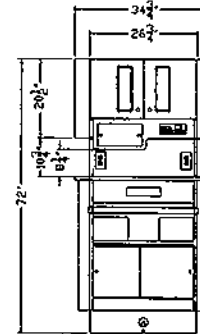


DETAIL OF AIR, WATER, AND VACUUM STUBS  
(STOP VALVES SUPPLIED WITH CABINET)

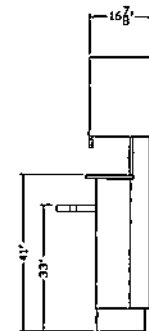
NOTE: PLAN AND ELEVATION  
VIEWS ARE FOR REFERENCE  
ONLY. SEE INSTALLATION  
MANUAL FOR DETAILED  
INFORMATION.



TOP VIEW



FRONT VIEW



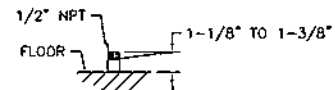
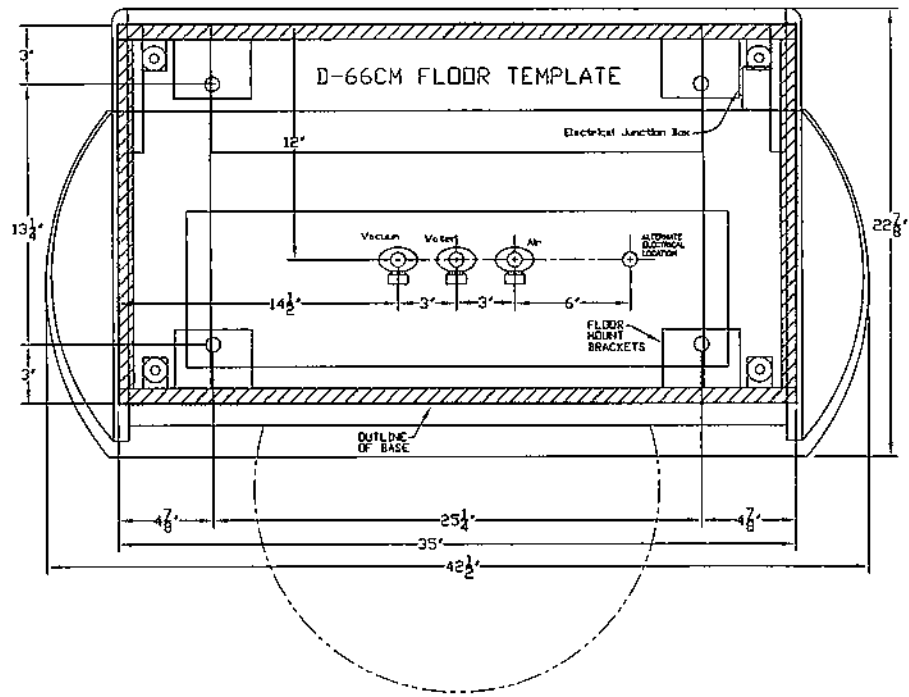
RIGHT SIDE VIEW

**IMPORTANT NOTE:**  
PLUMBING LOCATIONS SHOWN ARE TYPICAL FOR  
DELIVERY SYSTEMS CURRENTLY AVAILABLE. THE  
PLUMBING HARDWARE IS NOT SUPPLIED WITH THE  
CABINETRY; IT IS NOT REQUIRED UNLESS A DELIVERY  
SYSTEM IS BEING INSTALLED. WE RECOMMEND YOU  
REVIEW THE TEMPLATE SUPPLIED BY THE DELIVERY  
SYSTEM MANUFACTURER WHEN PLANNING THIS  
PLUMBING LAYOUT.

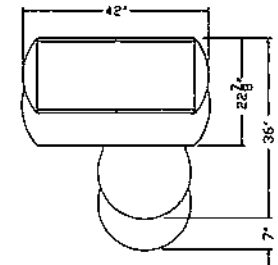
**NOTE: IF A NITROUS ANALGESIA SYSTEM IS  
TO BE INSTALLED, LOCATE THE PIPING IN  
THE AREA INDICATED. BECAUSE OF THE  
DIFFERENCES IN SYSTEM HARDWARE, EXACT  
LOCATIONS MUST BE DETERMINED BY INSTALLER.**

KOKEN MANUFACTURING ASSUMES NO  
RESPONSIBILITY FOR MEASUREMENTS  
SUBMITTED TO THEM BY OTHERS -  
FOR THE CORRECT LOCATION OF  
ELECTRICAL SOURCES OR CORRECT  
APPROXIMATE REQUIRED PLUMBING  
MEASUREMENTS ON THIS DRAWING ARE  
FOR "ROUNDING IN" ONLY.  
THESE DIMS, AS WELL AS LOCAL  
CODE REGULATIONS, SHOULD BE  
CHECKED WITH THE ARCHITECT OR  
PROPER CONTRACTOR BEFORE WORK  
IS STARTED.

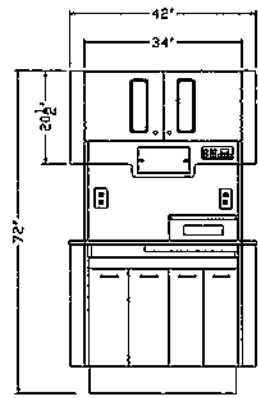
REV.	DATE	DESCRIPTION	BY
KOKEN MANUFACTURING CO., INC. 37. LOUIS, MISSOURI			
MATERIAL:		TITLE: D-5CM FLOOR TEMPLATE	
DRAWN BY: L. Lichtenfeld		SCALE: 1=1	DRAWING NO.: P11346
DATE: 5/23/2003			



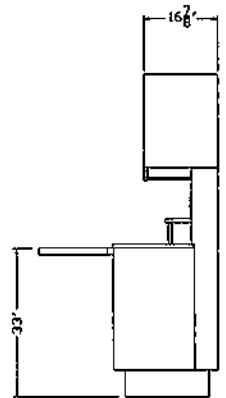
DETAIL OF AIR, WATER, AND VACUUM STUBS  
(STOP VALVES SUPPLIED WITH CABINET)



TOP VIEW



FRONT VIEW



RIGHT SIDE VIEW

NOTE: PLAN AND ELEVATION VIEWS ARE FOR REFERENCE ONLY. SEE INSTALLATION MANUAL FOR DETAILED INFORMATION.

**IMPORTANT NOTE:**  
PLUMBING LOCATIONS SHOWN ARE TYPICAL FOR DELIVERY SYSTEMS CURRENTLY AVAILABLE. THE PLUMBING HARDWARE IS NOT SUPPLIED WITH THE CABINETRY; IT IS NOT REQUIRED UNLESS A DELIVERY SYSTEM IS BEING INSTALLED. WE RECOMMEND YOU REVIEW THE TEMPLATE SUPPLIED BY THE DELIVERY SYSTEM MANUFACTURER WHEN PLANNING THIS PLUMBING LAYOUT.

NOTE: IF A NITROUS ANALGESIA SYSTEM IS TO BE INSTALLED, LOCATE THE PIPING IN THE AREA INDICATED. BECAUSE OF THE DIFFERENCES IN SYSTEM HARDWARE, EXACT LOCATIONS MUST BE DETERMINED BY INSTALLER.

KOKEN MANUFACTURING ASSUMES NO RESPONSIBILITY FOR MEASUREMENTS SUBMITTED TO THEM BY OTHERS NOR FOR THE CORRECT LOCATION OF ELECTRICAL SOURCES OR CORRECT APPROVED REQUIRED PLUMBING MEASUREMENTS ON THIS DRAWING ARE FOR "PROPOSING" ONLY. THESE ITEMS, AS WELL AS LOCAL CODE REGULATIONS, SHOULD BE CHECKED WITH THE ARCHITECT OR PROJECT CONTRACTOR BEFORE WORK IS STARTED.

REV.	DATE	DESCRIPTION	BY
		KOKEN MANUFACTURING CO., INC. BY: LOUIS, MISSOURI	
MATERIAL:		TITLE: D-66CM FLOOR TEMPLATE	
DRAWN BY: L. Ulichfield		SCALE: 1=1	DRAWING NO. P11347
DATE: 5/23/2003			