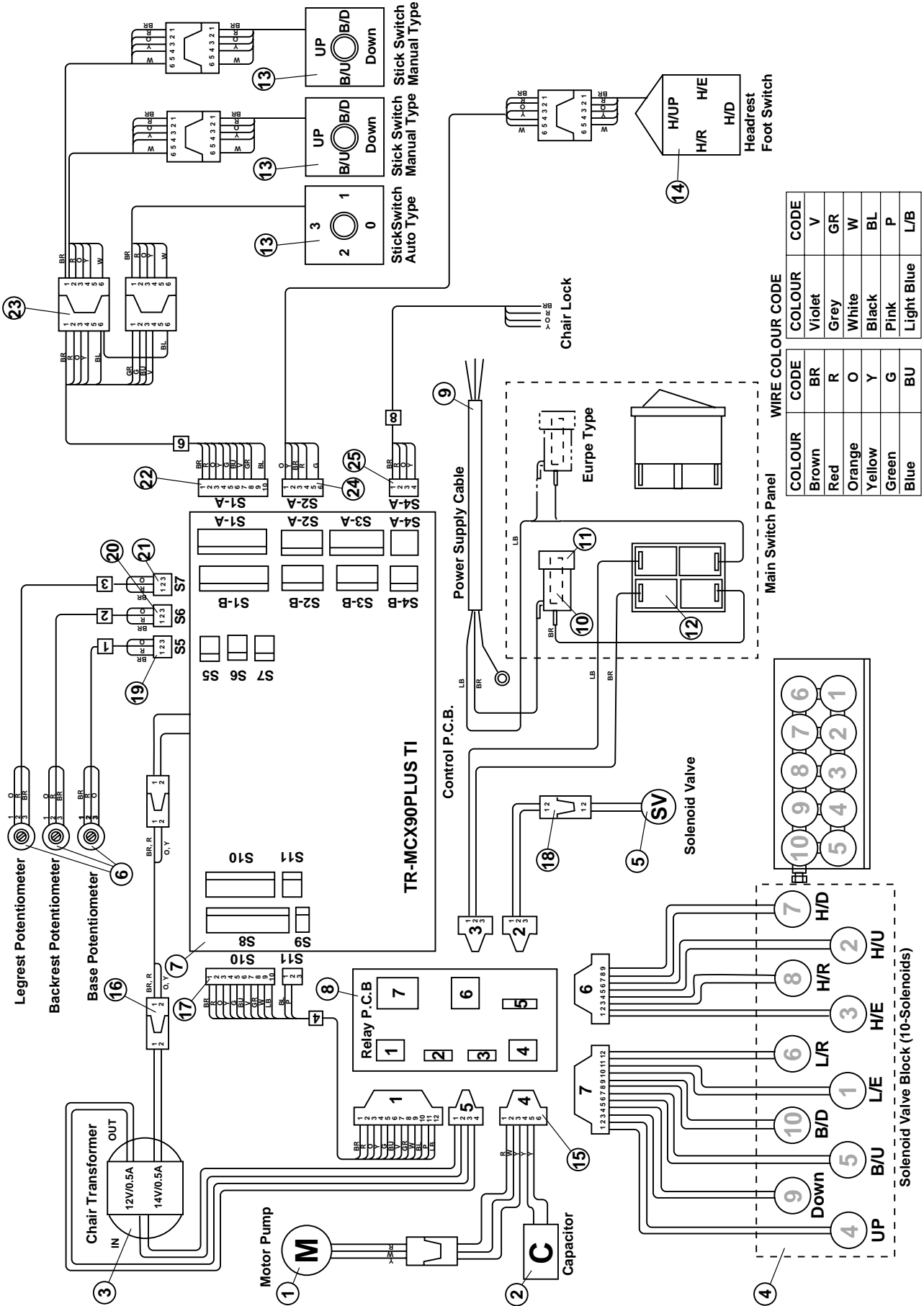


# 12. 039 ELECTRICAL SECTION



COLOUR	CODE
Brown	BR
Red	R
Orange	O
Yellow	Y
Green	G
Blue	BU

COLOUR	CODE
Violet	V
Grey	GR
White	W
Black	BL
Pink	P
Light Blue	L/B

## 12. 039 ELECTRICAL SECTION

### ELECTRIC PARTS SECTION

INDEX NO.	PARTS NO.	DESCRIPTION	Q'TY
1	C04-D6065	Motor Pump 5LP (115V)	1
	C04-D6067	Motor Pump 5LP (220V)	(1)
	C04-D6069	Motor Pump 5LP (230/240v)	(1)
2	C04-X5002	Capacitor (115/220/230/240v)	1
3	C04-X2801	Transformer (115V)	1
	C04-X2105	Transformer (220V)	(1)
	C04-X2106	Transformer (230/240V)	(1)
4	C04-X4202	Solenoid Valve Block (10-Solenoids) (115V)	1
	C04-X4203	Solenoid Valve Block (10-Solenoids) (220/230/240V))(1)	(1)
5	C04-X5802	Solenoid Valve (PT1/4"-PT1/8") (115V)	1
	C04-X5803	Solenoid Valve (PT1/4"-PT1/8") (220/230/240V)	(1)
6	C04-X4281	Potentiometer (5K)	3
7	C04-DALJ01AA	Control P.C.B.	1
8	C04-X6184	Relay P.C.B. (115V)	1
	C04-X6721	Relay P.C.B. (220/230/240V)	(1)
9	C04-X5999	Power Supply Cable (3m)	1
10	C04-X6966	Fuse (10A) (115V)	1
	C04-X6888	Fuse (6.3A) (220/230/240V, Standard Type)	(1)
	Co4-X6888	Fuse (6.3A) (220/230/240V, Europe Type)	(2)
11	C04-DEQR01AA	Fuse Holder (Standard Type)	1
	C04-X6890	Fuse Holder (Europe Type)	(2)
12	C04-DELR10AA	Main Switch (115V)	1
	C04-X6678	Main Switch (220/230/240V)	(1)
13	C04-DD00423S	Stick Switch 4-Way Ass'y	3
14	-----	Headrest Foot Switch Ass'y	1

### ELECTRIC PARTS SECTION

INDEX NO.	PARTS NO.	DESCRIPTION	Q'TY
15	C04-PRO-2 B-02	Wire Harness (Relay P.C.B To Motor & Capacitor)	1
16	C04-PRO-2 B-01	Wire Harness (Control P.C.B to Transformer)	1
17	C04-PRO-2 A-04	Wire Harness (Relay P.C.B to Control P.C.B)	1
18	C04-PRO-2 B-03	Wire Harness (Relay P.C.B to Solenoid Valve)	1
19	C04-PRO-2 A-1	Wire Harness (Control P.C.B to Base Potentiometer)	1
20	C04-PRO-2 A-2	Wire Harness (Control P.C.B to Backrest Potentiometer)	1
21	C04-PRO-2 A-3	Wire Harness (Control P.C.B To Legrest Potentiometer)	1
22	C04-PRO-2 A-06	Wire Harness (Control P.C.B to Stick Switch Connector)	1
23	C04-PRO-2 A-11	Wire Harness (Stick Switch to Stick Switch Connector)	1
24	C04-PRO-2 A-12	Wire Harness (Control P.C.B to Headrest Foot Switch)	1
25	C04-PRO-2 A-15	Wire Harness (Control P.C.B to Chair Lock)	1

September 1997