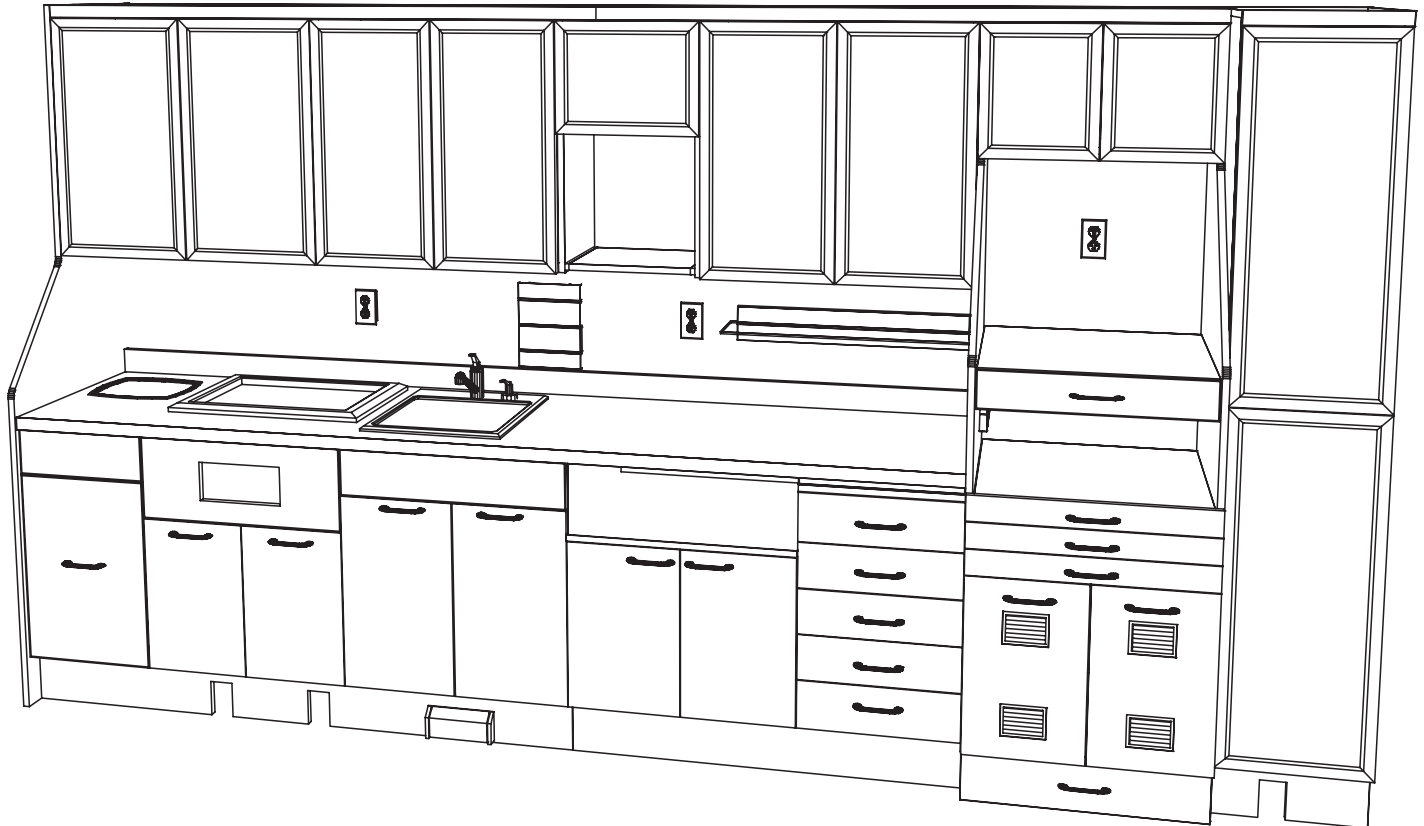


Installation Instructions & Owners Manual

**E-Series Dental Cabinetry
Model: E-155**



Note: Optional Products May be Shown

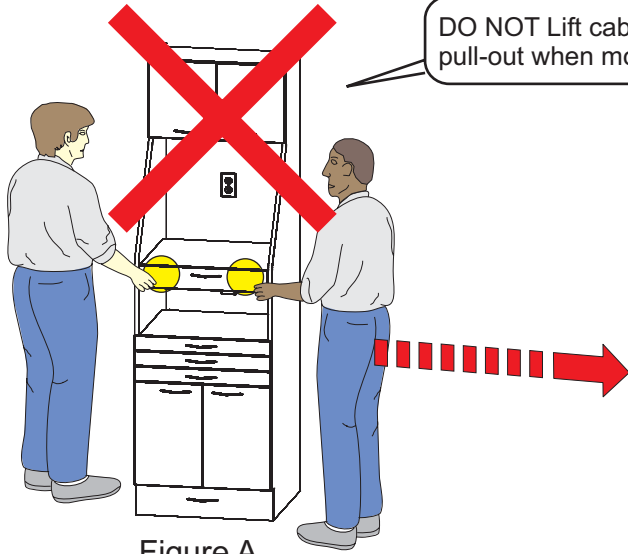
Consumer: Please retain these instructions for future use.



1631 Dr. Martin Luther King Drive
St. Louis, MO 63106
(314) 231-7383 (888) 833-3682
Fax (314) 621-2296
www.belmontequip.com

General Cabinet Handling Information

Model: E-155



DO NOT Lift cabinet by the Ultrasonic pull-out when moving. See Figure A.

Figure A

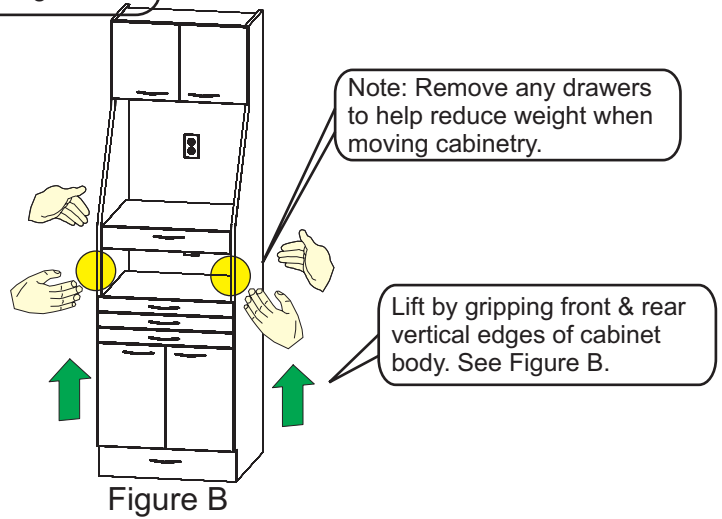


Figure B

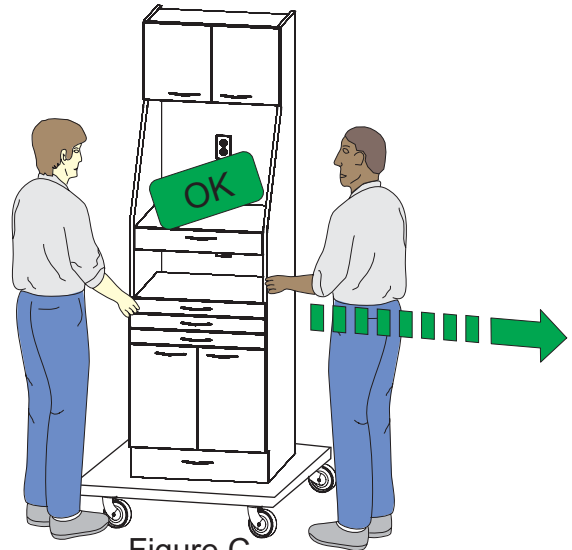


Figure C

Move by using some type of roller dolly, slings or a comparable moving aid. See Figure C and D.

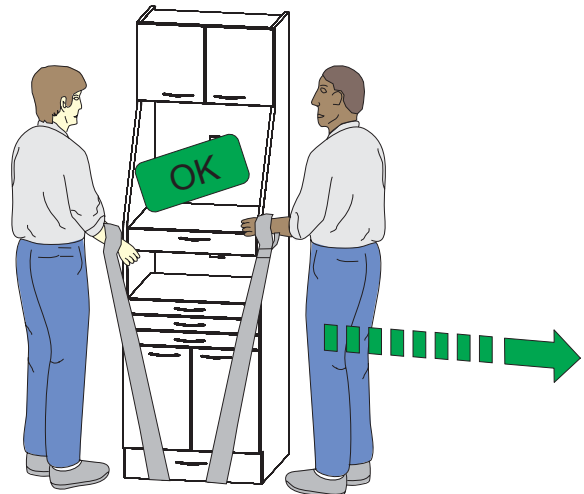


Figure D

Detail Drawings

Model: E-155 (Page 1 of 2)

Elevation/Front View Drawing For General Contractor (G.C.) With Installation & Electrical Notes

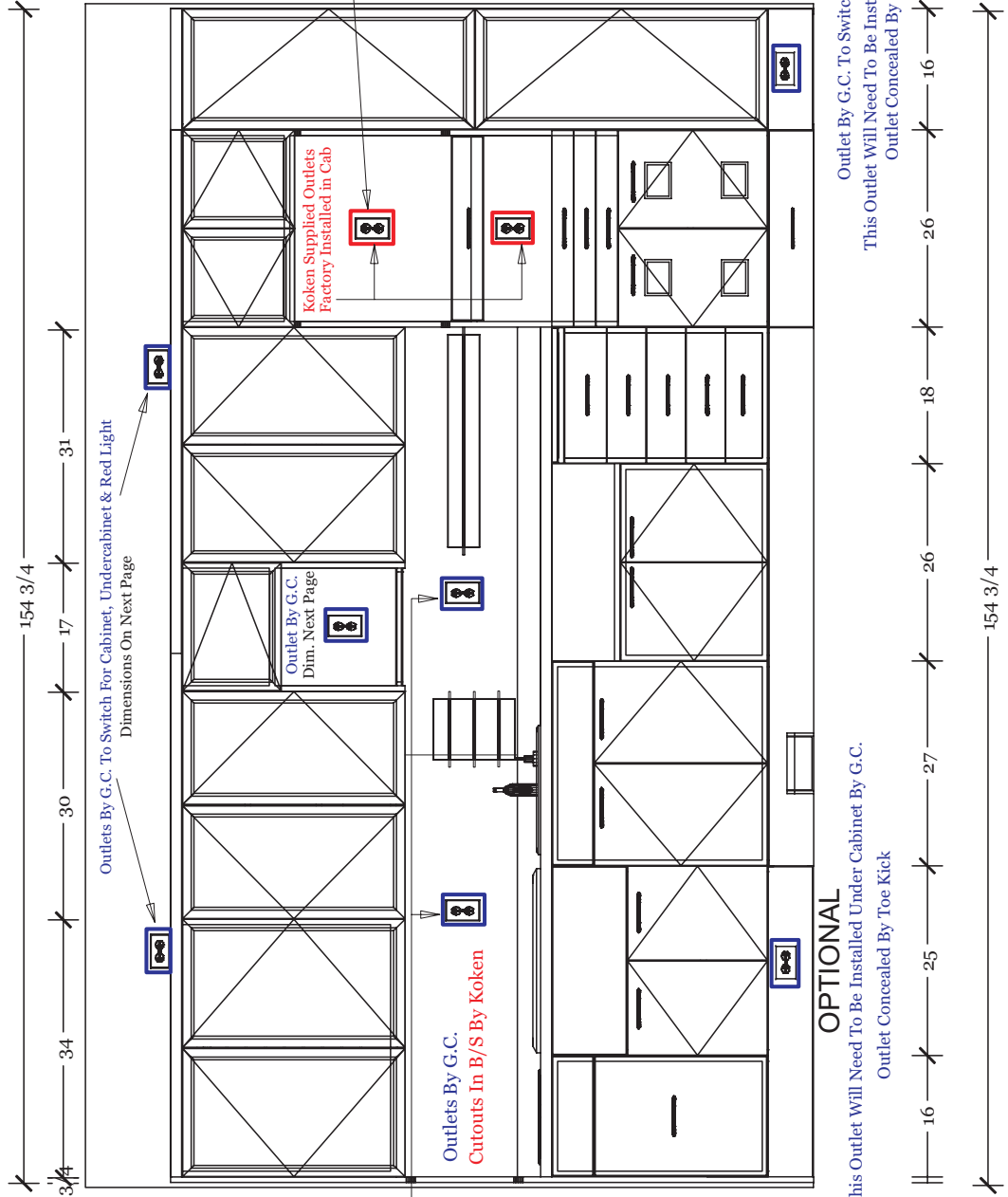
NOTE: Outlets In RED Are Provided By Koken

NOTE: Outlets In BLUE Are Supplied By General Contractor (G.C.)

NOTE: 2x6 Blocking Recommended @82" C/L AFF To Hang Upper Cabinets On Hang Rail

OPTIONAL:

These Outlets To Be Installed POST Install Of Stainless Steel Backsplash By G.C.



Standard E-155 shown

Options and Configurations vary, see specific drawings to assist with setting up your custom configuration.

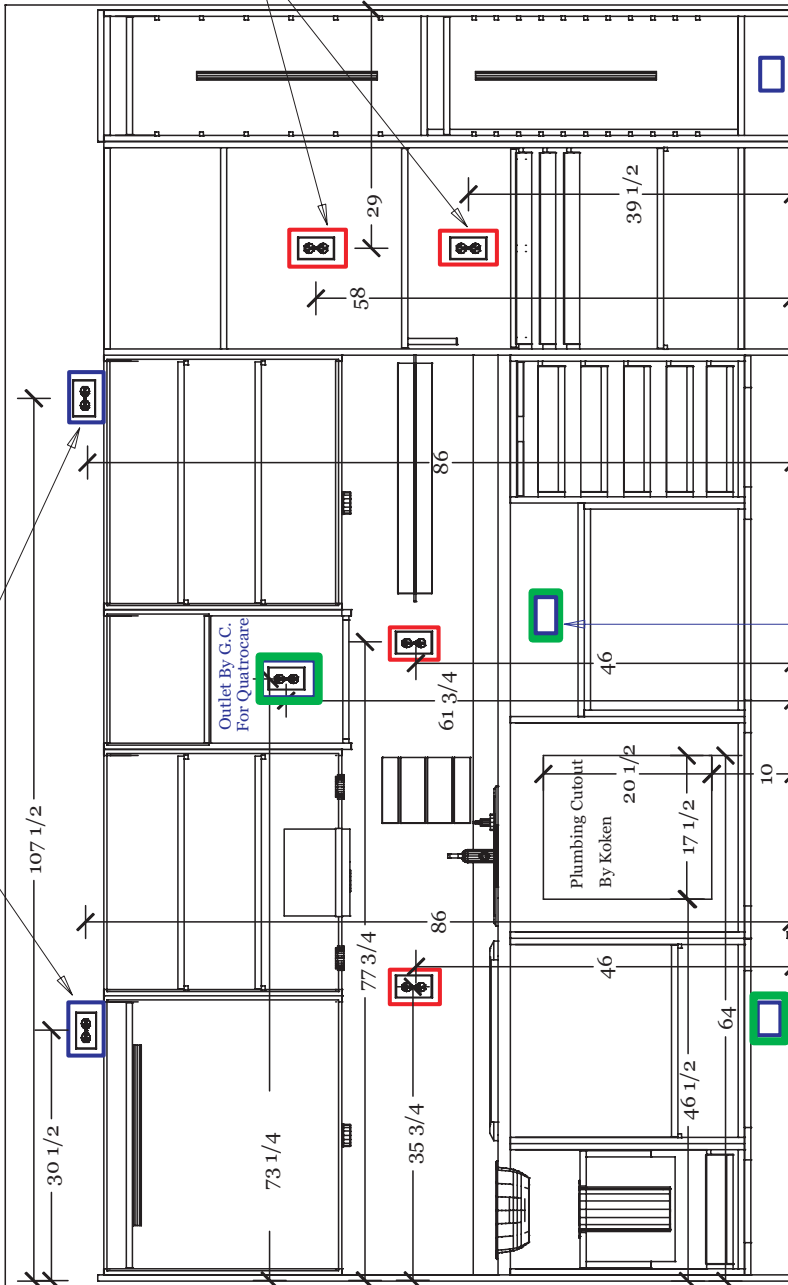
Detail Drawings

Model: E-155 (Page 2 of 2)

Elevation Cross-Section/Front View Drawing For General Contractor (G.C.) With Installation & Electrical Notes

NOTE: Outlets In RED Are Provided By Belmont

NOTE: Outlets In BLUE Are Supplied By General Contractor (G.C.)



Outlet By G.C. In Toe Kick
Cutout Toe Kick On Site As Needed

Optional Outlet By G.C.
For After Market Appliance

Outlet By G.C. In Toe Kick
Wired To Switch For Blue Light
Cutout Toe Kick On Site As Needed

NOTE: 2x6 Blocking Recommended @82" C/L AFF To Hang Upper Cabinets On Hang Rail

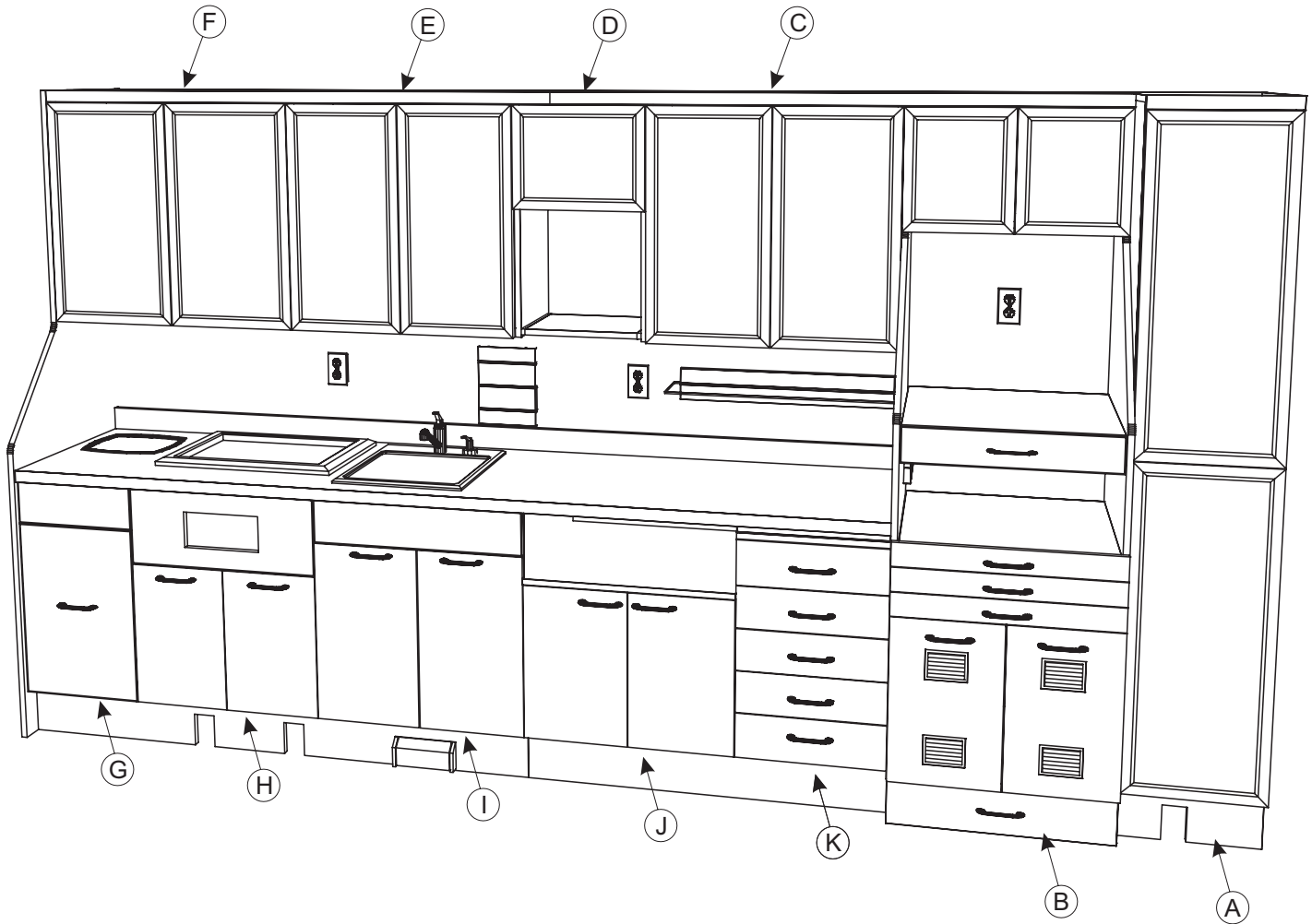
OPTIONAL
Stainless Steel Backsplash, With Cutouts, Recepticals and Outlet Box Supplied By Belmont.
Installing The Backsplash Recessed Outlet Box, Wiring Of Outlets By G.C.
NOTE: These Are Exact Locations To Center Line Of Cutouts

NOTE: Outlets Highlighted In GREEN Are For After Market Items Not Provided By Belmont.

Standard E-155 shown
Options and Configurations vary, see specific drawings to assist with setting up your custom configuration.

Assembly Instructions
Model: E-155

CABINET IDENTIFICATION



A = Clean Tub/Tray Storage Tower
B = Autoclave Tower
C = Upper Storage
D = Upper Storage with Slide-Out
E = Dispensary Upper Storage
F = Soiled Tub/Tray Upper Storage

G = Waste Base Cabinet
H = Ultrasonic Base Cabinet
I = Sink Base Cabinet
J = Base Cabinet with Opening
K = Drawer Base Cabinet

Standard E-155 shown

Options and Configurations vary,
see specific drawings to assist with
setting up your custom configuration.

Assembly Instructions
Model: E-155

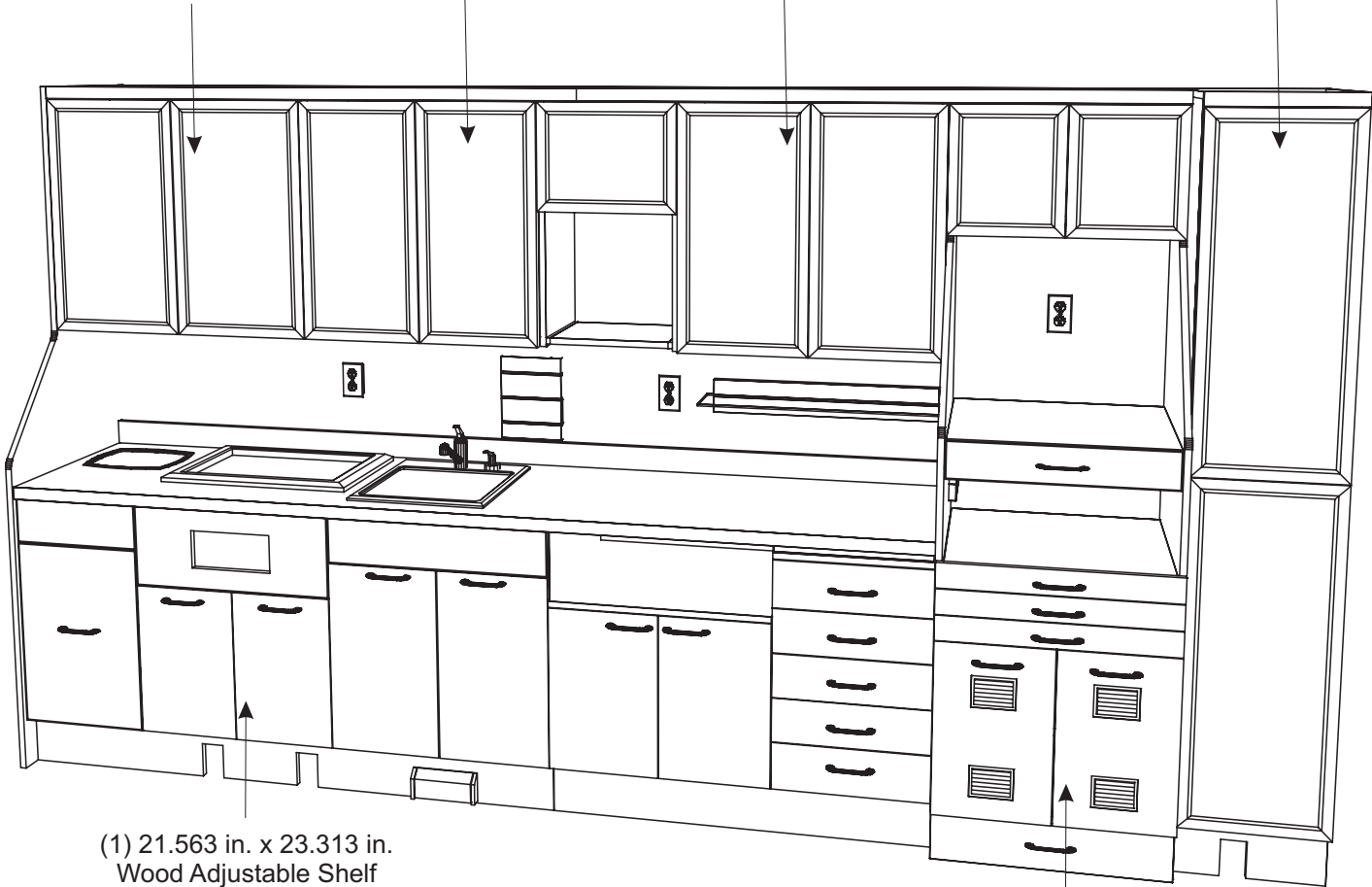
STANDARD E-155 SHELF LOCATIONS

(8) 12.0 in. x 32.313 in.
Glass Adjustable Shelfves

(2) 12.0 in. x 28.375 in.
Glass Adjustable Shelves

(2) 12.0 in. x 29.375 in.
Glass Adjustable Shelves

(17) 14.25 in. x 21.375 in.
Glass Adjustable Shelfves



(1) 21.563 in. x 23.313 in.
Wood Adjustable Shelf

(1) 23.813 in. x 24.375 in.
Wood Adjustable Shelf

Assembly Instructions

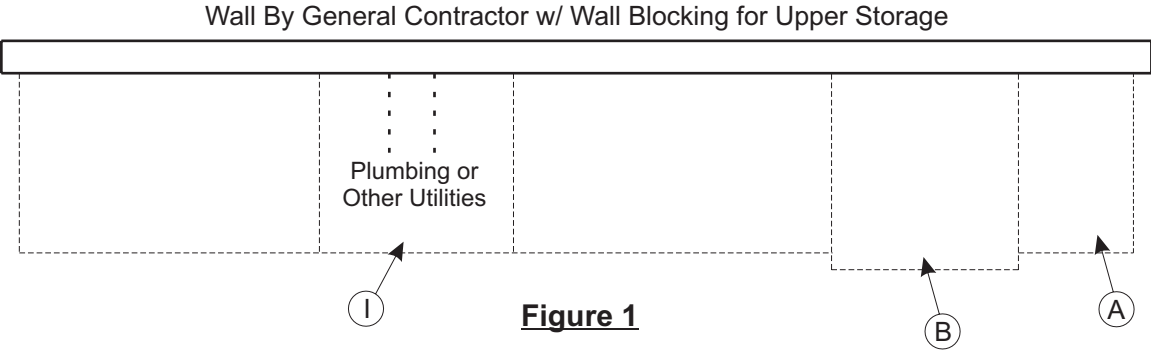
Model: E-155

NOTE:

These assembly instructions are based on a standard E-155 Sterilization Center. Each site installation may contain a different combination of cabinetry and options, but in general most installation guidelines remain the same. If you have custom configuration, please refer to the site specific drawings to assist with your installation.

Step 1

Using some chalk, outline the area to verify fit and cabinetry locations. Confirm that the appropriate plumbing supply/drain, wall blocking, electrical, and other utilities. are in the correct locations (see Figure 1). Reference the standard drawings at the beginning of this manual or specific site drawings for suggested locations.

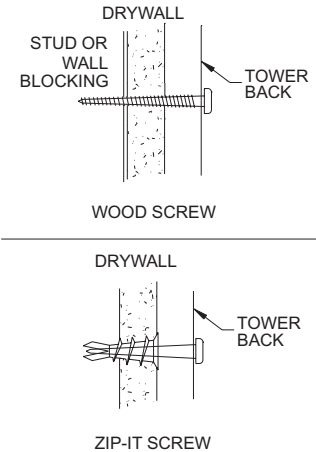
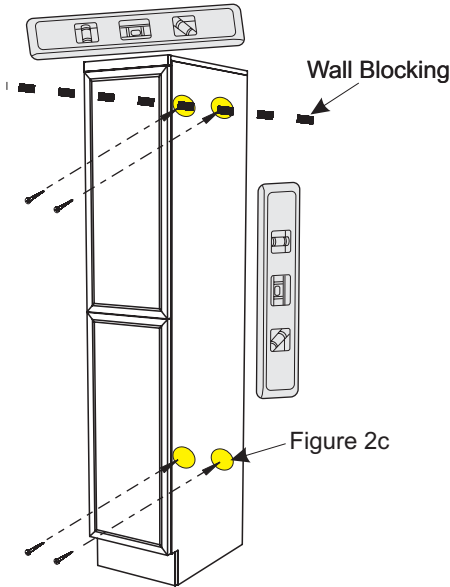
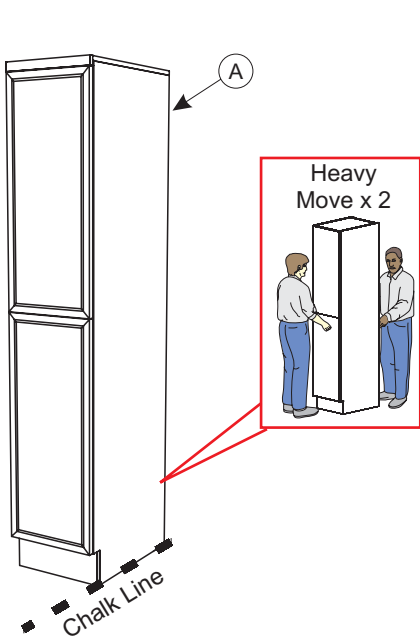


Step 2

Move Clean Tub/Tray Storage Tower (A) into position flush against the wall and in line with Chalk mark on floor (see Figure 2a). Plug the interior lamps into a floor outlet **controlled by customer supplied light switch** through the access hole in bottom of cabinet. *The front toe is removable for future access if necessary.*

*** Note: If the Tower contains the 92-810 Pneumatic System, see addendum A in this manual.**

Use shims to make sure the cabinet is flush and level (see Figure 2b). The Tower Cabinet (A) should be secured to the wall as shown in Figure 2b using 1-3/4" long wood screws in the upper portion of the Tower into wall blocking and the lower portion of the tower into wall studs or compatible anchoring fastener (see Figures 2b and 2c).



Assembly Instructions

Model: E-155

Step 3

Move Autoclave Tower (B) into position and make electrical connections at the outlets in the back panel. Move the Autoclave Tower flush against the wall and against the Clean Tub/Tray Storage Tower (A) (see Figure 3a).

Make sure the cabinet is flush and level (shim if necessary). The Autoclave Tower should be secured to the Clean Storage Tower using maximum 1-1/8" Long Wood Screws or Cabinet Connectors (K1 and K2) (see Figure 3b).

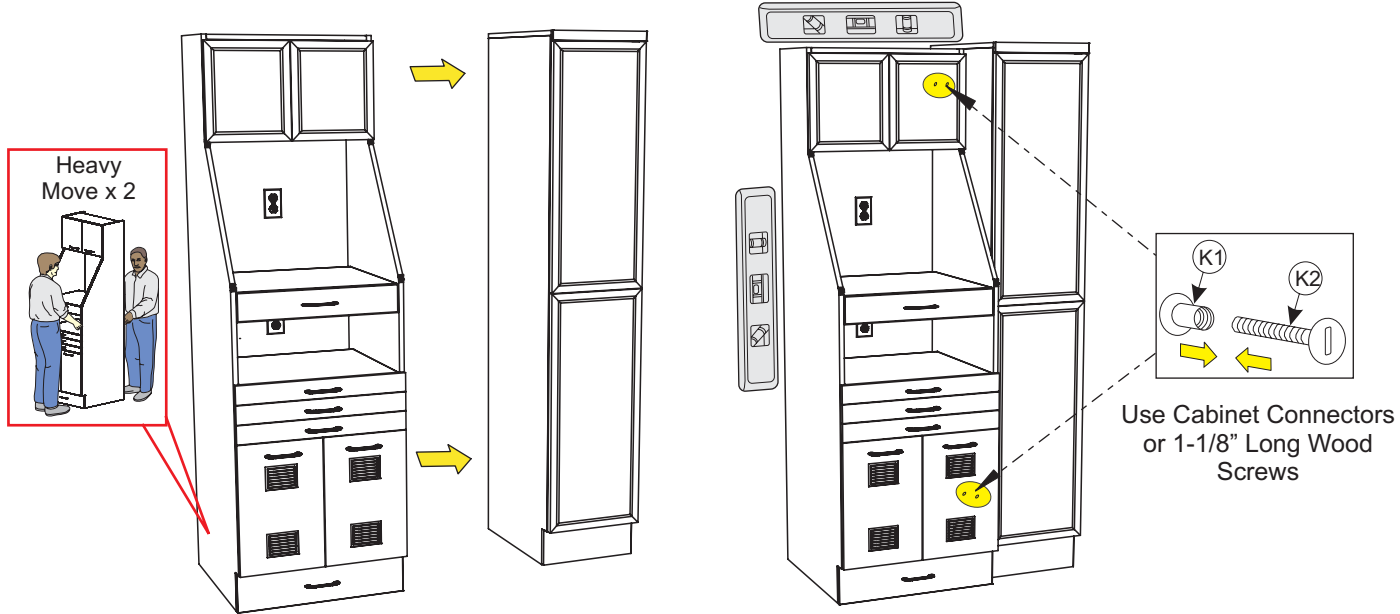


Figure 3a

Figure 3b

Step 4

Measure up 82-1/4" from the floor and mark a level line. The centerline represents the Hang Rail (J1) hole mounting centerline (see Figure 4a). Position the Hang Rail (J1) 5/8" from the side of Autoclave Tower (B). Secure J1 to wall using the appropriate wall fasteners for the type of wall construction (J2) (see Figure 4b for common types). It is important to hit as many wall studs as possible if no Wall Blocking is present.

*** Note: If your configuration contains the 92-810 Pneumatic System, there will be a short Hang Rail installed 17.25" from the right of the long Hang Rail.**

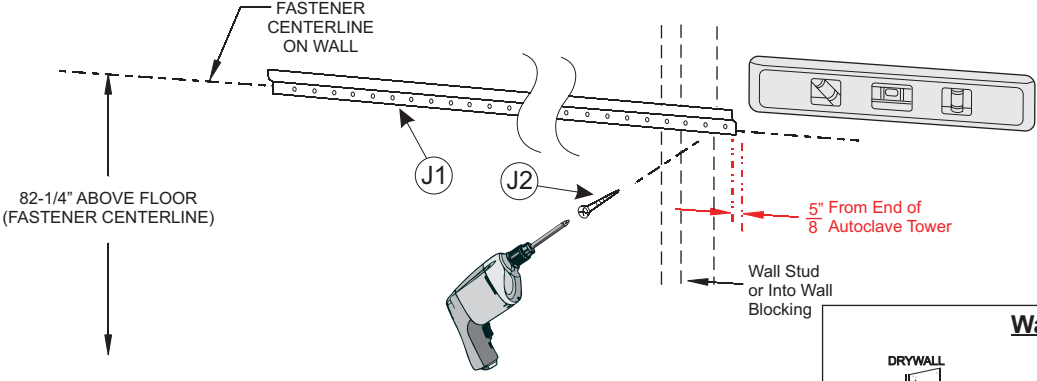


Figure 4a

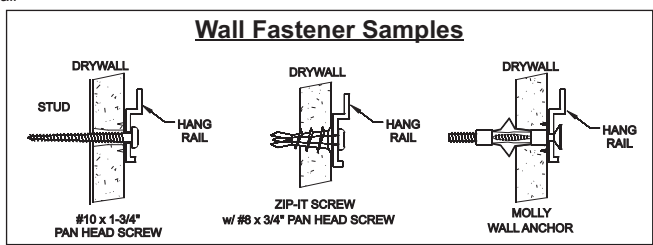


Figure 4b

Assembly Instructions

Model: E-155

Step 5

At the upper corners of each wall cabinet, remove the break away web to enable a multiple wall cabinet installation. DO NOT remove the web for finished ends (see Figure 5a).

Team Lift and Hang the Upper Storage Wall Cabinet 9 (C) onto the Hang Rail (J1) (see Figure 5a) by placing cabinet against the wall above the Hang Rail (J1) then slide down the wall until the hanger bracket snags the Hang Rail (J1). To tighten the cabinet to the Hang Rail use a screwdriver to tighten (see Figure 5b). Tighten the screw on both Hanger Brackets per wall cabinet.

Secure the Upper Storage Cabinet (C) to Autoclave Tower with Cabinet Connectors (K1 and K2) (see Figure 5a).

* **Note: If the Upper Cabinet(s) Contains LED Task/Cabinet Lighting, please see addendum B in this manual.**

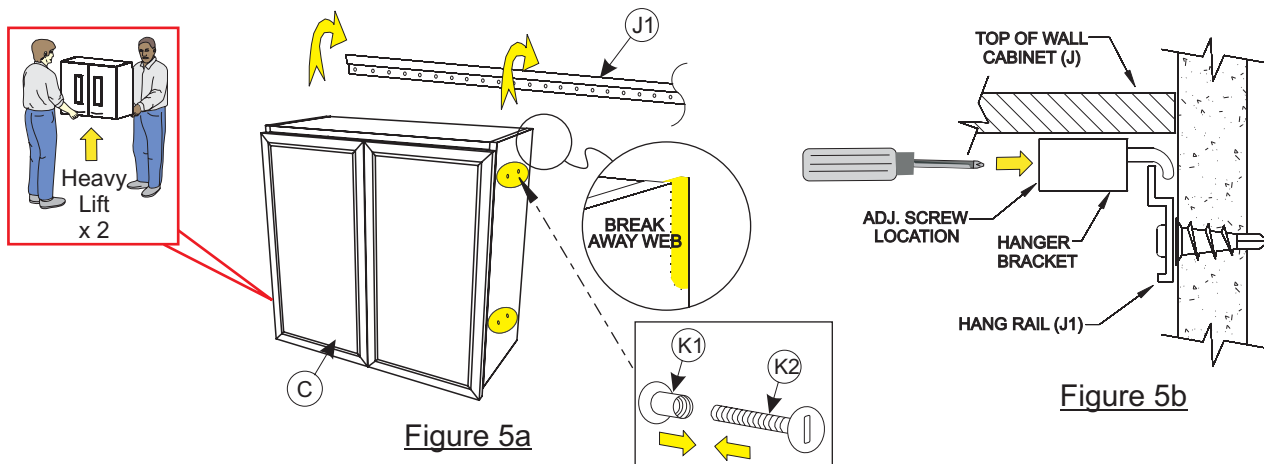


Figure 5a

Figure 5b

Use Cabinet Connectors
to secure to Autoclave Tower

Step 6

Team Lift and hang remaining Wall Cabinets (D, E, and F) (see Figure 6a). Secure Wall Cabinets together by inserting (4) Connectors (K1 and K2) through the (4) holes in each Wall Cabinet end (see Figure 6a).

Plug the interior lamp in Soiled Tub/Tray Cabinet (F) into a customer supplied wall outlet **controlled by customer supplied light switch**.

Upper Cabinets can be adjusted to line up correctly. Cabinet hangers have a 5/8" vertical adjustment and 9/16" depth adjustment (see Figure 6b). Adjust accordingly to achieve flush and level upper storage cabinets.

* **Note: If the Upper Cabinet (F) Contains the 92-810 Pneumatic System, please see addendum A in this manual.**

* **Note: If the Upper Cabinet Contains LED Task/Cabinet Lighting, please see addendum B in this manual.**

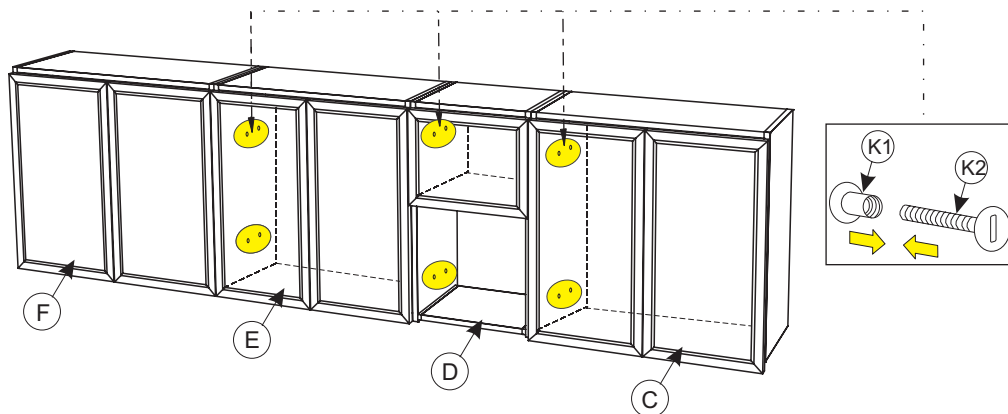


Figure 6a

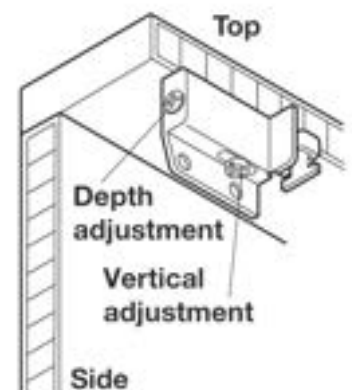


Figure 6b

Assembly Instructions

Model: E-155

Step 7

If your configuration contains Framed Glass Doors:

Place Upper Valance(s) (H3) on the Upper Cabinets and Autoclave Tower. The front of (H3) should be flush with Framed Glass Doors. Drill 1/4" Pilot Holes Through (H3) and a 1/2" deep into the Upper Cabinets and Autoclave Tower . Drill as many pilot holes necessary for the Sterilization Center configuration purchased.

Use 1-1/8" Long Wood Screws (H1) secure (H3) to the Upper Cabinet and Autoclave Tower (see Figure 7)

* **Note:** If the Upper Cabinet Contains LED Task/Cabinet Lighting, please see addendum A in this manual.

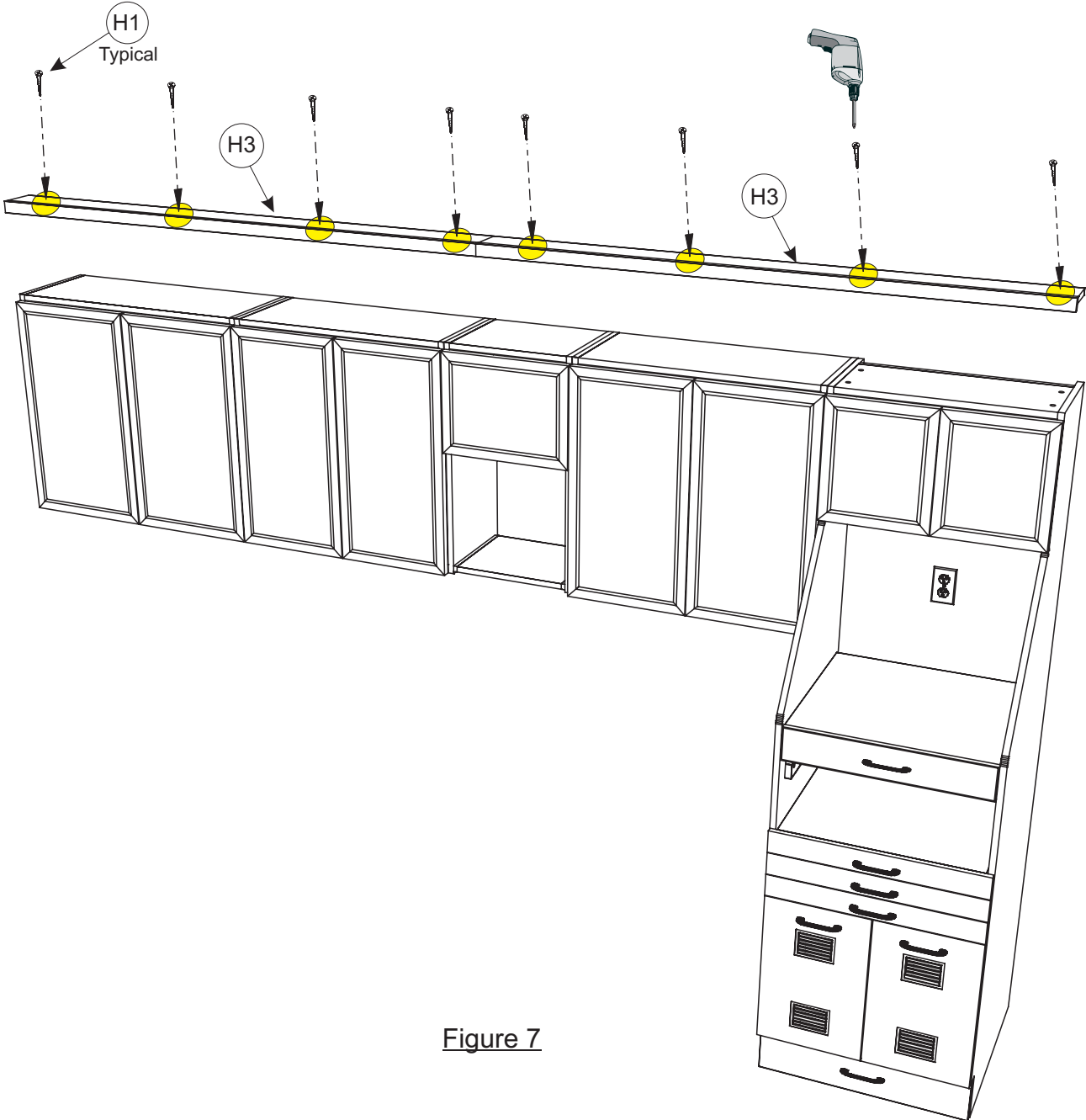


Figure 7

Assembly Instructions

Model: E-155

Step 8

Mount the Leg Leveler (D3) to the Toe Base(s) by inserting (D3) into (D4) (see Figure 8a). Adjust (D4) if necessary for Side Toe configurations. (see Figure 8b).

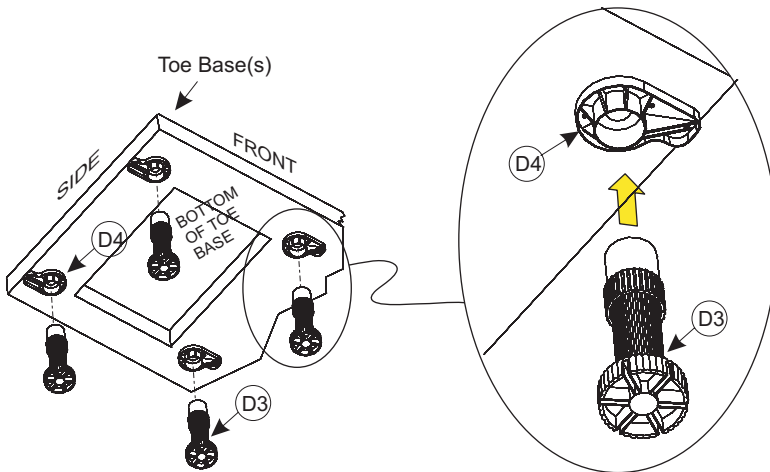


Figure 8a

IMPORTANT

When a finished side toe-kick is used, the Leg Leveler Bases (D4) on that side must be removed and rotated 90° to allow clearance for the toe-kick (see Figure 6B) once installed.

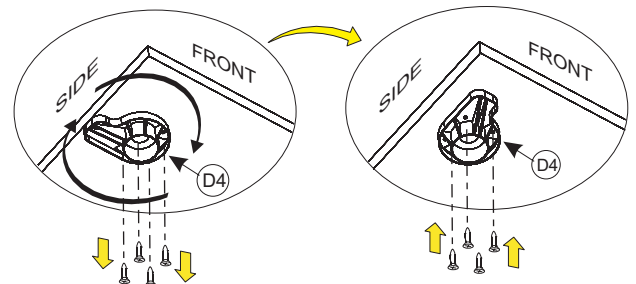


Figure 8b

Step 9

Turn the Toe Base(s) with (D3/D4) facing up. Adjust each (D3) to 5-5/16" from bottom of foot to bottom of Toe Base. Use a tape measure to verify height is set correctly. **Do not** adjust any (D3) below 5-5/16", as the Toe Kick will not install correctly (see Figure 9).

Set Toe Base(s) into place with Edgebanding (Finished Edge) facing forward. To verify correct Toe Base placement, the (D3) Legs should line up where each Cabinet Module meets. For a Standard E-155 Base Layout see Figure 9a.

Once correct Toe Base(s) placement is verified, level the Toe Base(s) making sure not to drop below the 5-5/16" height (see Figure 9).

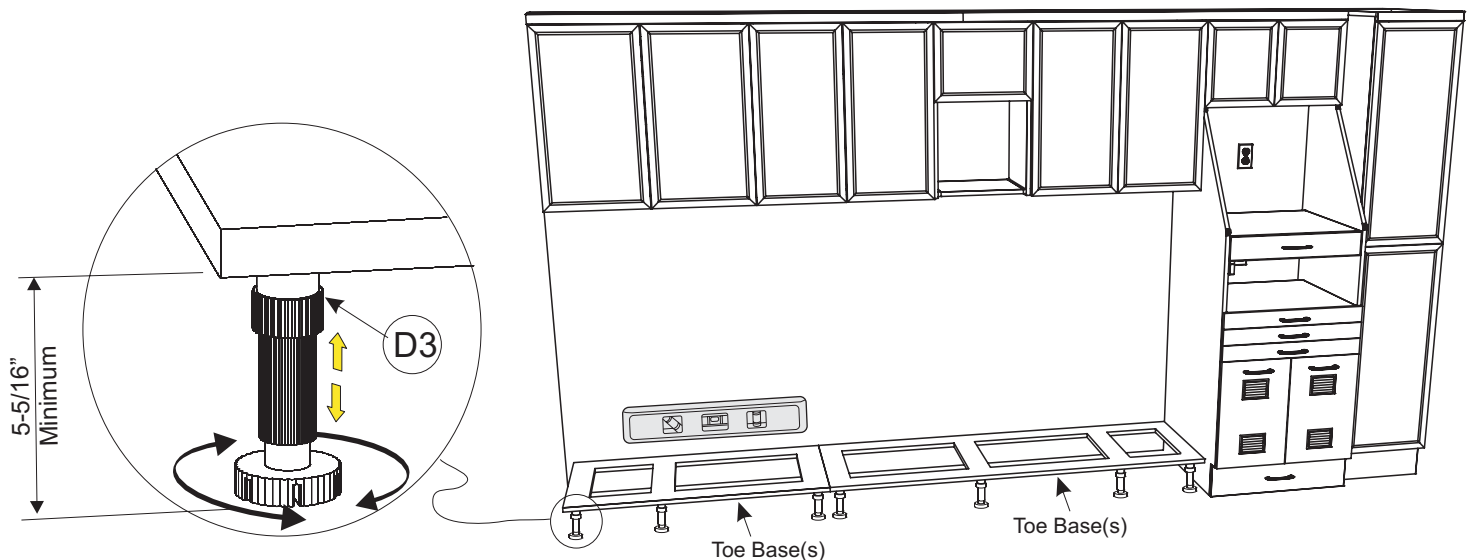
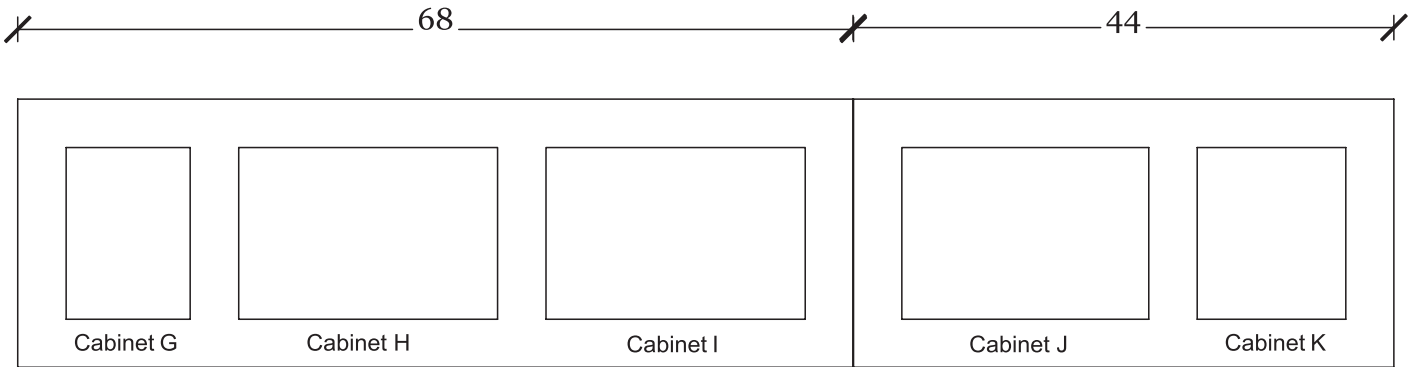


Figure 9

Assembly Instructions
Model: E-155

Toe Base Layout for Standard E-155



VIEW FROM TOP

Assembly Instructions

Model: E-155

Step 10

Place the cabinets (G, H, I, J, and K) into the proper location (using fillers if needed) (see Figure 10). Using supplied #6 x 1-1/8" wood screws, mount each lower cabinet to the Toe Base(s) with (4) wood screws.

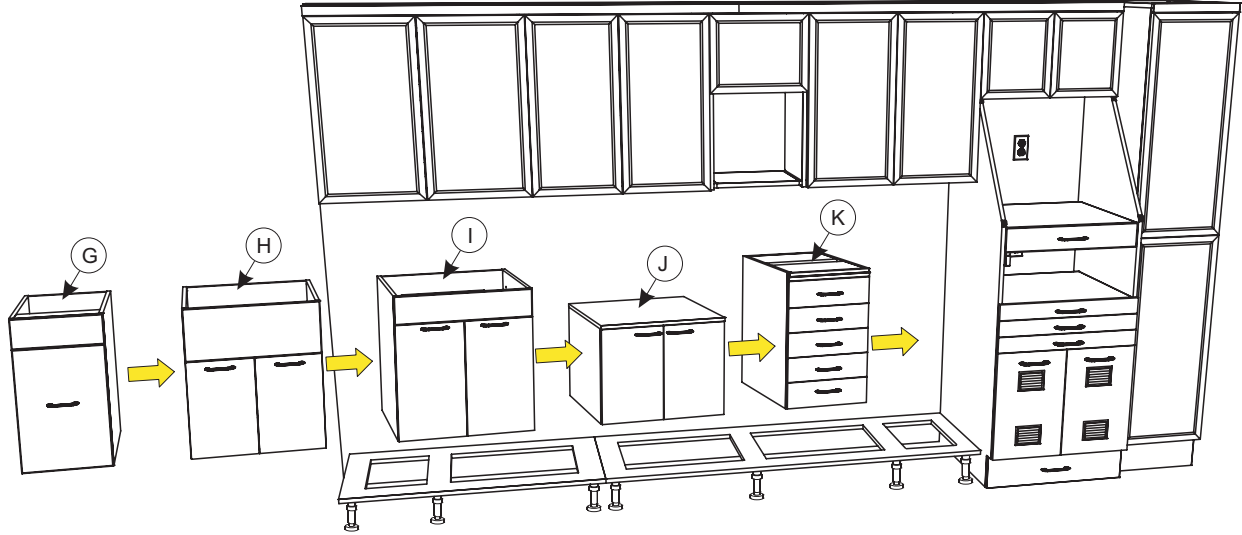
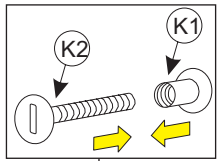


Figure 10

Step 11

Secure Cabinets (G, H, I, J, and K) together by opening doors/removing drawers and inserting (4) Connectors (K1 & K2) through the (4) holes through each Base Cabinet End. Tighten Connectors with screw drivers (see Figure 11).

Note:
If holes are not drilled through fully:
Drill (4) 5/16" holes through the side panels
in approximate locations as shown below
(pilot holes will locate positions).
Be careful not to drill into drawer slides or
other hardware of cabinet you are connecting to.



Typical

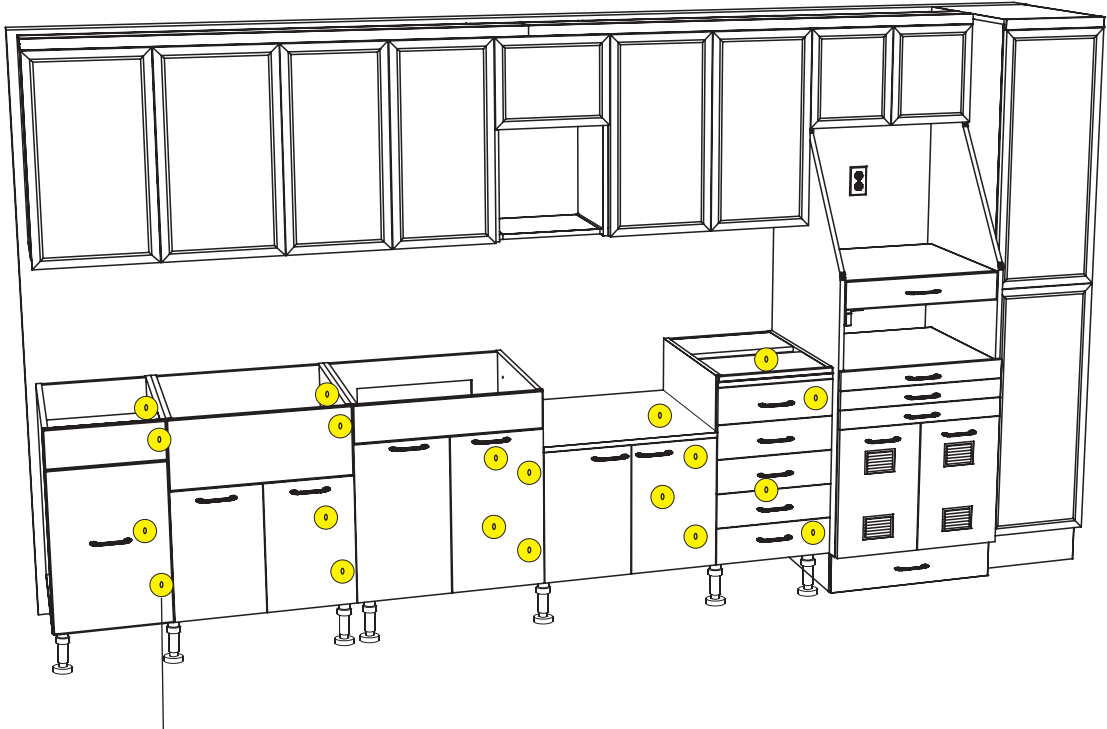


Figure 11

Assembly Instructions

Model: E-155

Step 12

For configurations with Optional Finished End Panel:

Line Up Finished End Panel with Cabinets F and G. Finished End Panel should be flush with wall and Cabinets F and G (see Figure 12a). Secure Finished End Panel using #6 x 1-1/8" wood screws (see Figure 12b).

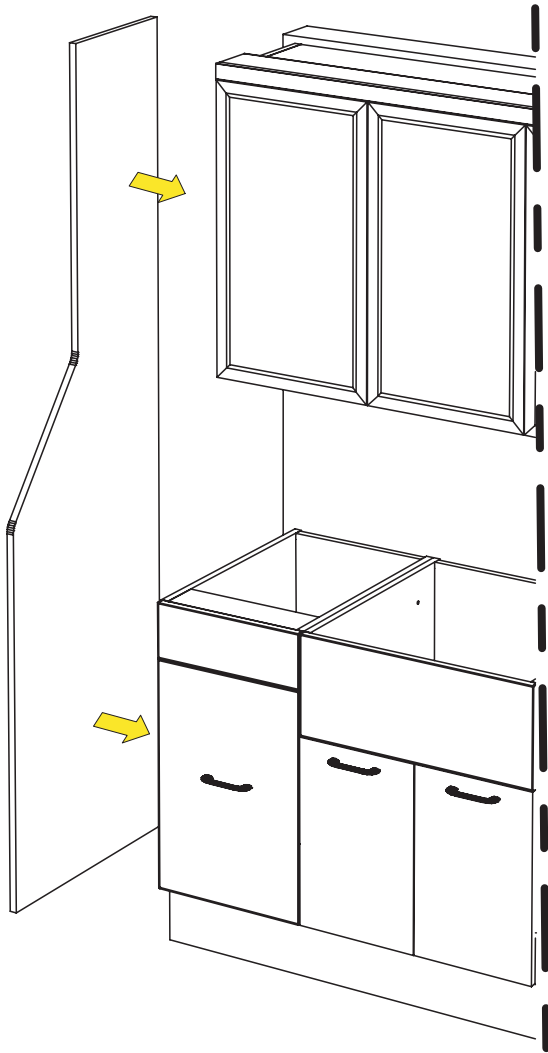


Figure 12a

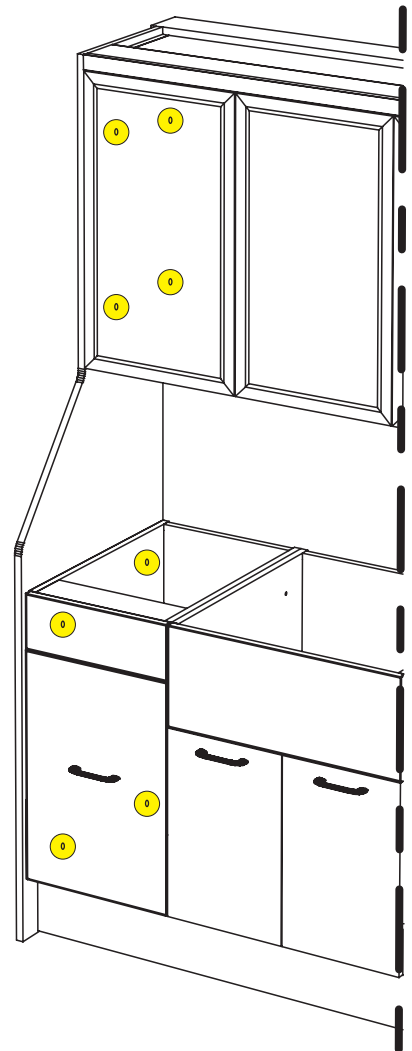


Figure 12b

Assembly Instructions

Model: E-155

Step 13

For configurations with Optional Stainless Steel Splash and Optional Mid-Section Outlets:

If your Stainless Steel Splash contains outlet cut-out(s), please test fit splash to verify outlet(s) are located correctly. Adjust outlet locations accordingly to fit the cut-out(s) in the Stainless Steel. The boxes and outlets should be recessed into the wall and wired by qualified electrician before Splash installation.

Note: Standard E-155 outlet locations are in front of this manual. If this is a custom configuration, see the site specific drawings for appropriate locations.

Peel paper from Double-Sided Tape on back of Stainless Steel Splash and Trim Strip(s) (if included). Lay a generous amount of Silicone to the Back of the Stainless and Trim Strip(s), press the Stainless into place. The Tape should hold the Splash into place while the Silicone cures. Install Trim Strip(s) (if included or needed) (See Figure 13).

Note: The Trim Strips are sometimes included to cover seams and finish ends when wall are out of square.

After Silicone cures install Outlet Covers.

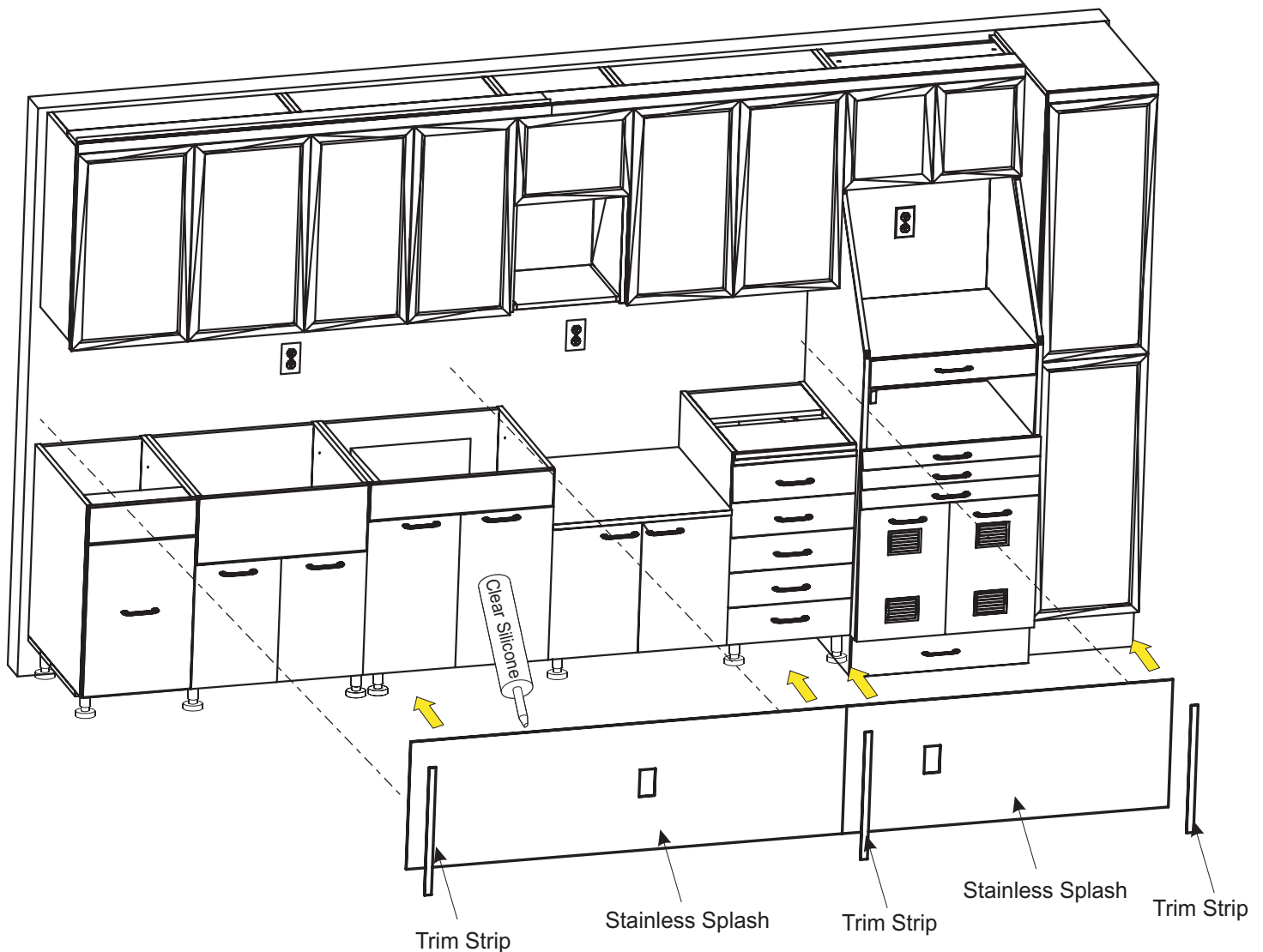


Figure 13

Assembly Instructions

Model: E-155

Step 14 (Laminated Work Surface(s))

For Cambria/Solid Surface see Step 14a and 14b

Place Laminated Work Surface onto cabinets with the back edge flush with the wall and the right edge flush with the Autoclave Tower (B) or against wall depending on configuration (see Figure 14). You can secure Work Surface by placing silicone or construction adhesive on stretchers or using #8 x 1-1/2" flat head screws through each Cleat and each Stretcher into the underside of the Work Surface (see Figure 14a).

Secure Top Using Silicone or Construction Adhesive

OR

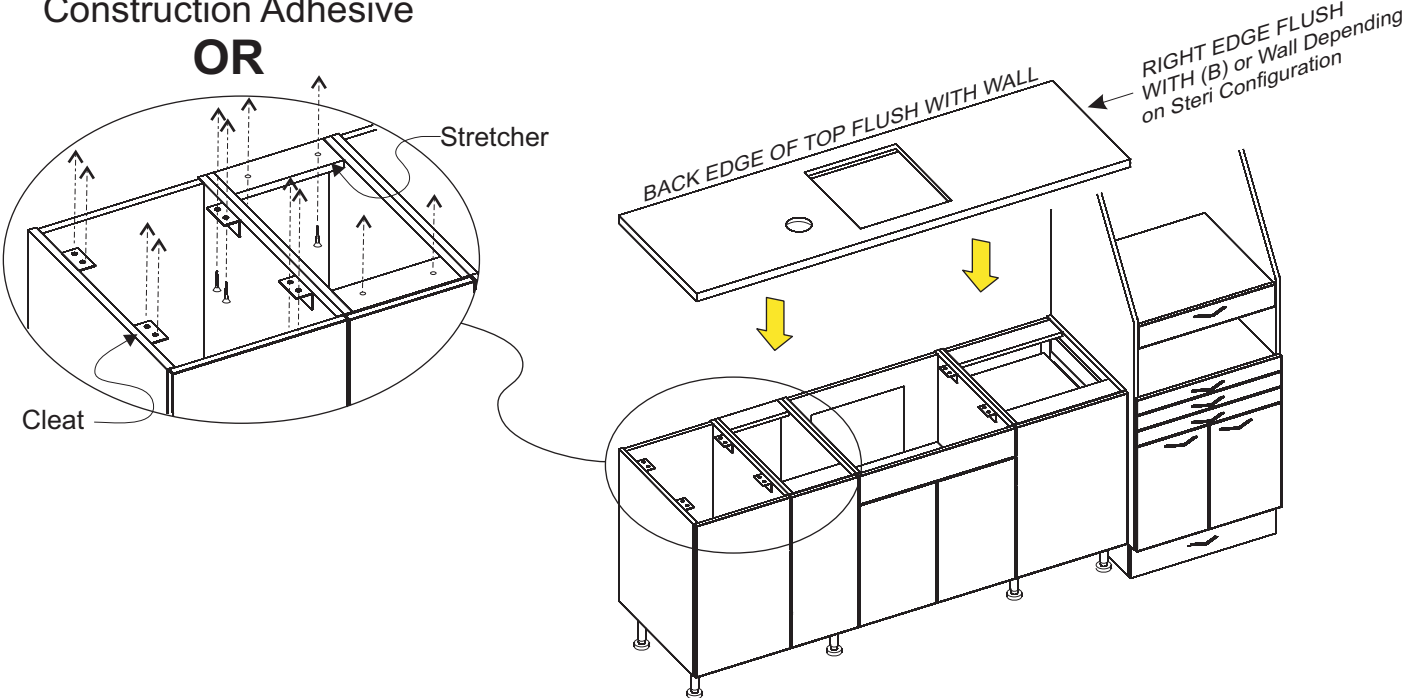


Figure 14

Generic Layout Shown, Configurations and Cut-Out(s) vary Depending on Options

Assembly Instructions

Model: E-155

Step 14a (Solid Surface Top(s))

Skip this step if your Solid Surface Top has a Drop-In Sink or Has the Undermount Sink Pre-Installed

Due to shipping limitations the Undermount Sink on Solid Surface may need to be installed in the field. Place the Solid Surface Top upside down on the Base Cabinets, Locate the Sink Cut-Out, and set the Undermount Sink over the appropriate cut-out.

Looking through the drain hole center the Undermount Sink over the Cut-Out, and use a Pencil to mark the location (see Figure 14a-1). Set the sink off to the side and lay a solid bead of Clear Silicone around the inside the Pencil Line on the Solid Surface (see Figure 14a-1). Set the Undermount Sink back on to the Solid Surface and press it down firmly on the Clear Silicone. Use the provided Pocket Slotted Stretchers to secure the Undermount Sink with provided Wood Screws (See Figures 14a-2 and 14a-3).

!! Allow the Silicone to Set for 24 Hours before continuing Installation !!

After 24 hours, turn the Solid Surface Work Surface over and use a utility knife to cut away any excess Silicone that can be seen on the inside edges of the Undermount Sink.

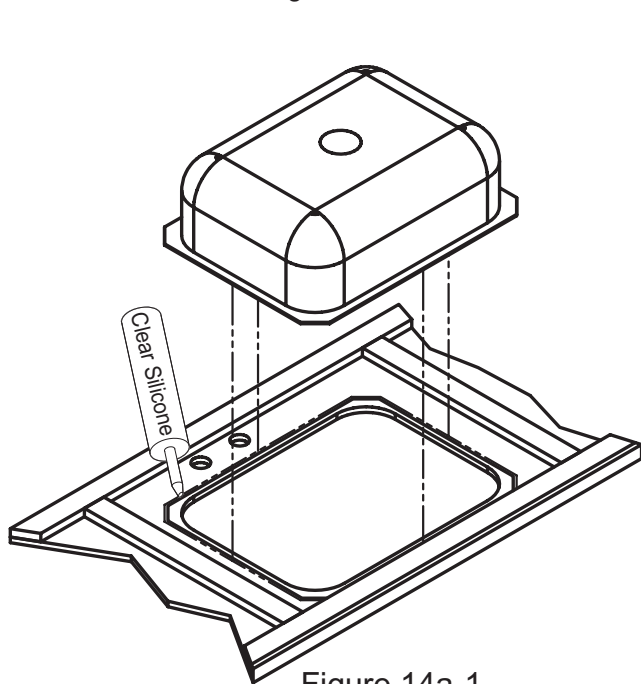


Figure 14a-1

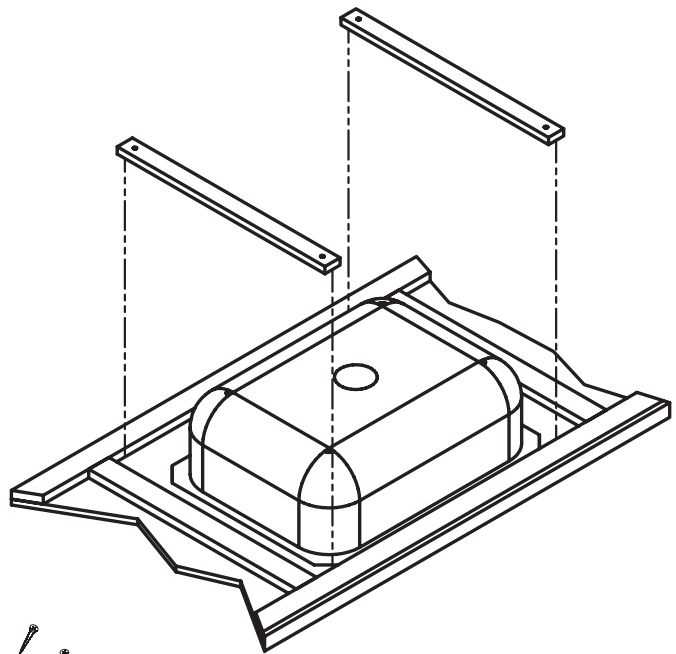


Figure 14a-2

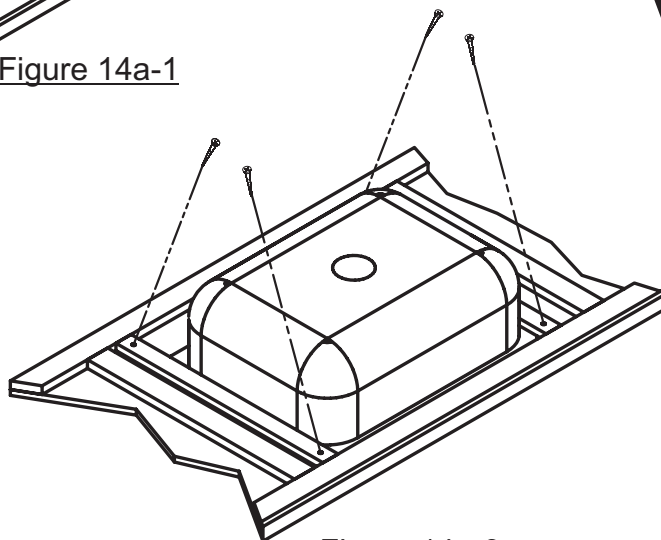


Figure 14a-3

Assembly Instructions

Model: E-155

Step 14b (Cambria/Solid Surface Top(s))

For Cambria/Solid Surface ONLY

Place Cambria/Solid Surface Top(s) onto cabinets with the back edge flush with the wall and the right edge flush with the Autoclave Tower (B) or against wall depending on configuration. Secure Work Surface by placing silicone or construction adhesive on stretchers.

Step 15 (All Work Surface Materials)

Apply Construction Adhesive or Silicone to wall and set Backsplash into place on the Top and up against the wall (see Figure 15a). Apply Construction Adhesive or Silicone to Side Splashes and place them in their appropriate locations (if applicable). Seal Splash(es) with Clear Silicone at seam of Splash and on Top of Splash to Wall (see Figure 15b).

Note: Test fit
prior to glueing
into place

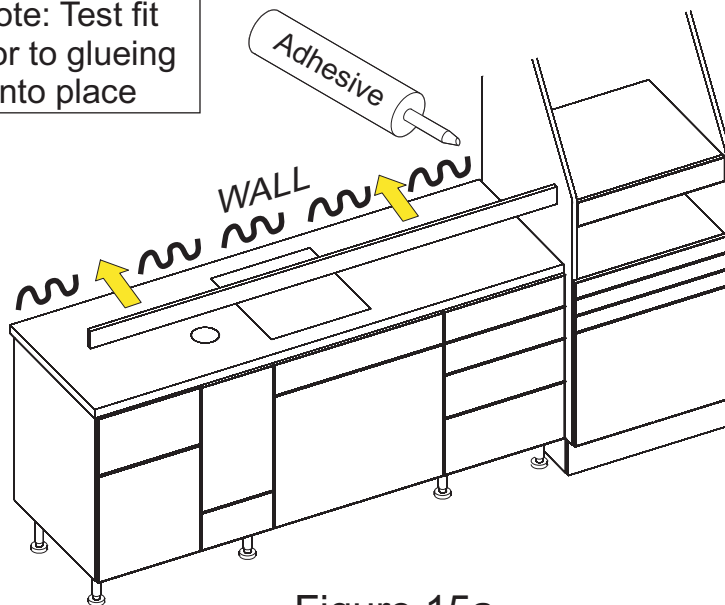


Figure 15a

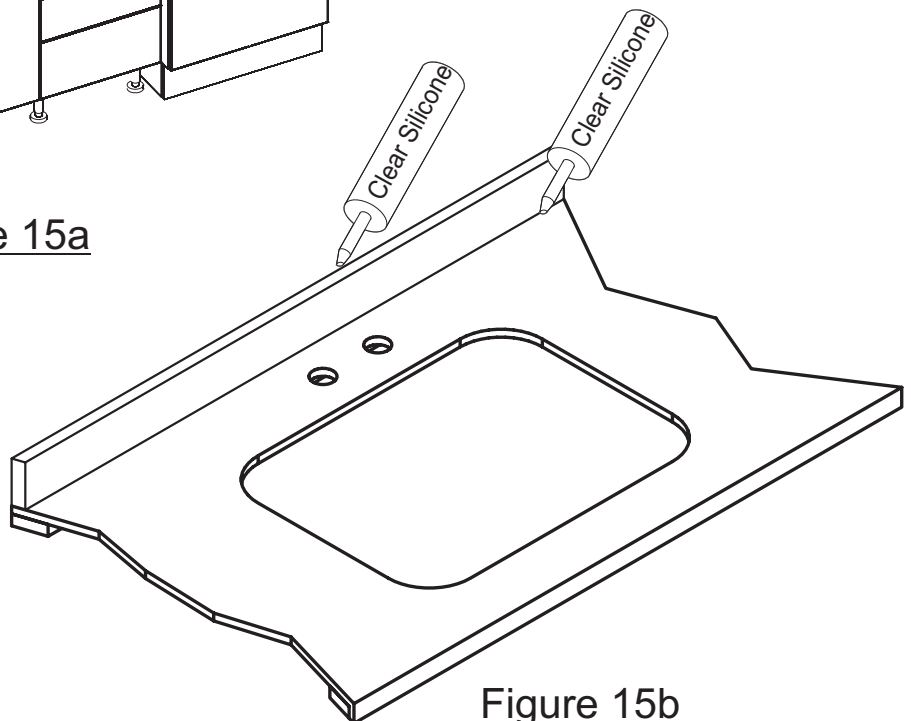


Figure 15b

Assembly Instructions

Model: E-155

Step 16

*** Note: If your configuration contains the Pneumatic System, please see addendum A in this manual.**
Install Toe Kick(s) by snapping clips onto legs. (see Figure 16).

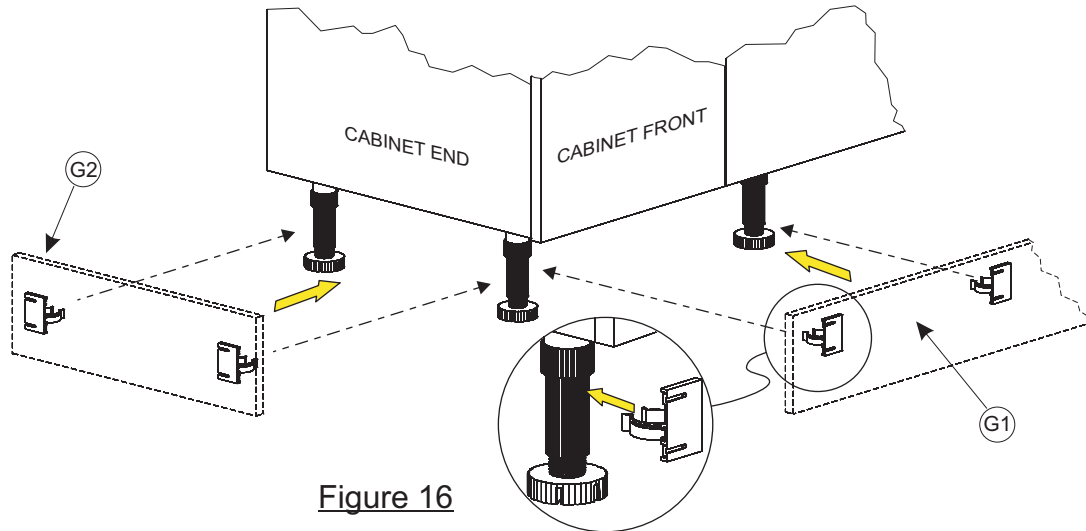


Figure 16

Step 17

Mount Drop-In Sink (C1) (if applicable) to counter top per instructions within sink packaging (see Figure 17). Mount Faucet (C2), Strainer assembly (C3) and Tail Piece assembly (C4). Connect Tapmaster per instructions within Tapmaster packaging (Models and Appearance Vary).

Make all supply/drain plumbing connections through the access at the rear of the cabinet. Make sure to verify plumbing work with local codes.

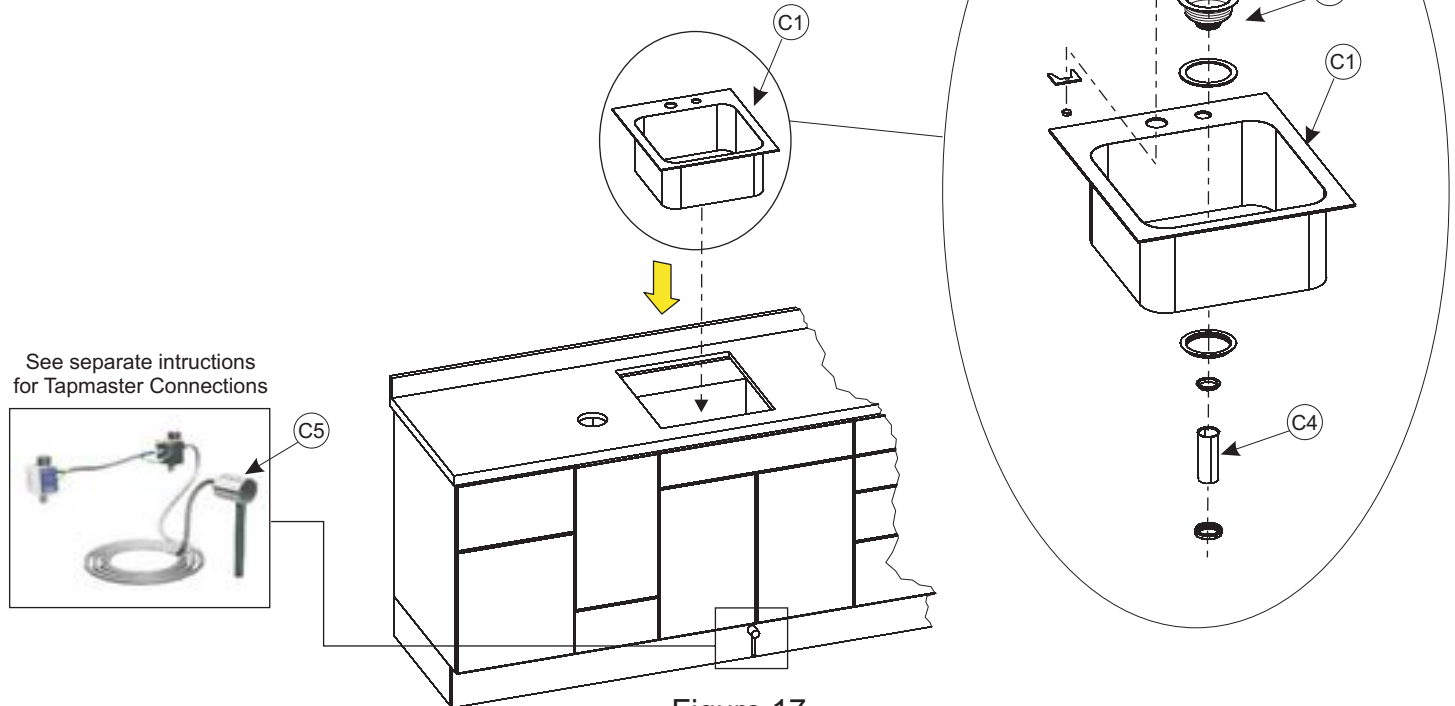


Figure 17

Step 18

Components Vary Depending on Options Selected

Component Installation:

- Waste Can
- Sharps Drop
- Soap Dispenser
- Hose Guide for HVE
- Adjustable Shelves for Lower and Uppers (See Your Drawing for Adjustable Shelf Locations and Quantity per Cabinet)
(see the Front of this Manual for Standard E-155 Shelf Locations)
 - Wood Shelves use (4) Metal Shelf Pins per Shelf
 - Glass Shelves use (4) Rubber Shelf Pins per Shelf
- Cup Dispenser
- Towel Dispenser

Step 19

Optional Mid-Section GS-1 and GS-3 Glass Shelf Installation:

Assemble GS-1 by placing Glass between the Shelf Panels and use Allen Wrenches to tighten the Panels to clamp the Glass into place (see Figure 19a).

Assemble GS-3 by placing (3) pieces of Glass between the Shelf Panels and use Allen Wrenches to tighten the Panels to clamp the Glass into place (see Figure 19a).

Glass Shelf Options require Drywall Anchors or other compatible Drywall Fastener (not included)

Locate GS-1 and GS-3 desired mounting locations and use a pencil to mark location(s) on the Wall/Stainless Steel Splash. **Be sure that mounting locations do not impede access to any optional components, such as Lift Lid on a Ultra Sonic OR any wall utilities such as electrical, data, plumbing, or air lines.**

Use a ruler to mark pilot holes for mounting on the Shelf Panels. Make sure pilot holes are symmetrical. Use a drill to create mounting holes in the Shelf Panels (see Figure 19b).

Use the Shelf Unit as a template by placing it in the appropriate location and drill holes through the Mounting Holes through the wall/Stainless Steel Splash. Now drill the appropriate size hole for compatible anchoring fastener (see Figure 19c).

Install the anchoring fastener in wall/Stainless Steel Splash and use the supplied screws to mount the Shelf Unit (see Figure 19d).

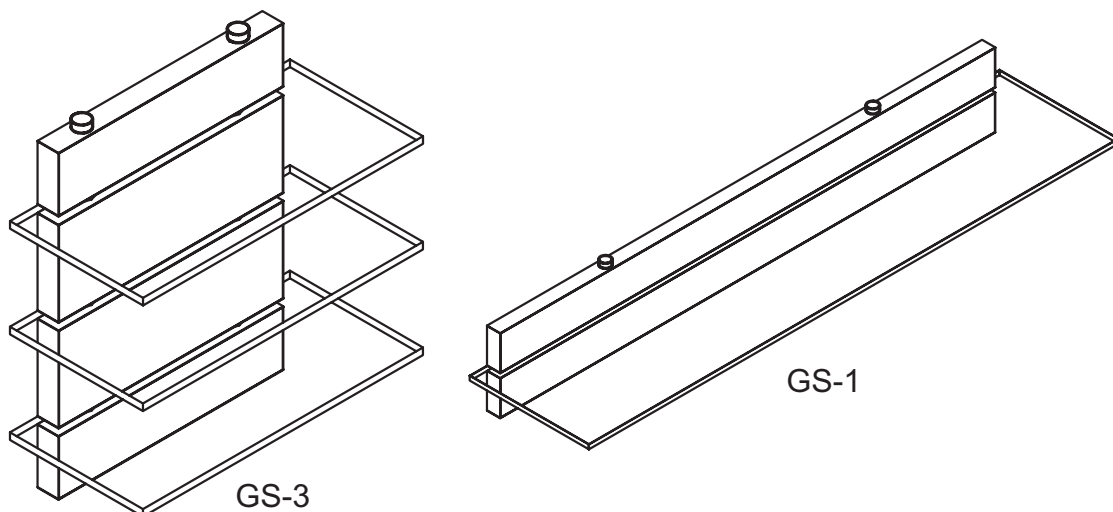
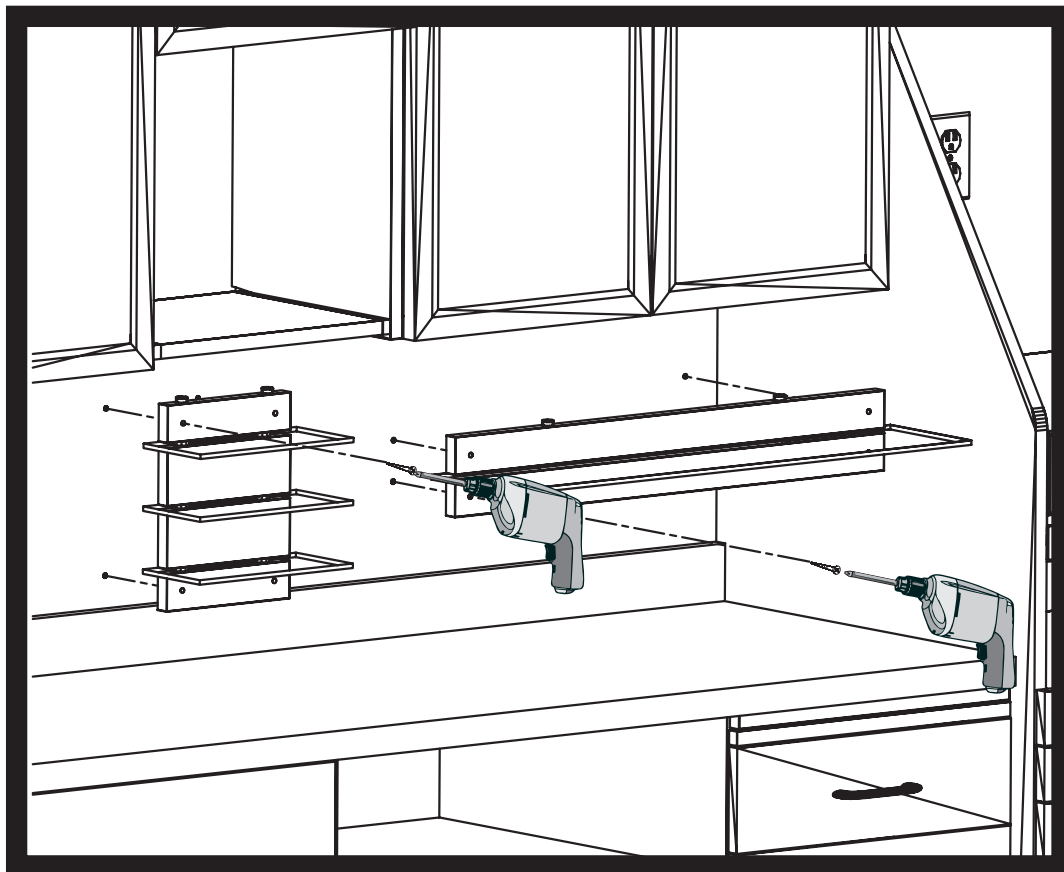
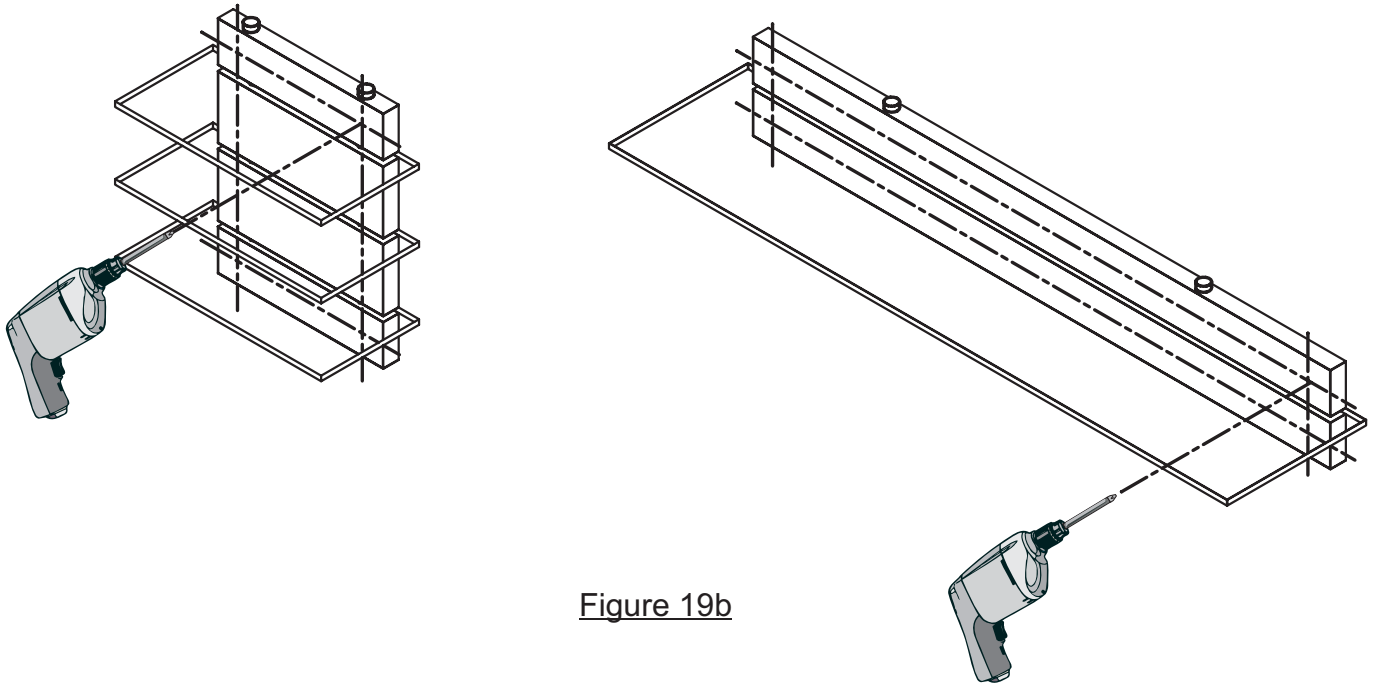


Figure 19a

Assembly Instructions
Model: E-155

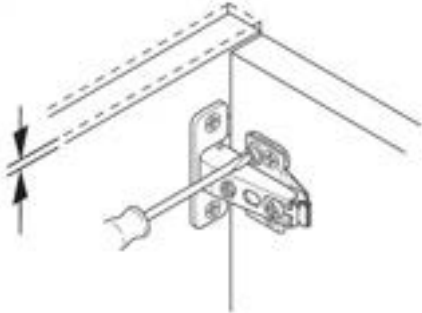


Hinge Adjustments

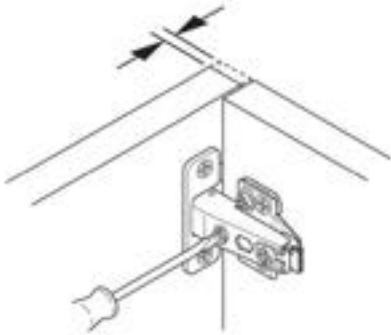
Model: E-155

Hinge Adjustment For Standard Doors

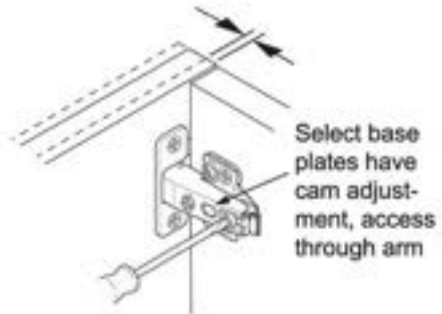
Height



Side

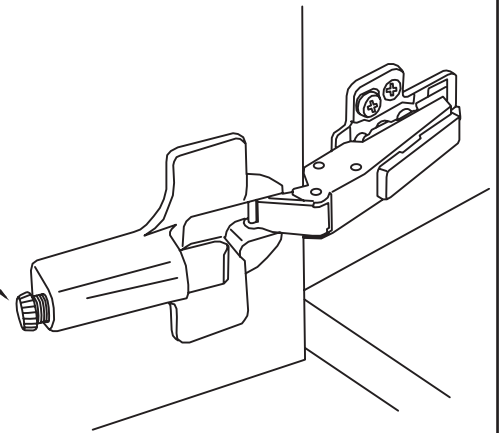


Depth



G-Force™ Controlled Closing Device

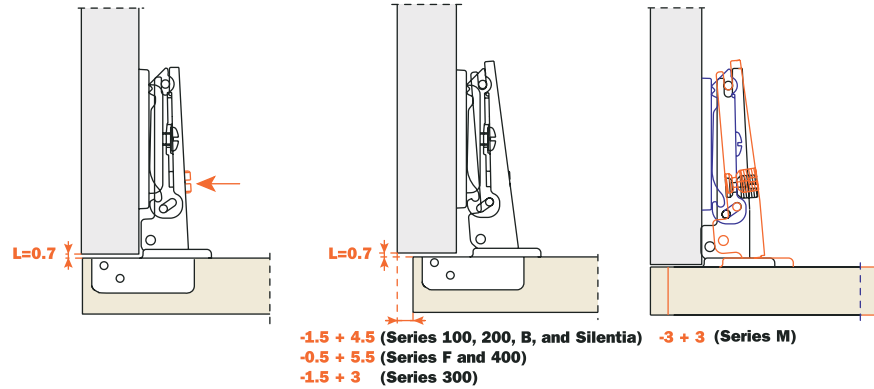
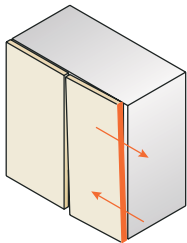
Knurled screw
adjusts closing
force



Part 1

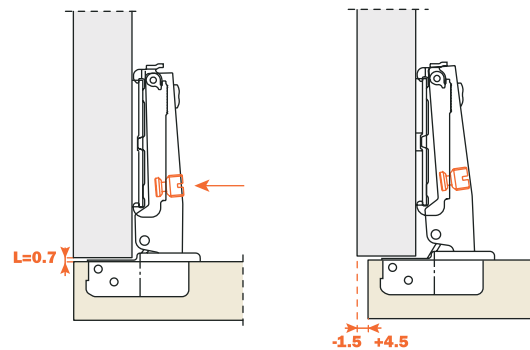
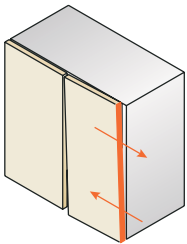
Sideways adjustment of the door with Series 100, 200, 300, F, 400, B, M and Silentia hinges

A specially developed technical solution allows the sideways adjustment of the door while maintaining the gap behind the door ("L" value of 0.7 mm). The adjustment screw operates in conjunction with the inner leaf of the hinge arm. The door moves in only one direction - parallel to the carcase and without a gap developing between the door and the carcase. No further adjustments are necessary.



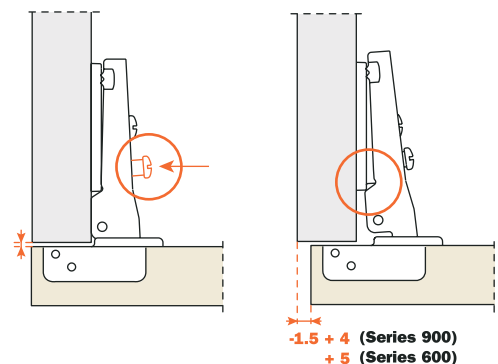
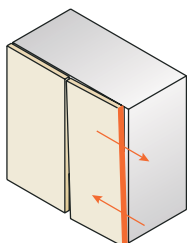
Sideways adjustment of the door with Series 800 hinges and Silentia Series 800 hinges

Sideways adjustment of the door is made by using the indicated screw. It is possible to recover the gap behind the door (the initial "L" value of 0.7 mm) simply by using the assembly stop located on the underside of the hinge.



Sideways adjustment of the door with Series 900 and 600 hinges and Silentia Series 900 hinges

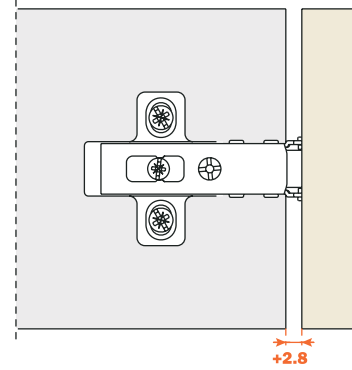
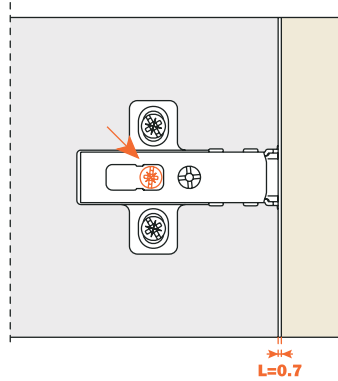
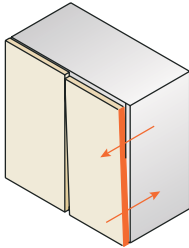
Required sideways adjustment of the door is made by slackening the hinge fixing screw. It is possible to recover the gap behind the door (the initial "L" value 0.7 mm) simply by using the assembly stop located on the underside of the hinge. Finally the fixing screw must be retightened.



Part 2

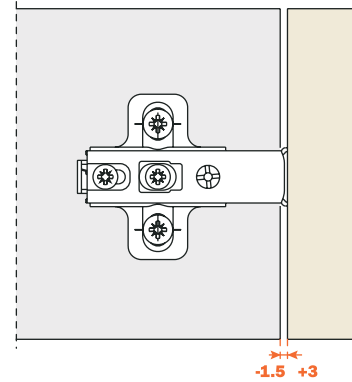
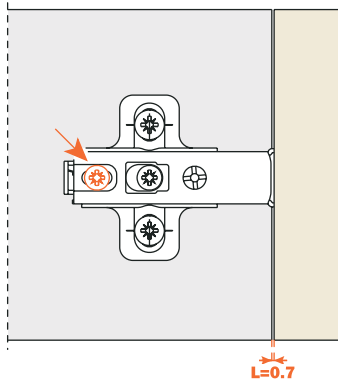
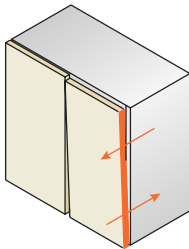
Traditional depth adjustment

The hinge fixing screw is slacked and an oval slot on the arm of the hinge enables the door to be adjusted frontally by +2.8 mm. Finally the fixing screw must be retightened.



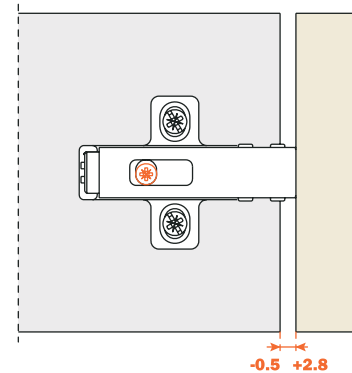
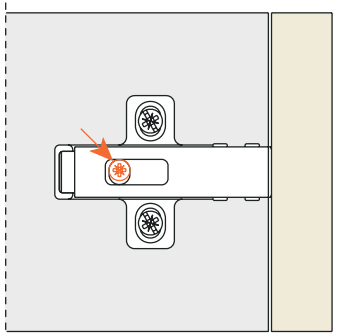
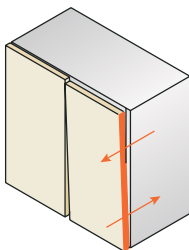
Traditional depth adjustment with Series 800 hinges

The hinge fixing screw is slacked and an oval slot on the arm of the hinge enables the door to be adjusted frontally from -1.5 mm to +3 mm. Finally the fixing screw must be retightened.



Depth adjustment with Domi snap-on mounting plates - Model BAV

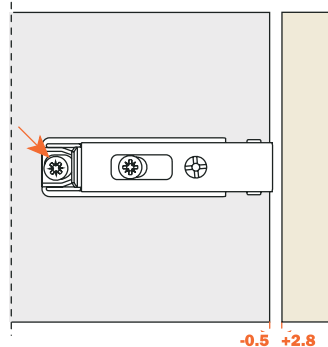
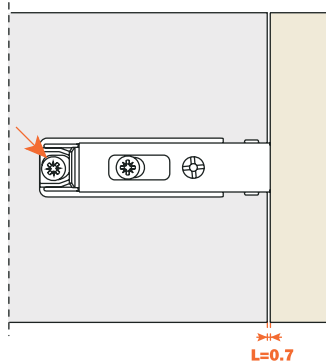
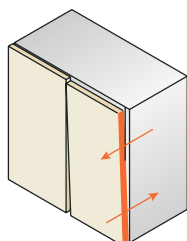
Depth adjustment is made without loosening any screws. The door can be moved frontally from -0.5 mm to +2.8 mm simply by rotating the cam adjuster in this range of mounting plates.



Part 3

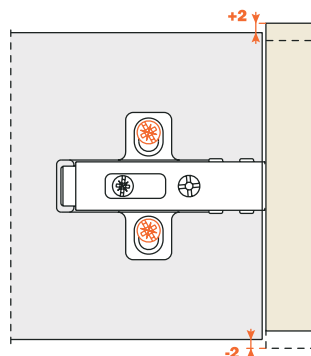
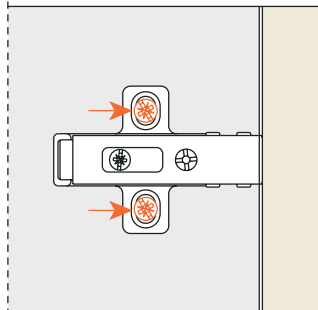
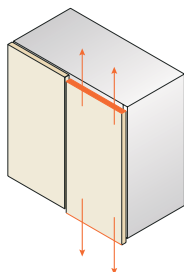
Depth adjustment with Domi snap-on mounting plates - Models BAPXR and BARXR

Depth adjustment is made without loosening any screws. The door can be moved frontally from -0.5 mm to +2.8 mm simply by rotating the cam adjuster in this range of mounting plates.



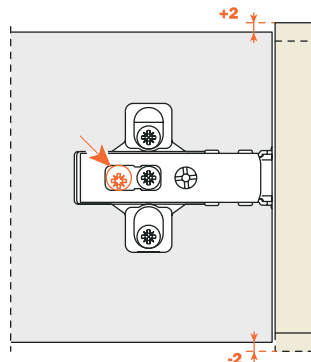
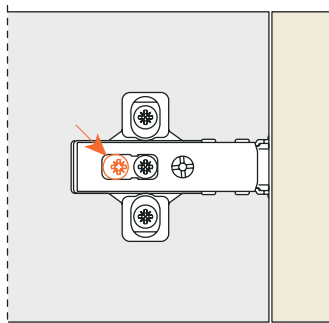
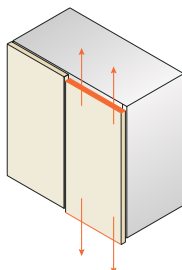
Height adjustment with Domi snap-on mounting plates - Model BAV - Series 200

By loosening the two fixing screws it is possible to adjust the door vertically by ± 2 mm. The oval holes allow the mounting plate to slide freely in both directions. Finally, the screws must be retightened.



Height adjustment with Series 200 mounting plates - Models B2RXE and B2PXE

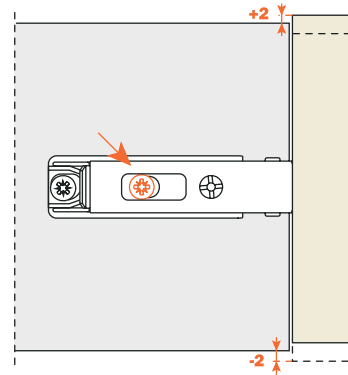
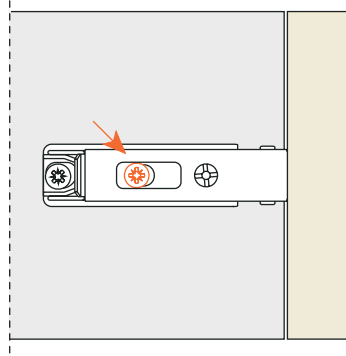
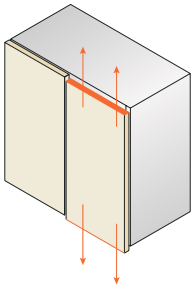
Height adjustment is made without loosening any screws. The door can be moved vertically by ± 2 mm simply by rotating the cam adjuster in this range of mounting plates.



Part 4

Height adjustment with Domi snap-on mounting plates - Models BAPXR and BARXR

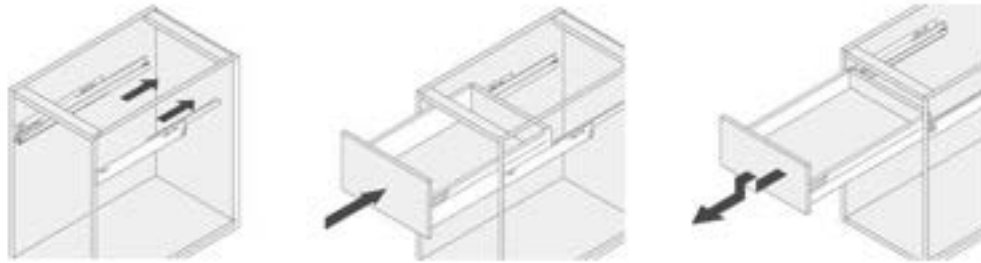
Height adjustment is made without loosening any screws. The door can be moved vertically by ± 2 mm simply by rotating the cam adjuster in this range of mounting plates.



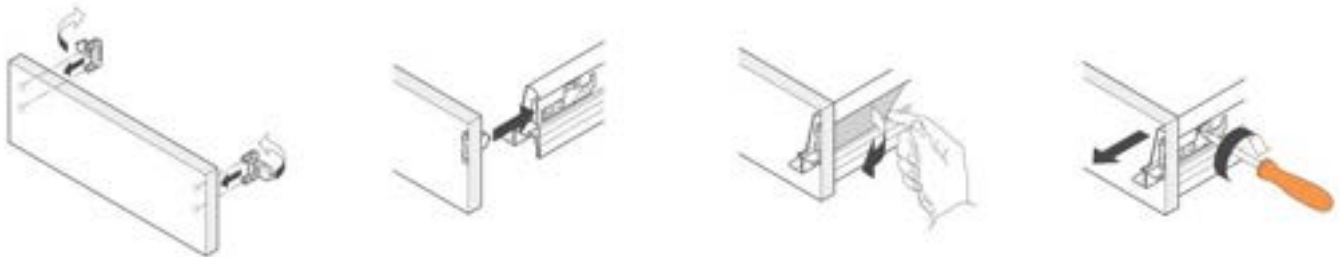
Drawer Assembly/Removal/Adjustments

Model: E-155

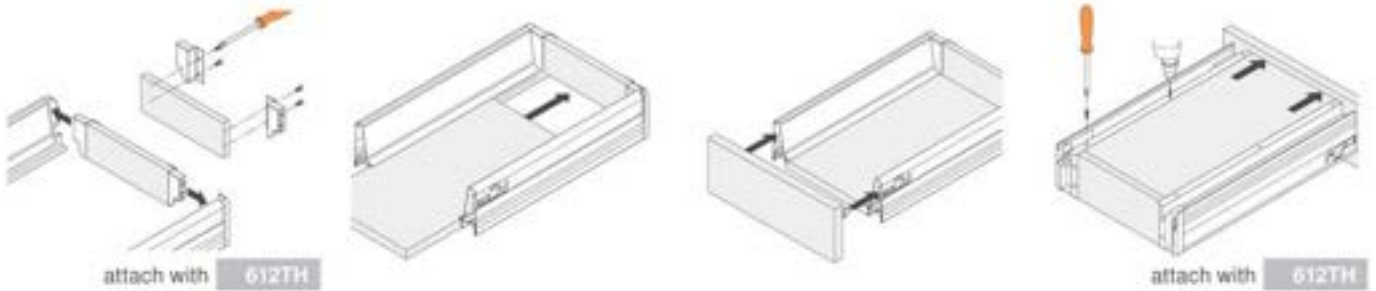
Drawer insertion and removal



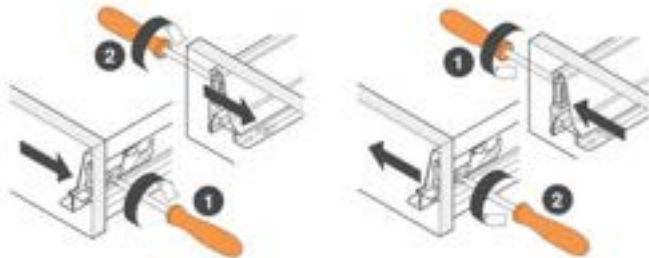
Drawer front attachment and removal



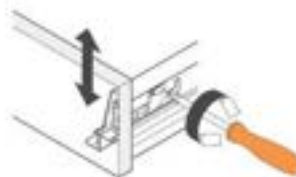
Drawer assembly



Side adjustment



Cam height adjustment

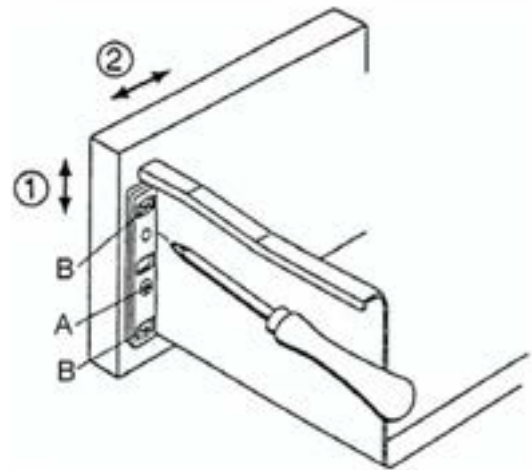


Drawer Adjustments

Model: E-155

Drawer Adjustment for Wrapping Drawer(s) on Autoclave Tower (B)

- 1 – Height adjustment: Loosen screws **B** slightly. Adjust screw **A** (adjustment +/- 2mm). Tighten screws **B**.
- 2 - Side adjustment: Loosen screws **B** slightly. Adjust front to required position (adjustment range +/- 1.5mm). Tighten screws **B**.



Surface Cleaning

Ortho-Sys. ECO-Sys, D-Series, & E-Series

Belmont Recommends:

- *Countertop Magic*® for Laminate and Solid Surface Work Surfaces
- *Stone Clean and Polish Magic*® for Cambria Quartz Work Surfaces
- *Cabinet and Wood Magic*® for Laminate and Melamine Surfaces
- *Stainless Steel Magic*® for Stainless Steel Surfaces

Products available at Lowes®, Home Depot®, or @ www.magicamerican.com

Laminate/Melamine Surfaces

Clean surfaces with a damp cloth or sponge with a mild soap.

Stains may be removed with most non-abrasive household cleaners such as Formula 409®, Fantastik®, Glass Plus®, or Windex with Ammonia D®.

For tough stains, use a paste of baking soda and water and apply with a soft bristled brush. Although baking soda is a low abrasive, excessive scrubbing or exerting too much force may damage the decorative surface.

Many commercially available products contain substances that may damage or discolor the decorative surface. **Do not** use abrasive cleaners such as toilet bowl cleaners, hydrogen peroxide, oven cleaners, drain cleaners, metal cleaners and polishes, chlorine bleach, coffee pot cleaners, hard water stain removers, fruit and berry juice, tub and tile cleaners, or equivalent.

LG HI-MACS® Solid Surface Tops

Clean surfaces with a damp cloth or sponge with a mild soap.

Stains can easily be removed using a domestic all-purpose cleaner or for tough stains use a bleaching agent (**do not leave in contact with the work surface for more than five minutes**) and rinse with clean water.

Avoid using cleaning agents that contain acids, such as methyl chloride or acetone. Should one of these products accidentally come into contact with the material, as a precautionary measure, rinse the surface with soapy water to prevent any discoloring taking place.

For additional care/maintenance, visit: www.lghausys.com

Cambria® Quartz Work Surfaces

Clean surfaces with a damp cloth or sponge with a mild soap.

Do not use abrasive, strong alkaline, acid, free radicals, or oxidized cleaners (whether high, neutral or low pH). **Do not** use products such as bleach, oven cleaners, Comet®, Soft Scrub®, SOS®, products with pumice, batteries, paint removers, furniture strippers, or tarnish/silver cleaners. **Do not** use abrasive or harsh scrub pads. **Do not** apply sealers, penetrants or topical treatments, as such products will wear off and cause the gloss to appear dull or inconsistent.

For additional care/maintenance, visit: www.cambriausa.com

Option: 92-810 Pneumatic Operated Push-Out Waste and Open/Close Storage Doors

Installation Instructions

WARNING, DO NOT ATTACH MAIN AIR UNTIL INSTRUCTED!!

1. Prior to installing cabinetry run (2) lines to the Red Light Unsterile Upper Storage. All other lines can be concealed under toe kick.
2. Main Control Assembly should be installed in the toe kick under last Base Cabinet next to the Autoclave Tower. Do not mount assembly as you may need to pull assembly out for troubleshooting.
3. Run lines as shown in attached diagrams. Be sure not to pinch any lines and leave enough slack in lines so Control Assembly can be slid out from under toe kick.
4. Open pneumatic controlled doors and tighten both valves on each end of cylinders. **Leave these doors open.**
5. Remove Waste Drawer and tighten up valve on end of cylinder. **Leave waste drawer uninstalled.**
6. Attach main air to inlet on Control Assembly. **Regulator #1 (Nearest Inlet) set @ 50-75psi and Air Regulator #2 set @ 15-45psi. Lowest settings on both Regulators preferred. See troubleshooting below for additional adjustment information.**
7. Start with waste drawer cylinder and loosen valve 1-Full Turn, activate green foot pedal, and cylinder should push-out. If not, loosen ½ turns until cylinder pushes out. Re-install waste drawer and activate green foot pedal. The desired push-out speed should be enough to push drawer, but yet slow down before the drawer reaches full extension. Loosen the valve to increase push-out speed or tighten to slow down.
8. On the Blue Tower, Loosen the valves on each end of the cylinder ½ turn. **Caution!** Door may attempt to shut when air pressure fills the cylinder. Activate the blue foot pedal and door should open, push foot pedal again and door should close. One end of cylinder controls opening and the other end controls closing, so adjust the appropriate end to slow down or speed up opening and closing. Desired speed varies, but usually closing of the doors is slow in attempt to shut the door quietly.
9. On the Red Upper Storage, Loosen the valves on each end of the cylinder ½ turn. **Caution!** Doors may attempt to shut when air pressure fills the cylinder. Activate the red foot pedal and doors should open, push foot pedal again and doors should close. One end of cylinders controls opening and the other end controls closing, so adjust the appropriate end to slow down or speed up opening and closing and synchronize doors to open and close together. Desired speed varies, but usually closing of the doors is slow in attempt to shut the door quietly.

Pneumatic System

Model: E-155 Addendum A

Troubleshooting:

- **Air leaking at foot pedal(s):**
 1. Disconnect main air from inlet,
 2. Reverse lines at pedal(s),
 3. Reconnect main air and test.

- **Pedal not activating cylinder(s)/or inconsistent operation:**
 1. Review diagrams and check appropriate connections,
 2. Check for pinched line(s),
 3. Be sure valves are adjusted properly on cylinder(s),
 4. Distance from pedal to assembly is too far: Increase pressure at Regulator #1 (Nearest air inlet) on Main Assembly, Do not exceed 75 lbs.,
 5. Adjust Regulator #2 on Main Assembly, Do not exceed 45 lbs.

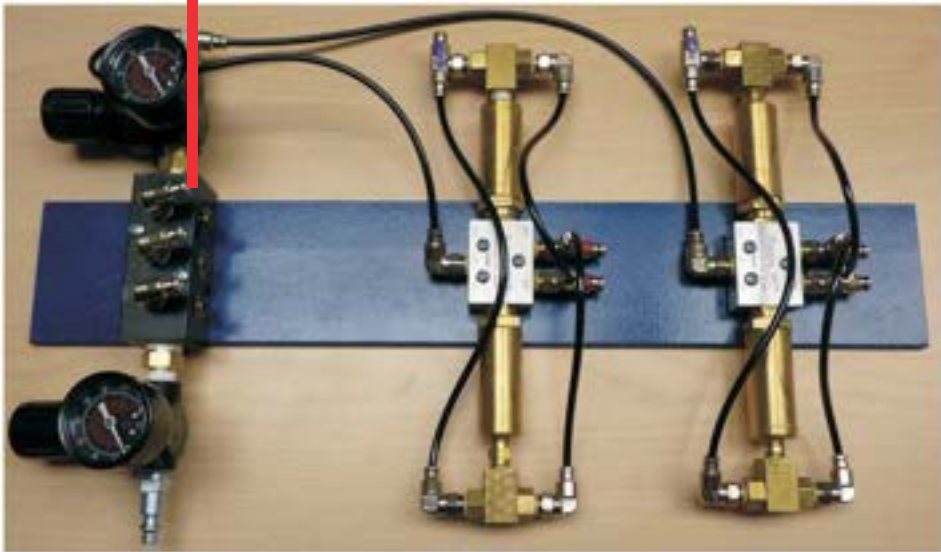
Waste Push-Out Drawer Line Connections



Waste Air Cylinder



Green Foot Pedal

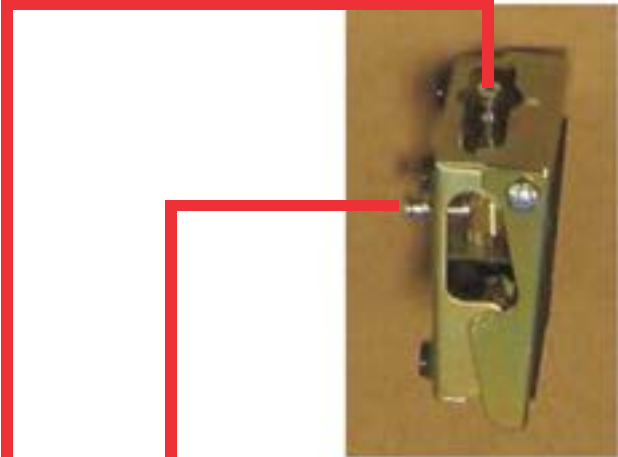


Regulator #2
Set @ 15-45psi

Regulator #1
Set @ 50-75psi

Control Assembly

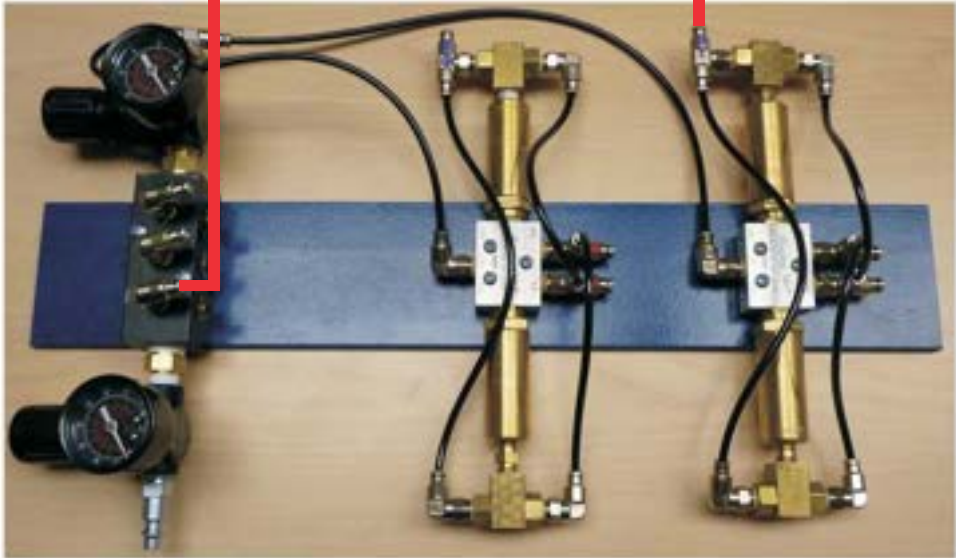
Part 1: Blue Light - Clean Storage Line Connections



Blue Foot Pedal

*Regulator #2
Set @ 15-45psi*

*Regulator #1
Set @ 50-75psi*



Control Assembly

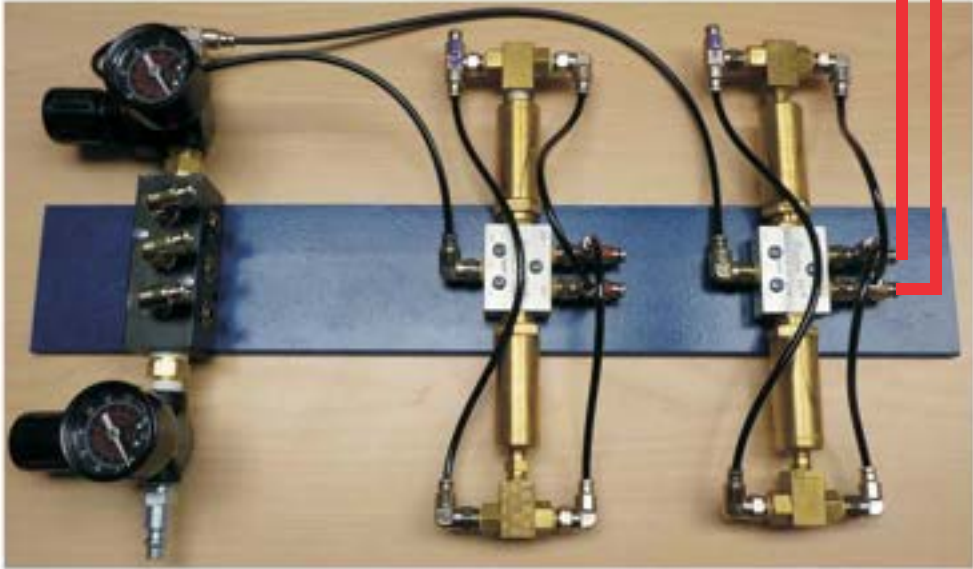
Part 2: Blue Light - Clean Storage Line Connections



Blue Light Cabinet Air Cylinder

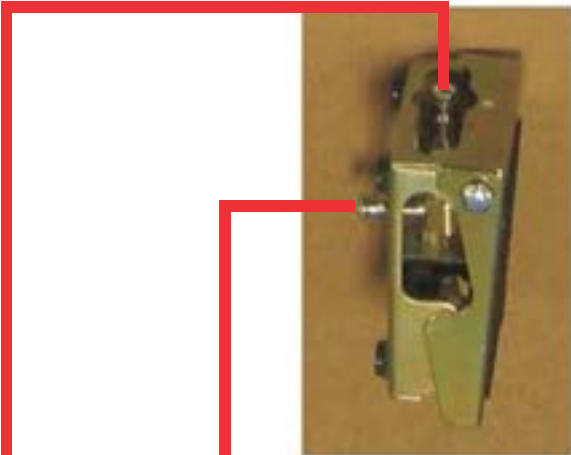
*Regulator #2
Set @ 15-45psi*

*Regulator #1
Set @ 50-75psi*

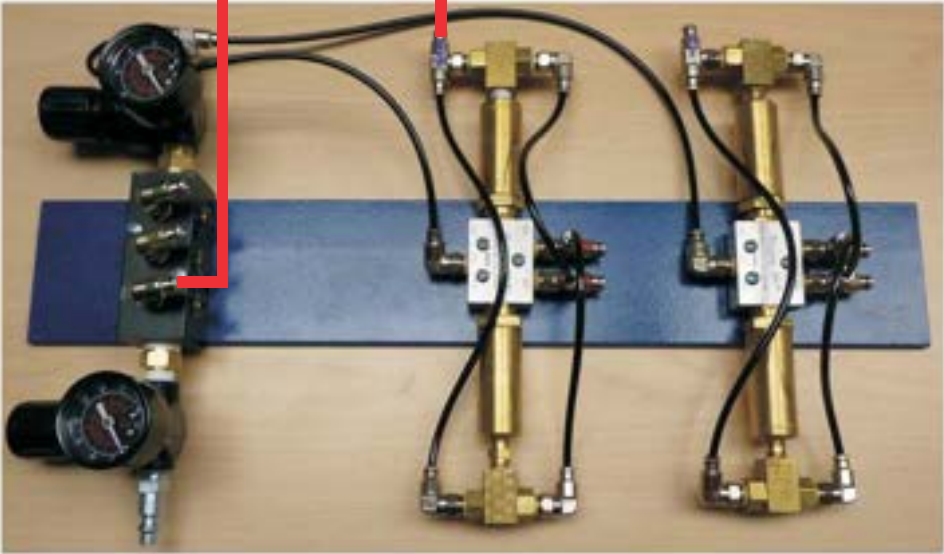


Control Assembly

Part 1: Red Light - Unsterile Storage Line Connections



Red Foot Pedal

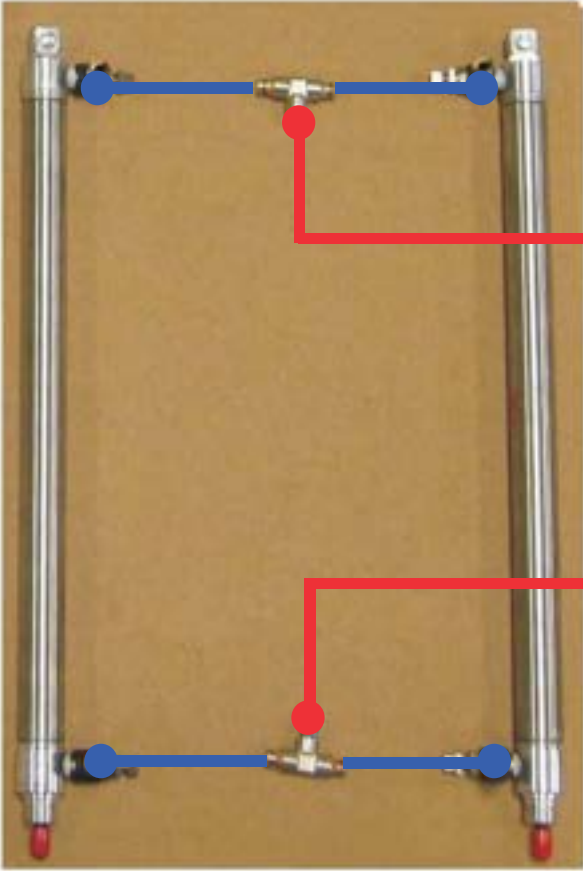


Regulator #2
Set @ 15-45psi

Regulator #1
Set @ 50-75psi

Control Assembly

Part 2: Red Light - Unsterile Storage Line Connections

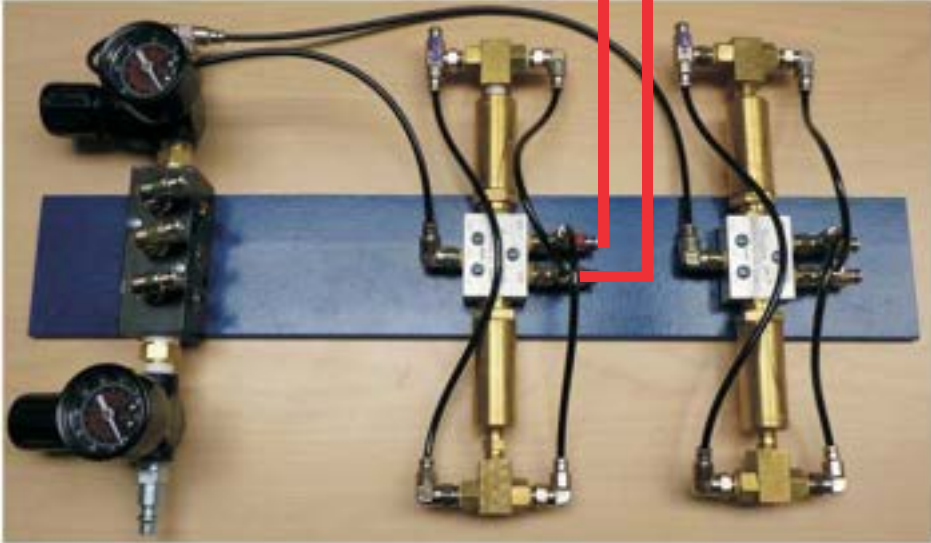


Note: Blue lines shown should be kept to minimum and equal in length between Cylinders.

Red Light Cabinet Air Cylinders

*Regulator #2
Set @ 15-45psi*

*Regulator #1
Set @ 50-75psi*



Control Assembly

LED Lighting

Model: E-155 Addendum B

LED Lighting

Optional LED Task/Cabinet Light Wiring Installation:

Before hanging each upper cabinet, route wires up through the pilot holes in the Top and Bottom of the Upper Cabinet(s).

Layout the Transformer(s) on the Top of the Upper Cabinets so no more than (4) LED lights can be plugged into the transformer.

Plug in each LED Light into any open port on the Transformer. **NO MORE THAN (4) LED LIGHTS CAN BE POWERED OFF EACH TRANSFORMER.** Plug-in Jumpers supplied with the Transformer in the remaining open ports (see Figure Below).

Mount the Transformer using supplied fasteners.

Plug the transformer into a Wall Outlet wired to a Switch.

Use wire ties to manage cables after installation is tested.

