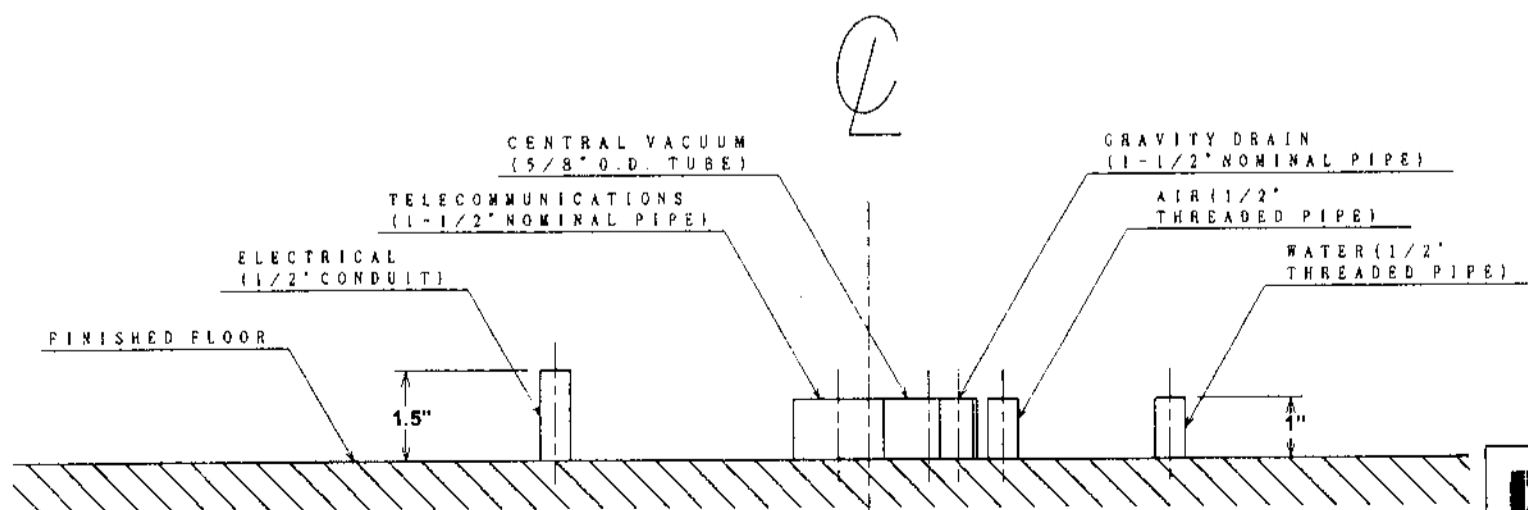
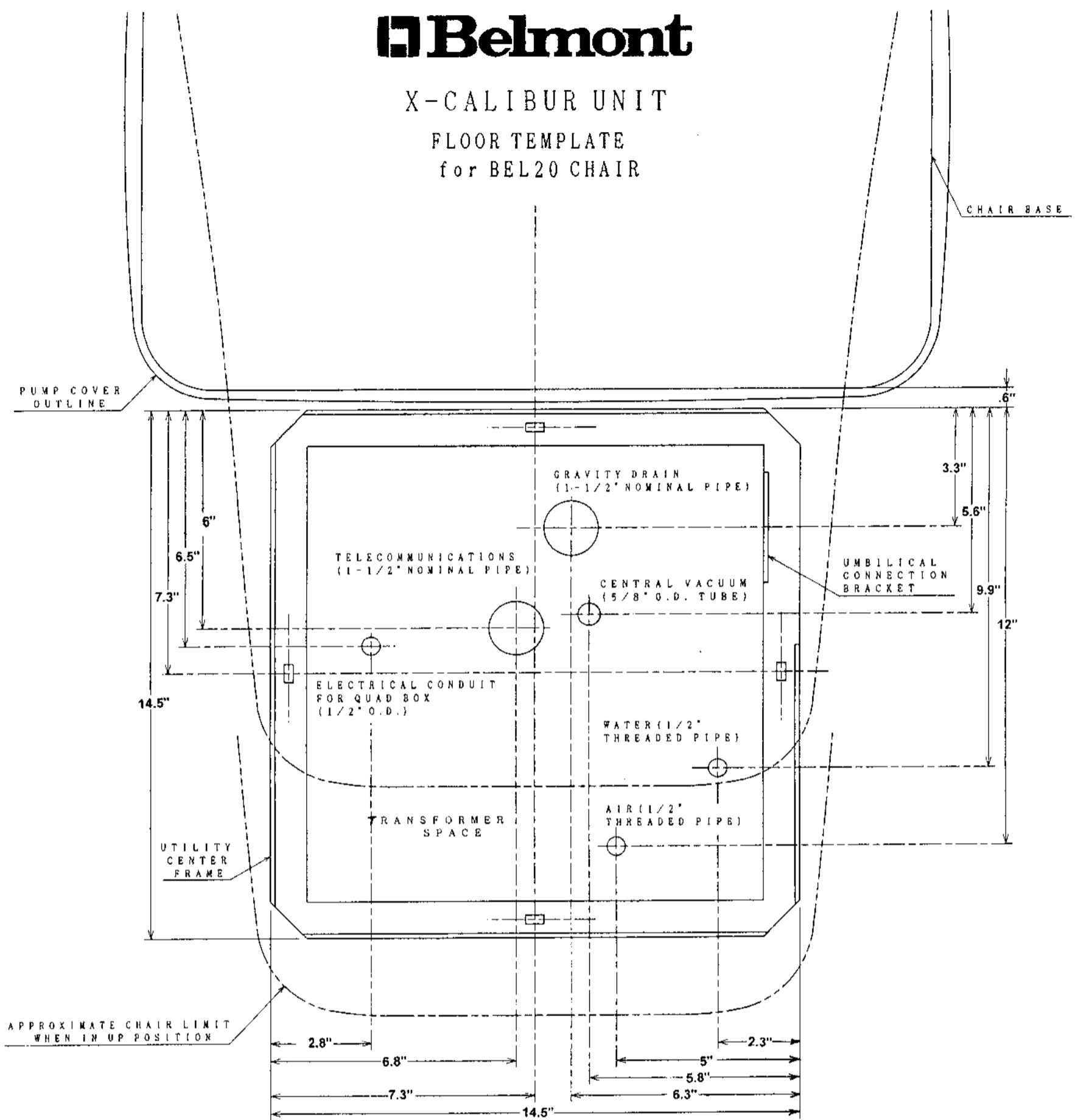




X-CALIBUR UNIT
FLOOR TEMPLATE
 for BEL20 CHAIR



- NOTES:**
- ① LOCAL REGULATIONS PROVIDE THAT LICENSED PLUMBERS/ELECTRICIANS SHALL INSTALL UTILITIES
 - ② MAKE SURE ALL PLUMBING CONFORMS TO PREVAILING LOCAL CODES.
 - ③ PLUMBING CENTRAL VACUUM TO THE UTILITY CENTER SHOULD BE SPECIFIED BY THE CENTRAL VACUUM SUPPLIER AND TERMINATED IN UTILITY CENTER WITH 5/8" O.D. TUBE PERPENDICULAR TO THE FLOOR, SIMILAR TO THE DRAIN CONNECTION.
 - ④ GRAVITY DRAIN HAS 1-1/2" NOMINAL PIPE PROTRUDING 1" FROM FINISHED FLOOR.
 - NOTE: CONTRACTOR TO SUPPLY AND PLACE TRAP IN LINE TO CONFORM WITH LOCAL CODES.
 - ⑤ ELECTRICAL CONTRACTOR TO SUPPLY QUAD ELECTRICAL OUTLET BOX.

X-CALIBUR UNIT

FLOOR TEMPLATE
for BEL20 CHAIR